

Eletroglottography Manual

By Yuan Chai

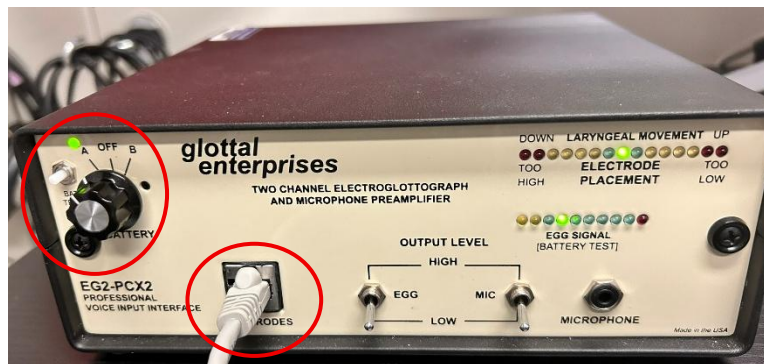
06/17/2025



EGG is frequently used to indirectly represent the degree of contact of vocal folds.

1. EGG and audio interface setup

On EGG, on the front side, the electrodes should be plugged in. The battery light should be green. If it is red, it means the device is of low battery.



On the back side of the EGG, the 3.5mm TRS cable should be plugged into “EGG (Mono)” port.



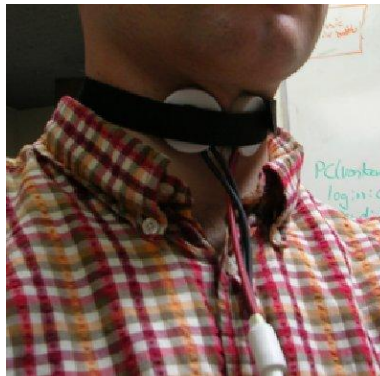
On the audio interface, the 6.35 mm TRS cable should be plugged into Channel 4. Headset mic 1 should be plugged into Channel 1. The volume control knobs for Channel 1 and 4 should be turned clockwise to increase the volume. The Channel 1 & 2 48v phantom power should be

turned on (pressed down); the Channel 3 & 4 48v phantom power should be turn off (not pressed down).



2. Recording

The electrodes need to be placed at the left and right side of the speaker's **thyroid notch**. The thyroid notch can be located by using finger to trace the midline of the neck starting from the chin. The first prominent notch the finger touches is the thyroid notch (Adam's apple for males). The second prominent notch the finger reaches is the cricoid cartilage.

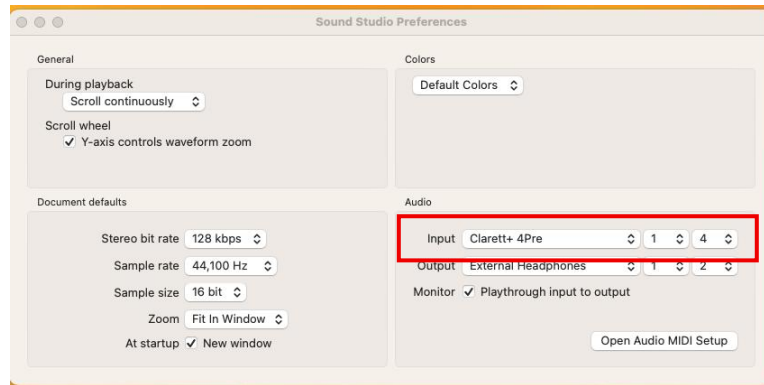


Source: <https://phon.wordpress.ncsu.edu/lab-manual/electroglottograph/>

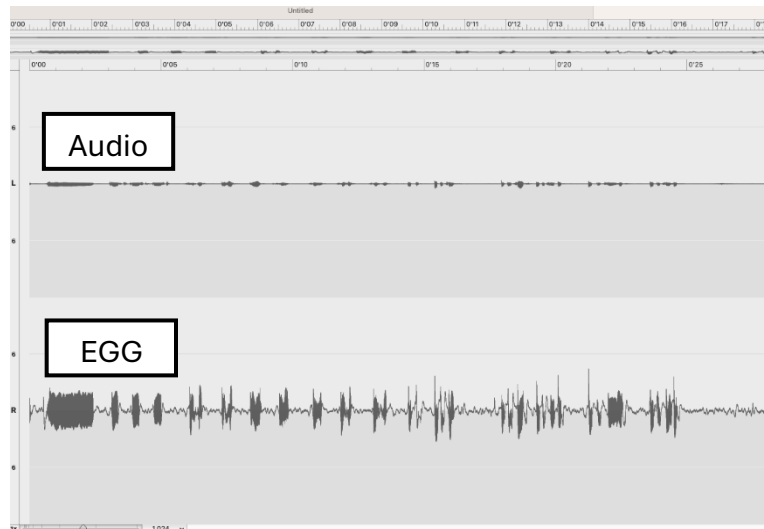
After place the electrodes on the participant's neck, monitor the light on the "LARYNGEAL MOVEMENT" light panel. When the participant is speaking, the light should stay green (the middle three lights). If it is not green, it means the electrodes are not placed correctly.



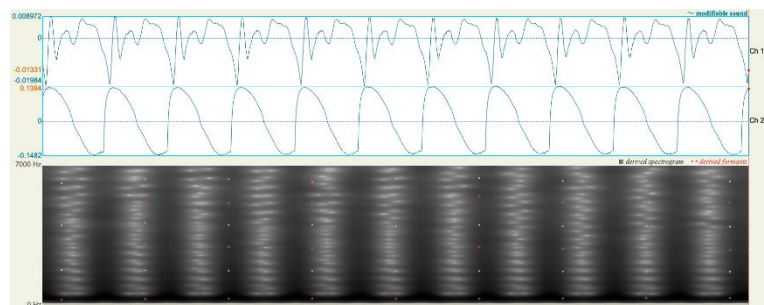
On sound studio, open the setting, and select Channel 1 and 4 as the input.



This is what the recording interface should look like. The left channel is audio recording; the right channel is EGG recording.



This is what the EGG recording looks like:



3. Save the recording

Save the recording to your designated folder on the computer. Save it as WAVE format.

4. Troubleshooting

- The EGG accessories for the booth EGG is in Drawer 4 labeled as “EGG accessory.” The field EGG and its accessories are in the back cabinet.
- If the recording is very noisy even though the laryngeal movement has a green light. It is likely that the battery is deteriorating. Try changing the battery. The instructions for changing the battery are in the following pages. The link for the batteries are here: <https://a.co/d/5i5yvXI>. Buy two sets of them.
- If the battery is not charged, it is possible that the charger is broken. There are two additional chargers in the back cabinet.

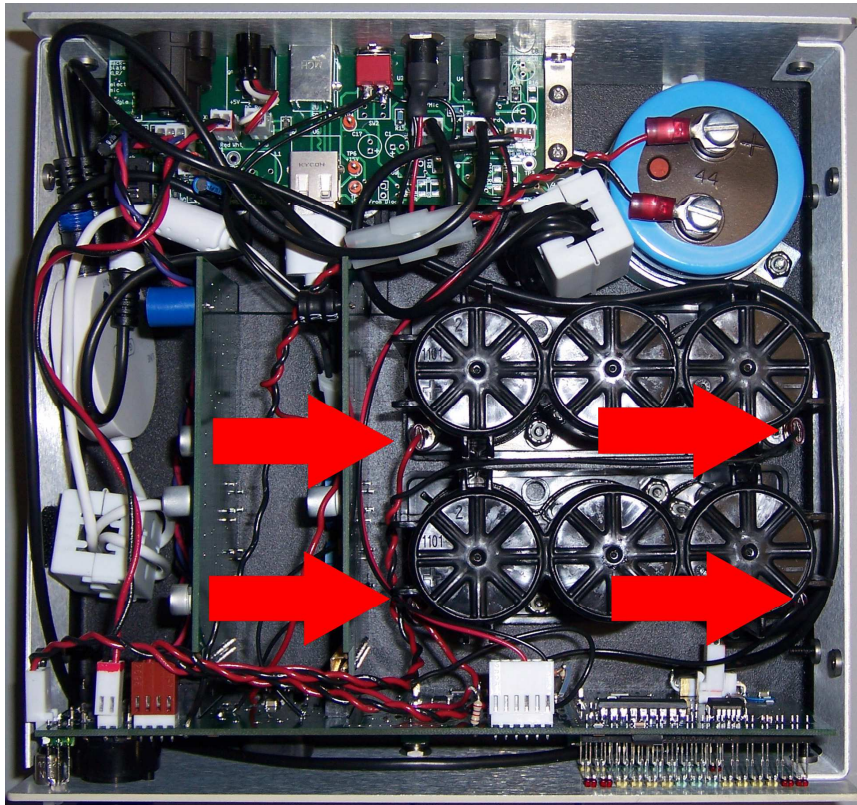
REPLACING THE BATTERIES ON A GLOTTAL ENTERPRISES EG2-PCX2 ELECTROGLOTTOGRAPH

*****This procedure is carried out at your own risk and will void the warranty on your EG2-PCX2.*****

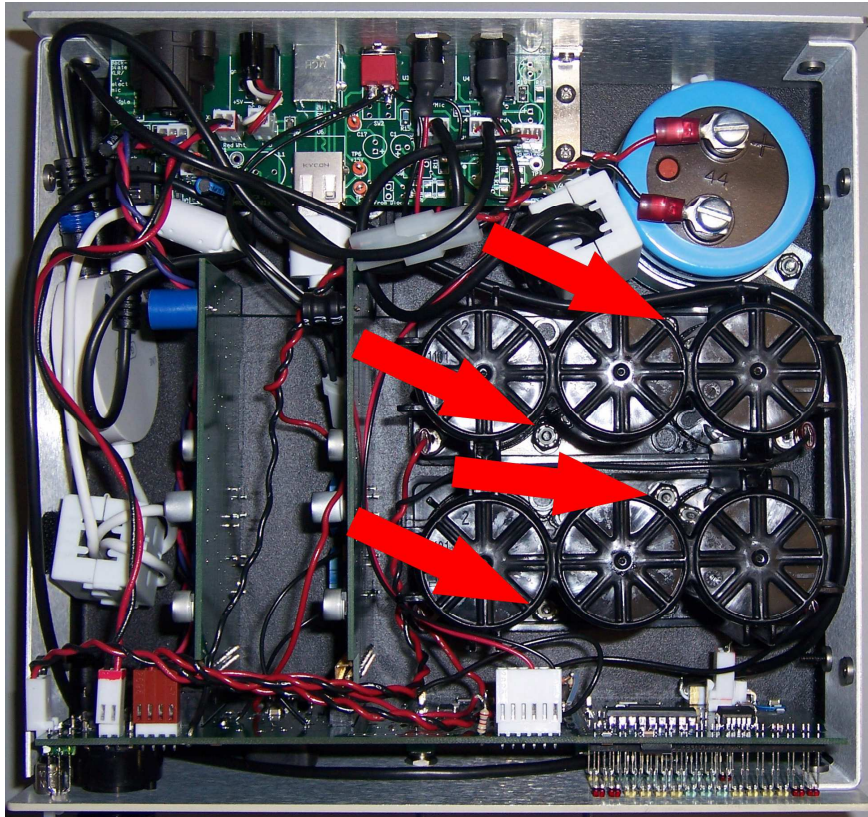
1. Start by removing the top cover. There are 4 screws holding it on, use a Phillips-head screwdriver.



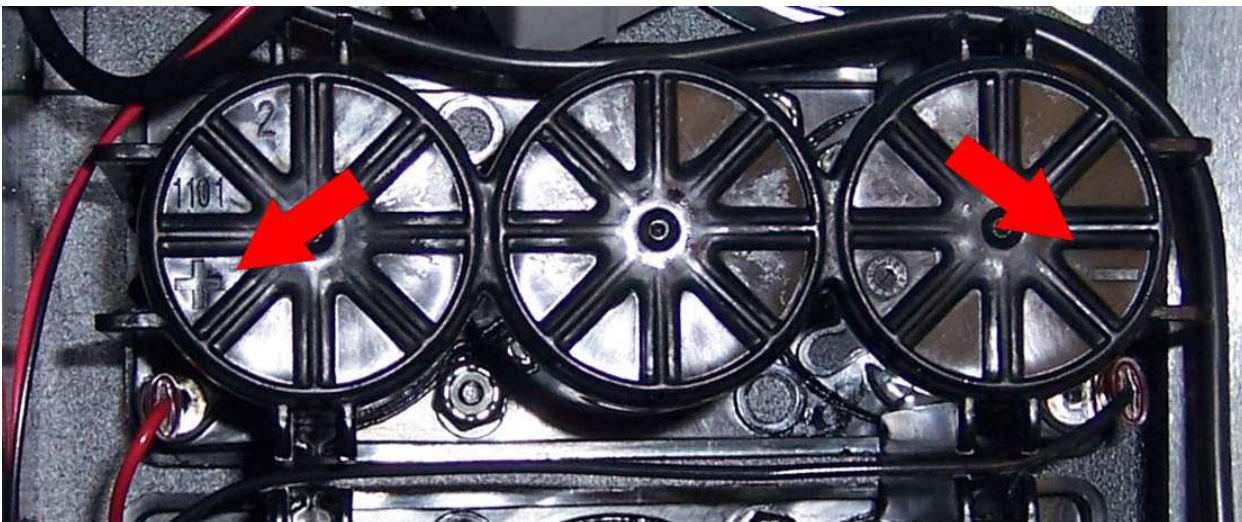
2. Now remove the positive and negative leads to the batteries. Needle-nose pliers are preferable to use. DO NOT PULL DIRECTLY ON THE WIRES, grip the end of the lead.



3. Remove the 4 hex nuts holding in the batteries. The hex nuts have nylon inserts, so it will be necessary to hold the screw from the bottom using a Phillips-head screwdriver.



4. The batteries are now loose. Dispose of them as directed. Carefully install new batteries by following these steps in reverse. Be sure to note the positive and negative terminals on the batteries, the labels are molded into the plastic. The RED wire connects to POSITIVE (+) and the BLACK wire connects to NEGATIVE (-).



Once you have replaced the batteries, be sure to remember to never leave the EG2 on the charger longer than overnight. That will ensure a nice, long life for the new batteries.