



**Northwest Research Center for  
Particulate Air Pollution and Health  
University of Washington**

**PI: Jane Q. Koenig**

**Deputy PI: Dave Kalman**

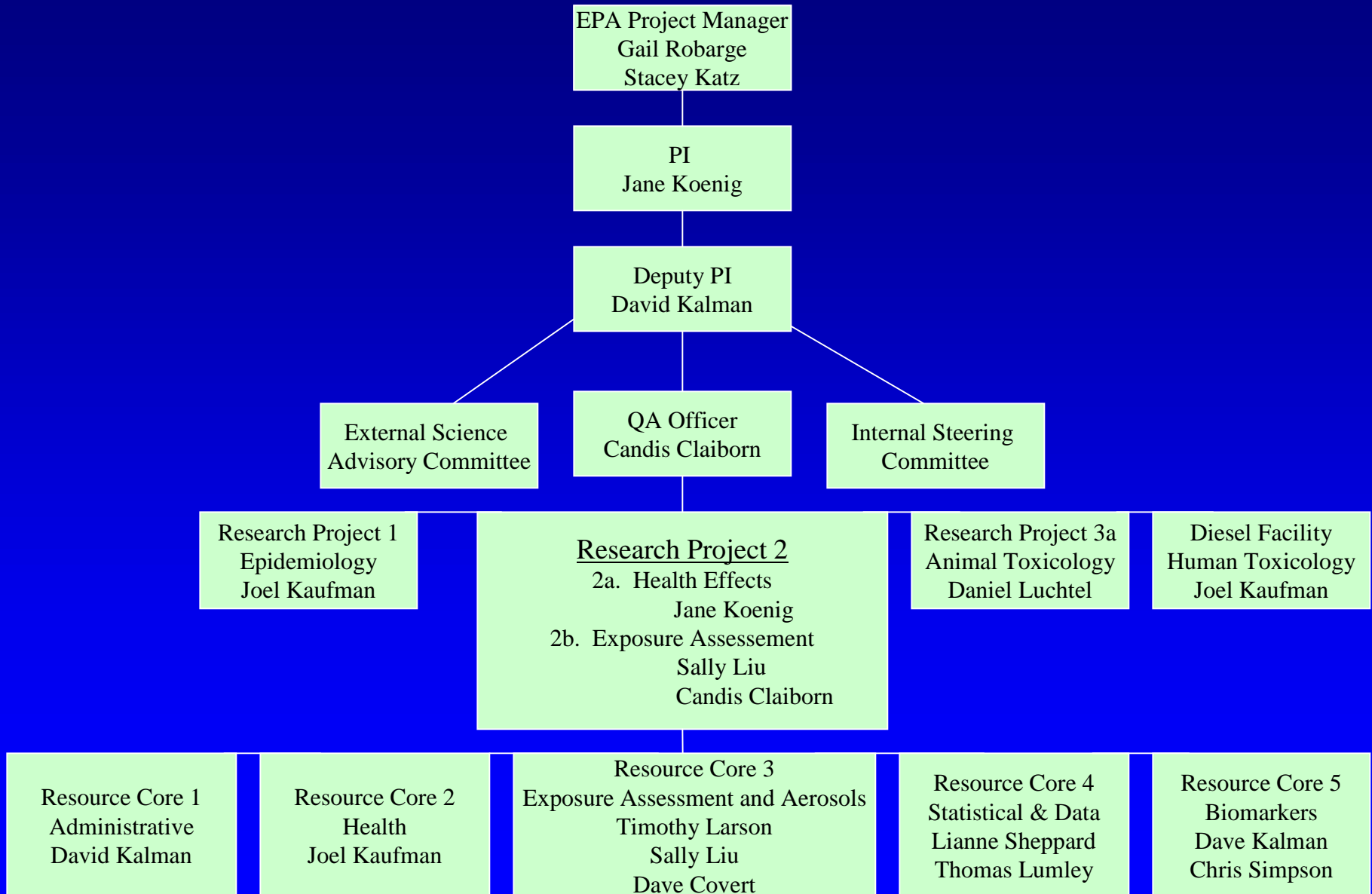


# Welcome!!

- Thank you for your interest in our research
  - WSU
  - Lawrence Berkeley Lab
  - PSCAA
  - WA Dept of Ecology
  - WA Dept of Health
  - Region 10 EPA
  - BAQS
  - Others!

# EPA NW Research Center for Particulate Air Pollution

## Figure 1. Project Organization Chart



# External Science Advisory Committee

- Ralph Delfino, MD, MPH, Chair, UC Irvine,
- David V Bates, MD Emeritus Chair, UBC
  - Joe Mauderly, DVM, Lovelace;
  - David Warheit, PhD, DuPont;
  - Jim Zidek, PhD, UBC
  - Michael Brauer, ScD, UBC
  - Phil Hopke, PhD, Clarkson
  - Rick Burnett, PhD, Health Canada;
  - Marina Cofer-Wildsmith, ALA; Robin Evans-Agnew,  
ALA

# External Science Advisory Committee: not attending

- Not attending
  - Peter Guttorp; PhD, UW;
  - Petros Koutrakis, PhD, Harvard;
  - Jonathan M Samet, MD, MPH, Johns Hopkins;
  - Stephen Schwartz, PhD, Brookhaven;
- Retired
  - Naydene Maykut. PSCAA;
  - Astrid Berg, ALA

# Status of NW Center Responsive to NRC Priorities

- Each of our projects reflects multiple priorities
- Primary emphases and NRC priorities
  - Outdoor v Actual exposures
  - Susceptible populations
  - Characterization of emission sources
  - Mechanisms of injury
  - Analysis and measurement

# Status of NW Center

## Primary Highlights- 1

- Relationships among indoor, outdoor, personal and central site PM concentrations:
- Health effects of outdoor- versus indoor-generated PM
- Lag structure of respiratory effects
- Lack of cardiovascular effects for sudden cardiac death or MI
- Preliminary results of chronic PM exposure and cardiac effects

# Primary Highlights-2

- New models for source apportionment of PM
- Statistical methods for air pollution health research
- New models for exposure estimation
- Construction of a diesel exposure facility

# Status of NW Center

## Interactions with other PM Centers

- Participation in the Centers-wide source apportionment workshop
- Collaboration on source apportionment with Phil Hopke and Eugene Kim
- Collaboration on urinary biomarkers with Henry Gong (CA center) and CDC
- Collaboration with Mitch Cohen at NYU through the sharing of PM<sub>2.5</sub> filter samples
- Toxicology Round Robin using same PM samples