



# Great Northern

## LANDSCAPE CONSERVATION COOPERATIVE

### **GNLCC Goal:**

Coordinate, facilitate, promote and add value to large landscape conservation to build resource resilience in the face of climate change and other landscape-level stressors through:

- Support Science Development
- Effect Coordination
- Inform Conservation Action
- Monitor and Evaluate
- Communicate and Educate



*|Shaping the Future of the West*

### **Great Northern Landscape Conservation Cooperative** Strategic Conservation Framework

A proposal to the Steering Committee from the Sonoran Institute  
DRAFT FOR DISCUSSION 2/28/2011

The Great Northern Landscape Conservation Cooperative (GNLCC) is an enterprise of the Department of Interior co-led by the U.S. Fish and Wildlife Service and National Park Service, and engaging other federal and state agencies, tribal nations, and nongovernmental partners. Landscape conservation cooperatives (LCCs) are applied conservation science partnerships that provide scientific and technical support for conservation at landscape scales. Landscape conservation cooperatives are intended to inform management of land, water, fish, wildlife, and cultural heritage resources in response to climate change and other landscape-level challenges.

The GNLCC encompasses mountain and transitional habitats in regions of Wyoming, Montana, Idaho, and the upper Green River basin in southern Wyoming, and small parts of Colorado and Utah, and portions of the Interior Columbia Plateau reaching into Oregon and Washington westward to the Cascade Mountains. It includes the international landscapes of interior British Columbia and Alberta, Canada, to cover the entirety of the northern Rocky Mountains and mid-continent lowlands of the interior Northwest. Throughout this large geography, the GNLCC is a kind of network for the many efforts occurring in this region through the partnership community.

# GNLCC Leadership

## Steering Committee Participation

Bureau of Land Management  
Bureau of Reclamation Pacific NW Region

Columbia Basin Federal Caucus  
Confederated Tribes of the Umatilla Indian  
Reservation  
National Park Service  
NOAA Research  
Natural Resource Conservation Service  
Oregon Department of Fish and Wildlife  
Fish and Wildlife Service, Pacific Regional  
US Forest Service Northern Region  
US Geological Survey  
Washington Department of Fish and  
Wildlife  
Western Association of Fish and Wildlife  
Agencies  
Wildlife Conservation Society  
Yakama Indian Nation

Alberta Sustainable Resource Development  
Alberta Parks Divison  
B.C. Ministry of Forest, Lands, and Natural  
Resource Operations

Bureau of Indian Affairs, Rocky Mountain Region  
Canadian Wildlife Service, Environment Canada  
Confederated Salish---Kootenai Tribes  
Heart of the Rockies Initiative  
Idaho Fish and Game  
B.C. Ministry of Environment  
Montana Fish Wildlife and Parks  
Nez Perce Tribe

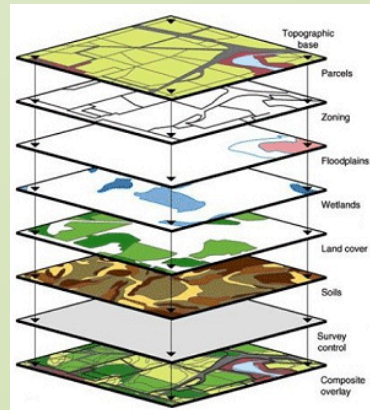
Fish and Wildlife Service, Mountain-Prairie Region

US Forest Service Intermountain Region  
Waterton Lakes NP, Parks Canada  
Wyoming Game and Fish

# GNLCC Science Priorities

## 2010 – 2011

- Habitat Connectivity
- Aquatic Integrity
- Climate Change
- Data Integration
- Partnership Development
- Outreach



# GNLCC Projects through CESU

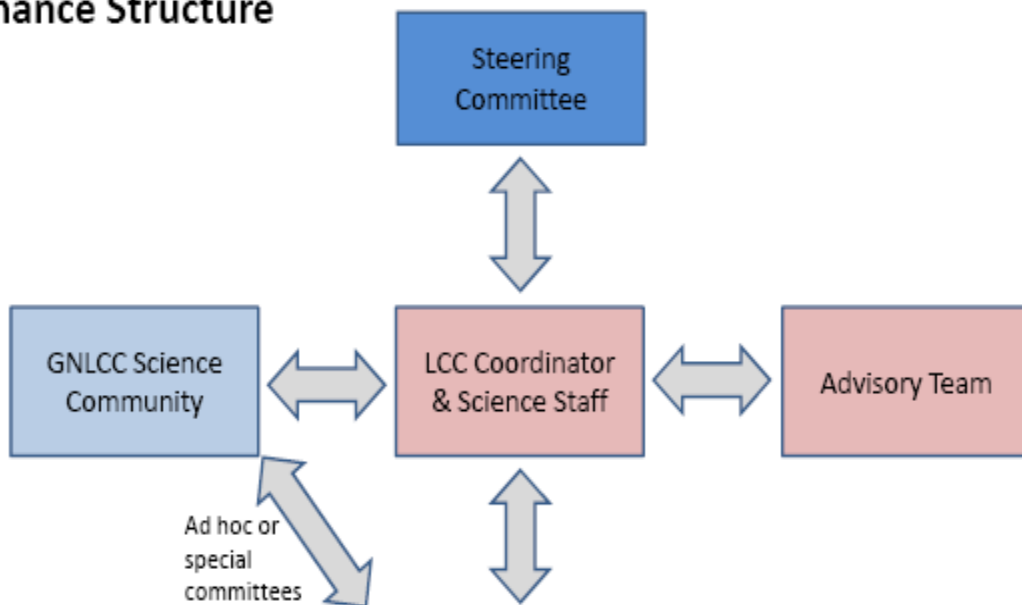
2010-2011, GNLCC funded 4 science projects through the Pacific Northwest and Rocky Mountain CESUs totaling **\$497,000**

Title	Institution	Funding	Geography
Applying Vulnerability Assessment Tools to Plan for Climate Adaptation: Case Studies in the Great Northern LCC	UW	\$ 95k	PNW CESU
SageSTEP Long-term Ecological Monitoring Network	OSU	\$ 75k	PNW CESU
Document Fine Scale Linkage Areas and Conservation Delivery in the Northern Rockies of US and Canada	UM	\$272k	RM CESU
GNLCC Multi-dimensional Synthesis	MSU	\$ 55k	RM CESU



# Great Northern Landscape Conservation Cooperative

## Governance Structure



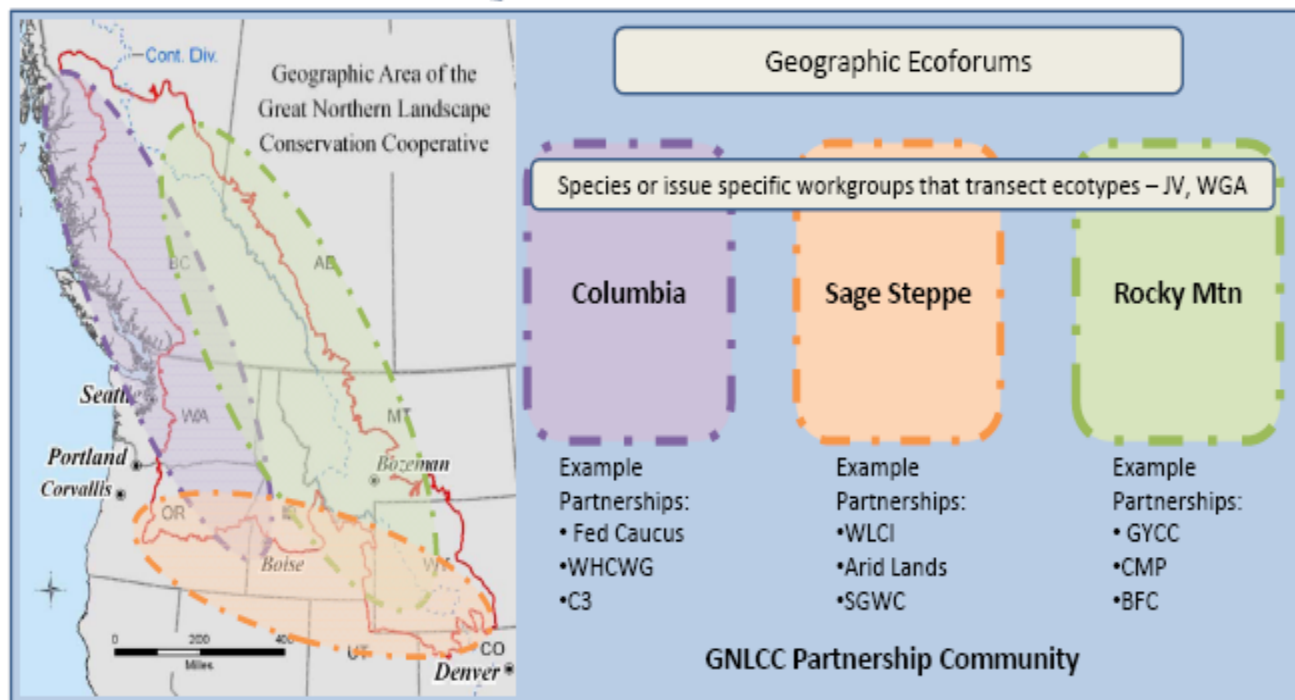
### FUNCTIONS

#### *Steering Committee or Executive Council*

1. Set vision, Goals and Priorities for GNLCC
2. Provide direction to the GNLCC Coordinator and Staff
3. Approve Long-term Strategy and Operations
4. Approve GNLCC capacity needs
5. Approve funding for annual workplan including priority setting process

#### *GNLCC Coordinator and Staff/ Advisory Team*

1. Promote and communicate long-term vision
2. Develop and write long-term strategy and annual workplans
3. Coordinate science and information needs
4. Develop and implement process for operations
5. Develop annual workplan recommendations
6. Develop and revise Long-term Strategy
7. Coordinate, communicate and provide outreach to Science and Partnership Communities



## **GNLCC Vision:**

The Great Northern Landscape Conservation Cooperative is committed to land, water, and wildlife conservation across the landscape through inter-organizational, collaborative science and management.

### **GNLCC Goal:**

Build resource resilience and inform sustainable resource management in the face of landscape stressors

**Climate Change**

**Energy Development**

**Invasive Species**

**Columbia Basin**

**Upper Columbia River, tributaries and river valley ecology**

**Rocky Mountain**

**Mountain forests, alpine and high relief ecotypes**

**Sage Steppe**

**Arid lands, high-elevation prairies and deserts**



**Climate Change**

**Energy  
Development**

**Invasive  
Species**

**Columbia Basin Forum**

- 1. Identify Leadership and Membership**
- 2. Identify and Prioritize key Conservation Targets**
- 3. Prioritize Landscape Stressors**
- 4. Determine existing science, resources and tools**
- 5. Determine the gaps & outstanding science needs**

**Climate Change**

**Energy  
Development**

**Invasive  
Species**

**Columbia Basin Forum**

- 1. Identify Leadership and Membership**
- 2. Identify and Prioritize key Conservation Targets**
- 3. Prioritize Landscape Stressors**
- 4. Determine existing science, resources and tools**
- 5. Determine the gaps & outstanding science needs**

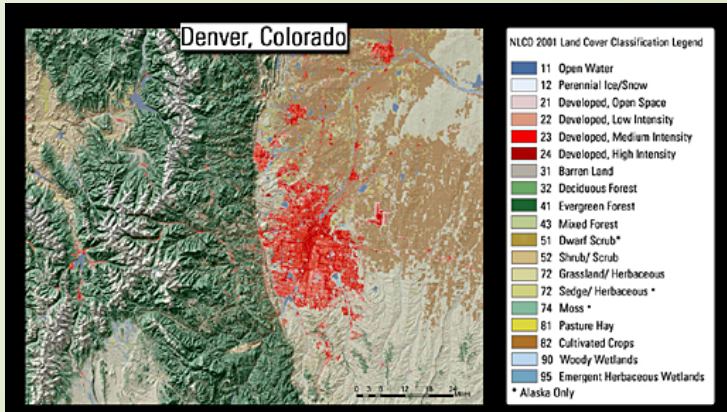
**Highly Specific  
Science Needs**

**?**

**Info Gaps**



# Managers of the Forum

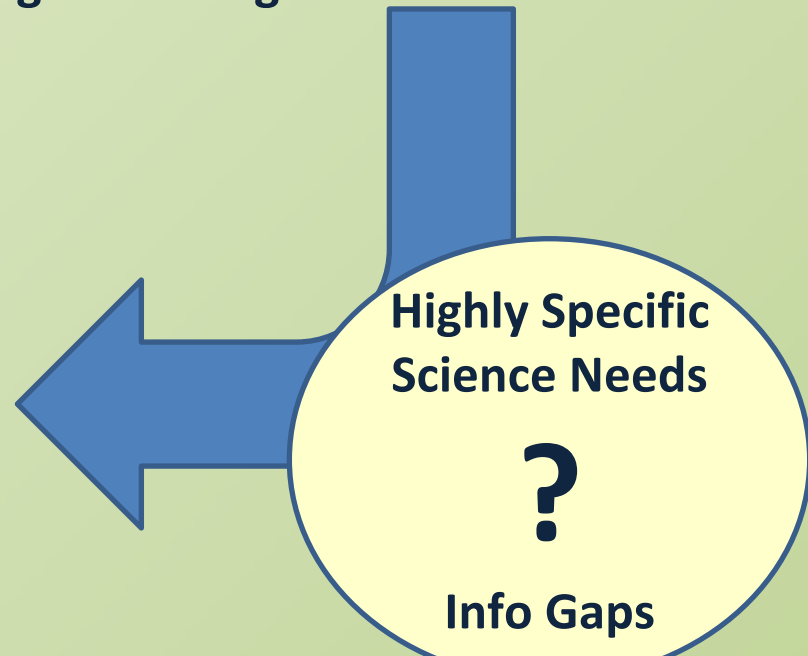


## GNLCC Steering Committee

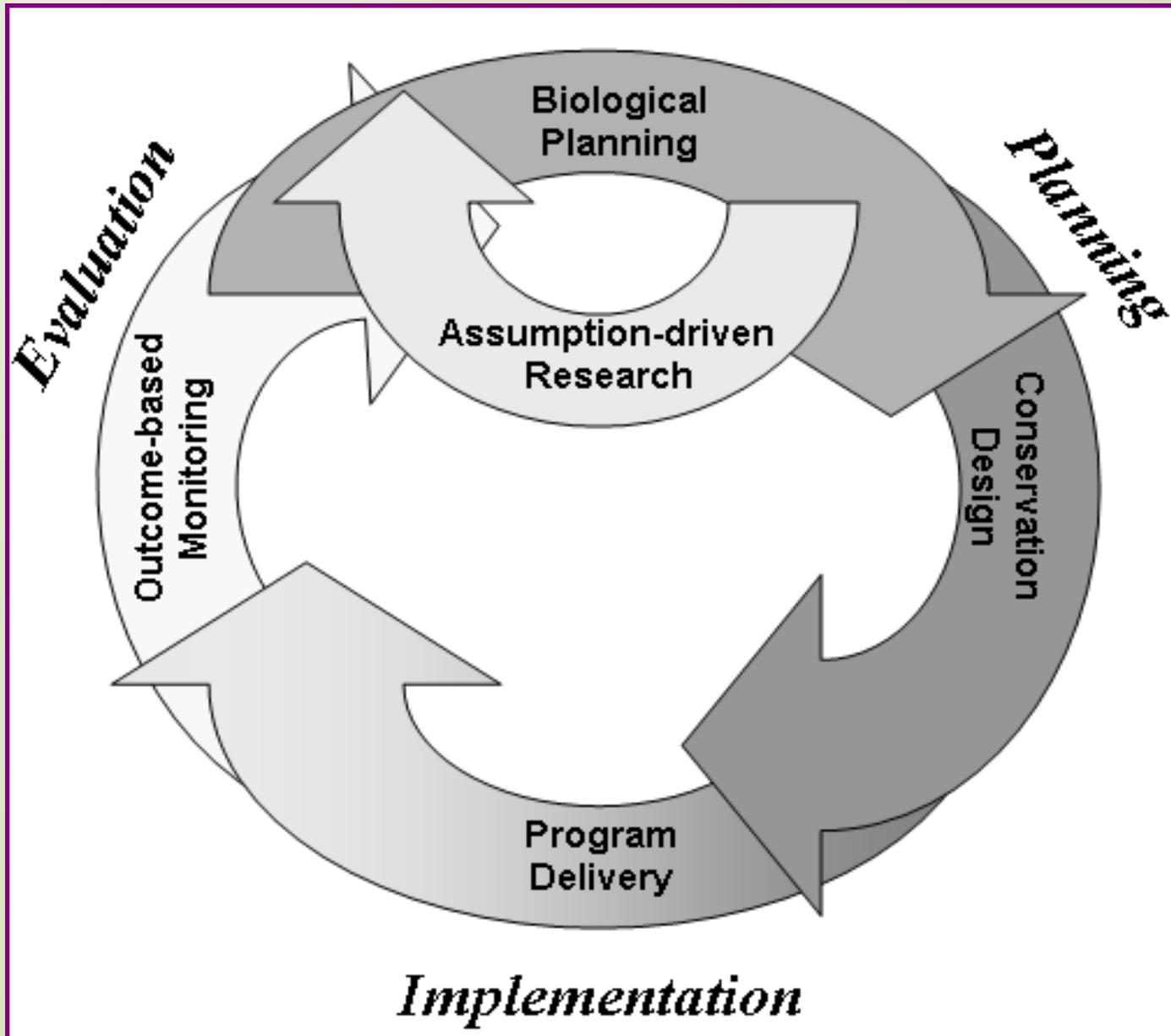
Supported by high-level coordination and leveraged funding streams

## Science Community

University, Federal, State, NGO  
Multidisciplinary & Coordinated

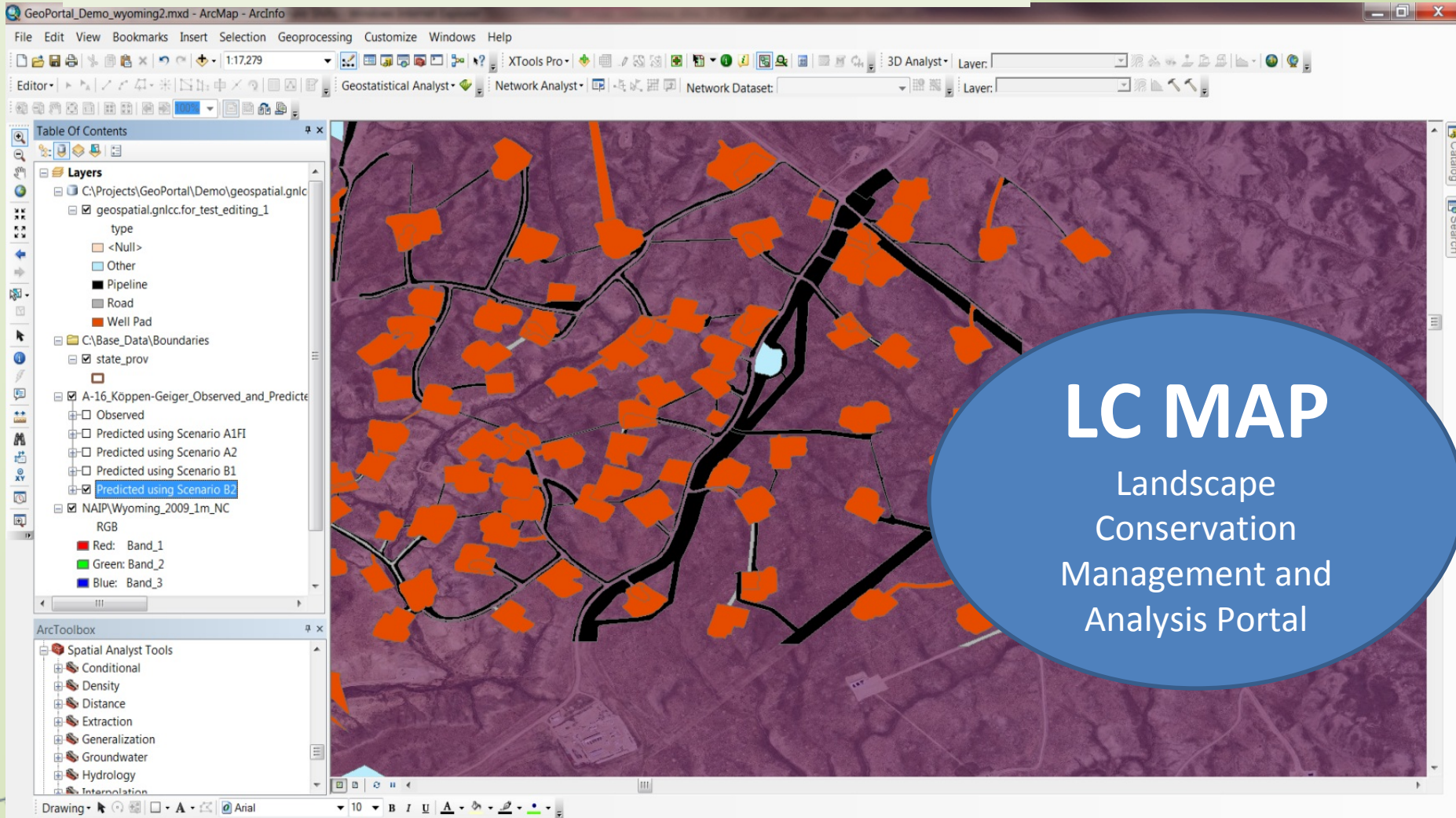


# Adaptive Management



# Integration

## Analysis and Interoperability



**LC MAP**

Landscape  
Conservation  
Management and  
Analysis Portal



# How to get Involved

[www.nrmssc.usgs.gov/gnlcc](http://www.nrmssc.usgs.gov/gnlcc)

## Partner Forums:

Columbia Basin Shrub Steppe, Rocky Mountain

## Science Community

Webinars: live (once a month), streamed, or schedule to present

LC MAP: data discovery, storage, documentation, and analysis tools in an integrated environment

### LC MAP

The Landscape Conservation Management System (LCMS) is a web-based workspace allowing multiple partners to securely share and access common datasets and information to further coordinated research, management, and resource conservation. Read more...

### Updates

- Climate Funding Opportunities
- GNLCC Funded Science: Researchers Develop New Fish Population Modeling Tool
- An Analysis of Meta-Information for Landscape Conservation in the Great Northern Area, Quarterly Progress Report - July 11, 2011
- FY 2011 Funded Projects
- GNLCC Process Diagram: Online information for landowners, institutions, & organizations

### The Newsletter

To receive news and announcements about landscape conservation management, and events within the Great Northern area, join our mailing list.

[I Current](#) | [Past Issues](#) |