

North Pacific Landscape Conservation Cooperative



**John Mankowski,
North Pacific LCC
Coordinator**



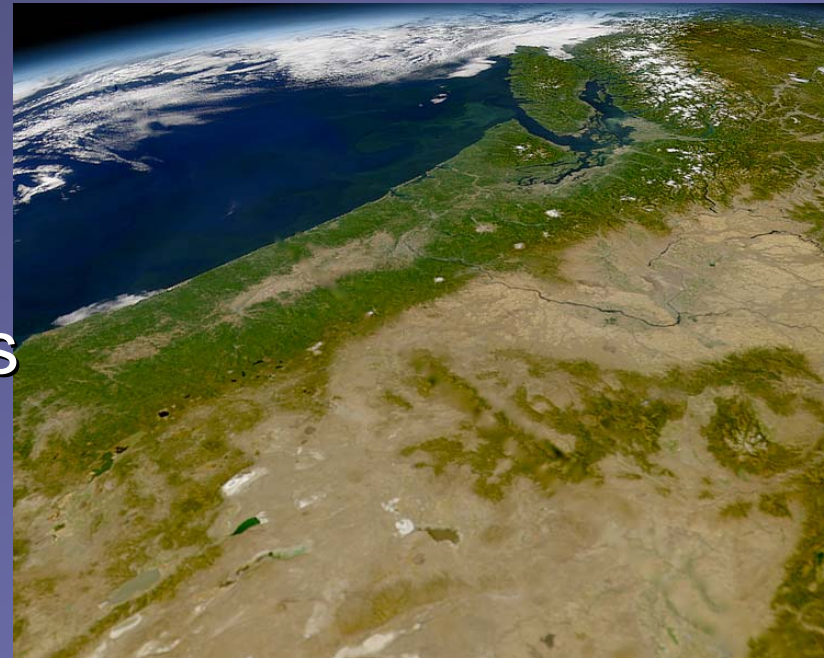
Today's Presentation

- General information LCCs
- North Pacific LCC
- Sean – Great Northern LCC



Today's Natural Resource Management Challenges

- Effects of Climate Change
- Other large-scale stressors
- Future management
 - Anticipate change
 - Work at landscape scale
 - Reduced agency resources
 - Work collaboratively
 - Trans-boundary



Landscape Conservation Cooperatives

- Science-based approach within a defined geographic area
- Convene partners
- Jointly address large-scale resource management and the science that informs it
 - Climate and related stressors
 - Promote/inform/coordinate conservation and sustainable resource management
 - Natural and cultural resources



Why Partnership Efforts?

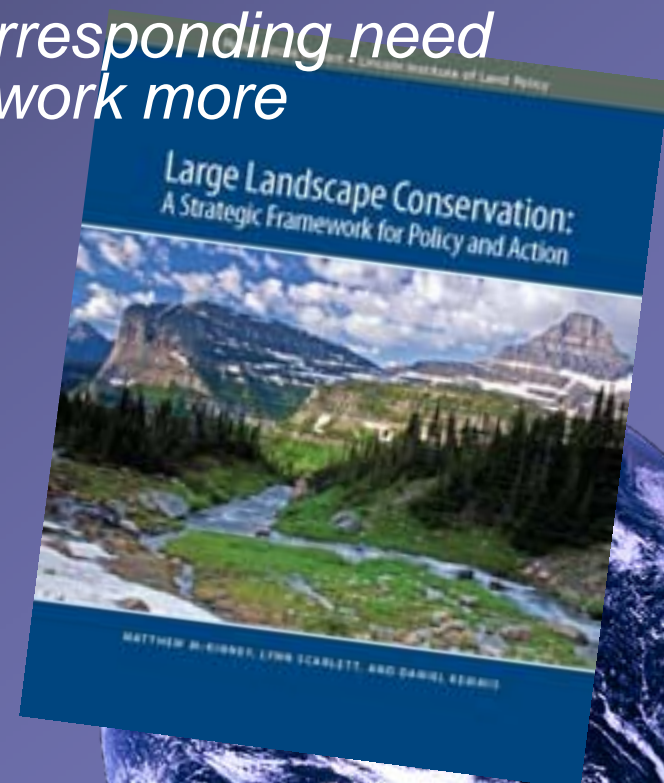
Report - Large Landscape Conservation: A Strategic Framework for Policy and Action

McKinney, Scarlett & Kemmis, 2010

“...there is a gap in governance and a corresponding need to create informal and formal ways to work more effectively across boundaries.”

Barriers to Landscape Conservation

- Lack of scientific information
- Lack of capacity to organize
- Lack of a strategy to coordinate
- Fragmented financial investments

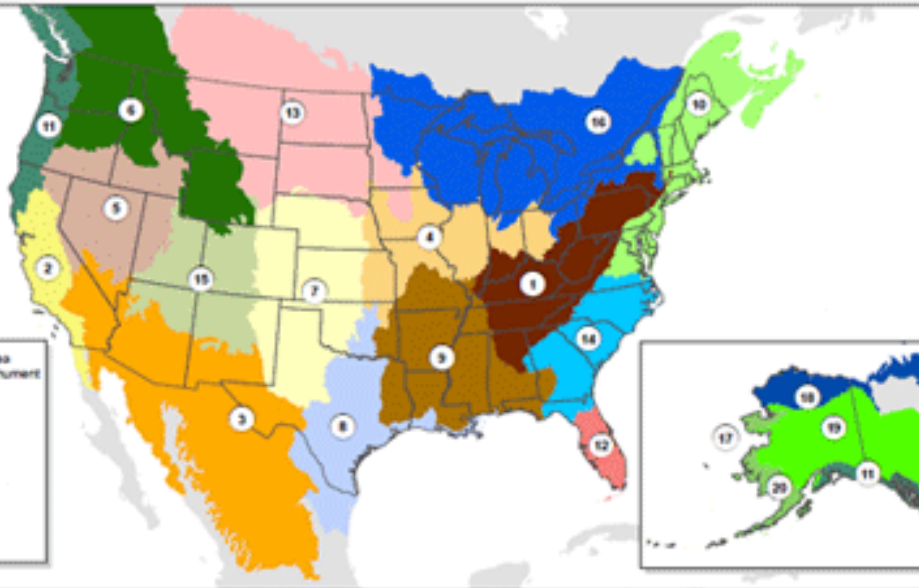


LCC Geographic Framework



U.S. Department of the Interior

Landscape Conservation Cooperatives - Interim Geographic Framework



Landscape Conservation Cooperatives	
1. Appalachian	6. Great Northern
2. California	7. Great Plains
3. Desert	8. Gulf Coast Prairie
4. Eastern Tallgrass Prairie and Big Rivers	9. Gulf Coastal Plains and Ozarks
5. Great Basin	10. North Atlantic
	11. North Pacific
	12. Peninsular Florida
	13. Plains and Prairie Potholes
	14. South Atlantic
	15. Southern Rockies
	16. Upper Midwest and Great Lakes
	17. Aleutian and Bering Sea Islands
	18. Arctic
	19. Northwestern Interior Forest
	20. Western Alaska
	21. Pacific Islands
	Unclassified

Albers Equal Area Conic NAD83
Produced by FWS, RTM, Denver, CO
Map Date: 03/18/2010

- 21 LCCs
- 9 initiated in FY2010



LANDSCAPE CONSERVATION COOPERATIVE (LCC) AREAS IN THE PACIFIC NORTHWEST



What Will LCCs Do?

- Inform resource management decision making
- Seek/provide applied science to address climate change and related environmental stressors
- Collaboratively prioritize and acquire management-relevant science – Leverage research/science priorities of others (CSC's, CESUs, PNW Labs, states, private sector)
- Serve as an International network for shared science and technology
- Provide a forum for sharing information – **Simplify access for practitioners**



What Will LCCs Not Do?

- Replace agency/government responsibilities
- Supersede agency decision making authority
- Initiate regulatory actions
- Negate value/role of existing partnerships and cooperatives
 - (e.g., Joint Ventures, Oregon's Renewable Energy Opportunities and Eastern OR Sagebrush Conservation Partnership - Sage grouse planning)



LCC Concepts

- ▣ Self-directed partnerships to address regional needs
- ▣ Guided by a Steering Committee
- ▣ Provide management direction and identify priorities
- ▣ LCC Coordinator/Science Coordinator
- ▣ Serve as a resource management-science partnership
- ▣ Leverage funding and expertise



North Pacific LCC



Includes:

Alaska
British Columbia
Washington
Oregon
California

- Extends over 2,200 mi. from north to south
- Approx. 204,000 sq. mi.
- Crest to the coasts
- Includes marine areas (nearshore)

Work with Existing Partnerships

Examples Include:

- Pacific Coast Joint Venture
- Alaska Coastal Rainforest Center
- Federal Climate Change Collaboration (C³)
- Northwest, Chugach, and Tongass Forest Plans
- Puget Sound Partnership
- Puget Sound and Columbia River Federal Caucuses
- North American Salmon Stronghold Partnership
- Lower Columbia River Estuary Partnership
- Pacific Salmon Commission
- Partners in Flight
- West Coast Governors Association
- Science and Research Organizations

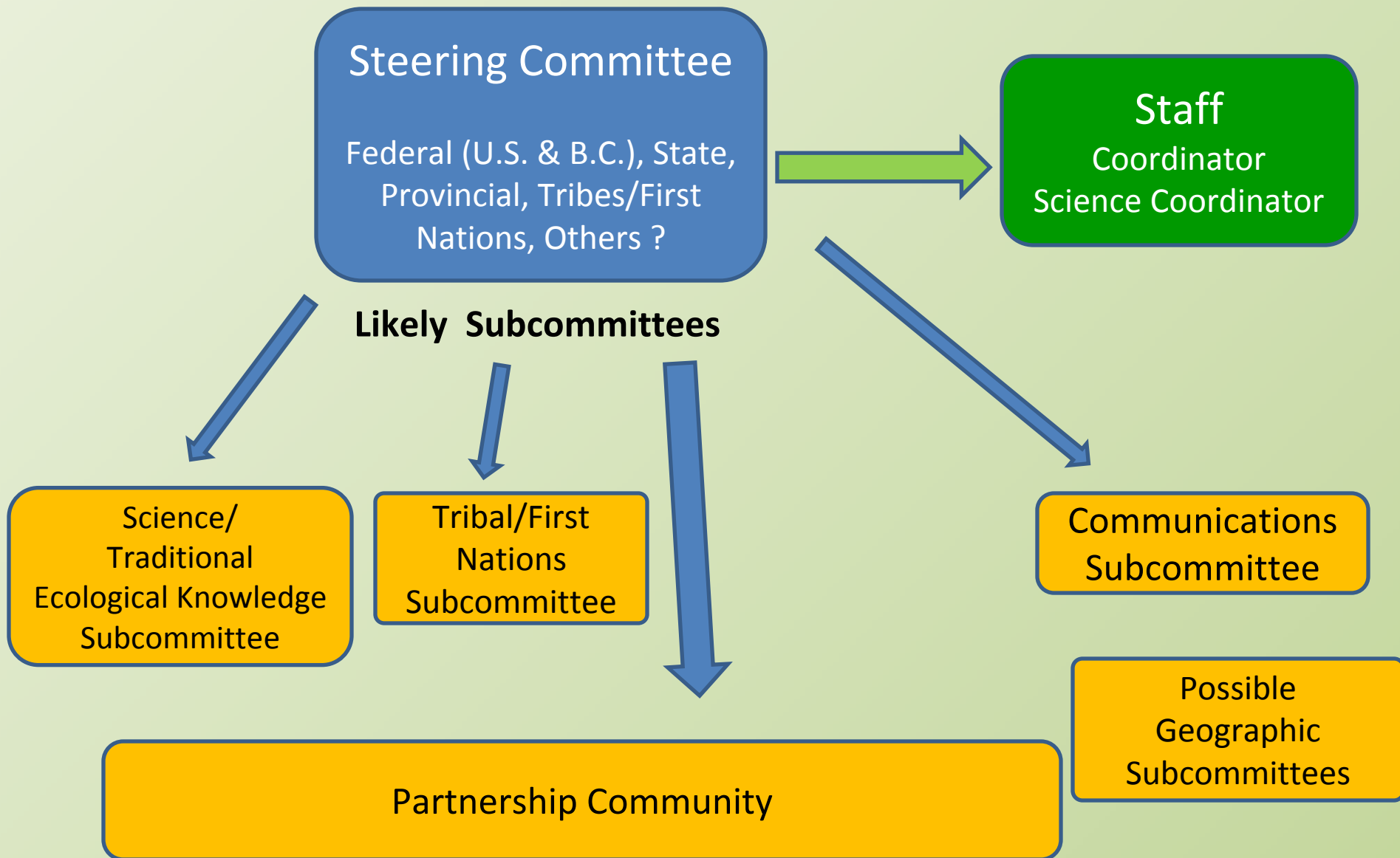


Mission Statement

The North Pacific Landscape Conservation Cooperative promotes development, coordination and dissemination of science to inform landscape-level conservation and sustainable resource management in the face of a changing climate and related stressors.

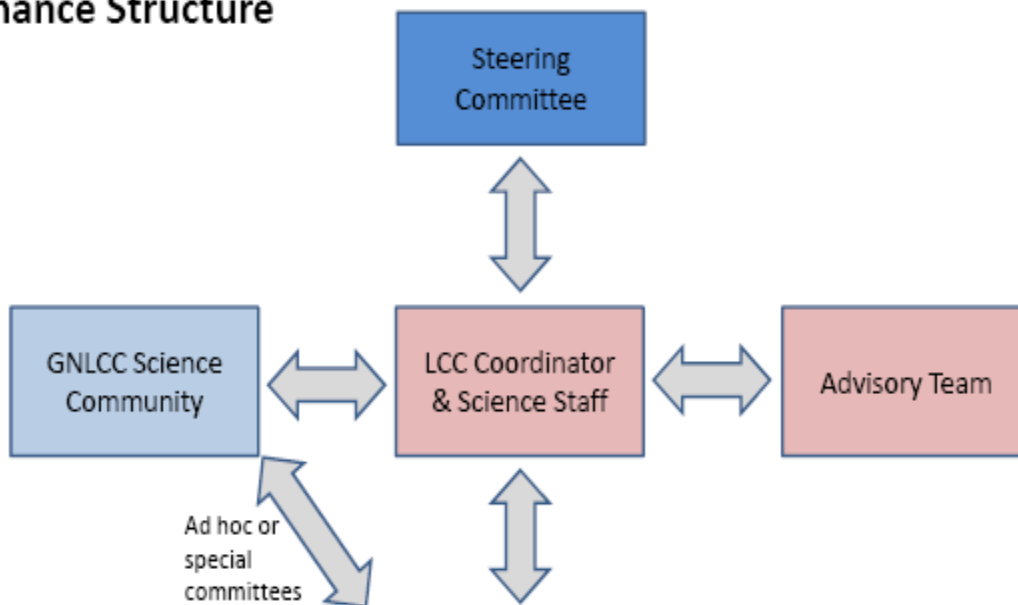


North Pacific Landscape Conservation Cooperative



Great Northern Landscape Conservation Cooperative

Governance Structure



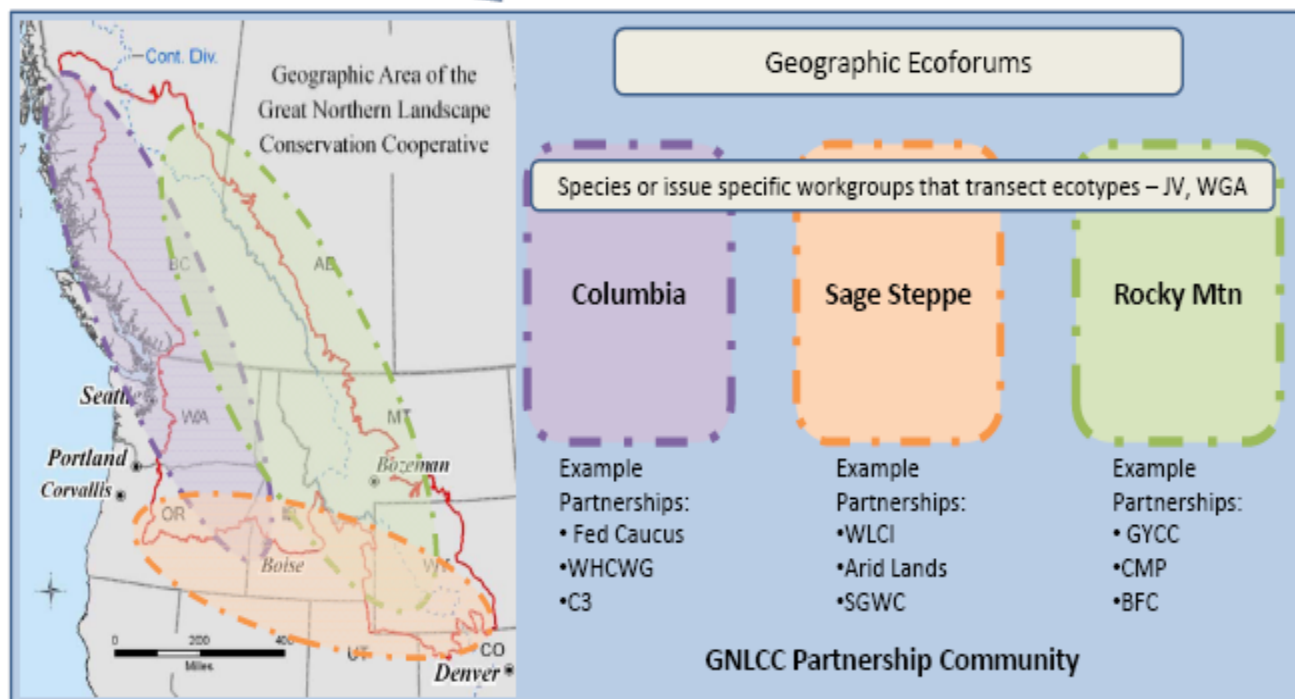
FUNCTIONS

Steering Committee or Executive Council

1. Set vision, Goals and Priorities for GNLCC
2. Provide direction to the GNLCC Coordinator and Staff
3. Approve Long-term Strategy and Operations
4. Approve GNLCC capacity needs
5. Approve funding for annual workplan including priority setting process

GNLCC Coordinator and Staff/ Advisory Team

1. Promote and communicate long-term vision
2. Develop and write long-term strategy and annual workplans
3. Coordinate science and information needs
4. Develop and implement process for operations
5. Develop annual workplan recommendations
6. Develop and revise Long-term Strategy
7. Coordinate, communicate and provide outreach to Science and Partnership Communities



North Pacific LCC – Progress to Date

- Early initiation in FY2010
- FWS, USFS, USGS, BLM, NPS, EPA, NOAA, PCJV, NRCS, AK, BC, WA, OR, & CA, Tribes, BIA
- Funded 11 projects (see handout)
- Science/Decision Framing Workshop
- Finalizing charter and creating sub-committees
- Partnership Outreach
- Establish science priorities, leverage funding



Climate Related Projects

\$800,000 – 11 Science Projects

- Projections of Change across Landscapes
- Vulnerability Assessments and Adaptation Planning
- Modeling Species and Habitat Distributions
- Information Synthesis and Dissemination

\$63,000 – Additional Efforts

- Univ. Washington and Univ. Alaska, SE – synthesis existing research/tools
- Support 3 regional climate science workshops



Possible Information Needs

- Downscaled climate models and landscape scales to predict effects on fish, wildlife, plants and their habitats
- Watershed resiliency with changing hydroperiods to inform restoration investments
- Analyses to support corridor strategy planning
- Identify and prioritize refugia for anadromous fish strongholds
- Predict invasive species threats and from native species range expansions
- Provide analyses to inform coordinated fish and wildlife response strategies, including public outreach, for disease and environmental–caused die-offs
- Design and evaluate short- and long term wildlife adaptation approaches
- Conduct risk and vulnerability assessments for sensitive species, habitats and ecological functions to focus conservation efforts
- Develop information to define factors affecting species recovery under future climate scenarios
- Identify areas of converging climate and non-climate stressors

North Pacific LCC – Next Steps



- Continue dialog with partners
- Begin information/data gap analysis
- Identify management/conservation questions
- Survey management-related science/conservation needs
- Finalize governance structure
- Identify science priorities
- Next round of RFPs –Spring¹⁸

FWS Contact Information

- John Mankowski (LCC Coordinator)
360 534-9330 or john_mankowski@fws.gov
- Mary Mahaffy (Science Coordinator)
360-753-7763 or mary_mahaffy@fws.gov

