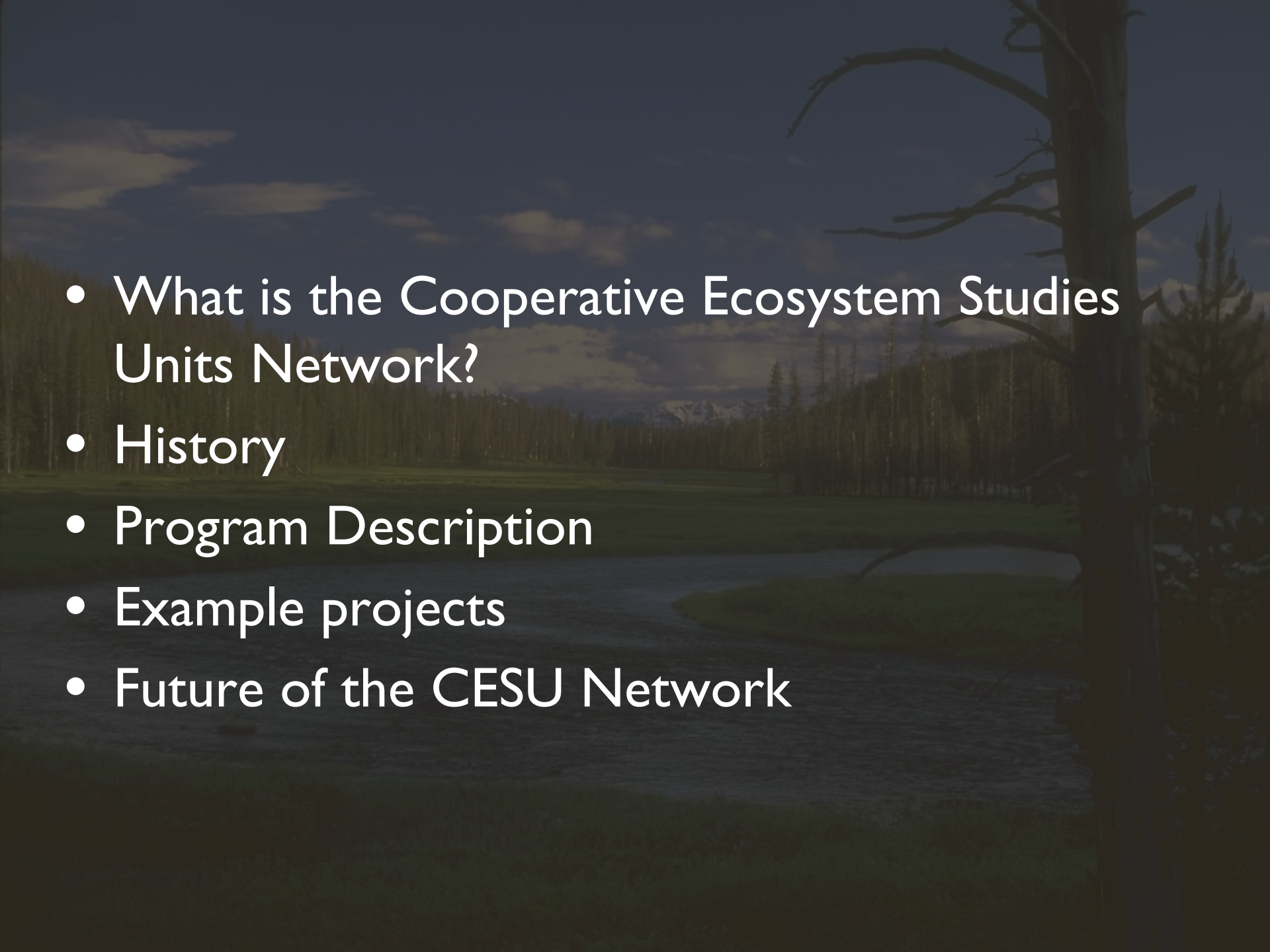


Cooperative Ecosystem Studies Units



Thomas E. Fish, National Coordinator

cesu.org

- 
- What is the Cooperative Ecosystem Studies Units Network?
 - History
 - Program Description
 - Example projects
 - Future of the CESU Network



What is the CESU Network?

A nationwide consortium of federal agencies, universities, conservation organizations, and other partners working together to support agency missions and informed public trust resource stewardship



What is the CESU Network?

- Anthropology to Zoology
- coordinated, collaborative, applied
- natural and cultural resource issues
- multiple scales
- ecosystem context



What is the CESU Network?

14 federal agencies

231 universities (47 minority serving)

64 state, tribal, and non-governmental

309 total partners

Since 1999, >7,500 projects involving over \$600M
(est.)



Bureau of Land Management



U.S. Fish and Wildlife Service



U.S. Geological Survey



National Park Service



Bureau of Reclamation



Bureau of Ocean Energy Management, Regulation and Enforcement



Natural Resources Conservation Service



U.S. Forest Service



Agricultural Research Service



National Oceanic and Atmospheric Administration



National Aeronautics and Space Administration



U.S. Army Corps of Engineers



Department of Defense (Installations & Environment)





CESU Network Objectives

- to provide timely scientific research, technical assistance, and education services to develop usable knowledge supporting public trust resource stewardship aligned with agency and partner missions;
- to create and maintain effective collaborative partnerships among federal and state agencies, universities, and other nonfederal partners to share resources and expertise;
- to promote/maintain high standards for scientific research, technical assistance, and educational activities and associated project outputs;
- to encourage professional development of federal scientists, technical staff, and managers through substantial involvement in projects;
- to help prepare future conservation professionals through direct involvement with real-life conservation issues and problem solving.



1999

- Rocky Mountains – University of Montana
- Colorado Plateau – Northern Arizona University
- North Atlantic Coast – University of Rhode Island
- Southern Appalachian Mountains – University of Tennessee




1999


2000

- Desert Southwest – University of Arizona
- Pacific Northwest – University of Washington
- South Florida-Caribbean – University of Miami
- Great Plains – University of Nebraska, Lincoln



▲
1999

▲
2000

▲
2001

- Chesapeake Watershed – University of Maryland
- Great Basin – University of Nevada, Reno



▲
1999

▲
2000

▲
2001

▲
2002

- Great Lakes - Northern Forest CESU – University of Minnesota
- Gulf Coast CESU – Texas A&M University



▲
1999

▲
2000

▲
2001

▲
2002

▲
2003

- North & West Alaska – University of Alaska
- Piedmont - South Atlantic Coast – University of Georgia
- Upper and Middle Mississippi Valley (now Great Rivers) – University of Missouri
- Californian – University of California, Berkeley
- Hawaii - Pacific Islands – University of Hawaii



CESU Cooperative Ecosystem Studies Units Network





Program Description

- established renewable Cooperative/Joint Venture Agreements with 5 year duration
- agreements renewed based on mutual consent, self-assessment, federal agency assessment, and independent external review
- many operational model variations



Program Description

- host university with administrative support staff
- multiple federal agencies
- partner institutions (at least one minority institution)
- federal managers committee
- role and mission statement
- strategic plan and annual work plans
- website
- annual partners meeting

CESU Council (13 federal agencies)

(program oversight)

**federal agency
regional / state offices**

(supervision)

**federal managers
committee**

(strategic plan)
(advice and guidance)
(leads 5-yr renewal process)

(annual work plan)

CESU

tribes

agencies

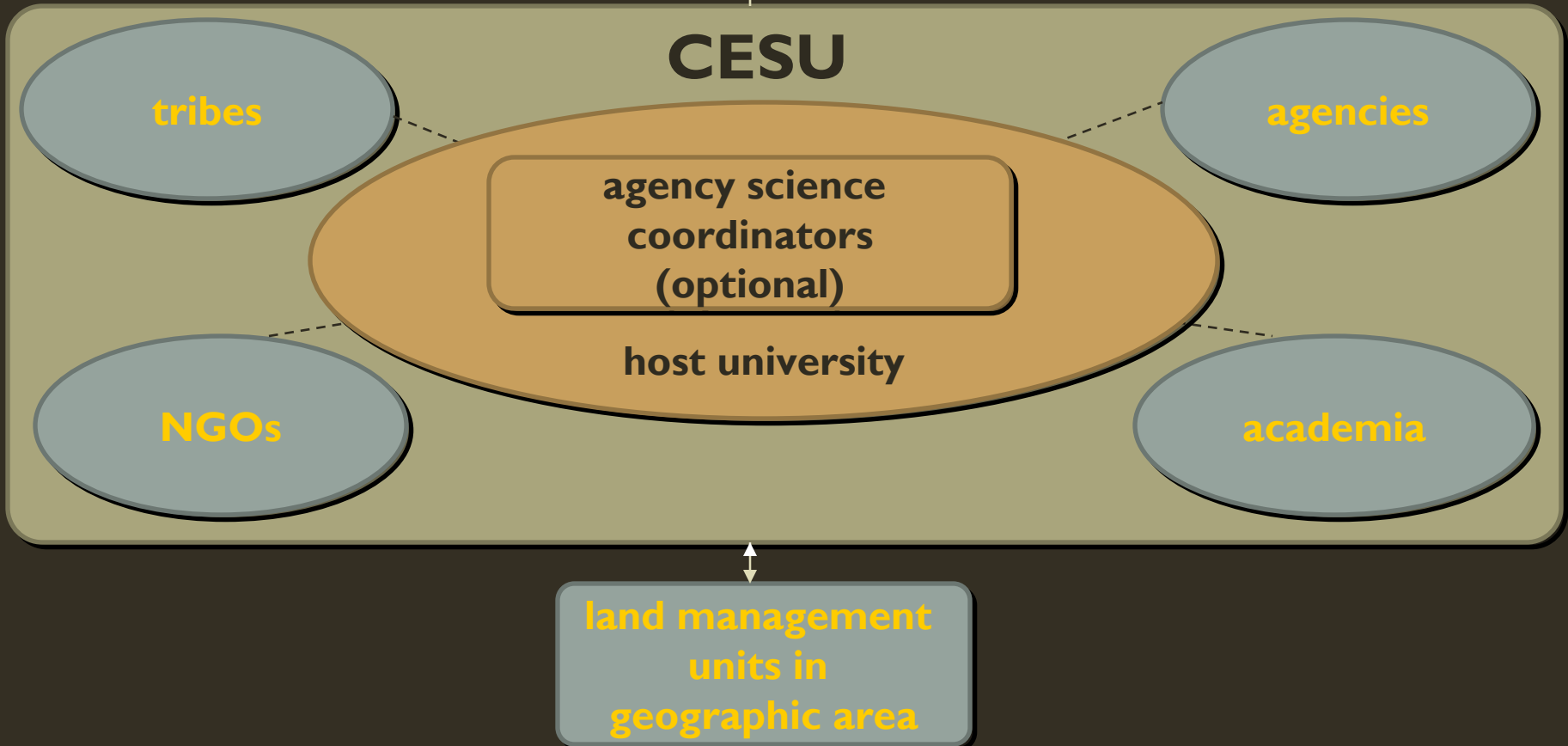
**agency science
coordinators
(optional)**

NGOs

academia

host university

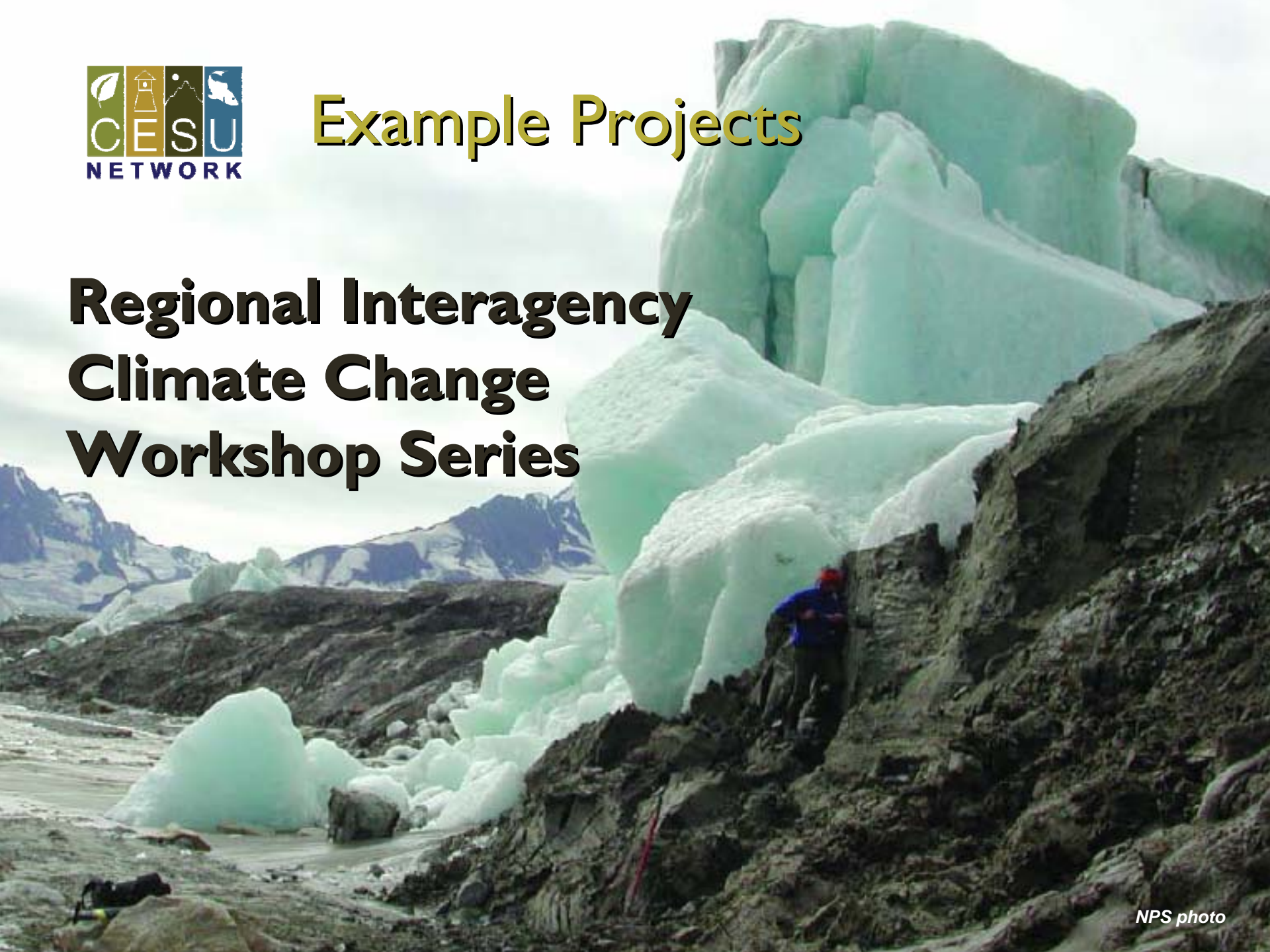
**land management
units in
geographic area**





Example Projects

Regional Interagency Climate Change Workshop Series





Example Projects

Salt Marsh Restoration in Chesapeake Bay



Example Projects

**Contaminants Assessment
in Southeast Alaska**



Example Projects

**Exotic Species Control
in South Florida**

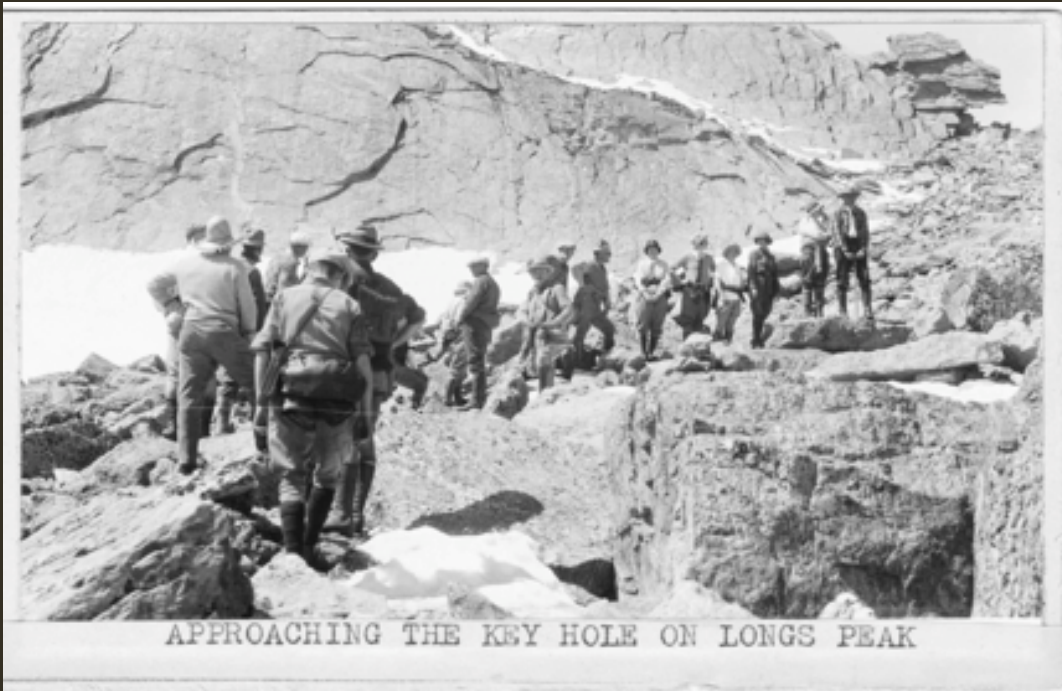


Example Projects

**Archaeological Field School
in Hawaii**



Example Projects



**People and
Nature on the
Mountaintop**

A Resource and Impact Study of Longs Peak in Rocky Mountain National Park

Cooperative Ecosystem Studies Units Network

NPS photo



Example Projects

Costal Watershed Condition Assessments



Example Projects



works to prevent encroachment around military lands, encourage compatible resource-use decisions, and improve coordination among regions, states, communities, and military services.





Key Initiatives

- 10-year Program Evaluation and Project Inventory
- CESU Network Administrative History
- Strategic Plan Revision
- Administrative Handbook
- Collaborative Science Program Summit
- 2012 CESU Network National Meeting (June)



2010 National Meeting



Cooperative Ecosystem Studies Units Network



Future of the CESU Network

- adding new federal and nonfederal partners
- expanding participation and scope of the CESU Network with existing network partners
 - sustainability science
 - green engineering and technology
 - renewable/sustainable energy
 - green workforce development
 - international collaboration
- elevating opportunities for capacity building for tomorrow's environmental professionals
 - national office fellowship program
 - system-wide internship program

Cooperative Ecosystem Studies Units



Thomas E. Fish, National Coordinator

cesu.org

tom_fish@nps.gov