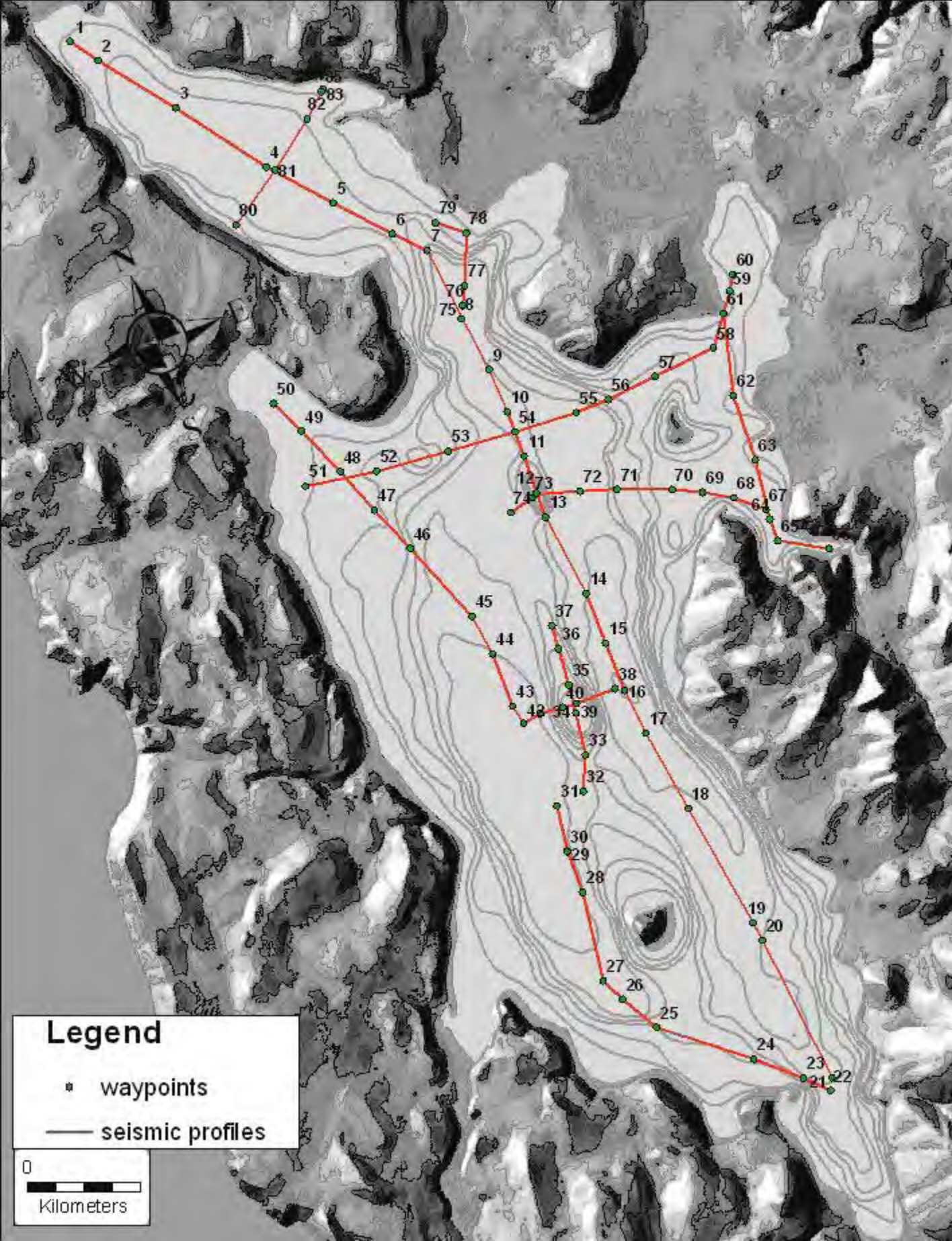


APPENDIX A: Seismic Profiles

The following pages contain high-resolution scans of seismic profiles obtained as a part of this research. Scale bars on images are 5 m vertical and 100 m horizontal, for a 4x vertical exaggeration. The first page shows waypoints, which are indicated on each core.

Because of their original size and format, these charts are not conducive to printing.

A separate PDF is available showing marked-up images (bottom features marked). Due to a technical glitch, I do not have images available which are both scaled and marked up.



Legend

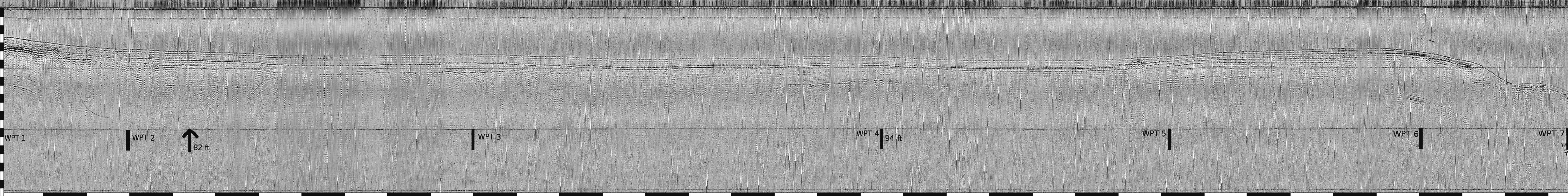
• waypoints

— seismic profiles

0



Kilometers



WPT 1

WPT 2



WPT 3

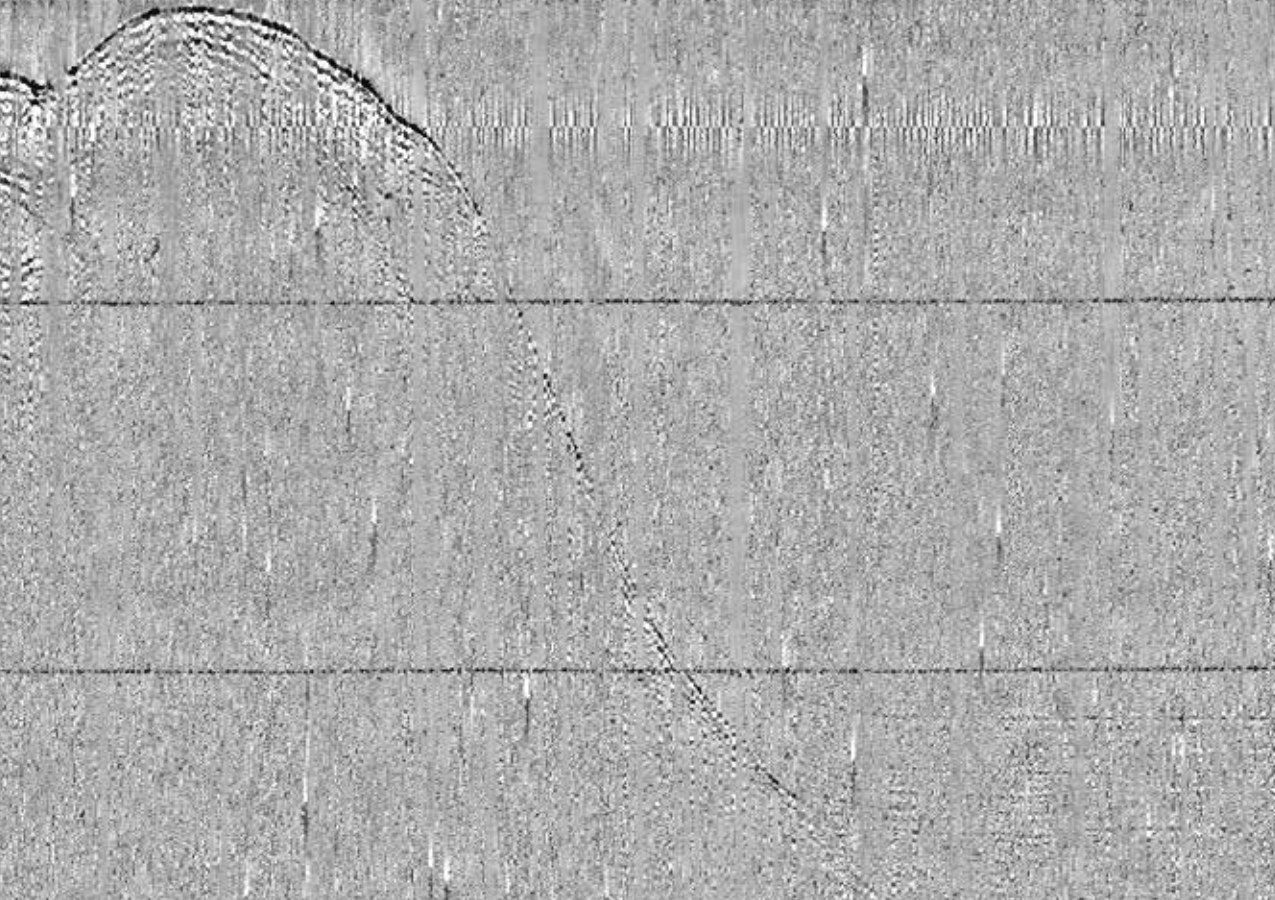
WPT 4 94 ft

WPT 5

WPT 6

WPT 7

EAGLE PT TO S.END WPT 7-22



WPT 12
WPT 13
(CUTS)

↑ 230 ft

↑ 195 ft

↑ 300 ft

WPT 7

WPT 8

WPT 9

WPT 10

WPT 11

WPT 12

WPT 13

WPT 14

285 ft WPT 15

WPT 16

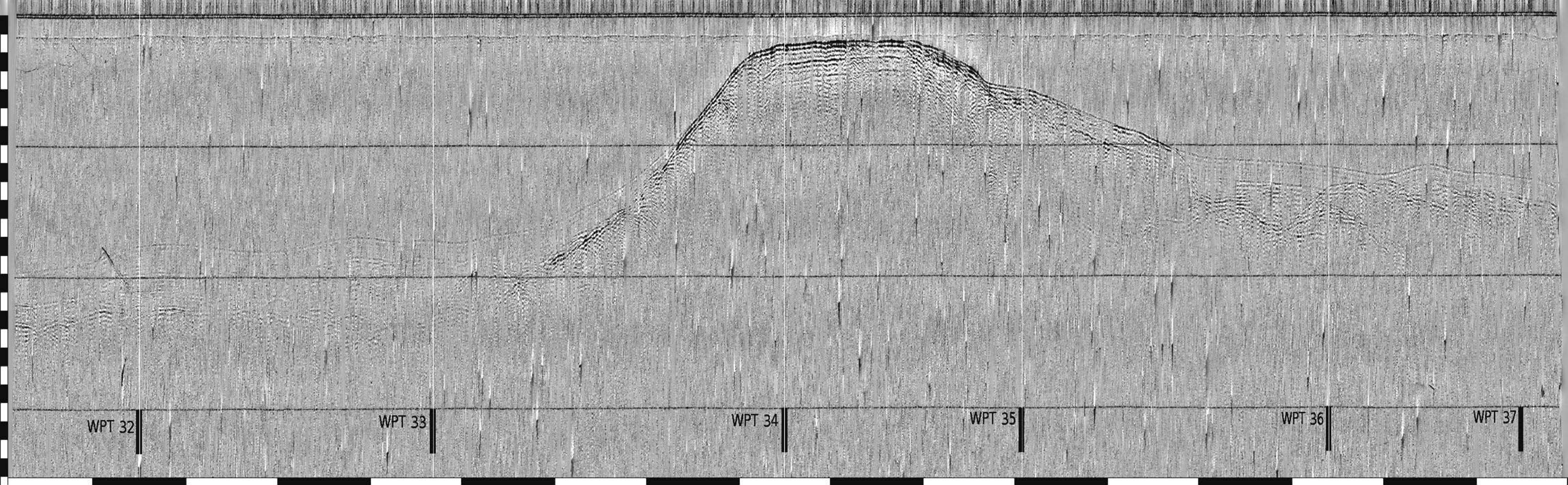
WPT 17

WPT 18

WPT 19

WPT 20

WPT 21



WPT 32

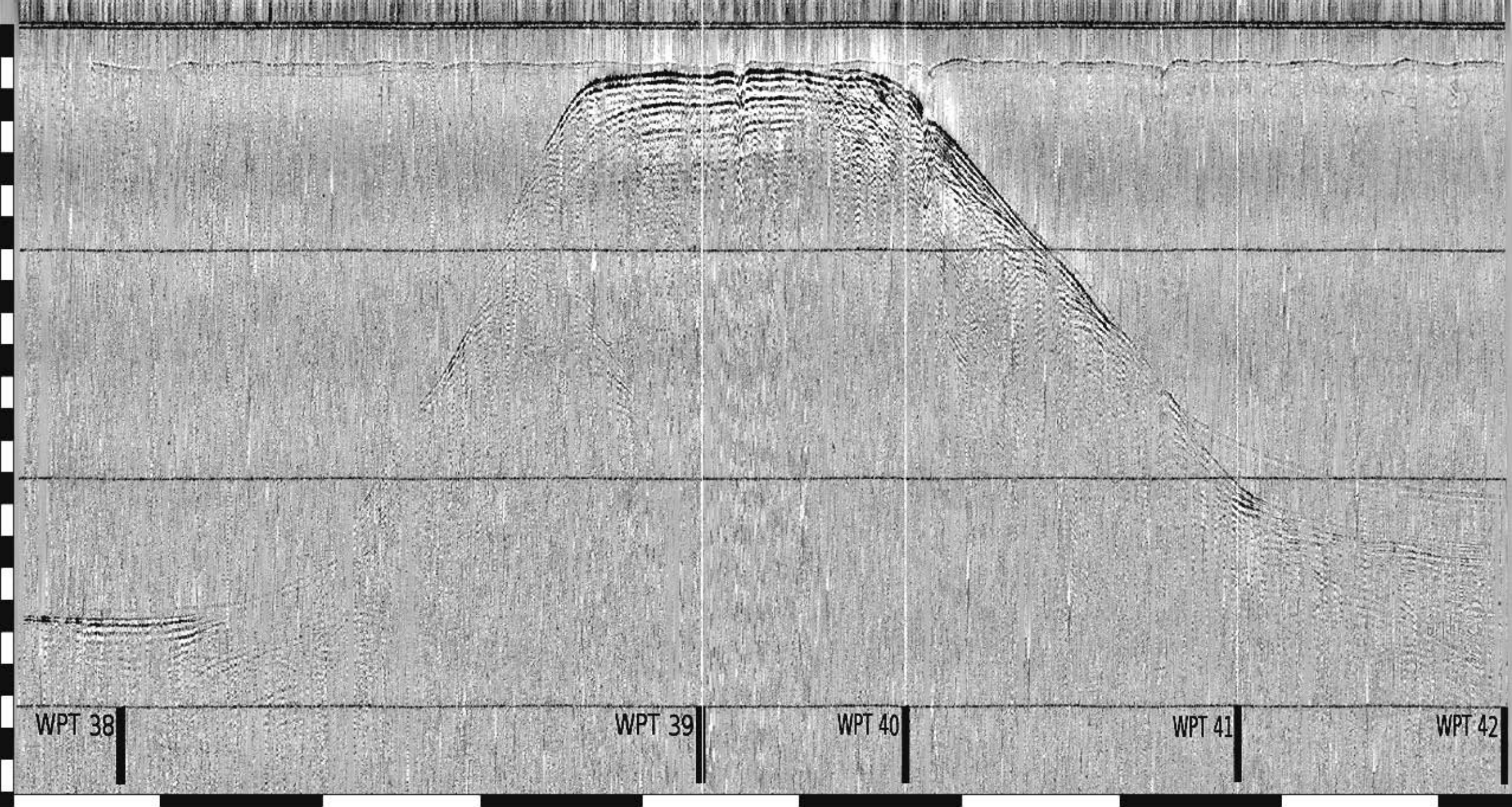
WPT 33

WPT 34

WPT 35

WPT 36

WPT 37



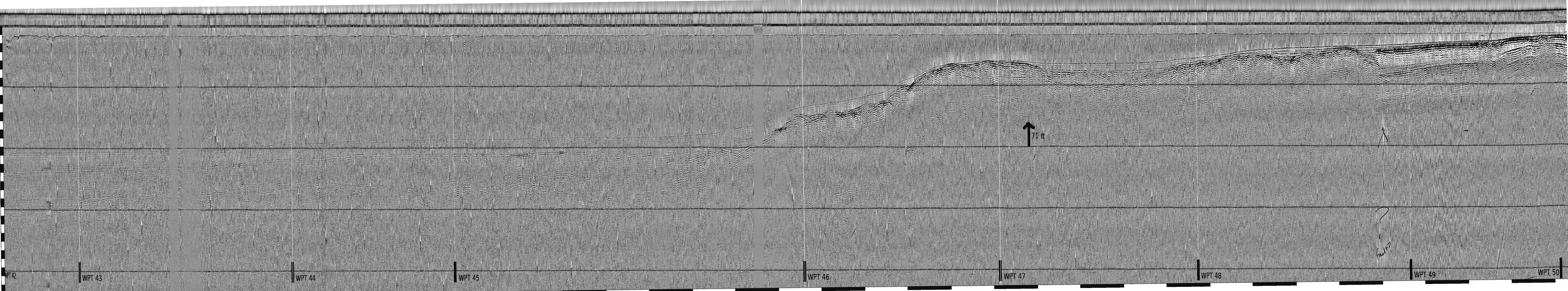
WPT 38

WPT 39

WPT 40

WPT 41

WPT 42



WPT 42

WPT 43

WPT 44

WPT 45

WPT 46

WPT 47

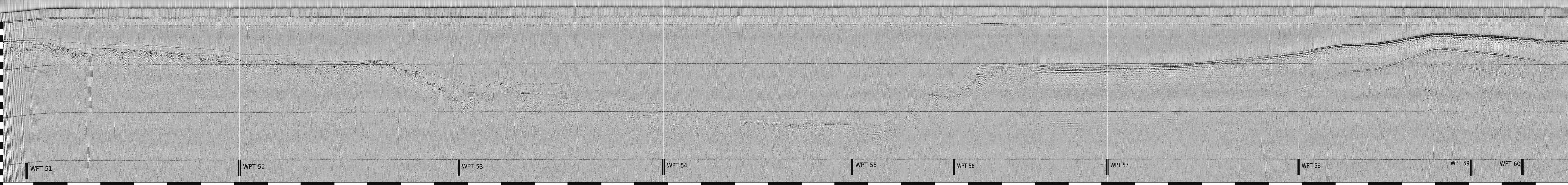
WPT 48

WPT 49

WPT 50

71 ft

Fault?



WPT 51

WPT 52

WPT 53

WPT 54

WPT 55

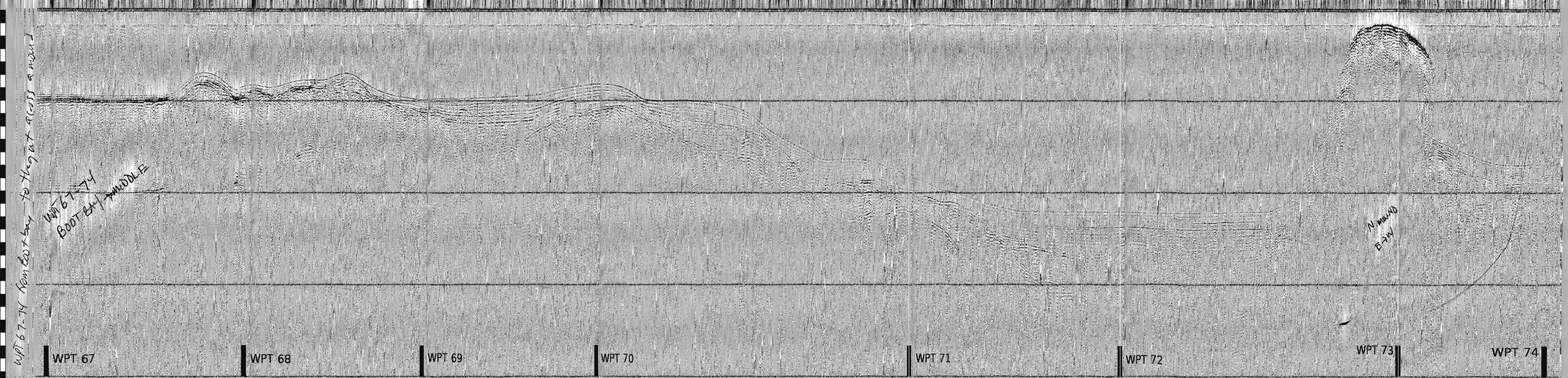
WPT 56

WPT 57

WPT 58

WPT 59

WPT 60



WPT 67-74 from boat bay to the gully across a mound

WPT 67-74
BOOT BAY MIDDLE

N MOUND
E-W

WPT 67 WPT 68 WPT 69 WPT 70 WPT 71 WPT 72 WPT 73 WPT 74

START
OF
N. END
XSEC
W → E
WPTS

80-83

WPT 80

WPT 81

WPT 82

WPT 83

END
E
SIDE