

# Pacific Northwest CESU

**2017 Fall Partners Meeting**

**May 9<sup>th</sup> 10:00am - 11:30am (PDT)**

**University of Washington**

**Teleconference**

**877-909-6472**

**Passcode: 3686248**



## Agenda

1. Welcome and Introductions
2. PNW CESU Program Activity and Work Plan
3. PNW CESU FY16 Fiscal Review
4. National CESU Updates
5. Technical Representative Role
6. Strategic Plan Review
7. Partner Updates
8. Next Meeting

# PNW CESU Members

**12 Federal Agencies, 19 Partners (18 Universities, 1 State Agency)**

## Federal agencies

- Bureau of Indian Affairs (BIA)
- Bureau of Land Management (BLM)
- Bureau of Reclamation (USBR)
- Bureau of Ocean Energy Management (BOEM)
- Department of Defense
- National Oceanic and Atmospheric Administration (NOAA)
- National Park Service (NPS)
- Natural Resources Conservation Service (NRCS)
- U.S. Army Corps of Engineers (USACE)
- U.S. Fish and Wildlife Service (USFWS)
- U.S. Forest Service (USFS) - Pacific Northwest Research Station
- U.S. Geological Survey (USGS)

## Partner Organizations

### Universities

- University of Washington - Host University
- Central Washington University
- Eastern Washington University
- Heritage University
- Oregon Institute of Technology
- Oregon State University
- Portland State University
- Saint Mary's University of Minnesota
- Seattle University
- Southern Oregon University
- University of Alaska Anchorage
- University of Alaska Southeast
- University of British Columbia
- University of Idaho
- University of Oregon
- University of Vermont and State Agriculture College
- Washington State University
- Western Washington University

### State Agencies

- Alaska Department of Fish and Game

## Pacific Northwest CESU Program Activity

**Oct 2015:** PNW CESU Master Agreement 2015-2020 (10/21/15 – 8/15/2020)

**Dec 2015:** PNW CESU Fall Partners Webinar

**Feb 2016:** Bureau of Indian Affairs joined PNW CESU via Amendment 1.

**May 2016:** PNW CESU new website: <http://depts.washington.edu/pnwcesu/>

**June 2016:** National CESU Network Meeting held.

**Nov 2016:** National CESU Network Director Tom Fish visited PNW CESU.

**Dec 2016:** Seattle University membership application received and vote held.

**Dec 2016:** Host Support Task Agreement issued.

**Jan 2017:** New Interim SEFS Director Dr. Elizabeth Van Volkenburgh as new PNW CESU Co-Leader

**Feb 2017:** PNW CESU Cooperative Ventures e-Newsletter

**Apr 2017:** Seattle University joining PNW CESU via pending Amendment 2.

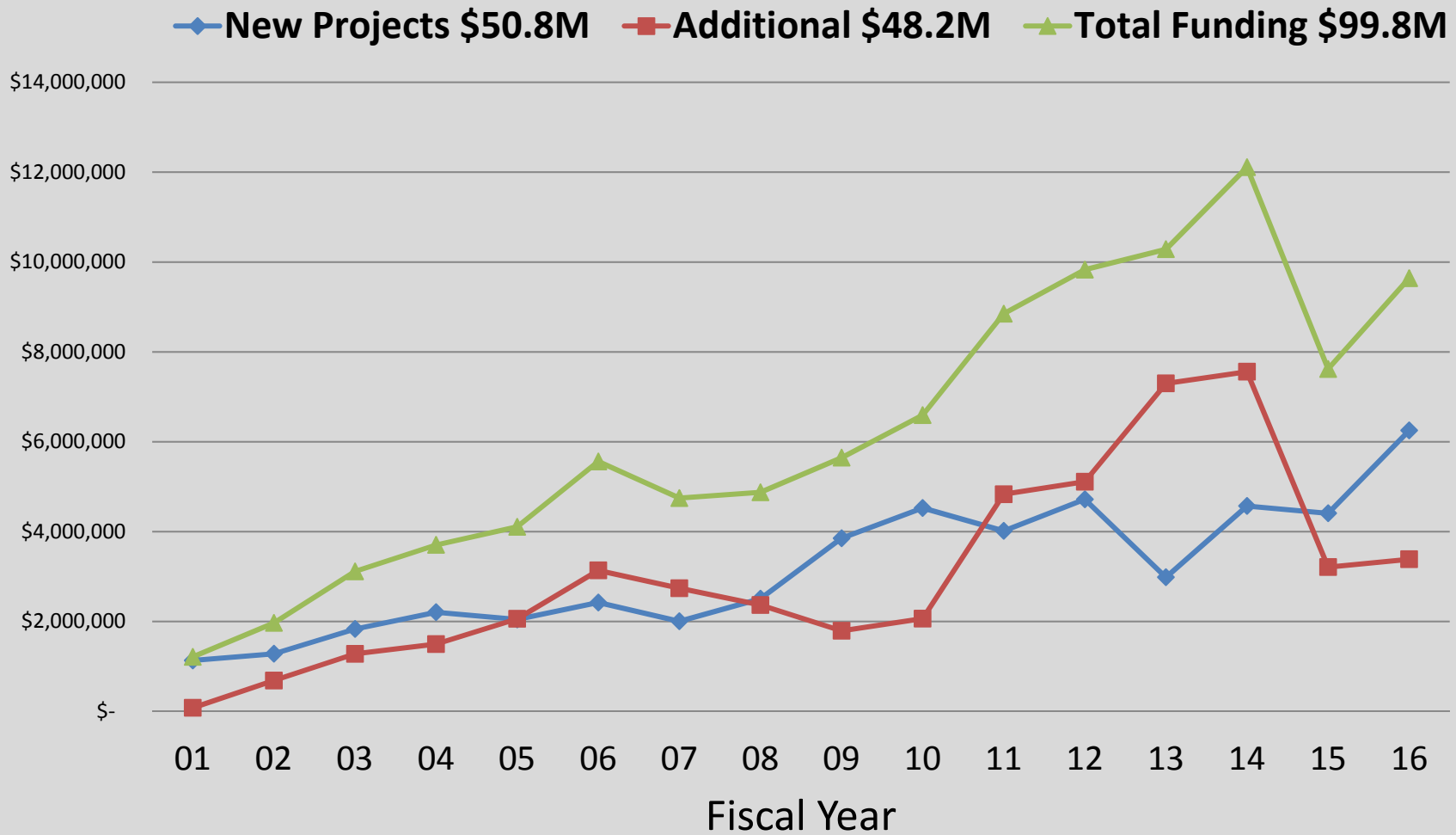
## PNW CESU 2017 Annual Work Plan

- Website maintenance: post funding announcements, events, completed project final reports, agency forms and other items useful for conducting agreements.
- Project tracking: solicit and summarize project information, share via the Project Library webpage.
- PNW CESU Annual meeting preparations.
- Review Strategic Plan.
- Process any new member applications as needed.
- Prepare for new UW PNW CESU Co-Leader.
- Produce and distribute newsletters. Request approval from PIs and ATRs and add them to subscriber list.



# FY01 - FY16 Funding Overview

**\$99.8M** towards **815** projects





# FY10 - FY16 Funding Summary

**\$64.8M** towards **437** projects

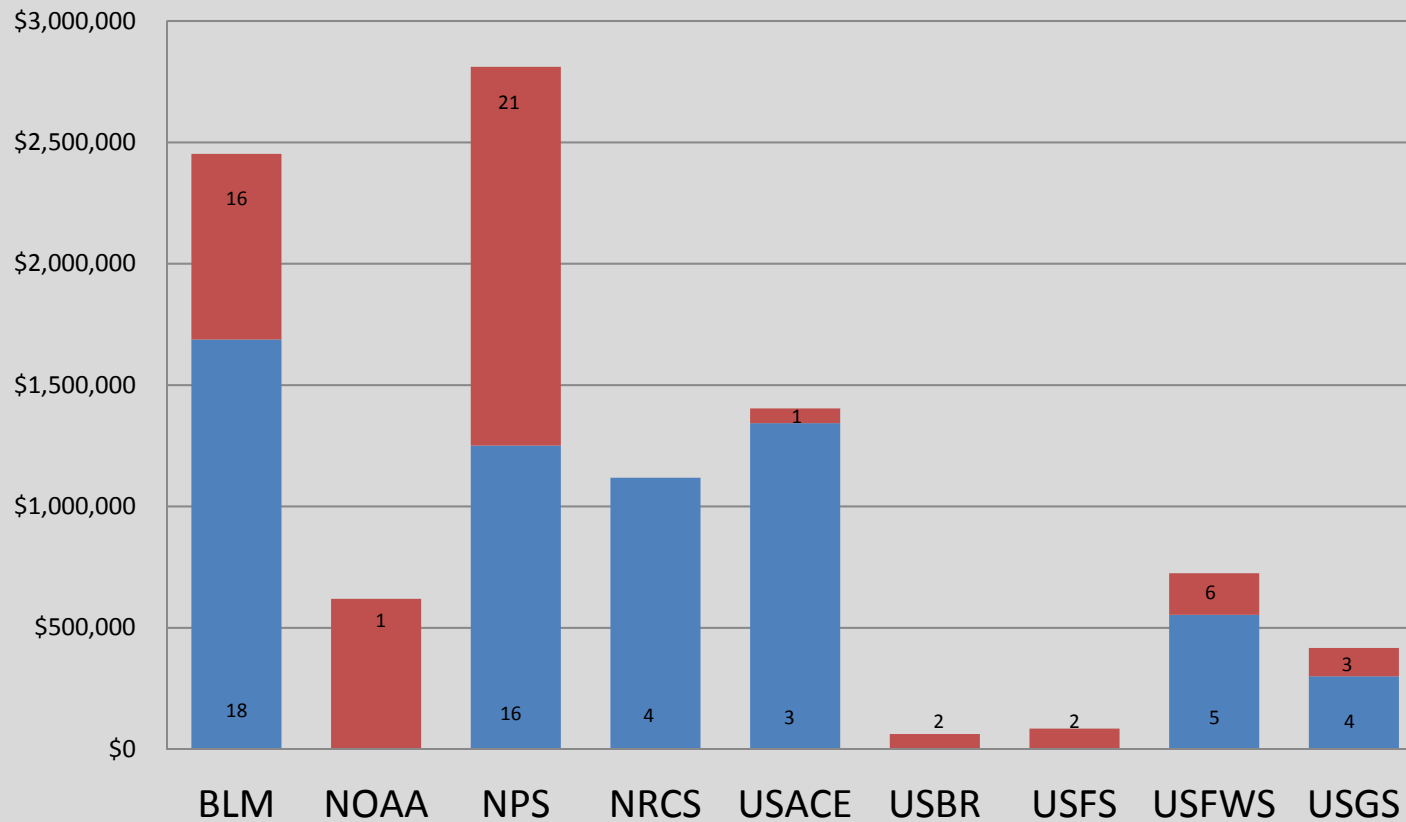
FY	# of New Projects	New Project \$	# of Cost Mods	Mod \$	Total Funding \$	% change from previous year
<b>FY16</b>	<b>50</b>	<b>\$6,253,242</b>	<b>51</b>	<b>\$3,385,811</b>	<b>\$9,639,053</b>	<b>28.3%</b>
FY15	59	\$4,520,772	63	\$2,989,587	\$7,510,359	-38.0%
FY14	62	\$4,570,230	75	\$7,538,491	\$12,108,721	17.7%
FY13	52	\$2,985,098	65	\$7,299,476	\$10,284,574	4.6%
FY12	57	\$4,718,908	83	\$5,110,726	\$9,829,634	11.1%
FY11	69	\$4,017,021	94	\$4,832,078	\$8,849,099	34.2%
FY10	87	\$4,527,102	51	\$2,065,358	\$6,592,460	14.4%



# PNW FY16 Funding by Agency

9 Agencies supplied \$9.6M

■ New Projects \$6.2M ■ Additional \$3.4M



Agency	Total Funding
BLM	\$2,452,586
NOAA	\$619,331
NPS	\$2,810,977
NRCS	\$1,118,034
USACE	\$1,403,563
USBR	\$62,319
USFS	\$84,442
USFWS	\$724,847
USGS	\$416,928

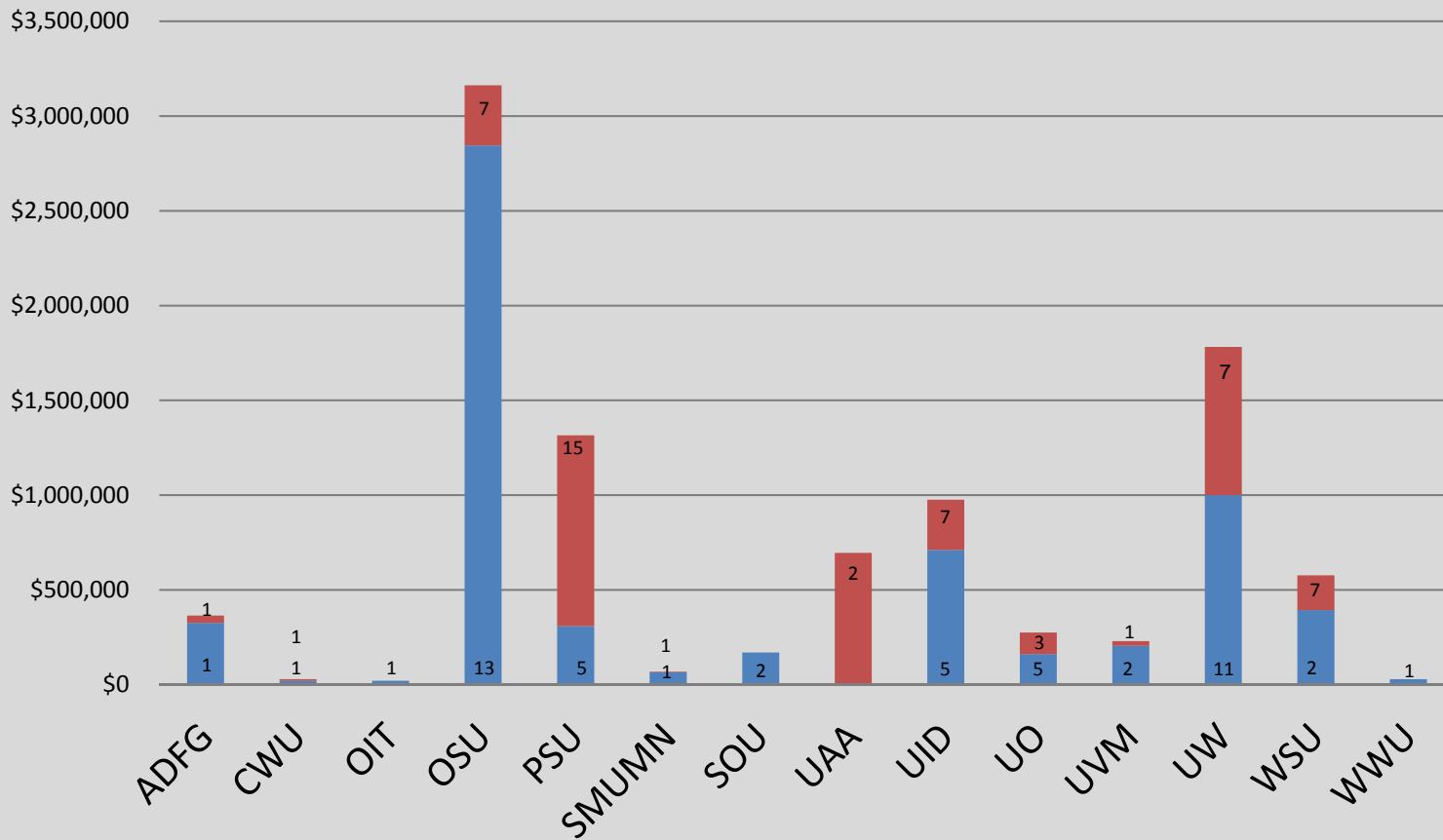




# PNW FY16 Funding by Partner

## 14 partners received funding

■ New Projects \$6.2M ■ Additional \$3.4M



Partner	Total Funding
ADFG	\$364,193
CWU	\$29,000
OIT	\$21,000
OSU	\$3,108,183
PSU	\$1,315,410
SMUMN	\$68,012
SOU	\$169,888
UAA	\$695,467
UID	\$975,732
UO	\$274,675
UVM	\$229,674
UW	\$1,782,055
WSU	\$576,546
WWU	\$29,218

## PNW FY16 Projects

Agency	Partner	Project ID	Funding	Title
BLM	OSU	L16AC00009	\$15,000	BLM OR/WA 4-H International Summer Camp
BLM	OSU	L16AC00091	\$556,110	BLM OR/WA CESU Sage Grouse Habitat Monitoring and Assessment
BLM	PSU	L16AC00161	\$19,853	Plant Conservation - Citizen Science
BLM	PSU	L16AC00164	\$124,166	OR Biodiversity Information Center and Biological Conservation
BLM	OSU	L16AC00166	\$7,553	Central Oregon Live Fules Moisture Monitoring Project
BLM	UW	L16AC00167	\$50,800	Rare Care and Plant Conservation
BLM	SOU	L16AC00169	\$14,129	O&C Railroad Buck Rock Tunnel
BLM	UO	L16AC00203	\$35,000	CCS Cultural Rimrock Draw Rockshelter
BLM	OSU	L16AC00229	\$320,000	BLM OR/WA Pollinators, Western Oregon
BLM	UO	L16AC00285	\$45,000	BLM OR/WA CESU Potential Fossil Yield Classification and Curation
BLM	UO	L16AC00286	\$26,000	BLM OR/WA CESU Connley Caves Curation
BLM	UO	L16AC00287	\$30,000	BLM OR/WA CESU Analysis of Fish Remains in the Paisley Caves Collection
BLM	UO	L16AC00288	\$25,000	BLM OR/WA CESU Digitization of Artifacts from Northern Great Basin
BLM	OIT	L16AC00292	\$21,000	CESU Drought and Sage Brush: Management Implications
BLM	CWU	L16AC00305	\$20,000	Iceberg Point Cultural Field School
BLM	UW	L16AC00346	\$158,000	BLM OR/WA PNW CESU Cooperative Research
BLM	OSU	L16AC00348	\$200,000	BLM OR/WA PNW CESU Cooperative Research
BLM	UID	L16AC00349	\$20,000	BLM OR/WA PNW CESU COOPERATIVE RESEARCH

## PNW FY16 Projects

Agency	Partner	Project ID	Funding	Title
NOAA	UAA	NOAA1	\$619,322	Kachemak Bay NERR
NPS	UW	P16AC00082	\$75,558	Evaluate displacement of birds by recreational activities in Denali National Park
NPS	UVM	P16AC00135	\$25,000	Integration and Synthesis of the Scientific and Professional Literature on Soundscapes and Night Skies and Their Relationship to Outdoor Recreation
NPS	OSU	P16AC00349	\$17,390	Supporting the Ocean Noise Reference Station Network with Underwater Acoustic Monitoring at Buck Island Reef National Monument
NPS	UW	P16AC00701	\$9,988	Development of a Strategic Marketing Plan to Improve Concession Opportunities
NPS	SOU	P16AC00848	\$155,759	Completing Vegetation Mapping Products of Crater Lake National Park and Updating Vegetation Maps of Oregon Caves National Monument
NPS	ADFG	P16AC01044	\$325,685	Yukon-Charley Rivers National Preserve Harvest Surveys
NPS	WWU	P16AC01065	\$29,218	Assessing the Ecological Condition of Lakes in the North Cascades National Park Service Complex
NPS	UVM	P16AC01075	\$180,000	Stabilization and Repair of the Bartlett Cabin, Pecos National Historical Park
NPS	OSU	P16AC01362	\$31,476	Determining Status of Surface Water Quality in Parks of the Pacific West Region
NPS	UID	P16AC01416	\$61,567	Avian Inventory and Habitat Analysis of the Weippe Prairie, Nez Perce National Historical Park
NPS	UID	P16AC01458	\$41,416	Technical Assistance in Developing Vegetation Monitoring Protocols for the Upper Columbia Basin Network
NPS	PSU	P16AC01483	\$74,736	Traditional Cultural Properties and Planning at Yosemite National Park
NPS	UID	P16AC01609	\$65,391	Camas Propagation Research for Restoration of Weippe Prairie, Nez Perce National Historical Park
NPS	SMUMN	P16AC01754	\$65,009	Natural Resource Condition Assessments for Cumberland Island and Cape Hatteras
NPS	UW	P16AC01781	\$49,623	Natural Resource Condition Assessment and Climate Change Vulnerability Assessment for Oregon Caves National Monument and Preserve
NPS	UW	P16AC01846	\$42,800	Leadership, Coordination, and Administrative Oversight for the Pacific Northwest Cooperative Ecosystem Studies Unit (PNW CESU)
NRCS	OSU	68-7482-16-502	\$162,800	Aerial surveys to estimate lesser prairie-chicken population response to USDA Farm Bill program

## PNW FY16 Projects

Agency	Partner	Project ID	Funding	Title
NRCS	OSU	68-7482-16-527	\$100,154	Evaluating Greater Sage-Grouse response to landscape-level removal of encroaching juniper
NRCS	OSU	68-7482-16-533	\$701,040	Lesser Prairie Chicken Initiative
NRCS	OSU	68-7482-16-58	\$154,040	Delivery Soil Health Assessment
USACE	UID	W912HZ-16-2-0013	\$522,481	Columbia River Basin (CRB) Fish Monitoring and Evaluation Studies
USACE	OSU	W912HZ-16-2-0030	\$535,872	Willamette River Instream Ecological Flow Science Review and Analyses Prioritization” and “Adult Salmonids Trap and Transport Success Above Dams
USACE	UW	W912HZ-16-2-0031	\$284,968	Evaluating Flora and Fauna Diversity in the John Day/ Willow Creek Project for Special Status Species Protection
USFWS	UW	F16AC00071	\$40,075	Stormwater Threats and Clean Water Solutions for Puget Sound Salmonids and their Habitats
USFWS	WSU	F16AC00236	\$24,546	Student Experience Program in Cultural Resource Management
USFWS	WSU	F16AC00305	\$369,100	Field Test of Plants and Fungi on Bioretention Performance Over Time
USFWS	PSU	F16AC00489	\$19,446	Synthesis of current science and development of decision support tools, for assisted migration of freshwater species
USFWS	UW	F16AC01190	\$100,000	Building Tribal Capacity for Climate Change Vulnerability Assessment
USGS	UW	G16AC00065	\$50,000	Predicting the Next High-Impact Insect Invasion: Elucidating Traits and Factors Determining Risk of Introduced Herbivorous Insects on North American Native Plants
USGS	PSU	G16AC00114	\$70,100	Remote Sensing of Glaciers and Glacier Change in the American West
USGS	OSU	G16AC00316	\$42,998	A Multi-Sensor Stream Monitor for Headwater Streams
USGS	UW	G16AC00434	\$137,395	Identifying and Evaluating Refugia from Drought and Climate Change in the Pacific Northwest

# Technical Representatives Role

Technical representatives relay information from the CESU Director and communicate about CESU Network opportunities within their tribe or partner institution.

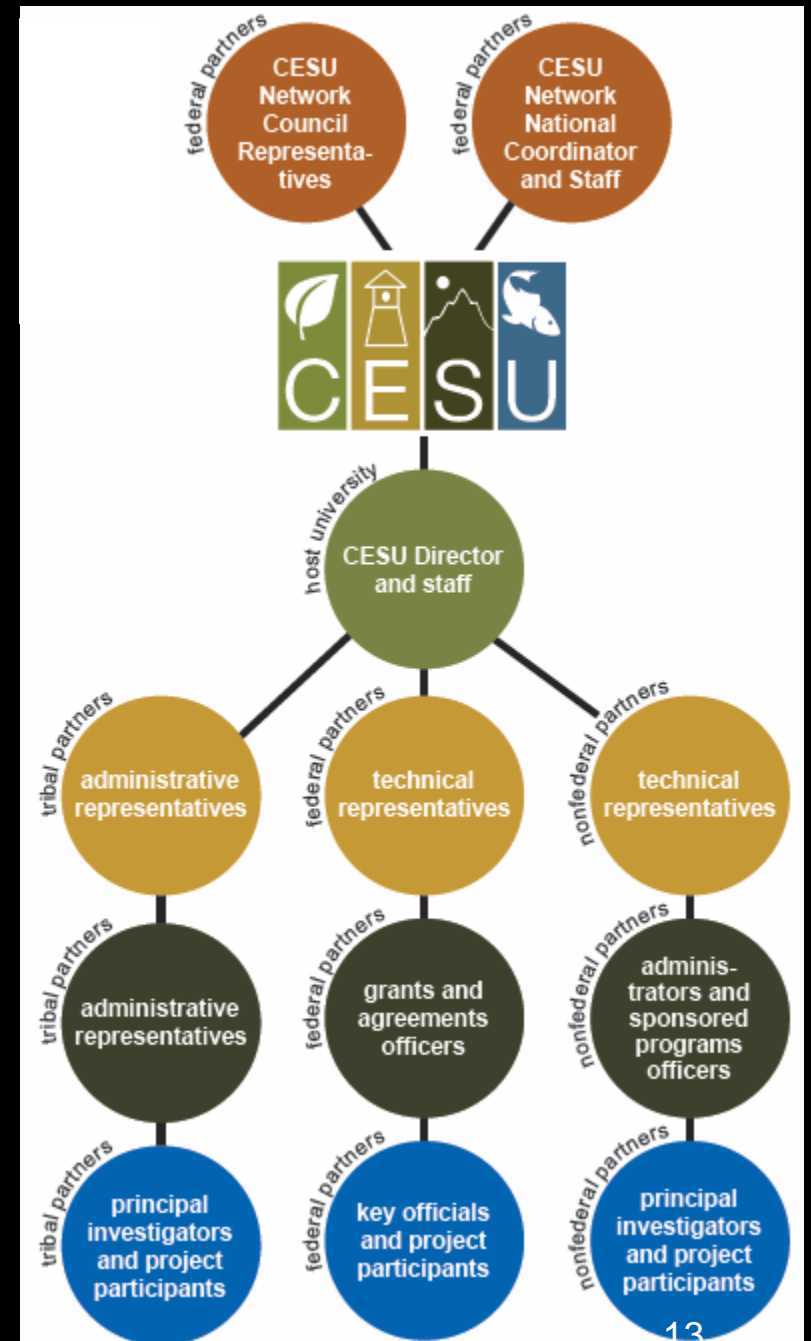
Communicate with the CESU Director, the CESU Network National Office, other partner institutions, and federal agencies about CESU activities

- provide information to the director as requested
- attend in person or teleconference meetings
- participate in strategic planning efforts
- review and vote upon potential non-federal partners

Promote, build awareness and generate support for the CESU program within the tribe or institution

- encourage students and tribal experts or faculty to participate in CESU activities
- forward CESU award opportunities to tribal experts or faculty
- work with tribal administrators or sponsored programs offices to get CESU agreement, amendment, and award signatures
- answer questions about the CESU from the tribal council, faculty, or sponsored programs offices

<http://www.cesu.psu.edu/materials/briefing.htm>



## Technical Representatives

- Forward funding announcements to your email lists.
- Read and share PNW CESU newsletter, *Cooperative Ventures*.
- Supply content for our newsletter (student activity within a project, project results, funding opportunities).
- Highlight PNW CESU in your organization's newsletter or website (contact [pnwcesu@uw.edu](mailto:pnwcesu@uw.edu) if you would like help creating content, or to connect contacts who handle newsletter/website).
- Link to PNW CESU on your website.
- Respond to doodle polls/attend meetings.
- Identify your organization's process and contacts for beginning a project.
- Share PNW CESU information at your faculty or administrative meetings.
- Host a Spring or Fall PNW CESU meeting.

# Strategic Plan: Goals and Objectives

1

## **Establish effective ongoing communication among all partners**

- develop and maintain web site
- publish PNW CESU newsletter
- convene annual meeting of PNW CESU partners

2

## **Demonstrate success in research, technical assistance & education**

- develop research, technical assistance and education projects that:
  - (a) provide well rounded participation across research, technical assistance and education arenas
  - (b) have robust levels of involvement by partners and agencies
  - (c) fulfill and enhance the collaborative ideal of the PNW CESU

3

## **Increase minority involvement**

- identify minority-institution partner strengths in the areas of research, technical assistance and education
- link minority institutions with PNW CESU agencies

# Strategic Plan: Goals and Objectives

4

## Match agency needs with partner expertise

- regularly post agency needs and partner expertise on the web site
- convene regular meetings of agency representatives to discuss training needs and ways of fulfilling these needs using the CESU structure
- on an ongoing basis, develop mechanisms and explore opportunities for multi-agency collaboration

5

## Establish an effective and efficient organization

- develop executive committee operating principles and guidelines for: (a) addition of new members to the PNW CESU  
(b) composition of the managers committee  
(c) expected level of agency/partner participation  
(d) responsibilities of member agencies and institutions
- meet yearly as an executive and managers committee
- post information to the web site regarding cooperative agreement financial and administrative procedures specific to each agency or institution



# Updates from Partners

# Pacific Northwest CESU

