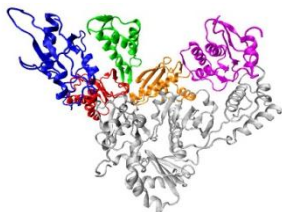
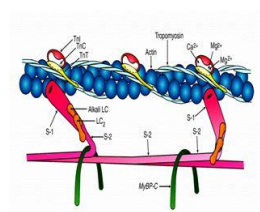


Case Western Reserve University

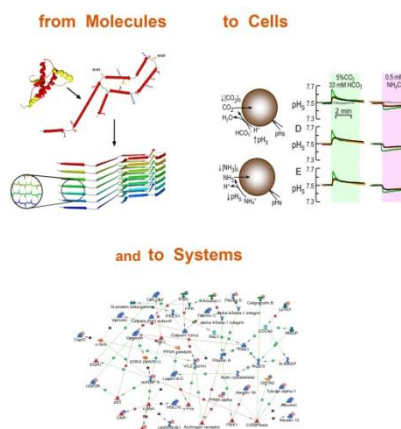
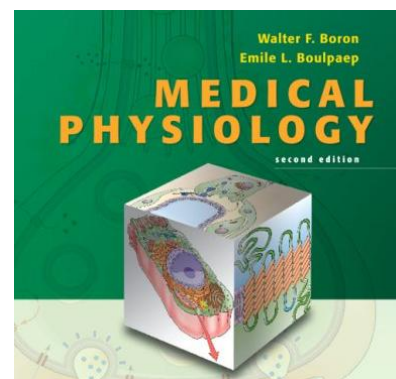


Department of Physiology and Biophysics Post-Baccalaureate Master's Program



The Master's Program in Medical Physiology:

- Designed for students with a bachelor's degree in a physical, chemical, or biological science who are seeking advanced training in the physiological sciences, typically in preparation for admission to a professional medical program (e.g. Medical School, Dental School) or a Ph.D. program.
- The program is flexible in duration. It can take as little as 1 year (2 semesters, 9 months) to complete the required 30 credit hours of course work for the MS. However, students who wish to decompress the program can take 14 months or more to complete the requirements.
- Core courses and flexible electives allow students to focus their work in key areas of medical physiology, including Anatomy, Histology, Biochemistry, or Pharmacology. Two, 6 hour courses in Medical Physiology, two, 2 hour courses in Translational Physiology (following the Medical Physiology textbook of Walter F. Boron - Chairman of our department - and Emile L. Boulpaep), two, 1 hour seminar courses, and one, 3 hour Independent Study in Physiology course make up the core of the required courses for this program.
- Graduates of the Medical Physiology Master's Program also can pursue careers in basic and clinical research, research administration, teaching or management in academia, the pharmaceutical and biotechnology industries, private research institutions, government science or regulatory agencies, or medicine and health care.
- Rolling admissions now through June of 2011 for the class beginning in August 2011. Admissions to the program will be through the established online application process for all graduate programs within the Department of Physiology and Biophysics (<https://www.applyweb.com/apply/cwru/menu.html>). Students will be required to submit their scores on either the MCAT or GRE exam and provide a statement of interest.



For more detailed information, contact our website (http://physiology.case.edu/edu_grad_master.php) or:
Dr. Thomas M. Nosek, Director of the graduate program (Thomas.Nosek@Case.edu)
Dr. Andrea Romani, Director Admissions (Andrea.Romani@case.edu)
Ms. Jean Davis, (jean.davis@case.edu, 216.368.2084)
Coordinator, Educational Programs
Department of Physiology and Biophysics
Case Western Reserve University
School of Medicine, Cleveland, Ohio 44106-4970