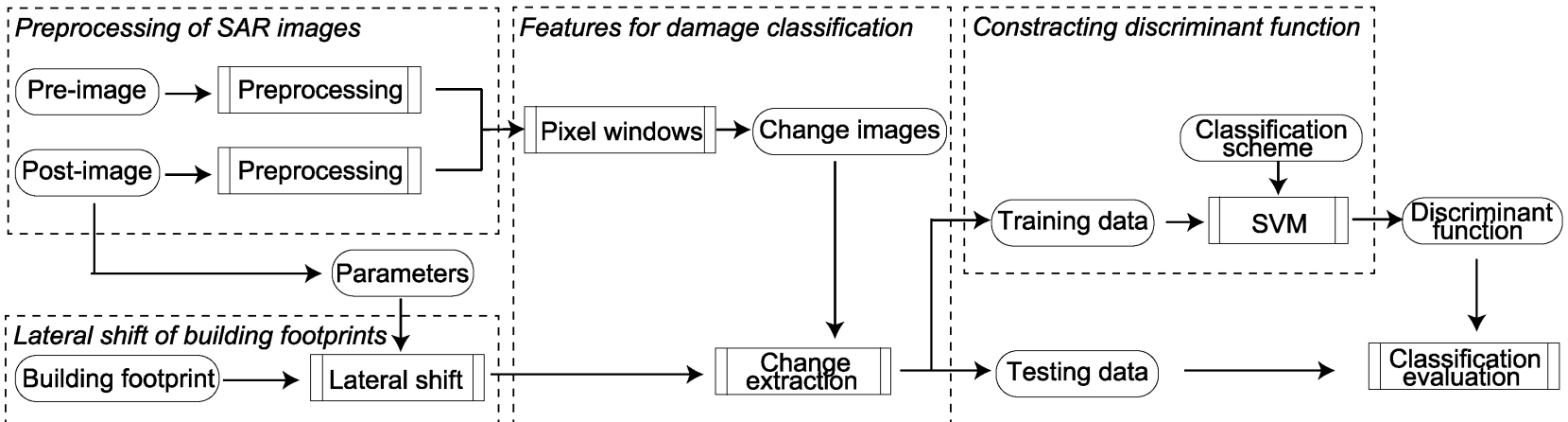
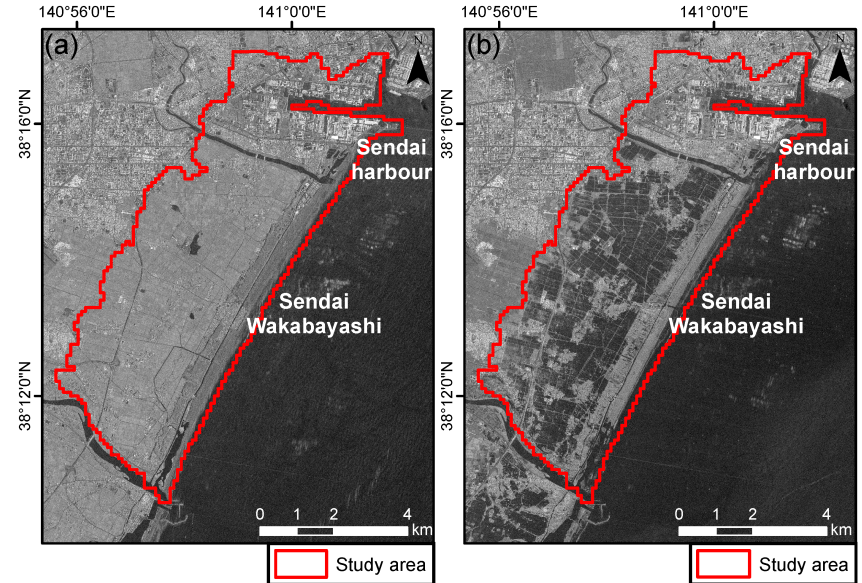


Yukio Endo

Master's student, Tohoku University

Research interests

- Synthetic aperture radar
- Disaster damage assessment
- Image processing
- Machine learning



Endo, Y., et al. "New Insights into Multiclass Damage Classification of Tsunami-Induced Building Damage from SAR Images." *Remote Sensing* 10.12 (2018): 2059.