

**Bre MacInnes**  
Central Washington University

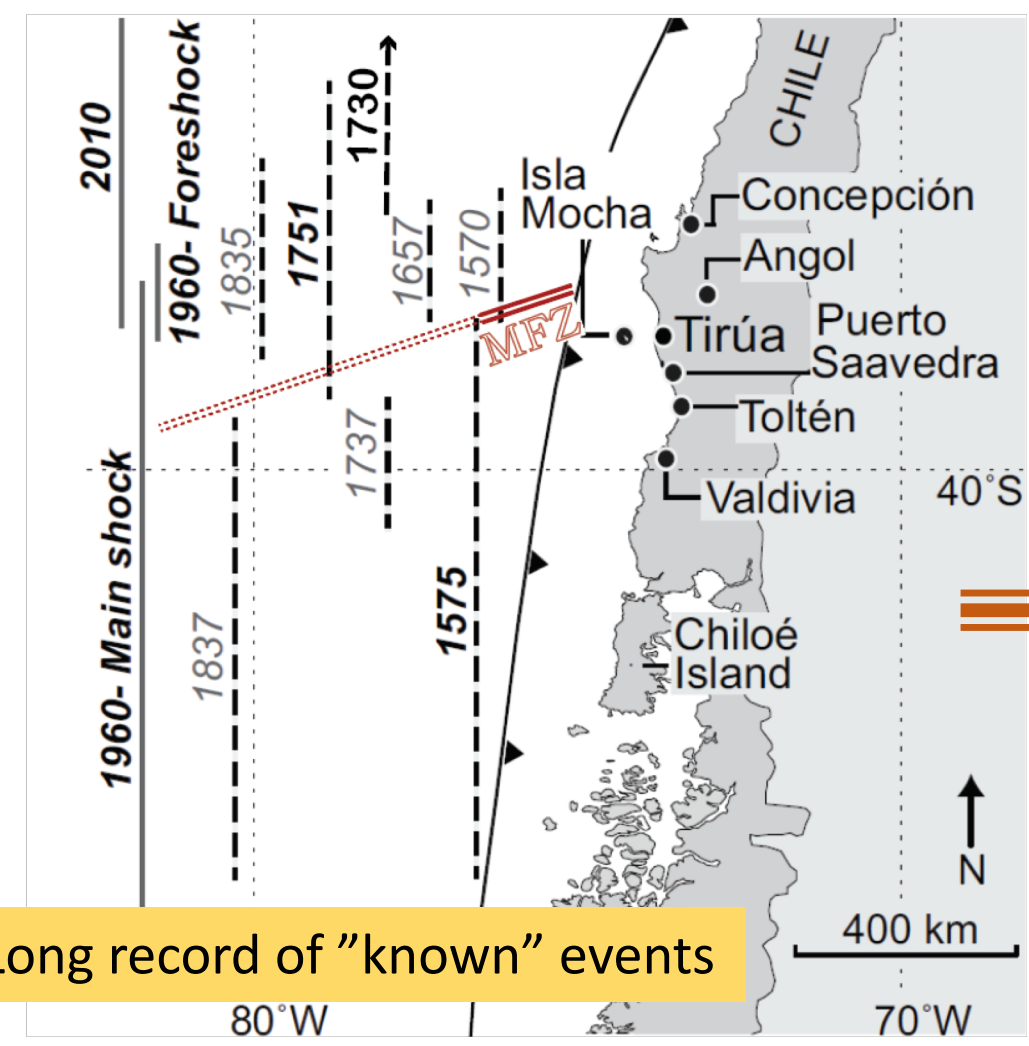
Tsunami modeling  
Tsunami field observations

- ... and linking these two topics to learn about:
- past earthquake rupture parameters
  - subduction-zone dynamics
  - tsunami behavior

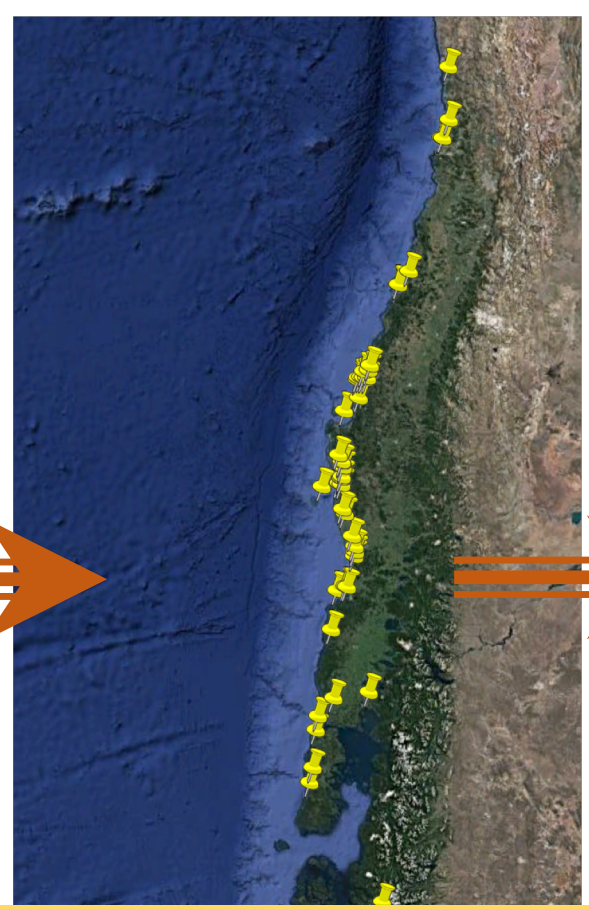
Currently doing work in:  
Chile  
Puget Sound

Previously worked in:  
Kamchatka  
Kuril Islands  
Aleutian Islands

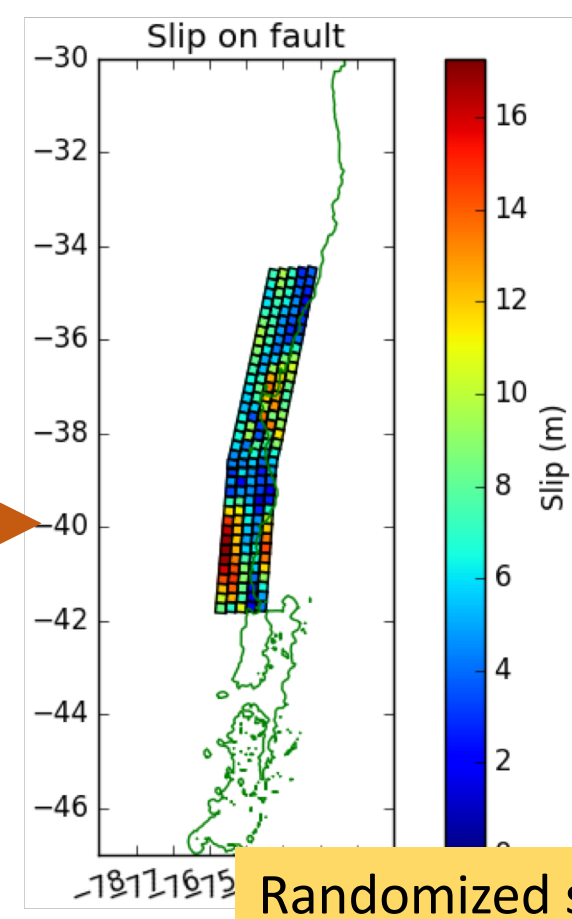
*For example in Chile*



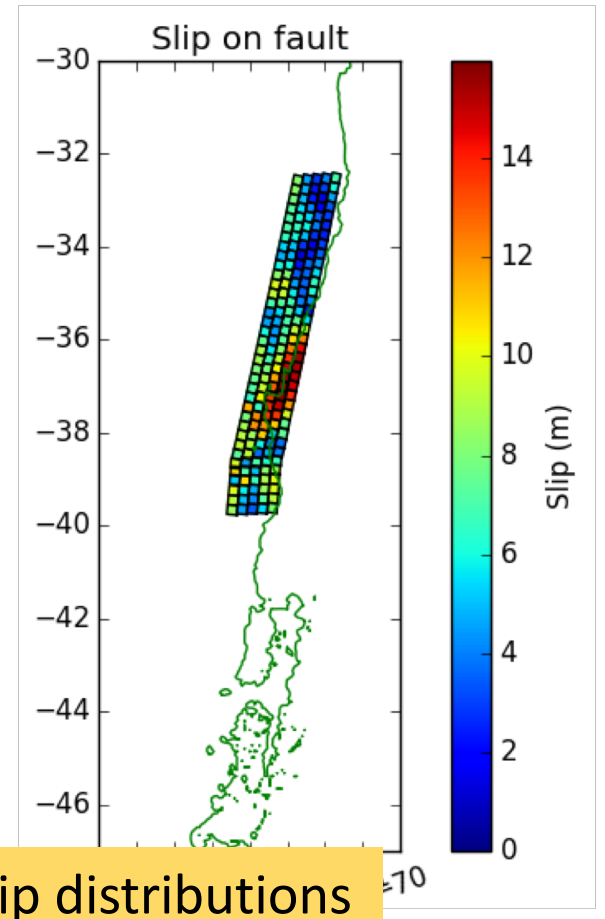
Long record of "known" events



Geologic and written records



Randomized slip distributions



Randomized slip distributions