

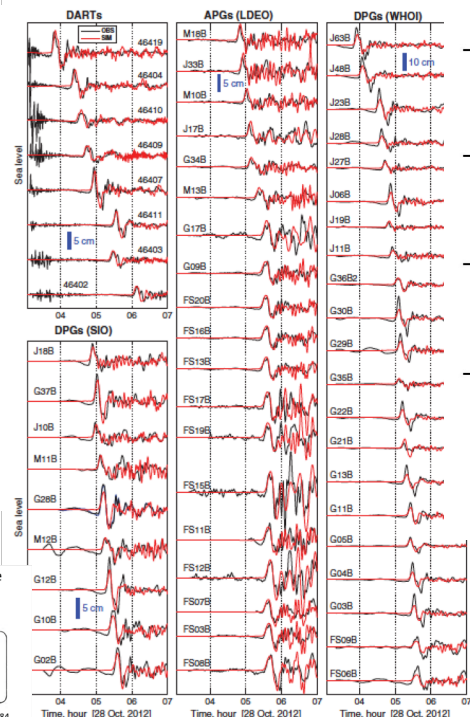
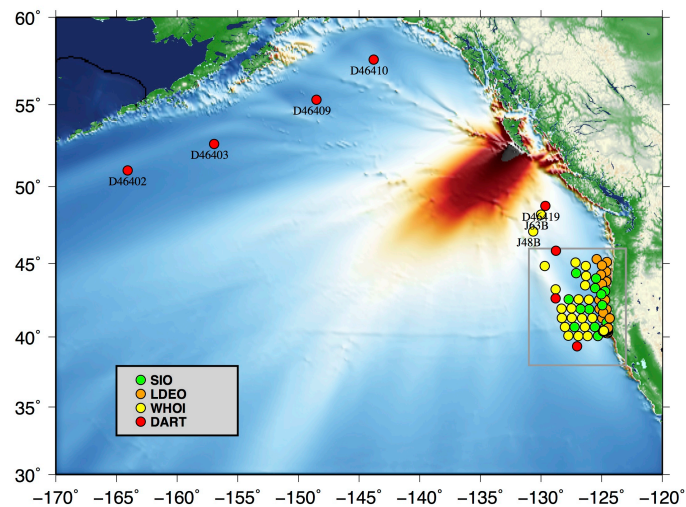


Anne Sheehan
 University of Colorado Boulder, USA
 CIRES and Department of Geological Sciences
 Anne.Sheehan@Colorado.edu



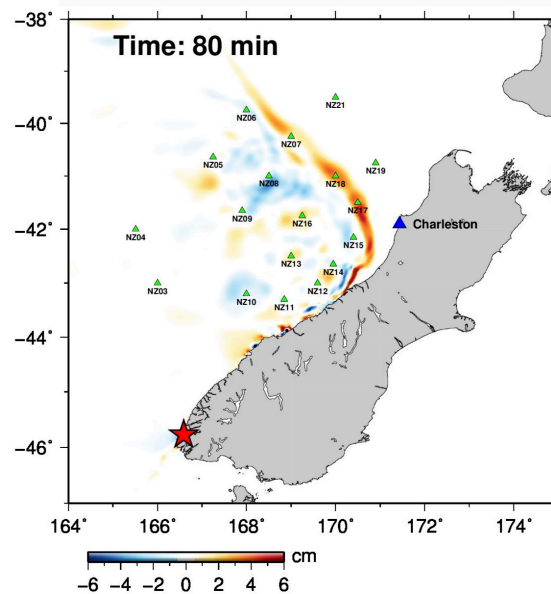
New types of data for tsunami data assimilation

Use of pressure gauge data from ocean bottom seismic experiments for tsunami studies

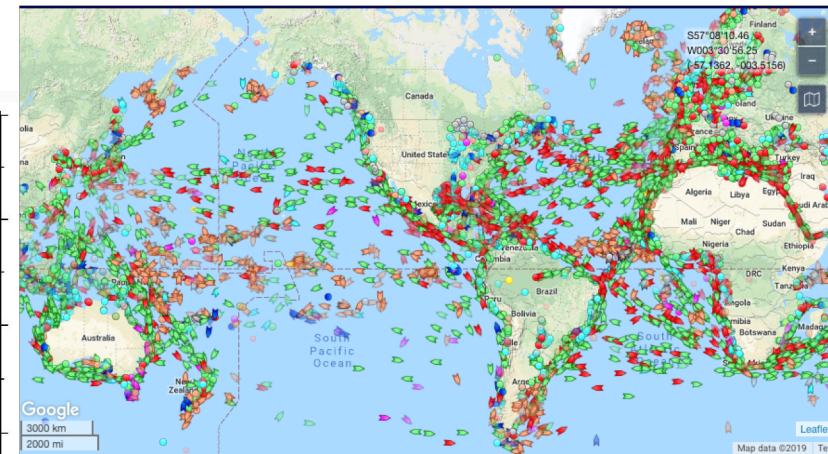


Sheehan et al., SRL, 2015

Tsunami Data assimilation



Maeda et al., GRL, 2015
 Gusman et al., GRL, 2016
 Mulia et al., JGR, 2017
 Sheehan et al., JGR, 2019
 Wang et al., GRL, 2019



Improving tsunami warning using commercial ships

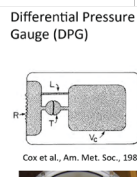
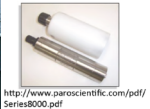
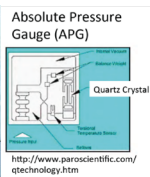
James H. Foster,¹ Benjamin A. Brooks,¹ Dailin Wang,² Glenn S. Carter,¹ and Mark A. Merrifield¹

Received 16 February 2012; revised 29 March 2012;

RESEARCH LETTER Open Access

Assessment of GNSS-based height data of multiple ships for measuring and forecasting great tsunamis

Daisuke Inazu¹, Takuji Waseda^{1,2}, Toshiyuki Hibiya^{1,3} and Yusaku Ohta⁴



M9 Project Definition Workshop, UW, March 13-14, 2019

