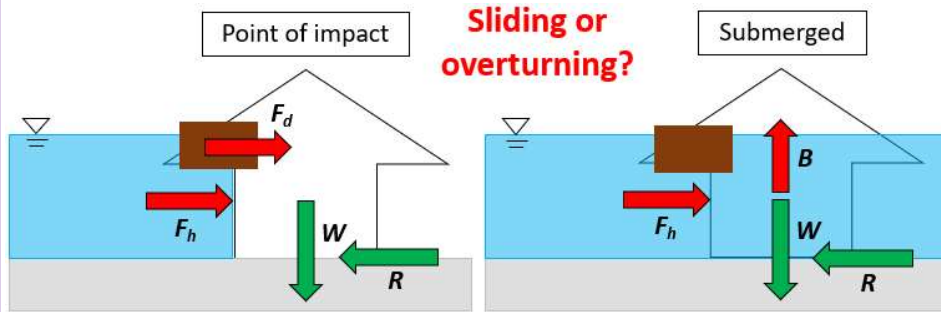
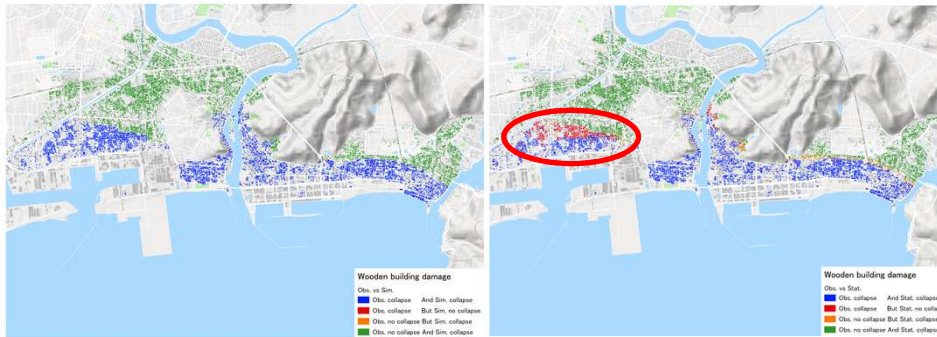


Building damage assessment

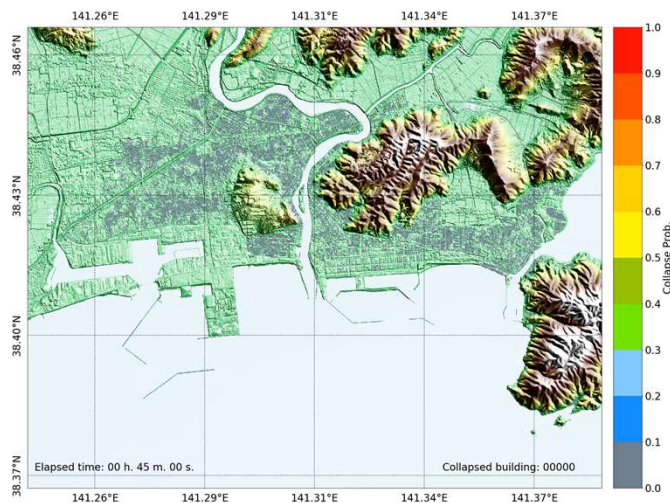


Obs. vs Analytical method

Obs. vs Fragility functions



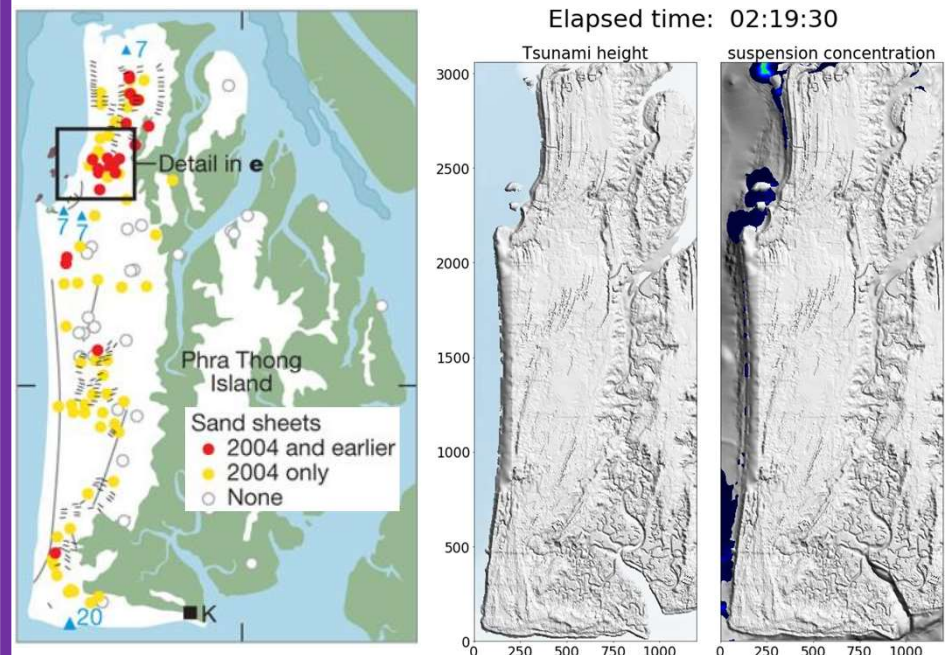
Visualization of the results



Anawat Suppasri,
IRIDeS, Tohoku University

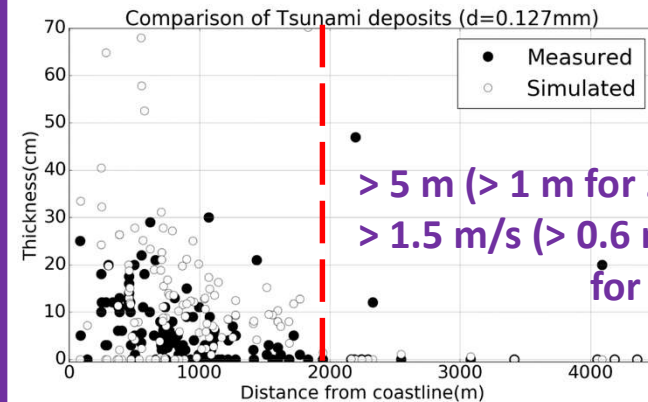


Sediment transport modeling



2004 tsunami deposits

Max. water level
Suspended sediment concentration



> 5 m (> 1 m for 2011 tsunami)
> 1.5 m/s (> 0.6 m/s for 2011 tsunami)