

# Yuya Yamaguchi

Research associates

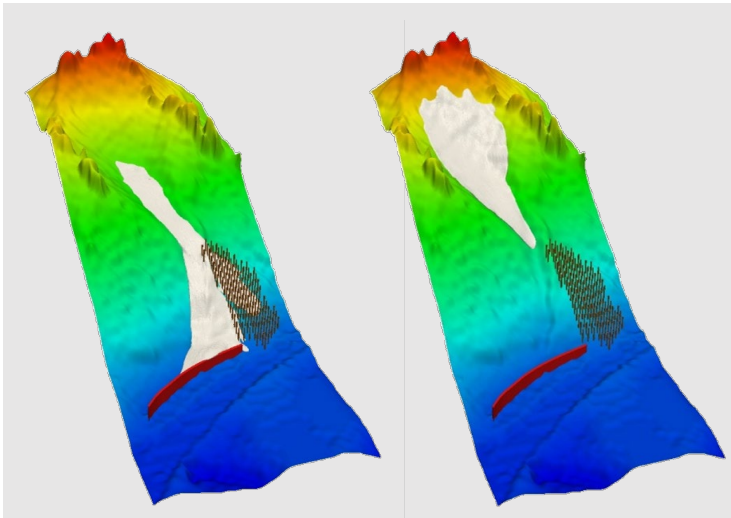
IRIDeS, Tohoku University

yyamaguchi@irides.tohoku.ac.jp

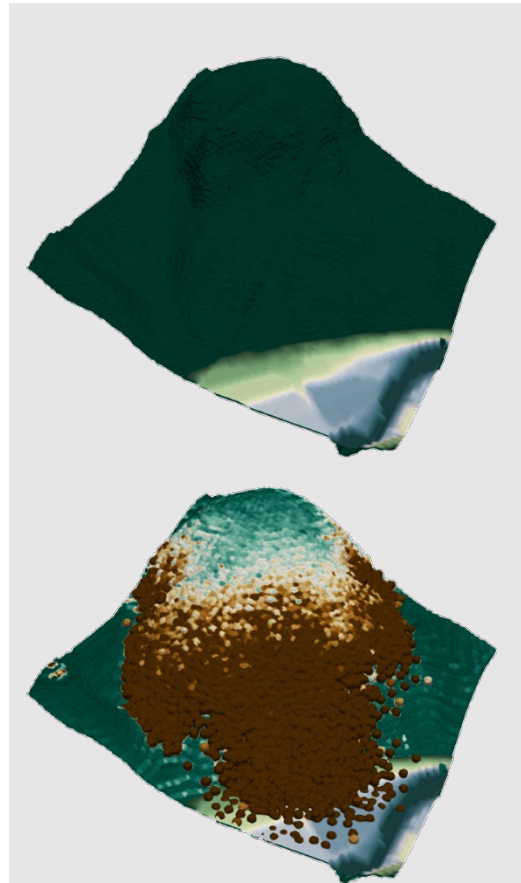


## Research interests

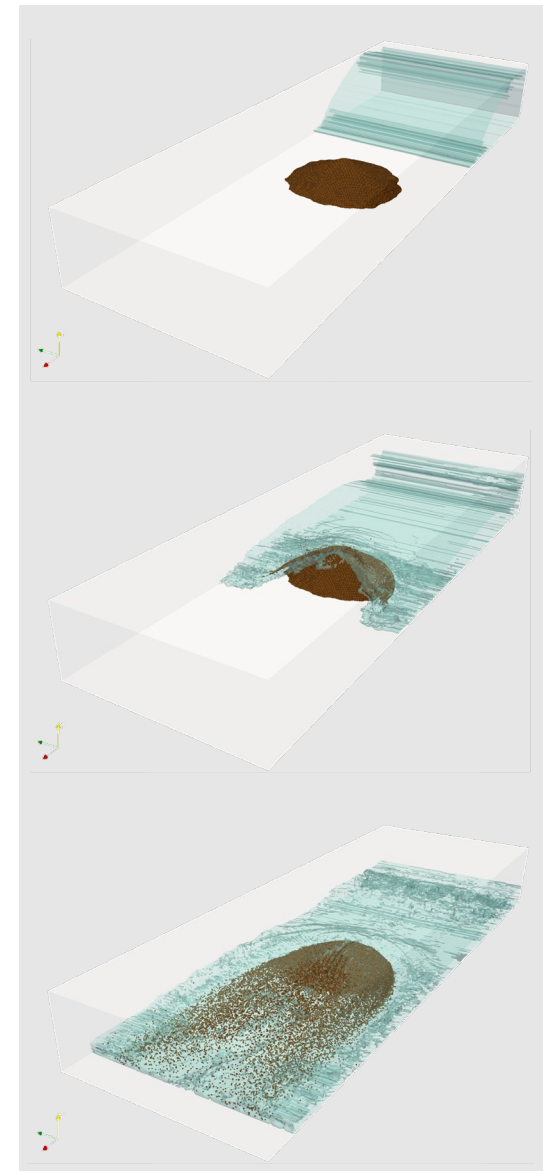
- Simulation of sediment disaster using solid-liquid coupled material point method
- Simulation of snow avalanche using stabilized finite element method



Snow avalanche simulation using FEM



Landslide simulation using material point method



Model experiment of wave collision to sandpile