

Evacuation Route and Evacuation Assembly Area

CHDD 1st Floor:

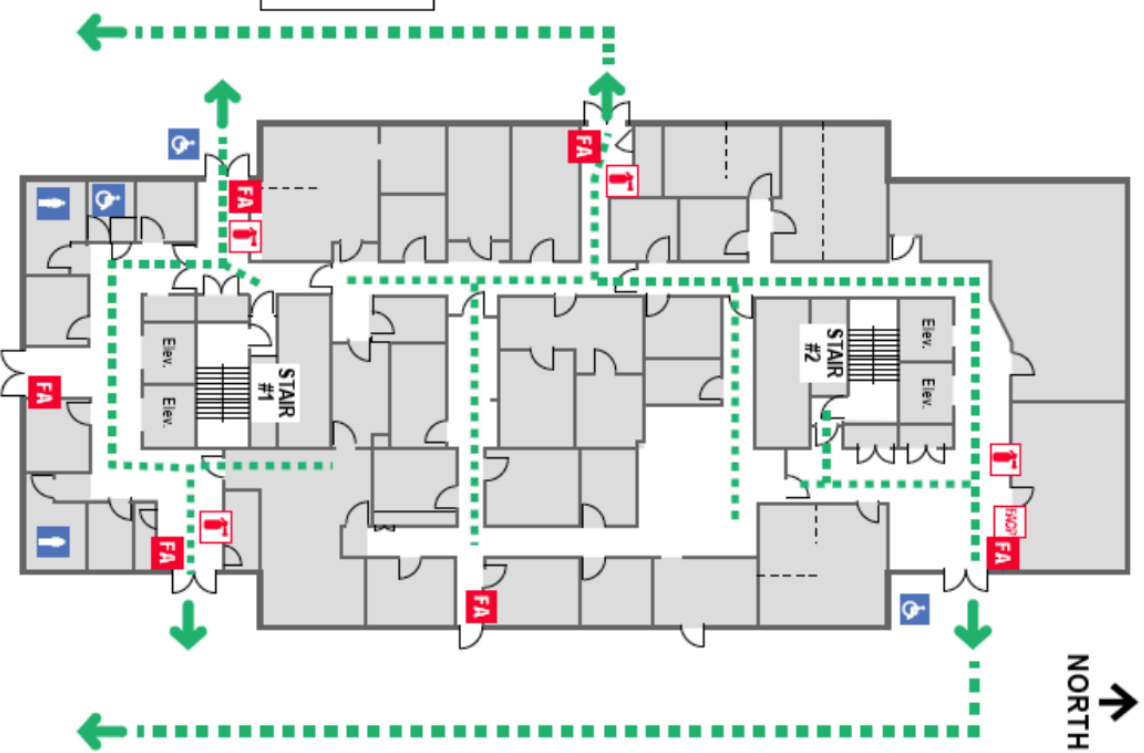
KEY:


-  Evacuation Route
-  Exit
-  Restroom
-  Fire Extinguisher
-  Fire Alarm
-  Fire Alarm Control Panel
-  Symbol of Accessibility

IF THERE IS AN EMERGENCY:

- Sound fire alarm.
 - Assist persons with disabilities.
 - Exit the building using the nearest exit.
- DO NOT USE ELEVATORS!**
- Report to the nearest designated outside assembly area.
 - Do not re-enter until authorized to do so.

Evacuation Assembly Point:
South Building Lawn



 Fire Alarm Control Panel is located in Switchgear Room #CD11A on Basement Level