



The Shared Decision Making/ Patient Decision Aids Demonstration Project at Virginia Mason Medical Center

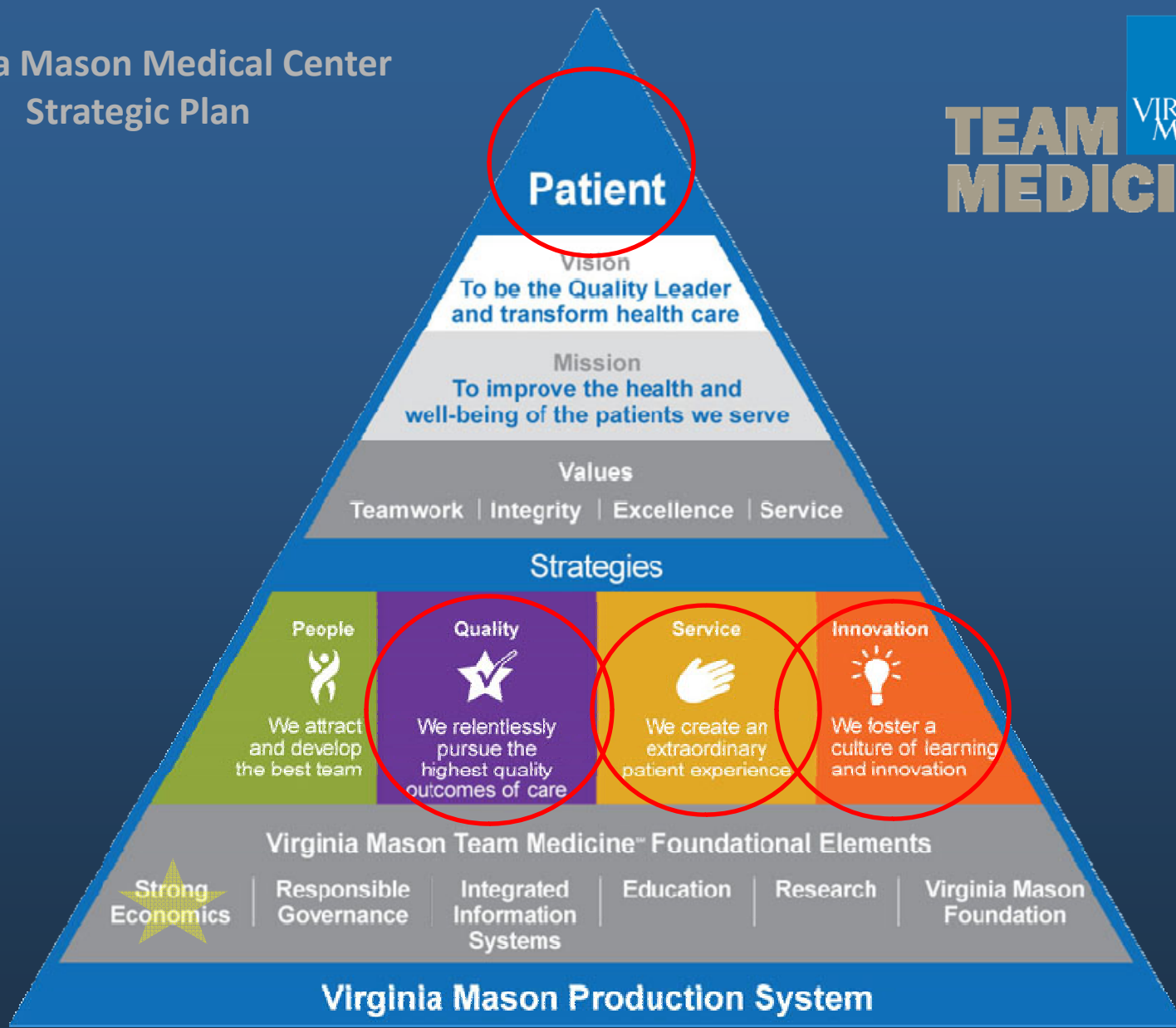
Implementing Shared Decision Making: Lessons from the Front
May 26, 2011
Carly Searles, ARNP

Virginia Mason Medical Center

- Integrated health care system
- 501(c)3 not-for-profit
- 336-bed hospital
- Nine locations
- 450 physicians
- 5,000 employees
- Graduate Medical Education
- Research Institute
- Foundation



Virginia Mason Medical Center Strategic Plan

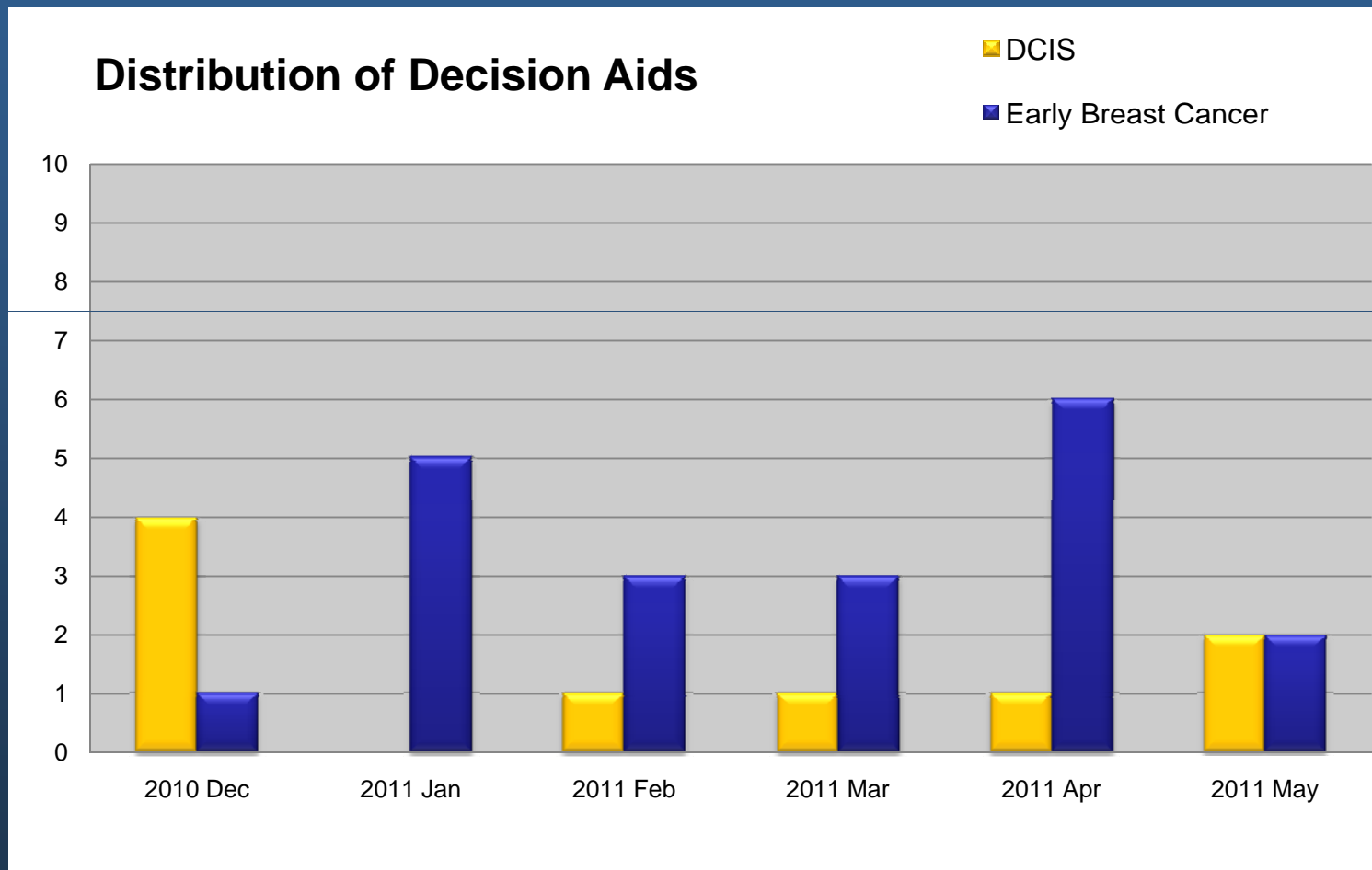


We received IRB approval for the project in December, 2010

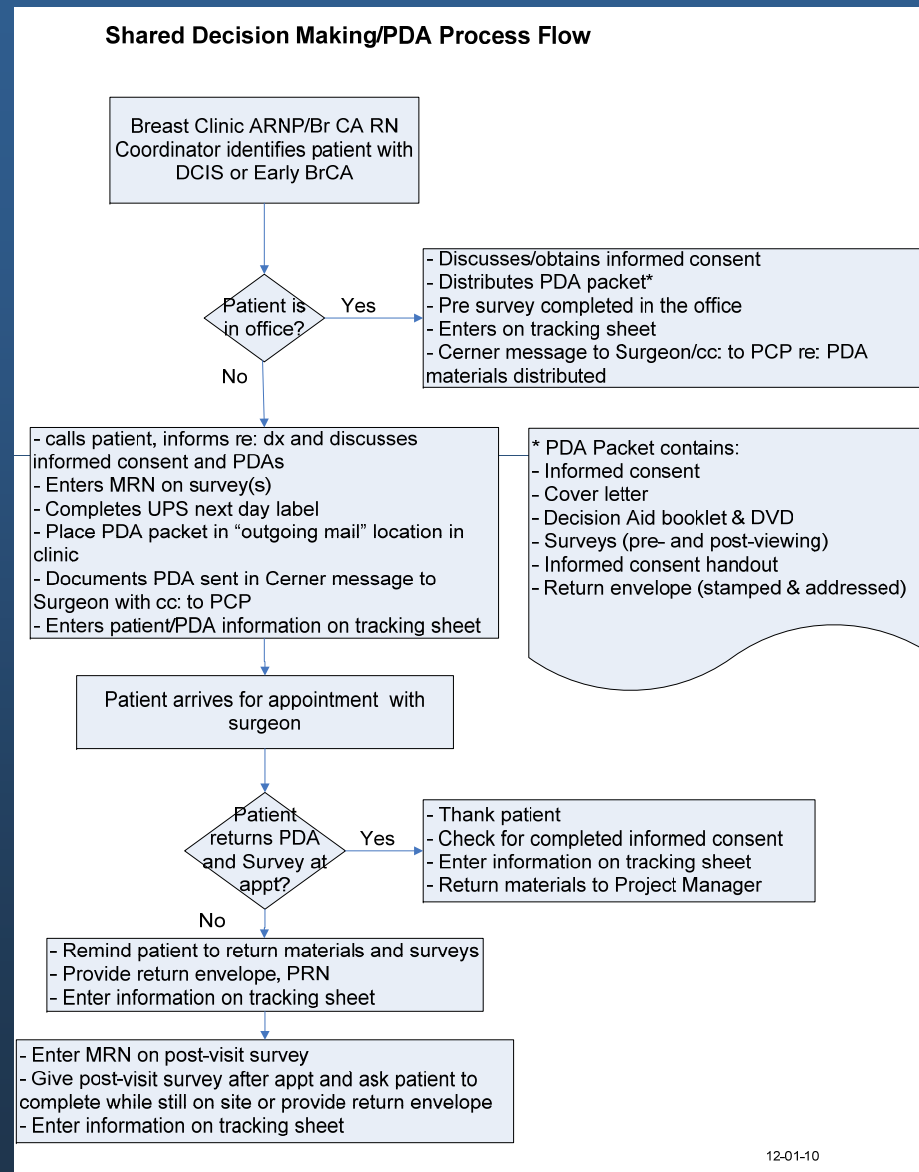
- Conditions selected for SDM/PDA:
 - Ductal carcinoma in situ
 - Early breast cancer
- We have an enthusiastic and committed team:
 - Carly Searles, ARNP, Rita Kelly, RN, Debra Wechter, MD, Sherry Stoll, RN, Carolyn Cone



We have distributed ~30 PDAs to women and their families since that time



We created process flow tools to guide our work



We've heard positive feedback from our patients



“This week I was diagnosed with DCIS cancer. I volunteered to be a part of the study that views a DVD that gives treatment options before you see the doctors involved. ...I want you to know that the video was very helpful to me.”



We're continuing to learn about what works for our patients and for our organization

- Some patients are overwhelmed by the amount of information provided
- Some patients are surprised to learn there are treatment options
- Shared decision-making conversations
 - need to be personalized for each patient
 - seem to make patients less anxious
- Some providers express concern that the decision aids are not reflective of their current practice



We plan to expand our efforts in 2011 and beyond

- Additional topics under consideration:
 - Hip and knee osteoarthritis (Orthopedics service line)
 - Prostate cancer screening (Primary Care service line)
- VMMC is implementing EMMI Solutions content system-wide
- We are delighted that FIMDM has negotiated for an extension of its agreement with Health Dialog for demonstration project participants



We've appreciated the help and support of FIMDM and the UW research team

- Doug Conrad, PhD
- Anne Doherty Renz, MPH
- Carolyn Watts, PhD

