

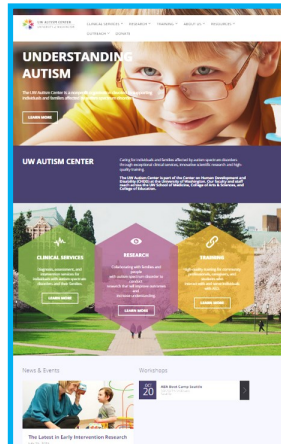


News & Notes

Center Updates

Visit us at our New Website!

We are thrilled to have launched our [new website](#)! We hope you enjoy the updates and that you have a chance to check out [resources](#), connect with [UWAC Autism Stories](#) and find out more [about us](#) soon!



UWAC- Tacoma Clinic Expands!



The UWAC-Tacoma has re-opened our clinic in the McDonald Smith Building (MDS) on the UW Tacoma campus. In combination with our

Cherry Parkes office, UWAC-Tacoma has doubled in size and doubled our capacity to serve the South Sound. We look forward to seeing you soon at the Tacoma clinic!

Research Updates



New Baby Siblings Research Findings

UWAC Director, Annette Estes Ph.D., has had research highlighted in [Spectrum](#) and in [ParentMap](#) this month. The study titled, [Behavioral, cognitive, and adaptive development in infants with autism spectrum disorder in the first 2 years of life](#) was published this July in the [Journal of Neurodevelopmental Disorders](#). By observing infants whose older siblings have autism, this study moves the field forward in measuring risk and tracking early development in infants with a high familial risk for ASD. Thank you to the families whose participation in the study. You have made such an impact!

Outreach Updates

Puget Sound Autism Speaks Walk & Resource Fair

We had a great time at the [event](#) last month! Thanks to all who stopped by!



Save the date: October 16th!

2015 Autism Conference

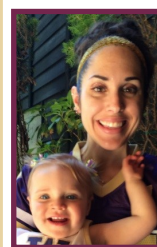


On **Friday October 16th** Gary Stobbe M.D. of Seattle Children's Autism Center and our Tacoma clinic Director, [Patricia Matestic PhD](#), will be speaking at the [5th Annual Lewis County Autism Conference](#) on *Transitions: Pathways from Infancy to Adulthood* in Chehalis! Please [register](#) by **October 9th**, early registration encouraged as the conference size is limited! We hope to see you there!

Clinic Updates

New Appointments

A warm to welcome Sara Woods PhD, our newest clinical psychologist at the UWAC-Tacoma clinic! Sara received her PhD at the University of Windsor in Ontario, Canada. With a strong lifespan approach Sara provides comprehensive diagnostic evaluations to people of all ages, as well as individual therapy, consultation, and education. Sara is passionate about helping children and families to improve their lives by equipping them with knowledge and skills while helping them to discover the strengths that they already have.



We are happy to welcome Hayley Waltz, MS, BCBA, to the Behavior and Education Consultation Team! Hayley is a Seattle native who's been working with children with ASD for the last 13 years. She has experience working with individuals from young toddlerhood to early adulthood. Her expertise with adolescents and young adults with ASD, curriculum development, and school consulting and support will help us serve our families even better.