

Partnership Bulletin



Stay in
the Circle...

UNIVERSITY OF WASHINGTON PARTNERSHIP FOR NATIVE HEALTH

Issue 3, Fall 2010

Welcome Lannesse!

Boozhoo, Hello. My name is Lannesse Baker. I am a member of the Turtle Mountain Band of Chippewa from North Dakota but I also have family from the Fond du Lac Band of Lake Superior Chippewa in Minnesota. I was raised at and have connections to both communities. I moved to Seattle to join the Partnerships for Native Health team as a research coordinator for a project with Tribal Colleges and Universities (TCUs) in Washington, Montana, and North Dakota. Prior to moving, I lived in Minneapolis for 6 years where I coordinated community based participatory research and empowerment evaluation projects with both urban and reservation Native communities in Minnesota. I love the work I do for many reasons but most importantly because it brings Native people and communities into the research process. I am interested in how partnerships with and participation of Native people in the research process can help us move beyond documenting the problems about Native communities to also describing our many successes and strengths which can help with the development of meaningful and relevant solutions to challenges.

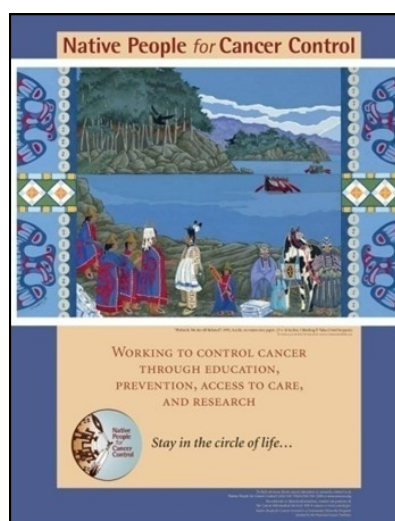
When I am not working I love spending time with family and friends. I am a jingle dress dancer and enjoy powwows too. I travel every chance I get.

Native People for Cancer Control I

Native People for Cancer Control I (NPCC), a National Cancer Institute funded Community Networks Program Center, recently ended its first five years of funding. Below is a snapshot of accomplishments from May 2005 through April 2010:

- ⇒ Leveraged grants: **\$20,456,362**
- ⇒ Native Art for Cancer posters distributed: **31,000**
- ⇒ Digital stories created: **92**
- ⇒ NPCC-affiliated staff and colleagues journal articles: **95**
- ⇒ Community grants funded: 22 totaling over **\$35,000**
- ⇒ Trained and mentored students: **7 undergraduates, 14 graduates, and 8 postgraduates and junior faculty**

On the following page, we've highlighted our plans for the next 5 years.



Inside this Issue

New Staff	1
NPCC I	1
NPCC II	2
NPCC STAFF	2
CLINICAL TRIALS	3
SPIRIT OF EAGLES	3
WEBQUIT	4
COLORECTAL AID	4
CONTACT INFO	4

SEND CONTACT
INFORMATION, ARTICLES,
QUESTIONS AND IDEAS TO
NPCCINFO@UW.EDU

University of
Washington
Partnerships for
Native Health
1730 Minor Avenue,
Suite 1760
Seattle, WA 98101
npccinfo@uw.edu
206.543.3830 - fax

NATIVE PEOPLE FOR CANCER CONTROL II

In September 2010, Native People for Cancer Control (NPCC) was selected as one of 23 sites nationally to be a National Cancer Institute funded Community Network Program Center! Drs. Dedra Buchwald and Jeffrey Henderson are the Co-Principal Investigators of NPCC. On November 4th, 2010, NPCC held a kick-off meeting with community research partners. Our aims for the next five years are to:

1. Increase cancer education, outreach, health promotion, and cancer prevention activities among urban and rural American Indian/Alaska Native (AI/AN).
2. Conduct community-based participatory research that focuses on colorectal cancer screening, health literacy and health communication, and cancer risk factors.
3. Train at least 4 AI/AN faculty-level investigators, as well as students, to conduct research.
4. Reduce cancer-related health disparities by increasing access to, and use of, interventions among AI/AN.

Over the next year, our **Community Outreach Program**, led by Laura Revels, will focus on the following:

- ⇒ Implement and evaluate Understanding Cancer and digital storytelling workshops throughout our 8-state region;

- ⇒ Conduct a thorough cancer education and outreach needs assessment;
- ⇒ Create a long-term, sustainable community health education and outreach plan, *based on our partners' stated and documented needs*;
- ⇒ Develop a brief, evidence-based educational intervention that addresses a cancer-related problem identified by the needs assessment;
- ⇒ Start the first round of our annual **Community Grants Program**.

The NPCC **Research Program**, led by Dr. Jeffrey Henderson and Shelley Lawson, consists of a main research project, "Innovations in Colorectal Cancer Screening", and two pilot projects, "Native Comic Book Project", and "Enhancing Comprehension of Written Informed Consent". NPCC is partnering with and staff at Oglala Sioux Tribe, Fort Peck, South Central Foundation and the Arctic Slope Native Association on the colorectal cancer research project.

The NPCC **Training Program** aims to increase the number of AI/AN individuals who conduct community-based research pertinent to cancer disparities. Our current Native Investigator is Dr. Emily Haozous.

NATIVE PEOPLE FOR CANCER CONTROL SEATTLE STAFF



Laura Revels
Community
Outreach
Manager



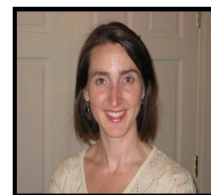
Dedra Buchwald
Co-Principal
Investigator



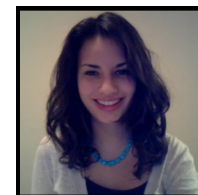
Shelley Lawson
Research
Program
Manager



Steve Charles
Research/
Outreach
Coordinator



Carrie Nass
Administration
Core Manager



Corinna
Tordillos
Student
Assistant

Over the next month, we will be adding to our NPCC team! We will be hiring field staff to work at Black Hills Center for American Indian Health (in Rapid City, SD), at the Oglala Sioux Tribe, and at Fort Peck Tribes.

ONLINE CLINICAL TRIALS EDUCATION WEBSITE AND UNDERSTANDING CANCER TRAININGS NOW AVAILABLE!

Our Online Clinical Trials Education website is now up and running for the public! This self-paced multi-media learning tool will help you understand what cancer clinical trials are, why they are important, and how they work. You will also find resources on how to find clinical trials in your area. Native People for Cancer Control designed this website in partnership with staff at the NCI's Cancer Information Service (based at Fred Hutchinson Cancer Research Center), Tacoma-Pierce County Health Department and many dedicated volunteers. To access the Website, go to www.nativepcc.org/ct/

NPCC is pleased to be partnering with Dr. Melany Cueva and the Alaska Native Health Consortium, to help disseminated their "Path to Understanding Cancer" curriculum. Understanding Cancer workshops are fun, interactive training sessions, that can be tailored for community needs.

If you are interested in having an in-person cancer clinical trials or Understanding Cancer training at your site, please contact Carrie Nass at cnass@u.washington.edu

SPIRIT OF E.A.G.L.E.S. CONFERENCE

The 8th Annual National Changing Patterns of Cancer in Native Communities: Strength Through Tradition and Science was held in Seattle at the Westin Hotel, September 11-14, 2010. The conference is hosted biannually by Mayo School of Continuous Professional Development and their Spirit of E.A.G.L.E.S. program which is funded by the National Cancer Institutes Community Networks Program.

The first day of the conference was a student track and began with a student luncheon followed by a very active Kick Cancers Carcass field hockey tournament at Discovery Park. On Sunday and Monday participants were pleased to have a Native Marketplace to view Native artwork where 20 artists exhibited their work. The Marketplace included a poster session in the evening.

Opening ceremonies on Sunday were performed by the Honorable Cecile Hansen, Chairwoman of the Duwamish Tribe. Keynote lunch speaker Dr. Arnie Vaino gave a moving talk about how cancer survivors are our teachers on everything about cancer

Sessions continued on Monday morning with break out sessions throughout the afternoon. The Awards banquet that evening featured Red Eagle Soaring, the northwest's only Native youth performing arts group. They performed excerpts from their thematic play "Tobacco Leaves" that deals with issues about tobacco use. On Tuesday, Dr. Judith Kaur invited Glen Pinkham to do closing prayer and adjourn. The conference overall was a success with 250 participants from all over the country.



*Native medical students attended the Spirit of EAGLES conference.
Photo courtesy of Jack Storms Photography, Seattle, WA.*



Native medical students field hockey game "Fighting for Cancer" at Discovery Park. Photo courtesy of Jack Storms Photography, Seattle, WA.

WEBQUIT STUDY

The WebQuit Study is being conducted by Seattle's Fred Hutchinson Cancer Research Center.

The WebQuit Study is currently looking for volunteer adults who would like to quit smoking. In this study, participants have a 50% chance of being assigned to one of two web-based programs for quitting smoking. The study will also involve several short surveys at the start of the study, and again three and six months later. Both programs are free. Participants will not be paid. The goal of this study is to learn which website is the most useful for people who want to quit smoking. Feel free to email study@webquit.org if you have any questions

COLORECTAL FINANCIAL AID FUND

The Patient Advocate Foundation (PAF) is a national non-profit resolving patient access to health care issues, medical financial limitations, insurance denials and multiple government program enrollments, including Medicaid and Social Security Disability Income. PAF announced that they have launched a new Colorectal Financial Aid Fund (FAF) as of September 28, 2010. The new program is designed to assist the growing numbers of colorectal cancer patients contacting PAF for access to care support, debt relief and financial assistance.

The Colorectal Financial Assistance Fund will provide one time grants of \$400.00 to financially-eligible colorectal cancer patients who have unmet transportation expenses, including gas, parking, toll and public transportation costs associated with their medical care. FAF plans to serve approximately 1,200 colorectal cancer patients annually regardless of insurance status or site of care.

Patients and caregivers can access the Financial Assistance Fund at 1-866-657-8634.

PARTNERSHIPS FOR NATIVE HEALTH CONTACT LIST

Abigail Echo-Hawk (Pawnee) <i>Tribal Liaison</i> <i>Community Outreach and Research Translation</i> hawkd3@u.washington.edu	Diane Korngiebel <i>Project Lead</i> <i>Institute of Translational Health Sciences, Community Outreach</i> dianemk@u.washington.edu	Shelley Lawson (Tsimshian) <i>Research Program Manager</i> salawson@u.washington.edu
Andrea Jones Krinke <i>Research Coordinator</i> <i>Strong Heart Stroke Study</i> ajj@u.washington.edu	Johnny Mao <i>Research Study Assistant</i> jmao@u.washington.edu	Steve Charles (Haida/Tlingit) <i>NPCC Outreach Coordinator</i> stevec3@u.washington.edu
Ardie Doorenbos <i>Project Lead American Indian and Alaska Native Cancer Survivor Support Groups</i> doorenb@u.washington.edu	Lannesse Baker (Turtle Mountain Band of Chippewa) <i>Research Coordinator</i> <i>Tribal Colleges and Universities Organ Donation</i> bakerl4@u.washington.edu	Steven Patrick Verney (Tsimshian) <i>Project Lead</i> <i>Strong Heart Stroke Study</i> sverney@unm.edu
Carrie Nass <i>NPCC Admin Manager</i> cnass@u.washington.edu	Laura Revels (Tlingit) <i>Community Outreach Manager</i> <i>Digital Storytelling Trainer</i> lreveals@u.washington.edu	Sweetwater Nannauck (Tsimshian/Haida/Tlingit) <i>Research Assistant</i> <i>Staying Connected</i> sweeth20@u.washington.edu
Corinna Tordillos (Tlingit/Assiniboine Sioux/Northern Cheyenne) <i>Student Assistant</i> ctordi@uw.edu	Odile Lallemand <i>Research Coordinator</i> ozl@u.washington.edu	Ursula Tsosie (Navajo) <i>Project Lead</i> <i>Staying Connected, Collaborative to Improve Native Cancer Outcomes</i> utsosie@u.washington.edu
Dedra Buchwald <i>Principal Investigator</i> <i>Director, Center for Clinical and Epidemiological Research</i> dedra@u.washington.edu	Ron Whitener (Squaxin Island) <i>Director</i> <i>Native American Law Center</i> ronw@u.washington.edu	