

Upcoming Attractions at the School of Drama

Our Country's Good
By Timberlake Wertenbaker
The Playhouse Theatre
December 4 - December 15

The Hour We Knew Nothing of Each Other
By Peter Handke
Meany Studio Theatre
January 29 - February 9

FROM THE DIRECTOR

A WOMAN'S FATE

Even as a King out hunting seized a glass,
something to drink from - any glass, no matter, -
and someone after that in a sure place
put the slight thing away, to guard it better:

thus destiny, which also has a thirst,
picked up this woman, drank of her till slaked,
and afterward some trivial fellow durst
not put her to her use, for fear she break,

and stuck her in that careful cupboard where
one cherishes all costly things and rare
(or things that people fancy have some worth).

And there she stood, as strange as something loaned,
slowly growing merely old and blind,
and was not prized and never rare on earth.

ACKNOWLEDGMENTS

Seattle Repertory Theatre, Intiman Theatre Company,
A Contemporary Theatre, Seattle Opera, Bob MacDougall

SCHOOL OF DRAMA

EXECUTIVE DIRECTOR
Sarah Nash Gates

FACULTY

Professors: Robert Dahlstrom, Barry Witham
Associate Professors: Robyn Hunt, Steve Pearson, William Forrester
Assistant Professors: Sarah Bryant-Bertail, M.L. Geiger,
Sara K. Schneider, Jack Wolcott

Senior Lecturers: Mark Jenkins, M. Burke Walker
Lecturers: Tom Burke, Shanga Parker, Judith Shahn, Deborah Trout

PART-TIME FACULTY

David Boushey, Bob Davidson, Scott Hafso, Catherine Madden,
Karen Omahen, Scott Weldin, Kim White

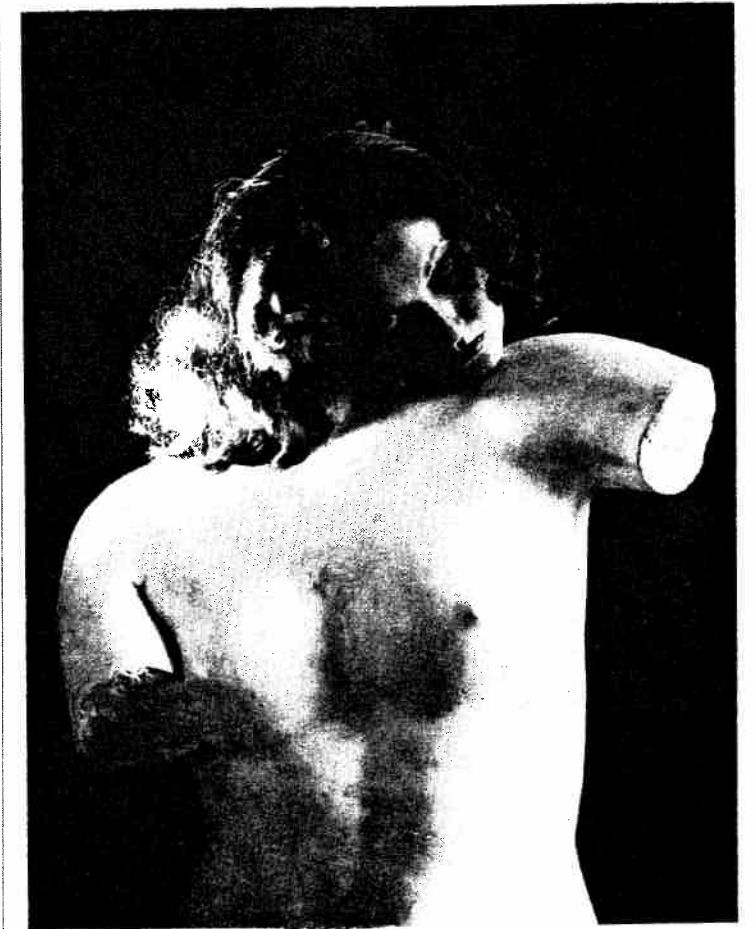
RETIRED, EMERITUS FACULTY AND FORMER PROGRAM HEADS
John Ashby Conway*, Jack Clay, Betty Comtois, James Crider,
Alanson B. Davis, Gregory Falls, Vanick Galstaun, Robert Gray,
Agnes Haaga, Donal (Dan) Harrington*, Robert Hobbs,
Paul Hostetler, Glenn Hughes*, Robert Loper, Warren Lounsbury*,
Michael Quinn*, Duncan Ross*, Geraldine Siks, Jack Sydown,
Aurora Valentinetti

STAFF

Bob Boehler, *stage technician*
Nacho Bravo, *master electrician*
Malcolm Brown, *stage technician*
Sue Bruns, *office assistant*
Alex Danilchik, *stage technician*
Josie Gardner, *costume shop manager*
Arlene Hamilton, *administrator*
Kris Bain, *mktg and pr manager*
Dorothy Kerst, *graduate programs*
Laurie L. Kurutz, *costumer*
Cecile Kummerer, *computer technician*
Anne Stewart, *production manager*
Joanne Tall, *secretary*
Rebecca Traber, *office assistant*
Meri Wada, *costumer*
Alan Weldin, *scene shop manager*
Thomas Zorich, *fiscal technician*

*Deceased

IPHIGENIA AND OTHER DAUGHTERS



BY ELLEN MCLAUGHLIN

UNIVERSITY OF
WASHINGTON
SCHOOL OF
DRAMA

The Penthouse Theatre
57th Season
412th Production
Nov. 20 - Dec. 1, 1996

CAST

IPHIGENIA	<i>Megan Hallin</i>
CLYTEMNESTRA	<i>Nicole M. Fazio</i>
ELECTRA	<i>Jessica Hagan</i>
CHRYSOTHEMIS	<i>Dana M. Hardy</i>
ORESTES	<i>Peter Dylan O'Connor</i>
CHORUS	<i>Elizabeth Grant</i> <i>Thea Lester</i> <i>Ada Limón</i> <i>Melissa Tanno</i> <i>Montana vonFliss</i>

Prologue

Act 1 - Iphigenia at Aulis

Act 2 - Electra

Act 3 - Iphigenia at Tauris

ABOUT THE PLAY

The Curse of the House of Atreus

Atreus (father of Agamemnon and Menelaus) fights with his brother Thyestes for the throne of Mycenae. When Thyestes debauches Atreus' wife, Atreus invites him to a banquet under the guise of reconciliation, and serves Thyestes the flesh of Thyestes' own children as food. Thyestes pronounces a curse on the House of Atreus. Years later Atreus' sons, Agamemnon and Menelaus are generals at the head of powerful Greek armies. Menelaus' wife, Helen, is abducted by Paris and taken to Troy.

The Greek forces unify and rise up to make war on Troy and recover Helen. But there is no wind and the ships lie silent in the bay. Calchas, the high priest, tells Agamemnon, commander of the fleet, he must sacrifice his daughter, Iphigenia, to the goddess Artemis to make the winds blow. Agamemnon rejects with horror the request, but pressured by his brother and the armies of Greece, he finally assents. He lures Iphigenia to the beach under the pretense of marrying her to Achilles, but Clytemnestra unexpectedly accompanies her.

Thus begins our story.....

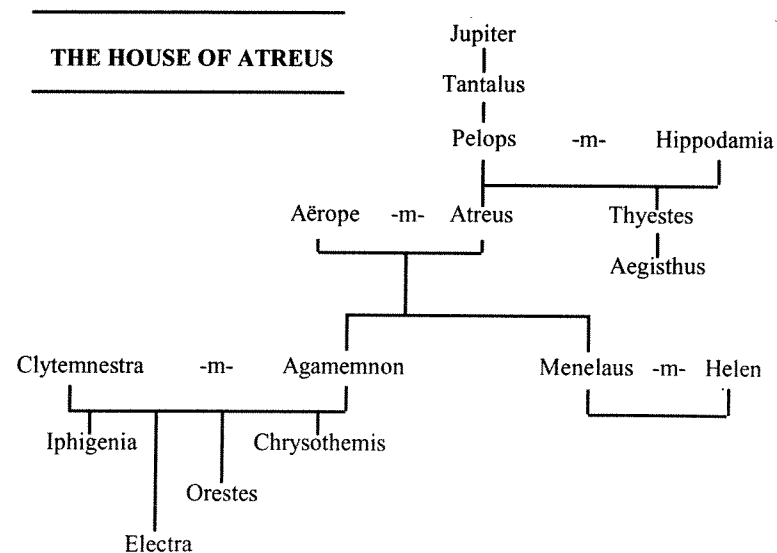
IPHIGENIA AND OTHER DAUGHTERS

BY ELLEN McLAUGHLIN

DIRECTED BY KERRY J. SKALSKY

Set Design	<i>Christopher L. Brown</i>
Costume Design	<i>John Kohan</i>
Lighting Design	<i>Evan M. Alexander</i>
Sound Design	<i>Bill Carswell</i>
Technical Coordinator	<i>Tlaloc A. Rivas</i>
Stage Manager	<i>B. Jennings Hart</i>

The play will be performed without
an intermission



PRODUCTION CREDITS

Assistant Stage Manager	<i>Holly Risan</i>
Electric's Crew	<i>Drama 212 Students</i>
Running Crew	<i>Kevin Crook, Nicole Darland, Shannon Egger, Mike Gilson, Adam Means, Adriana Muresan, Mike Nydegger, Brennan O'Reilly, Kit Schultze, Justin Zimmerman</i>
Production Office Staff	<i>Chuck Harper, Chazz Rose</i>
House Management	<i>Vanessa Elan, Wilmer Galindo, Noemi Rosaio, Kim Bateman</i>
Tickets	<i>UW Arts Ticket Office</i>
Community Advisor	<i>Leslie Swackhamer</i>
Faculty Advisors:	
Directing	<i>M. Burke Walker</i>
Design	<i>M. L. Geiger</i>
Technical	<i>Tom Burke</i>

ABOUT THE PLAYWRIGHT

Ellen McLaughlin is an actor and a playwright. She has been living in New York City where she played the Angel in the Broadway production of *Angels in America*. She was featured in Jon Jost's film *The Bed You Sleep In* and has acted in many regional theatres across the country. Her play *A Narrow Bed*, recipient of the Susan Smith Blackburn Award, was produced Off-Broadway. Other plays include *Infinity House* and *Days and Nights Within*. Her new play *Tongue of a Bird* will premiere at Seattle's Intiman Theatre in the 1997 season.

RECOMMENDED READING

Iphigenia - Agamemnon's Daughter

Maria Holanberg Lübeck, Almquist and Wiksell Int. c1993

Tragic Ways of Killing a Woman

Nicole Loraux, Harvard University Press c1987

Iphigenia at Aulis and Iphigenia in Tauris by Euripides

Translated by R. Lattimore, University of Chicago Press c1992

Electra by Sophocles

Translated by R. Lattimore, University of Chicago Press c1991