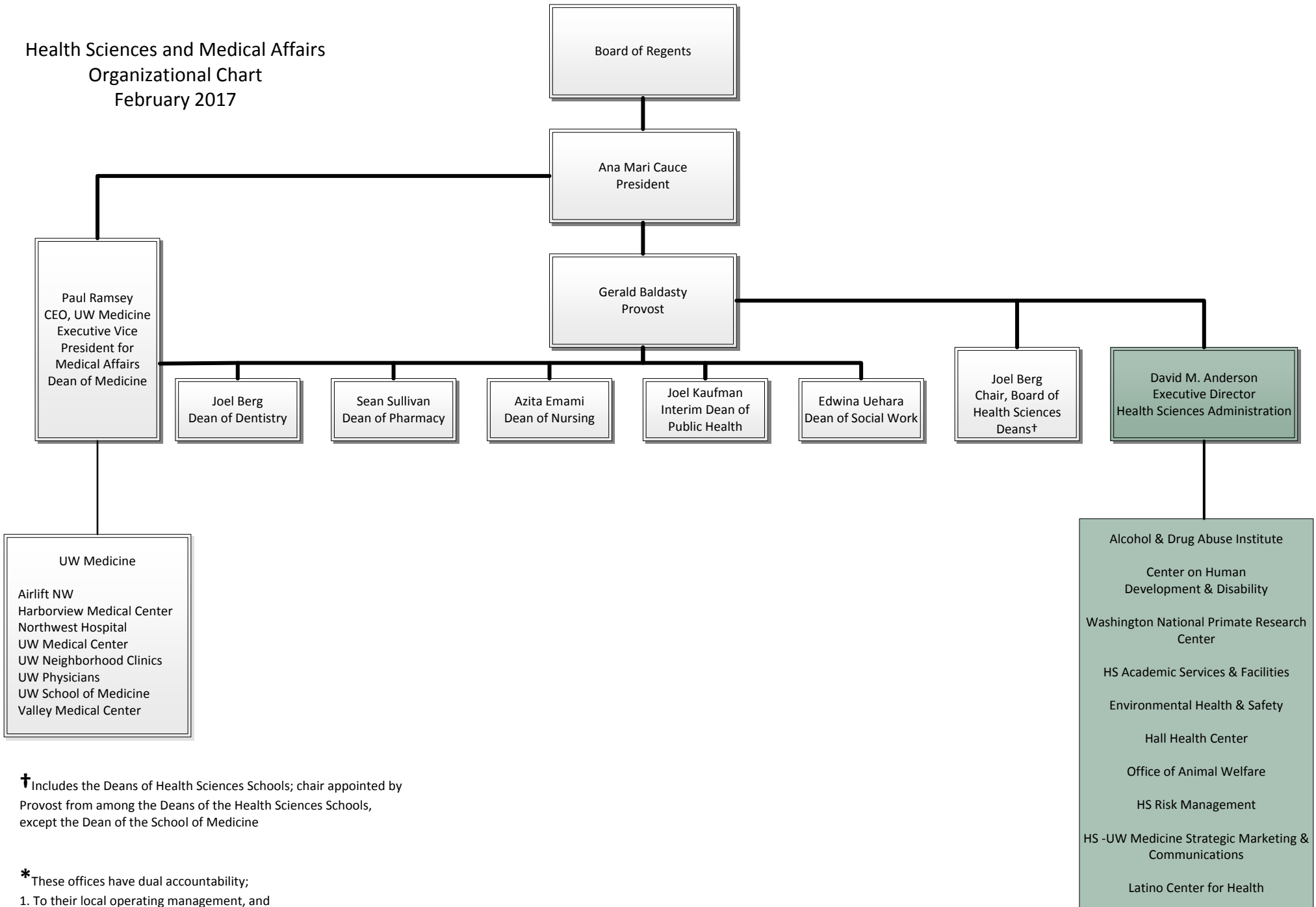


Health Sciences and Medical Affairs  
Organizational Chart  
February 2017



† Includes the Deans of Health Sciences Schools; chair appointed by Provost from among the Deans of the Health Sciences Schools, except the Dean of the School of Medicine

\* These offices have dual accountability;  
1. To their local operating management, and  
2. To the University-wide office responsible for the function