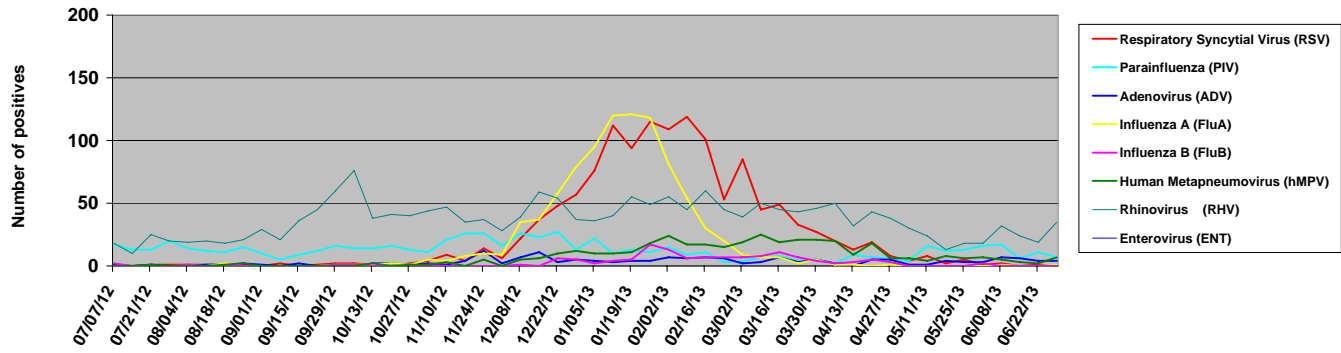


2012 - 2013 Respiratory & Enteric Viruses Seattle, Washington



Week ending	Viruses Detected (by all methods)									Denominators (number of tests performed)				Influenza A subtypes			
	Respiratory Syncytial Virus (RSV)	Parainfluenza (PIV)	Adenovirus (ADV)	Influenza A (FluA)	Influenza B (FluB)	Human Metapneumovirus (hMPV)	Rhinovirus (RHV)	Enterovirus (ENT)	Antigen Detection (UW Virology)	Qual PCR Panel (SCH lab)*	Semi-Quant PCR Panel (UW Molecular Virology)	Rapid Flu A/B/RSV PCR (UW)	2009 Pandemic AH1N1	Seasonal AH1N1	AH3N2	not done or unknown	
07-Jul-12	0	17	1	0	2	0	18	0	24	48	31	11	0	0	0	0	
14-Jul-12	0	13	0	0	0	0	10	0	33	47	31	9	0	0	0	0	
21-Jul-12	1	13	1	0	0	1	25	0	30	56	33	9	0	0	0	0	
28-Jul-12	1	20	0	0	0	0	20	1	36	52	42	8	0	0	0	0	
04-Aug-12	1	14	0	0	1	0	19	0	28	43	30	4	0	0	0	0	
11-Aug-12	1	12	1	0	0	0	20	0	40	43	31	10	0	0	0	0	
18-Aug-12	1	11	1	2	0	1	18	0	26	57	35	3	0	0	2	0	
25-Aug-12	1	15	2	0	0	2	21	1	41	55	39	12	0	0	0	0	
01-Sep-12	0	10	1	0	0	0	29	0	36	48	38	10	0	0	0	0	
08-Sep-12	2	5	0	0	0	0	21	0	29	64	28	12	0	0	0	0	
15-Sep-12	0	9	2	0	0	0	36	3	41	80	42	6	0	0	0	0	
22-Sep-12	1	12	0	0	0	0	45	0	31	67	36	7	0	0	0	0	
29-Sep-12	2	16	0	1	1	0	60	0	35	92	49	15	0	0	1	0	
06-Oct-12	2	14	0	1	1	0	76	0	42	101	44	19	0	0	1	0	
13-Oct-12	1	14	2	1	0	2	38	0	33	96	46	26	0	0	1	0	
20-Oct-12	0	16	2	2	0	0	41	0	48	67	55	27	0	0	2	0	
27-Oct-12	2	13	1	1	0	1	40	1	26	79	49	32	0	0	1	0	
03-Nov-12	4	11	2	5	1	1	44	1	41	115	44	36	0	0	5	0	
10-Nov-12	9	21	1	4	0	3	47	1	47	109	48	33	0	0	4	0	
17-Nov-12	4	26	4	8	0	0	35	1	45	102	45	48	0	0	8	0	
24-Nov-12	14	26	12	10	0	5	37	0	48	138	54	36	0	0	10	0	
01-Dec-12	6	16	2	9	0	0	28	0	45	112	64	50	0	0	9	0	
08-Dec-12	22	26	7	35	1	5	39	0	48	171	56	56	0	0	32	3	
15-Dec-12	37	23	11	37	0	6	59	0	48	195	56	42	0	0	33	4	
22-Dec-12	48	27	3	58	6	10	54	0	30	243	58	65	1	0	56	1	
29-Dec-12	57	13	5	79	5	12	37	0	25	238	51	83	1	0	78	0	
05-Jan-13	76	22	4	95	2	10	36	0	25	272	58	138	0	0	78	17	
12-Jan-13	112	10	3	120	4	10	40	0	31	320	51	154	3	0	77	40	
19-Jan-13	94	13	4	121	5	11	55	0	52	318	63	271	3	0	71	47	
26-Jan-13	115	11	4	118	17	18	49	0	34	341	58	232	3	0	75	40	
02-Feb-13	109	15	7	81	13	24	55	0	47	327	67	191	2	0	56	23	
09-Feb-13	119	9	6	54	6	17	45	0	50	300	62	189	1	0	33	20	
16-Feb-13	101	11	7	30	7	17	60	0	40	241	73	143	0	0	19	11	
23-Feb-13	53	3	6	20	7	15	45	0	37	201	54	110	1	0	14	5	
02-Mar-13	85	4	2	9	7	19	39	0	36	221	42	86	0	0	6	3	
09-Mar-13	45	7	3	7	8	25	50	0	30	194	49	86	0	0	6	1	
16-Mar-13	49	8	7	7	11	19	45	0	25	231	43	59	2	0	3	2	
23-Mar-13	33	4	3	2	7	21	43	0	33	172	56	35	0	0	2	0	
30-Mar-13	47	5	5	5	4	21	46	0	29	164	49	32	0	0	2	3	
06-Apr-13	20	2	2	1	2	20	50	0	27	141	43	28	0	0	0	1	
13-Apr-13	13	9	0	1	2	9	32	0	27	103	49	23	0	0	1	0	
20-Apr-13	19	7	5	0	5	18	43	0	29	113	58	22	0	0	0	0	
27-Apr-13	8	6	5	1	3	6	38	0	40	92	41	12	0	0	1	0	
04-May-13	4	4	1	0	0	6	30	0	27	73	35	8	0	0	0	0	
11-May-13	8	16	1	0	0	4	24	0	24	63	43	7	0	0	0	0	
18-May-13	2	12	4	0	0	8	13	0	35	64	49	5	0	0	0	0	
25-May-13	5	13	3	0	0	6	18	0	38	68	61	5	0	0	0	0	
01-Jun-13	1	16	3	0	2	7	18	0	29	59	50	6	0	0	0	0	
08-Jun-13	2	17	7	1	0	5	32	0	36	62	61	2	0	0	1	0	
15-Jun-13	0	6	6	0	0	3	24	0	35	64	49	3	0	0	0	0	
22-Jun-13	1	11	4	0	0	2	19	0	32	39	59	3	0	0	0	0	
29-Jun-13	0	7	4	1	0	7	35	0	15	48	66	3	0	0	0	1	

These data are posted weekly and tabulated as accurately as possible for educational and informational purposes.
 Last Updated: 7/2/2013
 By: Anne Cent
 Email: acent@uw.edu

* Qual PCR does not differentiate between RHV and ENT; tallied as RHV