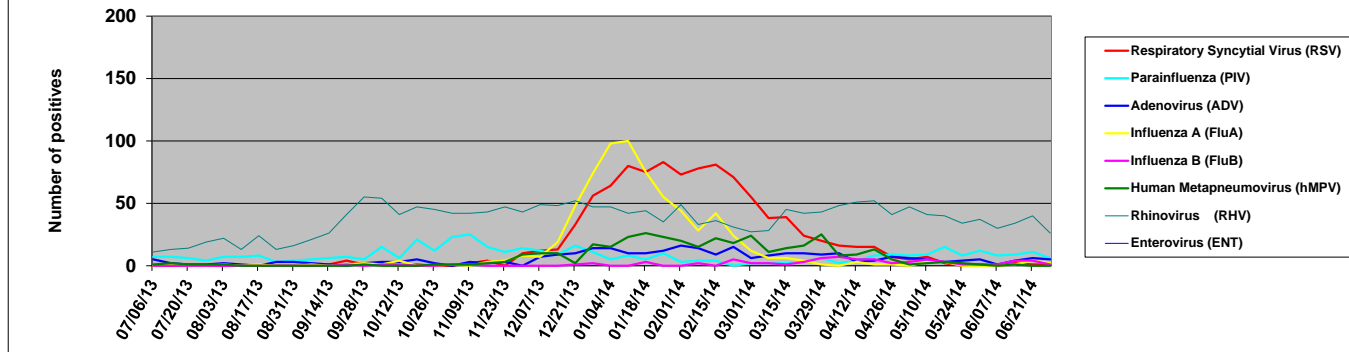


## 2013 - 2014 Respiratory & Enteric Viruses Seattle, Washington



Week ending	Viruses Detected (by all methods)									Denominators (number of tests performed)			Influenza A subtypes			
	Respiratory Syncytial Virus (RSV)	Parainfluenza (PIV)	Adenovirus (ADV)	Influenza A (FluA)	Influenza B (FluB)	Human Metapneumovirus (hMPV)	Rhinovirus (RHV)	Enterovirus (ENT)	Antigen Detection (UW Virology)	Qual PCR Panel (SCH lab)*	Semi-Quant PCR Panel (UW Molecular Virology)	Rapid Flu A/B/RSV PCR (UW)	2009 Pandemic AH1N1	Seasonal AH1N1	AH3N2	not done or unknown
06-Jul-13	0	7	5	0	0	0	11	0	26	39	39	2	0	0	0	0
13-Jul-13	0	7	2	1	0	2	13	0	25	56	33	2	1	0	0	0
20-Jul-13	0	6	1	0	0	1	14	0	24	55	31	3	0	0	0	0
27-Jul-13	0	4	1	0	0	1	19	3	36	50	48	6	0	0	0	0
03-Aug-13	0	7	2	1	0	1	22	1	29	69	38	2	0	0	1	0
10-Aug-13	0	7	1	0	0	0	13	1	32	44	35	3	0	0	0	0
17-Aug-13	0	8	0	1	0	0	24	3	23	44	33	2	0	0	1	0
24-Aug-13	0	3	3	0	0	0	13	1	23	38	39	3	0	0	0	0
31-Aug-13	0	4	3	0	0	0	16	3	30	48	29	4	0	0	0	0
07-Sep-13	0	5	2	1	0	0	21	5	29	53	23	0	0	0	0	1
14-Sep-13	1	6	1	0	0	0	26	2	37	63	45	6	0	0	0	0
21-Sep-13	4	6	0	1	1	0	41	0	22	75	46	6	0	0	1	0
28-Sep-13	1	5	2	2	0	1	55	1	32	83	63	10	0	0	0	2
05-Oct-13	1	15	3	1	1	0	54	2	29	93	52	23	0	0	1	0
12-Oct-13	0	6	3	4	1	0	41	4	32	80	62	26	0	0	2	2
19-Oct-13	1	21	5	0	0	0	47	4	29	85	48	27	0	0	0	0
26-Oct-13	0	12	2	0	0	1	45	2	13	87	45	35	0	0	0	0
02-Nov-13	0	23	0	1	1	1	42	0	33	81	55	35	0	0	0	1
09-Nov-13	2	25	3	0	1	1	42	2	35	98	60	37	0	0	0	0
16-Nov-13	4	15	2	3	0	2	43	3	30	108	59	36	0	0	2	1
23-Nov-13	0	11	3	4	0	3	47	3	38	110	68	31	2	0	2	0
30-Nov-13	10	14	0	8	0	9	43	0	37	108	56	46	4	0	4	0
07-Dec-13	12	12	7	7	0	10	49	0	29	118	54	59	6	0	1	0
14-Dec-13	13	9	9	19	0	10	48	0	37	145	75	45	15	0	0	4
21-Dec-13	33	16	10	48	1	2	52	0	29	181	70	92	32	0	1	15
28-Dec-13	56	11	14	74	2	17	47	2	34	221	48	107	60	0	5	9
04-Jan-14	64	5	14	98	0	15	47	0	44	179	108	134	66	0	0	32
11-Jan-14	80	8	10	100	0	23	42	1	41	238	101	196	82	0	2	16
18-Jan-14	75	5	10	75	3	26	44	2	41	200	78	185	58	0	4	13
25-Jan-14	83	10	12	55	0	23	35	1	37	194	74	177	42	0	3	10
01-Feb-14	73	3	16	44	0	20	49	0	28	236	88	135	34	0	3	7
08-Feb-14	78	4	14	28	2	15	33	0	29	194	76	133	21	0	1	6
15-Feb-14	81	4	9	42	0	22	36	0	33	245	58	123	32	0	4	6
22-Feb-14	71	0	15	24	5	18	31	1	26	215	50	96	17	0	4	3
01-Mar-14	55	2	6	12	2	24	27	0	35	202	62	64	9	0	1	2
08-Mar-14	38	2	8	6	2	11	28	0	26	186	48	54	2	0	3	1
15-Mar-14	39	2	10	6	1	14	45	0	27	181	52	40	4	0	2	0
22-Mar-14	24	3	10	4	3	16	42	0	21	146	51	30	1	0	1	2
29-Mar-14	20	6	9	1	6	25	43	2	28	137	48	38	1	0	0	0
05-Apr-14	16	2	10	0	7	8	48	3	28	129	49	31	0	0	0	0
12-Apr-14	15	4	3	3	5	9	51	1	27	118	60	27	0	0	2	1
19-Apr-14	15	8	4	1	5	13	52	0	38	118	59	18	0	0	1	0
26-Apr-14	7	9	7	1	2	5	41	0	22	103	36	17	0	0	1	0
03-May-14	5	8	6	0	3	1	47	1	20	78	39	12	0	0	0	0
10-May-14	7	9	5	3	5	2	41	1	22	90	52	12	0	0	2	1
17-May-14	2	15	3	3	3	3	40	2	14	93	41	14	0	0	2	1
24-May-14	0	8	4	0	1	2	34	2	23	79	48	9	0	0	0	0
31-May-14	1	12	5	0	1	1	37	2	15	87	41	8	0	0	0	0
07-Jun-14	0	8	1	0	1	0	30	2	18	50	38	5	0	0	0	0
14-Jun-14	2	9	4	1	4	1	34	0	33	76	54	8	0	0	0	1
21-Jun-14	1	11	6	4	4	0	40	1	28	77	51	4	0	0	2	2
28-Jun-14	1	6	5	2	1	0	26	1	23	56	34	2	0	0	0	2

These data are posted weekly and tabulated as accurately as possible for educational and informational purposes.

\* Qual PCR does not differentiate between RHV and ENT; tallied as RHV

Last Updated: 7/16/2014

By Anne Cent

Email: [acent@uw.edu](mailto:acent@uw.edu)