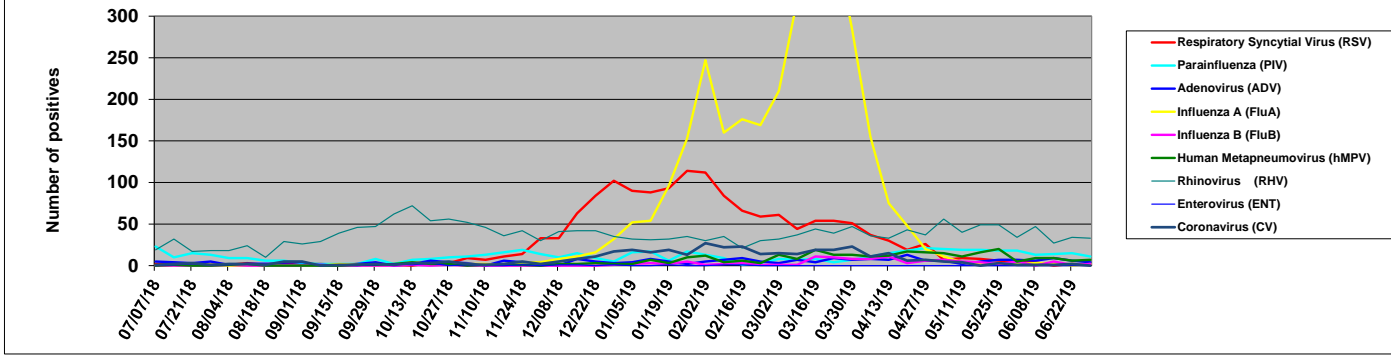


2018 - 2019 Respiratory & Enteric Viruses Seattle, Washington



Week ending	Viruses Detected (by all methods)										Denominators (number of tests performed)				Influenza A subtypes		
	Respiratory Syncytial Virus (RSV)	Parainfluenza (PIV)	Adenovirus (ADV)	Influenza A (FluA)	Influenza B (FluB)	Human Metapneumovirus (hMPV)	Rhinovirus (RHV)	Coronavirus (CV)	Enterovirus (ENT)	Antigen Detection (UW Virology)	Qual PCR Panel (SCH lab)*	Semi-Quant PCR Panel (UW Molecular Virology)	Rapid Flu A/B/RSV PCR	2009 Pandemic AH1N1	AH3N2	not done or unknown	
07-Jul-18	2	23	5	0	0	0	19	1	0	0	60	61	15	0	0	0	
14-Jul-18	2	10	4	0	0	1	32	2	1	0	82	62	21	0	0	0	
21-Jul-18	1	15	3	2	0	0	17	3	2	0	60	76	16	0	0	2	
28-Jul-18	1	13	5	1	0	0	18	1	1	0	73	72	11	0	0	1	
04-Aug-18	1	9	1	0	1	1	18	2	1	0	57	65	60	0	0	0	
11-Aug-18	3	9	0	0	0	2	24	2	3	0	73	74	15	0	0	0	
18-Aug-18	1	6	1	0	0	0	10	1	3	0	59	77	18	0	0	0	
25-Aug-18	3	6	1	0	0	0	29	5	3	0	74	67	24	0	0	0	
01-Sep-18	2	3	1	0	0	0	26	5	4	0	67	65	17	0	0	0	
08-Sep-18	2	2	1	0	1	0	28	0	0	0	73	57	40	0	0	0	
15-Sep-18	1	2	0	2	0	0	39	1	1	0	94	57	42	0	0	2	
22-Sep-18	2	2	2	2	0	1	46	1	0	0	94	60	109	0	0	1	
29-Sep-18	2	8	4	0	0	0	47	2	1	0	85	67	117	0	0	0	
06-Oct-18	1	2	0	1	0	2	62	1	2	0	97	57	166	1	0	0	
13-Oct-18	0	7	2	4	1	4	72	3	1	0	117	76	192	0	0	4	
20-Oct-18	3	8	6	2	0	2	54	3	3	0	88	72	228	0	0	2	
27-Oct-18	3	10	4	1	1	2	56	5	0	0	94	102	232	0	0	1	
03-Nov-18	9	11	3	2	0	0	52	2	1	0	97	88	205	0	0	2	
10-Nov-18	7	13	0	2	0	1	46	1	0	0	89	95	239	0	0	2	
17-Nov-18	11	16	6	1	0	1	36	2	0	0	102	81	225	0	0	1	
24-Nov-18	14	19	4	4	0	0	42	5	1	0	112	91	207	0	0	4	
01-Dec-18	33	14	4	4	0	0	30	2	0	0	98	97	242	0	1	3	
08-Dec-18	33	10	0	8	0	2	41	5	1	0	95	90	239	0	0	8	
15-Dec-18	63	15	8	11	0	2	42	8	1	0	136	85	323	2	0	9	
22-Dec-18	84	9	5	16	0	3	42	11	0	0	130	79	284	4	0	12	
29-Dec-18	102	5	3	32	1	2	35	17	1	0	76	155	387	2	0	30	
05-Jan-19	90	16	4	52	2	2	32	19	0	0	145	96	461	3	0	49	
12-Jan-19	88	17	8	54	3	7	31	16	0	0	107	164	453	2	0	52	
19-Jan-19	93	6	5	96	2	3	32	19	1	0	99	161	424	11	0	85	
26-Jan-19	114	17	2	153	5	10	35	13	0	0	145	109	480	2	3	148	
02-Feb-19	112	13	5	247	1	12	30	27	0	0	176	94	565	17	0	230	
09-Feb-19	84	9	7	160	2	4	35	22	1	0	158	103	465	15	5	140	
16-Feb-19	66	1	9	176	3	6	21	23	1	0	138	103	592	5	7	164	
23-Feb-19	59	3	5	169	1	3	30	14	0	0	153	103	641	6	2	161	
02-Mar-19	61	8	3	210	1	13	32	15	0	0	179	95	617	12	10	188	
09-Mar-19	44	7	7	319	1	8	37	14	0	0	159	101	771	6	15	298	
16-Mar-19	54	8	4	439	11	19	44	19	0	0	192	126	992	10	21	408	
23-Mar-19	54	4	9	398	10	13	39	19	0	0	203	107	1023	4	16	378	
30-Mar-19	51	7	7	284	8	13	47	23	0	0	164	107	887	4	11	269	
06-Apr-19	37	11	8	155	8	11	36	11	0	0	136	78	637	2	7	146	
13-Apr-19	30	15	7	75	11	12	33	15	0	0	152	94	484	4	5	66	
20-Apr-19	19	18	13	48	3	17	43	6	0	0	146	96	419	2	2	44	
27-Apr-19	26	21	6	20	6	16	37	7	0	0	136	76	318	1	3	16	
04-May-19	7	20	6	11	7	15	56	5	0	0	168	97	270	2	0	9	
11-May-19	9	19	2	4	5	11	40	4	0	0	136	70	209	0	0	4	
18-May-19	8	19	5	2	4	16	49	0	0	0	158	79	185	0	0	2	
25-May-19	6	18	7	3	2	20	49	3	0	0	103	85	156	0	0	3	
01-Jun-19	5	18	7	2	2	6	34	1	0	0	106	72	112	0	0	2	
08-Jun-19	4	13	6	3	0	9	47	1	0	0	102	66	75	1	0	2	
15-Jun-19	0	14	9	3	5	9	27	1	0	0	96	66	69	1	0	2	
22-Jun-19	2	15	6	0	1	6	34	2	0	0	86	64	61	0	0	0	
29-Jun-19	1	11	4	2	2	7	33	0	0	0	93	71	47	0	0	2	
06-Jul-19	1	12	8	2	1	4	28	1	0	0	94	65	56	0	0	2	
13-Jul-19	1	10	2	3	1	5	26	2	0	0	79	73	26	0	0	2	
20-Jul-19	0	6	4	4	0	4	22	1	0	0	93	48	36	0	0	4	

These data are posted weekly and tabulated as accurately as possible for educational and informational purposes. Tallies are data from UW, HMC, SCCA, and SCH laboratory testing

* Qual PCR does not differentiate between RHV and ENT; tallied as RHV

Last Updated: 7/26/2019

gregor@uw.edu

