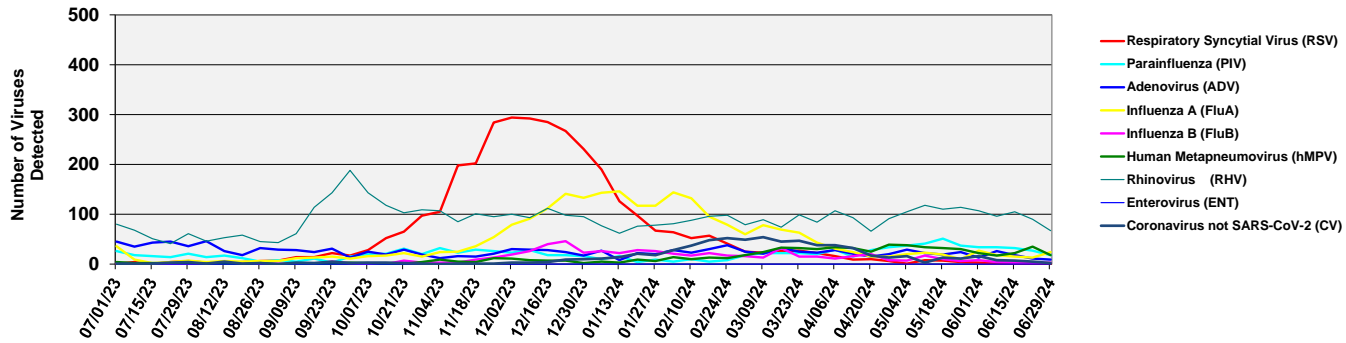


2023-2024 Respiratory & Enteric Viruses Seattle, Washington



Week Ending	Number Viruses Detected (all methods)									Number of Test Performed		
	Respiratory Syncytial Virus (RSV)	Parainfluenza (PIV)	Adenovirus (ADV)	Influenza A (FluA)	Influenza B (FluB)	Human Metapneumovirus (hMPV)	Rhinovirus (RHV)	Coronavirus (CV)	Enterovirus (ENT)	Qual PCR Panel (SCH lab)*	Semi-Quant FLUAB/RSV (UW Molecular Virology)	Rapid Flu A/B/RSV PCR (UW)
1-Jul-23	1	26	45	36	1	4	80	1	0	772	84	301
08-Jul-23	4	18	35	9	1	2	68	1	0	651	73	314
15-Jul-23	0	16	43	2	0	2	51	1	0	627	84	324
22-Jul-23	4	14	45	4	0	2	41	3	0	620	70	318
29-Jul-23	6	21	36	7	0	2	61	4	0	681	77	327
05-Aug-23	3	14	46	4	0	1	46	1	0	674	66	318
12-Aug-23	3	17	26	6	2	1	53	5	0	644	274	354
19-Aug-23	4	12	18	5	0	0	58	1	0	657	102	383
26-Aug-23	6	5	32	6	0	2	45	2	0	711	97	407
02-Sep-23	7	8	29	6	1	0	43	0	0	741	91	431
9-Sep-23	14	5	28	12	0	1	61	3	0	717	94	415
16-Sep-23	14	11	24	13	1	0	114	2	0	881	86	428
23-Sep-23	22	3	31	15	5	1	143	5	0	961	309	491
30-Sep-23	17	15	13	11	2	3	188	2	0	866	760	504
7-Oct-23	28	20	25	16	0	2	143	3	0	906	107	496
14-Oct-23	52	21	19	17	0	0	118	3	0	877	250	505
21-Oct-23	65	31	29	22	7	1	103	2	0	892	135	537
28-Oct-23	97	20	19	15	3	4	109	1	0	901	197	529
4-Nov-23	105	32	12	24	3	9	107	0	0	871	248	498
11-Nov-23	198	23	16	25	3	5	85	1	0	976	168	504
18-Nov-23	202	29	15	36	9	4	101	1	0	1039	132	480
25-Nov-23	284	26	21	54	13	12	95	1	0	963	126	523
2-Dec-23	294	23	30	79	19	11	100	3	0	1129	360	659
09-Dec-23	292	28	29	91	26	8	93	3	0	1027	310	609
16-Dec-23	285	18	28	112	40	7	112	4	0	1123	274	641
23-Dec-23	267	18	24	141	46	7	98	9	0	1106	276	668
30-Dec-23	231	16	17	133	23	2	95	10	0	909	244	728
06-Jan-24	190	10	27	143	26	5	77	11	0	996	204	747
13-Jan-24	126	16	8	146	22	3	62	14	0	970	411	739
20-Jan-24	97	4	22	117	28	9	76	21	0	977	193	713
27-Jan-24	67	9	20	117	26	6	78	18	0	965	160	733
03-Feb-24	64	5	28	144	21	14	81	28	0	1066	201	660
10-Feb-24	52	10	23	132	17	10	88	37	0	1114	149	512
17-Feb-24	57	5	30	95	22	13	96	48	0	1009	152	457
24-Feb-24	41	8	38	79	17	12	98	52	0	969	137	496
02-Mar-24	25	18	25	60	16	18	79	49	0	941	155	464
9-Mar-24	23	22	21	78	13	24	89	54	0	983	183	438
16-Mar-24	26	22	32	69	32	33	74	45	0	1039	158	459
23-Mar-24	27	22	25	63	15	32	99	47	0	969	139	413
30-Mar-24	22	20	23	43	15	30	84	38	0	920	133	484
6-Apr-24	16	29	28	31	11	34	107	38	0	933	133	426
13-Apr-24	9	15	21	24	16	32	93	32	0	749	133	422
20-Apr-24	10	28	15	15	20	25	66	17	0	532	149	424
27-Apr-24	6	34	20	15	8	39	91	13	0	565	121	406
4-May-24	1	37	29	20	7	38	105	16	0	495	134	399
11-May-24	8	41	22	23	17	34	118	3	0	483	145	403
18-May-24	7	51	19	19	10	32	110	13	0	451	107	425
25-May-24	4	37	24	10	6	30	114	11	0	472	127	411
1-Jun-24	3	34	13	27	8	22	107	16	0	421	144	425
8-Jun-24	1	34	26	18	4	17	96	8	0	425	121	425
15-Jun-24	1	32	18	15	3	22	105	7	0	429	151	427
22-Jun-24	0	27	11	13	3	35	90	5	0	394	108	410
29-Jun-24	1	18	9	24	3	18	67	2	0	363	112	439

These data are posted weekly and tabulated as accurately as possible for educational and informational purposes. Tallies are data from UW, HMC, SCCA, and SCH laboratory testing. * Qual PCR does not differentiate between RHV and ENT; tallied as RHV

Last Updated 7/3/2024

regor@uw.edu