

NOTICE!

Notwithstanding the apparent reluctance of some of our contemporaries towards observing the request of the U. S. War Economics Board in the matter of the

8-HOUR WORKING DAY

this store will—as it has consistently done since last July—positively observe the 8-HOUR WORK DAY including Saturdays.

HOUSING SHIPBUILDERS

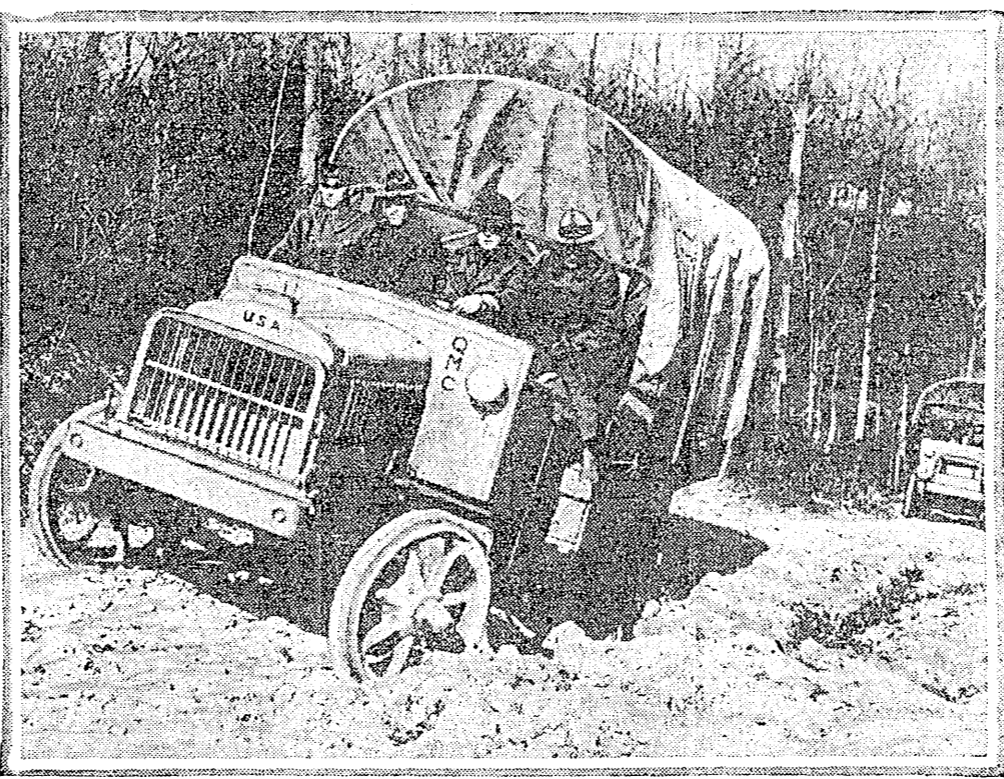
Communicate by phone or by personal call and we will attend to the details of listing your spare rooms with the HOUSING COMMITTEE.

Phone Main 6921

M. A. GOTTSTEIN FURNITURE CO.

1514 to 1520 Second Ave., Near Pike

HEAVY ARMY TRUCK PLOWING ITS WAY THROUGH SEA OF MUD EN ROUTE TO AN ATLANTIC PORT



—Photograph copyright by Committee on Public Information, supplied by International Film Service.

Some Difficulties Met on Cross-Country Run.

A new military freight service has been inaugurated by the Quartermaster's Corps to transport ammunition and relieve the congestion which the enormous supplies, necessary to the prosecution of the war, has produced. On December 13 the first truck train left Detroit bound for a port on the Atlantic coast, carrying munitions. The machines will be placed aboard a ship en route to the other side. Two of the cars have tank boilies and carry gasoline, oil and antifreezing supplies. Some of the difficulties which heavy machines experience on a long haul are well illustrated in this picture.

OFFERS OF PEACE WITHDRAWN BY TEUTONS

Cancellation of Brest-Litovsk Terms Explained as Result of Failure of Allies to Accept Them.

(Continued From Page One.)

they do and take more territory, they will be no nearer an end of the war.

The correspondent says that the greatest difficulty of the Bolsheviks in these preparations are transport and supply, of which the former is the less hopeful question.

Ensign Krylenko, the Bolshevik commander in chief, is reported to be organizing a volunteer army and has ordered all officers to return to the posts they held before the Bolshevik revolution.

Class Warfare Spreads.

In reference to the civil wars in different parts of Russia the correspondent declares that the Bolsheviks are not yet obtained the upper hand. Thus, the Bolsheviks are not warring against the Germans, but against the Bourgeois Ukrainian Rada; not with the Cossack country, but with the military government of the Cossacks.

The Daily News correspondent says that the anti-Bolshevik newspapers do not record the defeat, but declares it is curious that after each defeat the Bolsheviks advanced instead of retreating.

The map, he says, shows that each reported defeat takes the Bolsheviks further into the enemy country. He mentions some of these advances and adds that the Black Sea fleet is now controlled by the Bolsheviks.

The Petrograd correspondent of The Times says that enormous sums have been taken from the State Bank by forged checks since the bank has been in the possession of the Bolsheviks. Three million rubles were withdrawn through one spurious check.

KALEDINE GATHERING SUPPORT; DENIES PLAN TO FIGHT BOLSHEVIKI

LONDON, Friday, Jan. 11.—A majority of the Cossacks and the population of the Don district are grouping themselves around the Don military government under General Kaledine, according to a special dispatch from Petrograd purporting to come from an authorized account of conditions in South Russia.

General Kaledine's principal aim is not to fight the Bolsheviks, but to consolidate democratic republican power of the Don district. Alexieff, former Russian commander-in-chief, around whom has gathered a corps of some 25,000 officers, has considered it necessary to organize a struggle against the Bolsheviks on an all-Russian plan and to create in Russia a moderate liberal regime. Monarchical principles are said to be very strong among Alexieff's group.

LENINE THREATENING CENTRAL POWERS WITH REVOLUTIONARY WAR

LONDON, Friday, Jan. 11.—Nikolai Lenine, the Bolshevik premier, although he has possibly gone on a holiday to Finland, also possibly may go to Stockholm to confer with German and Austrian Socialists, the Petrograd correspondent of The Daily News says. In a speech before the Central Executive of the Petrograd Premier Lenine said: "I fear we shall have to stop the demobilization and prepare for war with Germany and her allies do not accept."

Out of the High Rent District

20 Years' Experience Fitting and Making Glasses. We will duplicate broken lenses regardless of age. We were made. Save the Pie'es. Eyes examined FREE without the use of drugs. We will fit Reading or Distance Glasses in gold-filled frames for \$2.50. Ask us about our Double-Vision Glasses for both reading and distance. WE SAVE YOU MONEY. Schoonmaker Optical Co. 128 1/2 Ave. University. One Block South of Public Market.

REPUBLIC OF THE DON PROCLAIMED; KALELINE TAKES CHIEF OFFICES

PETROGRAD, Friday, Jan. 11.—Reports from Rostov today say that the Republic of the Don has been declared, existing with General Kaledine as president and prime minister.

REPUBLICS IN RUSSIA PLANNING FEDERATION

PETROGRAD, Friday, Jan. 11.—The social revolutionists are planning to hold a convention of peasants' deputies and other organizations in connection with the All-Russian Workers' and Soldiers' Congress on January 21. An effort will be made to form a federation of Russian republics, including the Ukraine, Siberia, the Don territory and the Caucasus.

TEUTON WAR BREAD CAUSE OF SCOURGE

Loaf Emits Disagreeable Odor and Has Unpleasant Taste—Government Alarmed.

WASHINGTON, Friday, Jan. 11.—Germany's war bread, reported to be baked with surplus flour substitutes, has caused widespread sickness in the Kaiser's empire, according to reports received here. The situation in Germany, it was said, was so serious that a committee of experts has been appointed in Berlin to take drastic measures to remedy it. The German war loaf, the report stated, "emits a disagreeable odor and has an unpleasant taste and flavor, and causes a serious illness which, it is said, has approached the dimensions of a scourge in Berlin and other German cities."

ALL LINES OVER CASCADES OPEN

With the opening of the Great Northern's bridge at Alpine and the completion of a Northern Pacific temporary bridge across the Yakima River at Thorp all transcontinental lines centering at Seattle are open across the Cascade Mountains. The Great Northern last night yesterday afternoon crossed the bridge at Alpine and the Great Northern's eastbound passenger train will use the new bridge for the first time. The Northern Pacific began using its new bridge at Thorp yesterday afternoon, sending its special coal train to Eastern Washington and handling passenger trains over the company's own line. It is expected the Great Northern will be able to resume service on the Skagit branch by Monday. That branch road was hardest hit by the floods in the Skagit River valley.

Will Teach Children More About Seattle

After a conference yesterday with Fred W. Graham, D. C. Conover, P. A. Hathaway and H. H. Matson, comprising a committee of the Chamber of Commerce and Commercial Club, School Superintendent Frank S. Cooper readily agreed to cooperate in plans for educating industrial children concerning Seattle's industrial and commercial advantages and needs. The idea is to assure the civic efficiency of the rising generation, the business men and women of tomorrow. A students' committee from each high school will accompany the industrial bureau inspectors on their weekly visits to manufacturing plants and bring back to the student body the results of their observations. Cooper also will make arrangements for the industrial children to discuss Seattle, its advantages and needs, before the high school assemblies. The speakers will be supplied from the membership of the various bureaus of the Chamber. Fred W. Graham is chairman of the industrial committee, which is arranging these meetings and supplying speakers. New Broiler. When folded one way a new broiler holds thin strips of bacon securely and when reversed accommodates thicker slices of meat.

TRAFFIC QUESTION BEFORE CITIZENS

Council of Defense Discusses Problem of City Street Car Transportation.

At last night's meeting of the King County Council of Defense at the council chambers in the County-City Building, called to discuss the problem of transporting Seattle's shipyard workers between the plants and their homes, it was decided to hold a second meeting tonight to appoint a committee to work out a solution, if possible. City, county, state and national officers, shipbuilding heads and representatives of the Port Commission, the traction company and the Itney bus operators were present. Discussion of the question at issue covered a wide range. The traction company, through General Manager A. L. Kemper, declared it impossible to get enough men to operate cars at the rush hours of the day, but said that conditions would improve a few weeks hence when fifty-five one-man cars were put into service on uptown lines, releasing that many employees for shipyard coaches. Ten trailers will be attached to as many shipyard coaches, he said. W. Wiley, president of the Seattle Construction & Dry Dock Company, thought the Lake Washington ferries might be operated to the bay shipyards only, and Hamilton Highway and

Graham's Sale of Blouses

A regrouping of Blouses consisting of broken lines and advantageous special purchases enable us to offer

FOR SATURDAY'S SELLING SIX LOTS OF BLOUSES AT UNUSUALLY LOW PRICES

\$2.95, \$3.95
\$4.95, \$5.75
\$7.50, \$10.00

The Blouses at \$7.50 and \$10.00 are mostly in dark suit shades—Burgundy, navy, brown, taupe, green and black—in beaded or embroidered Georgette. Former prices were \$10.00 to \$18.50.

The Blouses at \$4.95 and \$5.75 include dark suit shades, white and flesh, in tucked, frilled and lace-trimmed Georgette. A few plaid and striped silks in this lot. Values \$5.75 to \$8.50.

The Blouses at \$2.95 and \$3.95 are special purchases and offer an excellent range for selection, in Georgette and crepe de Chine, in flesh and white.

COAT DISPOSAL

Two Interesting Groups

\$29.50 | \$39.50
Formerly \$35 and \$40 | Formerly \$50 and \$55

In wool velours, broadcloth, pompop, Hudson seal, plush or Kerami trimmed. Plain models also shown. Extraordinary values at \$29.50 and \$39.50.

SECOND AT SPRING.

SEATTLE MAN DEAD
James McCarthy, aged 41, died last night at the Hollywood Apartments, 118 John St. He was a resident of Seattle eighteen years. He leaves a widow.

FROST KING RULES BIG AREA IN WEST

Devil's Lake, N. D., and Valentine, Neb., Coldest Places in U. S., With 32 Below.

CHICAGO, Friday, Jan. 11.—Devil's Lake, N. D., and Valentine, Neb., share honors today as being the coldest places in the United States. The temperature at each of these places, according to reports received here, is 32 degrees below zero.

NEBRASKA IN GRIP OF GENERAL COLD SPELL

LINCOLN, Neb., Friday, Jan. 11.—A general cold spell gripped Nebraska today, the coldest spot in the state, Valentine, reporting a minimum temperature of 22 degrees below zero. The forecast is for continued cold.

SOUTHWEST VISITED BY COLD AND SNOW

EL PASO, Tex., Friday, Jan. 11.—The Southwest today is experiencing the coldest weather in years and is facing a blizzard and increasing cold. The thermometer dropped to 13 degrees above zero today.

HEAVY SNOWS STALL KENTUCKY STREET CARS

PADUCAH, Ky., Friday, Jan. 11.—Street car traffic here is practically suspended today by eighteen inches of snow. The worst snow of the winter in this section is falling today.

TWENTY-TWO BELOW AT HAVRE, MONTANA

DENVER, Friday, Jan. 11.—This section of the West continued to experience below zero temperatures today. Drifting snow in Eastern Colorado impeded railroad traffic and trains, especially from the East. Havre, Mont., reported 22 degrees below zero.

Port Blakeley Man Is Called by Death

Charles Ryan of Port Blakeley, who had lived on Puget Sound for 50 years, died in Seattle yesterday. The funeral services were held at the Boney-Watson undertaking rooms at 9 this morning and were attended by residents of Port Blakeley. Ryan had been ill for several days.

Northern Pacific-Brakeman Is Killed

Roy W. Fuller, age 26, a brakeman on the Northern Pacific, was killed in a train accident at Fallbridge yesterday afternoon. His home is in Seattle. He leaves a widow. The funeral will be held at 3 Saturday afternoon at the Boney-Watson undertaking rooms.

CONSERVATISM

PROBABLY no one thing is more characteristic of this feature of the METROPOLITAN BANK than its personnel.

DIRECTORS
H. C. Henry
E. G. Ames
W. G. Collins
O. D. Fisher
P. M. Henry
J. T. McVay
C. D. Stimson
E. A. Stuart
Geo. W. Trimble

NOW A MEMBER OF THE FEDERAL RESERVE SYSTEM

METROPOLITAN BANK
FOURTH AND UNION SEATTLE WASHINGTON

Sublime Baking Powder

is pure, made in Seattle and is more economical than any other brand. Your grocer will refund your money if

SUBLIME doesn't satisfy.

1/2 lb., 15c; 1 lb., 25c; 5 lbs., 80c.

Vittucci Importing Co.
Manufacturers and Wholesale Grocers.
309 Occidental Ave.
Elliott 652.

SHAFER'S SEMI-ANNUAL Sale of Manhattan Shirts

There is probably no better known or finer line of Men's Merchandise than Manhattan Shirts. At this sale authorized by the makers we have an opportunity of offering some extreme values, and all of the handsome patterns of the season are included at these prices:

\$1.75 MANHATTAN SHIRTS, now	\$1.35
\$2.00 MANHATTAN SHIRTS, now	\$1.65
\$2.50 MANHATTAN SHIRTS, now	\$1.85
\$3.00 MANHATTAN SHIRTS, now	\$2.15
\$3.50 MANHATTAN SHIRTS, now	\$2.85
\$4.00 and \$4.50 MANHATTAN SHIRTS	\$3.15
\$6.00 MANHATTAN SHIRTS, now	\$4.85

All sizes are intact. Come in and select your season's supply.

Buy Your Suit and Overcoat Now At Our Present Reasonable Prices.

The scarcity of good woollens and the advancing cost of hand tailoring makes it good economy to buy your Suit and Overcoat now, and an extra one, for that matter, when you have an opportunity to make your selection from such a complete stock as ours—at such truly reasonable prices

\$20 | \$25 | \$30

THE BOYS' YOUNG MEN'S SUITS AND OVERCOATS DEPARTMENT

A store by itself—with the most complete stock of juvenile clothing shown on the Coast.

Good Knickerbocker Suits in a range of good woollens and pleasing patterns; built to give good service, and priced at \$6.00, \$7.50, \$8.50 and \$10.00.

Sam Peck and Skolney's Hand-tailored Suits for boys, the very latest styles in the finest woollens. Priced at \$12.50 and \$15.00.

Oregon Wool Mackinaws Sizes for boys and young fellows. Made of the famous Oregon wool, and every garment guaranteed; \$6.00, \$7.50 and \$8.50.

SHAFER BROS.

Seattle's Largest Clothiers
First and University Second and University