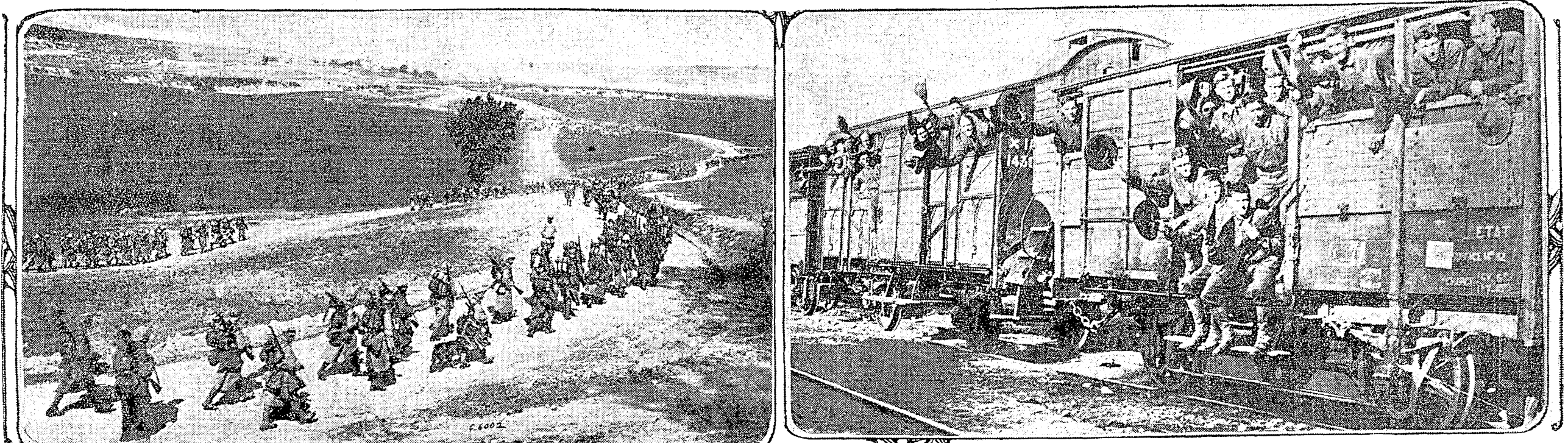


EXPERTS INVESTIGATE INCREASE OF LIVING COSTS IN SEATTLE

Commission Will Submit Report to United States Shipping Board Wednesday

PICTURES THAT PUT YOU IN CLOSE TOUCH WITH GREAT WAR



CALDWELL PLANS TO MAKE VALUATION OF SEATTLE CAR LINES

Corporation Counsel Proposes to Employ Experts to Get Figures in Order to Fight Application for Six-Cent Fares.

EXPENDITURE of from \$50,000 to \$100,000 to employ experts to make a valuation of the street car property of the Puget Sound Traction, Light & Power Company, in anticipation of the company's petitioning the state public service commission for an order permitting an increase in the rate of fare in Seattle from 5 to 6 cents, is proposed by Corporation Counsel Hugh M. Caldwell.

ALIEN ENEMIES IN SEATTLE REGISTER STARTING MONDAY

Germans Not Naturalized Required to Appear Before Officials With Photos.

REGISTRATION of all German alien enemies in Seattle and other cities in the United States will begin tomorrow and continue for the week.

Those who register in Seattle will register at the Central Police Station and those living outside, but served by the city, at the office of the registrar, Postmaster Edgar Battle, Room 160, of the Postoffice Building.

Marriage Since May Doesn't Make Slacker

OLYMPIA, Saturday, Feb. 2.—Simply because a registrant has married since May 18, 1917, local boards are not to assume from that fact alone that he did so to avoid military service.

Parent-Teachers of County Reorganize

Members of the King County Federation of Parent-Teacher Associations met yesterday afternoon in Moose Hall at Auburn and voted unanimously to disband the organization.

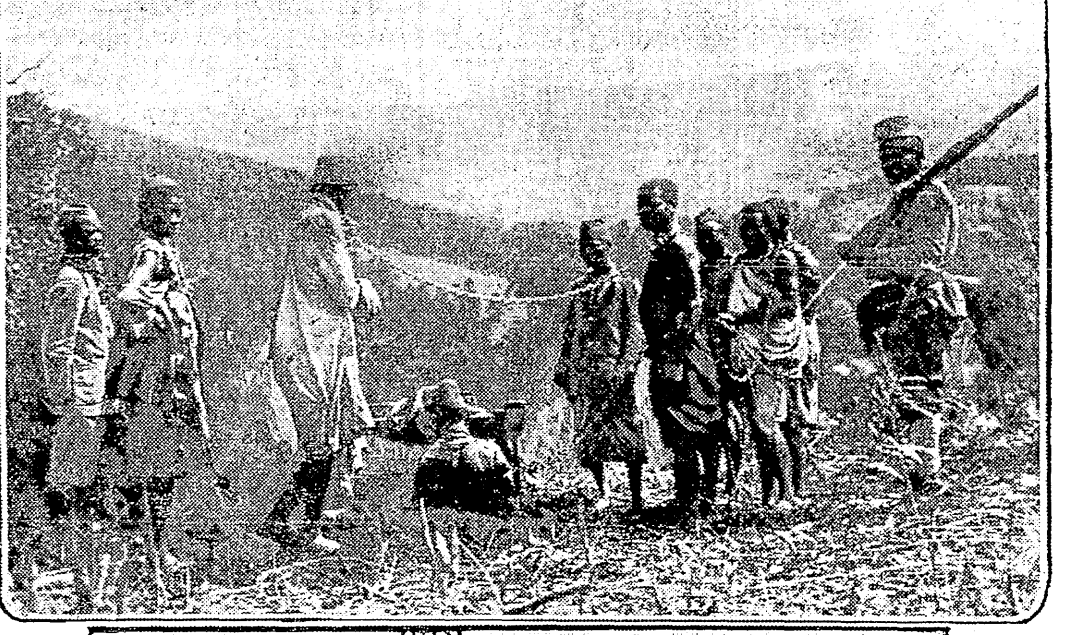
So far no intimation has been made by the officials of the traction company that they intend to ask for an increase, although the commission in a recent order denying the right to employ women as conductors, announced such a petition would be entertained.

To Resist Fare Advance. Acting under authority of the Council, in directing that he prepare such an ordinance as he deemed advisable to resist any increase in street car fares, Caldwell yesterday transmitted by the council a bill authorizing the employment of not to exceed two experts to make the valuation, leaving the amount of the proposed fare such a purpose to be filled in by the Council.

Just what valuation such as the city desires will cost is not known, although it has been announced that the company paid experts \$100,000 to make a similar valuation. That the commission will be required to pay the rate that will be needed by the city is regarded as probable, and for that reason the valuation will be needed may not exceed \$50,000.

"As an abstract proposition it would seem that the provisions of the Public Service Commission law requiring the valuation of the properties of all public service companies within the state should be sufficient to cause a bona fide valuation to be made by the Public Service Commission itself.

So far as I can learn, the company has not as yet accepted the commission's invitation to apply for an increase of rates beyond the maximum fixed by the statute.



French poilus (upper left) shown marching along country roads leading to Verdun, to relieve troops in the trenches. (Photo by International Film Service).

NOVEL ADVERTISING STUNTS PLANNED FOR THRIFT DRIVE

Reginald H. Parsons Working Out Mysterious Publicity Scheme for Campaign.

(For Editorial Comment See Page 6) PLANNING a series of publicity features which are to be shrouded in opaque mystery until the time comes for their execution, and all of which are designed to make the campaign on behalf of War Savings Stamps and Thrift Stamps a household word in Seattle and King County, Reginald H. Parsons, city chairman, after a consultation yesterday with Edwin Selvin, whom he appointed Thursday as chairman of his publicity committee, announced the complete committee, believed to be the strongest body of the sort ever organized here.

Chairman Selvin made the greater number of selections with the approval of Chairman Parsons. The complete list follows: Edwin Selvin, editor of Business Chronicle; Hazel J. Titus, superintendent of the dining car service, Northern Pacific Railroad.

The committee will hold its first meeting Tuesday afternoon at 4 o'clock and plan out a whirlwind campaign of advertising novelties so that King County will be sure of raising the \$3,000,000 allotted to it by the government.

Chairman Parsons yesterday met with his city executive committee at the headquarters rooms in the Lyon Building. Each member brought up the special problems which he had encountered and they were solved by general discussions.

1919 AUTOMOBILE LICENSES PUT ON SALE IN SEATTLE

Owners Warned to Comply With State Law Under Severe Penalties.

COUNTY AUDITOR NORMAN M. WARDALL placed on sale yesterday automobile licenses to cover the period from March 1 next to February 28, 1919. All licenses now held by owners expire on the last day of this month and new ones must be had by March 1 to avoid prosecution.

In a special bulletin of information to automobile owners, F. B. Williams, deputy secretary of state, says that violations of the law will be prosecuted this year with the utmost vigor and many of the minor offenses passed by the officials during the last twelve months will not be tolerated again.

License plates must be bolted on washers used on outside of plate to keep bolt-head from pulling through, and thread destroyed to prevent removal of lock nut.

FLOUR PROFITEERS TO BE CURBED BY FEDERAL DIRECTOR

Representative of Food Administration Issues Regulations Applying in Seattle.

ATTEMPTS of dealers, wholesale or retail, to make an excessive profit on wheat flour or substitutes, will receive the prompt attention of the Food Administration, according to information received today by B. C. Beck, Food Administrator for Western Washington, from the office of Charles Heberlein, representative of the United States Food Administration in this state.

Wholesale dealers are required not to buy from millers more than 70 per cent of their purchases of flour for the corresponding months of the previous year, figured on a quarterly basis.

Substitutes for wheat flour shall be sold at not more than a reasonable advance over the actual cost without regard to the cost of replacement values at time of sale.

FACTS WILL DECIDE QUESTION OF RAISE IN SHIPYARD PAY

Metal Trades Unions Seek Additional Allowance on Account of Upward Trend of Necessities in Pacific Coast Cities.

HAS the cost of living increased in Seattle, Portland and San Francisco since last October, and if so how much?

On the answer to this question, to be made in a report that Dr. Carlton H. Parker of Seattle will submit to the United States shipping board Wednesday, largely depends the answer the shipping board will give to a demand for a wage increase made on behalf of more than 70,000 Pacific Coast shipyard workers.

Instructed by the wage adjustment committee of the Shipping Board to inquire into the merits of the claim made by the various shipyard unions, the wage scale fixed by the Macy Commission, which visited this Coast last October to settle shipyard strikes in Seattle, Portland and San Francisco, has become inadequate by reason of a rise in the cost of living since that time.

The first demand for the reopening of the wage scale came early last month, when the Seattle Metal Trades Council and its sixteen affiliated unions, representing about 22,000 workers, were organized by shipyard unions in the other Pacific Coast cities working under the government agreement.

Comparative prices on more than 100 food products, a common use was obtained and tabulated. Like tabulations of comparative prices were made with respect to six other different articles of clothing.

Two great state colleges, the University of Washington and the University of California, the three departments of economics and sociology at the disposal of the survey free of cost to the government, through the University of Washington, were employed.

Changes Are Same. That changes in the cost of living have been virtually the same in Seattle, Portland and San Francisco, the three cities to which, with their suburbs, the survey was confined, in Seattle and San Francisco the changes were almost identically the same.

Shipyard workers and their wives as a class are purchasers of the better grades of meats, groceries and provisions, and of the better lines of clothing and shoes.

U. S. PLANNING TO CURB PROFITS OF RETAIL DEALERS

Warning Issued by Herbert C. Hoover Also Includes Wholesale Handlers of Flour.

WASHINGTON, Saturday, Feb. 2.—With the retail price of flour up 39 cent above its price when the war broke out, the Food Administration tonight set out to check profiteers among wholesale and retail dealers.

It is a warning issued by Herbert C. Hoover, who is in charge of the department, that maximum gross profits must not exceed 10 to 15 per cent.

It also comes as a forerunner of the introduction in Congress of price fixing laws designed to bring the retailers under control of the government.

Entertain Veterans of Three Wars Here. The Young Men's Republican Club expect to entertain veterans of the Civil and Spanish-American wars and soldiers of the great world war now in progress at their Lincoln Day banquet in the Lincoln Temple, February 12.

Students Eligible to Try for \$100 Prize. University of Washington students are eligible to compete for the annual William H. Baldwin prize of \$100 for the best essay on "County Government in the State of Washington."