

A National Portrait of Wraparound Implementation

Findings from the Wraparound Fidelity Index

Eric Bruns

University of Maryland School of Medicine

John Burchard

Jesse Suter

Kristen Leverentz-Brady

University of Vermont Department of Psychology

16th Annual System of Care Research Conference

Tampa, FL, March 3, 2003

For more information, please contact:

Eric Bruns: 410-328-3522; ebruns@psych.umaryland.edu

John Burchard: 802-656-3824; jsburchard@aol.com

www.uvm.edu/~wrapvt

Improving outcomes for children with EBD *Interventions cited¹*

- ◆ **Multisystemic Therapy (MST)**
- ◆ **Treatment Foster Care**
- ◆ **Family Centered Intensive Case Management**
- ◆ **Wraparound approach**

◆ *From Burns, Hoagwood, & Maultsby, 1998*

¹*In order of development of the research base*

Prevalence of “Wraparound”

- ◆ **Estimated 200,000 youth engaged in services delivered via Wraparound approach (Faw, 1999)**
- ◆ **Recent survey found 38 of 42 State Mental Health liaisons report Wraparound approach being used in their state (Burchard, 2002)**
- ◆ **Vast majority of CMHS-funded System-of-Care sites report utilizing Wraparound approach**

Wraparound Approach

Reasons for Popularity and Visibility

- ◆ Wraparound is a grassroots-driven common-sense alternative to restrictive, inflexible, professional-driven, and deficit-based service paradigms
- ◆ Promise of cost savings through diversion from high-cost and restrictive placement options
- ◆ Wraparound is both a reflection of and an element of systems of care (Stroul, 2002)
 - System of care principles as intended to be implemented for individual families in a discrete intervention

Wraparound Approach

System of Care values applied to a specific intervention

- ◆ Convening/running an interdisciplinary team
- ◆ Determining family strengths and needs
- ◆ Setting goals
- ◆ Planning and implementing a set of services specific to the needs of the family
- ◆ Engaging and leveraging community-based and natural supports
- ◆ Performing case management duties
- ◆ Determining indicators of success
- ◆ Measuring outcomes – clinical and w/resp. to goals
- ◆ Continually revising care plans based on evidence for their effectiveness

Wraparound Approach

Reasons for Popularity and Visibility

- ◆ Provides an opportunity to implement a nationally respected, “promising” model that still allows for local flexibility in design and implementation
 - No national standards
 - Philosophical principles (defined recently) dictate service delivery

Wraparound Approach

Elements

- ◆ Parent and Youth Voice and Choice
- ◆ Youth and Family Team
- ◆ Community-based Services & Supports
- ◆ Cultural Competence
- ◆ Individualized Services & Supports
- ◆ Strength-based Services & Supports
- ◆ Natural Supports
- ◆ Continuation of Care
- ◆ Collaboration
- ◆ Flexible Resources/Funding
- ◆ Outcome-based Services & Supports

Wraparound Approach

Practice Principles

- ◆ **Community collaborative structure**
- ◆ **Lead Organization to manage implementation**
- ◆ **Referral mechanism**
- ◆ **Resource coordinators with specific duties**
- ◆ **Ongoing strengths and needs assessments**
- ◆ **Child and family team established**
- ◆ **Engagement of team toward a collective vision, related goals, and individualized plan**
- ◆ **Development/maintenance of crisis/safety plan**
- ◆ **Measurable, monitored outcomes**
- ◆ **Community collaborative structure review process**

A “Portrait” of Wraparound

Goals of Current Presentation

- ◆ **Describe Wraparound implementation nationwide**
 - Common deviations from defined elements and philosophical principles
 - Extent of variation across sites nationally
- ◆ **Explore relationship between administrative and system characteristics and “fidelity” to elements and principles in service provision**

Intervention Development

Typical progression

Theoretical framework

Based on problems/ proposed solutions

Intervention components

Defined and specified at multiple levels

Fidelity measurement; Pilot studies

Small intervention trials, fidelity measure based on specified practices

Clinical trials

Of well-defined and measured intervention

Wraparound Fidelity Index 2.0/2.1

Purpose and previous findings

- ◆ **Assess fidelity multiple elements/principles of the Wraparound process through opinions of multiple informants**
- ◆ **Allow for comparability between methods and across sites**
- ◆ **Feature psychometrics that permit summary scores across families or sites**
 - Internal consistency (for Total WFI scores), test-retest, and construct validity
 - Fidelity scores found to be associated with outcomes

Wraparound Fidelity Index 2.0/2.1

Respondent Scheme, by element

Element	<u>Number of items</u>		
	Resource Facilitator	Parent	Youth
Parent/Youth Voice and Choice	4	4	4
Youth and Family Team	4	4	4
Community-based Svs/Suppts	4	4	4
Cultural Competence	4	4	4
Individualized Svs/Suppts	4	4	4
Strength-based Svs/Suppts	4	4	4
Natural Supports	4	4	4
Continuation of Care	4	4	4
Collaboration	4	4	
Flexible Resources/Funding	4	4	
Outcome-based Svs/Suppts	4	4	
Total Items	44	44	32
0-2 scale = Element Scores Range	0-8	0-8	0-8

Portrait of Wraparound

National pilot sample

Site	N Families	Number of WFI forms collected		
		WFI-RF	WFI-CG	WFI-Y
Alaska site 1	14	13	12	6
Alaska site 2	3	1	3	2
Arizona	34	26	22	24
California site 1	1	1	0	0
California site 2	20	20	12	19
California site 3	25	24	23	11
California site 4	44	32	26	31
Indiana site 1	11	11	11	6
Indiana site 2	17	17	16	6
Kentucky	32	27	31	20
Missouri site 1	40	40	30	19
Missouri site 2	46	46	37	25
Nebraska	43	18	32	0
North Carolina	55	0	43	40
Vermont site 1	5	3	3	0
Vermont site 2	14	14	12	10
Total WFIs	404	293	313	219

NOTE: WFI = Wraparound Fidelity Index; RF = Resource Facilitator; CG = Caregiver; Y= Youth

Portrait of Wraparound

National pilot sample

Gender

64% male

Age

Mean=13.3 (SD=3.3)

Range: 4-19

Race

63% Caucasian

19% African-American

7% Hispanic

Custody

at least 1 bio parent

31%

adoptive parent

5%

relative

9%

state

29%

unknown

26%

Portrait of Wraparound

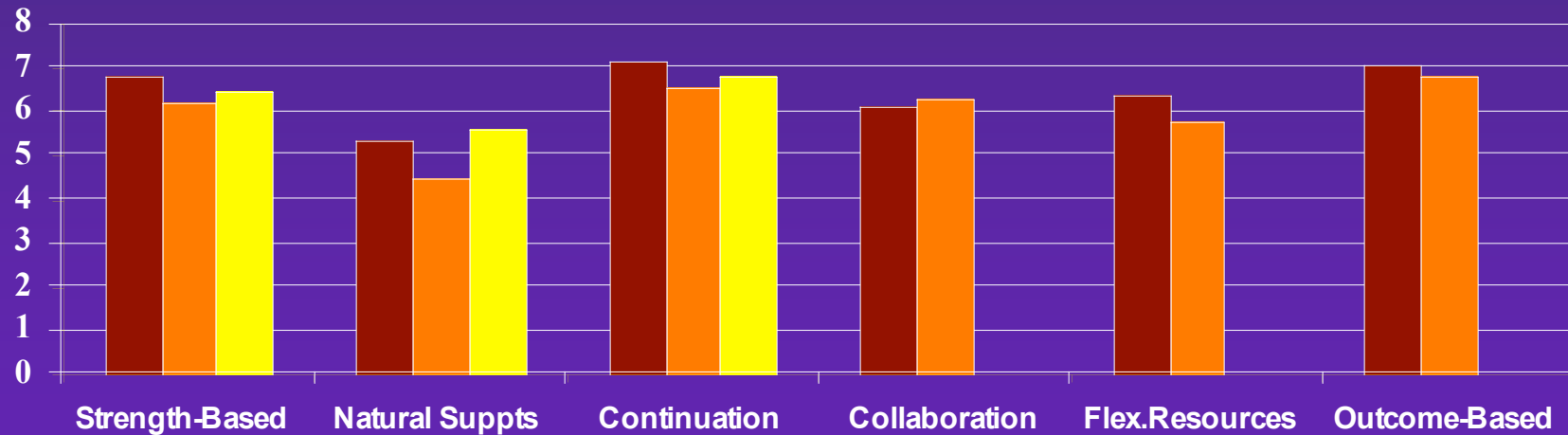
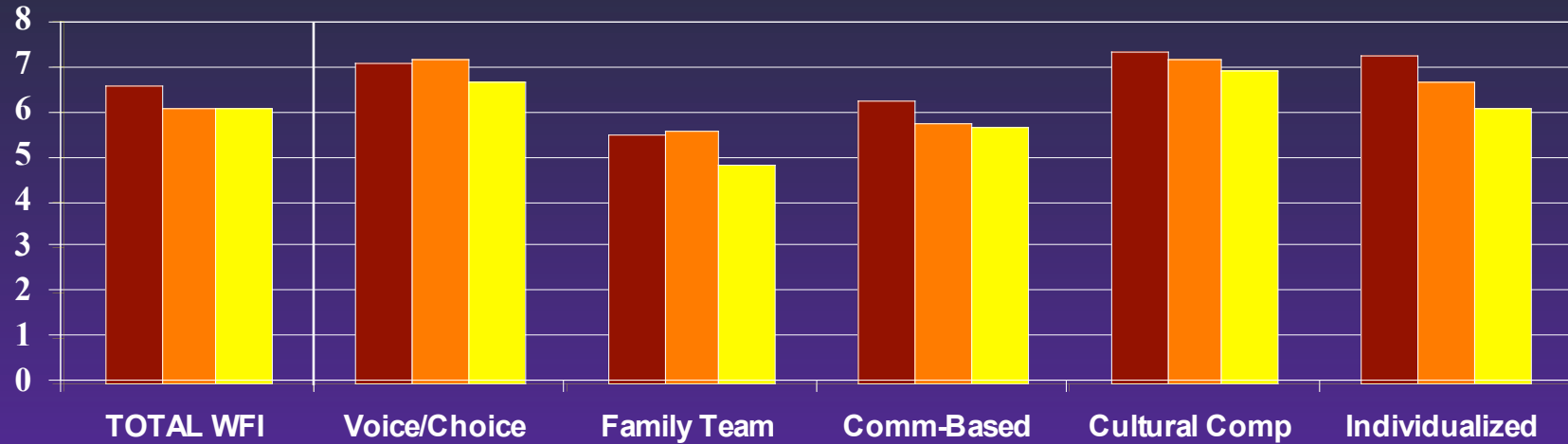
National pilot sample

Primary Axis I Diagnoses

ADHD	33%
Mood Disorder	27%
Adjustment Do	9%
Learning Do	6%
PTSD	4%
Other	23%

Portrait of Wraparound

WFI Scores across Elements and Respondents



■ Resource Facilitator ■ Caregiver ■ Youth

Portrait of Wraparound

WFI items falling below mean

WFI ELEMENT	WFI ITEM	P form			RF form		
		N	Mean	SD	N	Mean	SD
Youth and Family Team	Is there a friend or advocate of your family or child who is a member of the team	307	1.02	0.98	289	0.84	0.97
Youth and Family Team	Is there a representative from the school (or child care provider) who is a member of the team	304	1.09	0.97	291	1.1	0.96
Community-Based Services	Is the youth attending a regular community school or job training program (or working at a paying job)	-	-	-	292	1.33	0.94
Strength-Based Services	Does the community help your child get involved with activities in the community	309	1.12	0.94	-	-	-
Strength-Based Services	Were the strengths of your community used in the planning or modification of services	302	1.34	0.88	-	-	-

Portrait of Wraparound

WFI items falling below mean

Natural Supports	Does the team get your child involved with activities he/she likes and does well	304	1.39	0.84	-	-	-
Natural Supports	Does the team help you receive support from your friends and family	303	1.27	0.93	-	-	-
Natural Supports	Does the team help your child develop friendships with other youth who will have a good influence on his/her behavior	301	1.25	0.92	-	-	-
Natural Supports	Does the team replace professional services with support from friends, family, and community organizations	305	1.14	0.91	289	1.37	0.74
Continuation of Care	Does the team rely mostly on professional services	306	0.8	0.92	291	0.93	0.9

Portrait of Wraparound

WFI items falling below mean

Collaboration	Has the team helped your family develop or strengthen relationships that will support you when the team has been discontinued	305	1.33	0.9	-	-	-
Collaboration	Is it difficult to get different services providers (or agencies) to attend youth and family team meetings when they are needed	305	1.39	0.82	292	1.43	0.76
Flexible Resources	Is the financing for your child's service and support plan shared by different service providers making the funding of services easier	273	1.37	0.87	280	1.22	0.88
Outcome-Based	Has the team measured your satisfaction and your child's satisfaction with services in the past 3 months	306	1.36	0.91	-	-	-

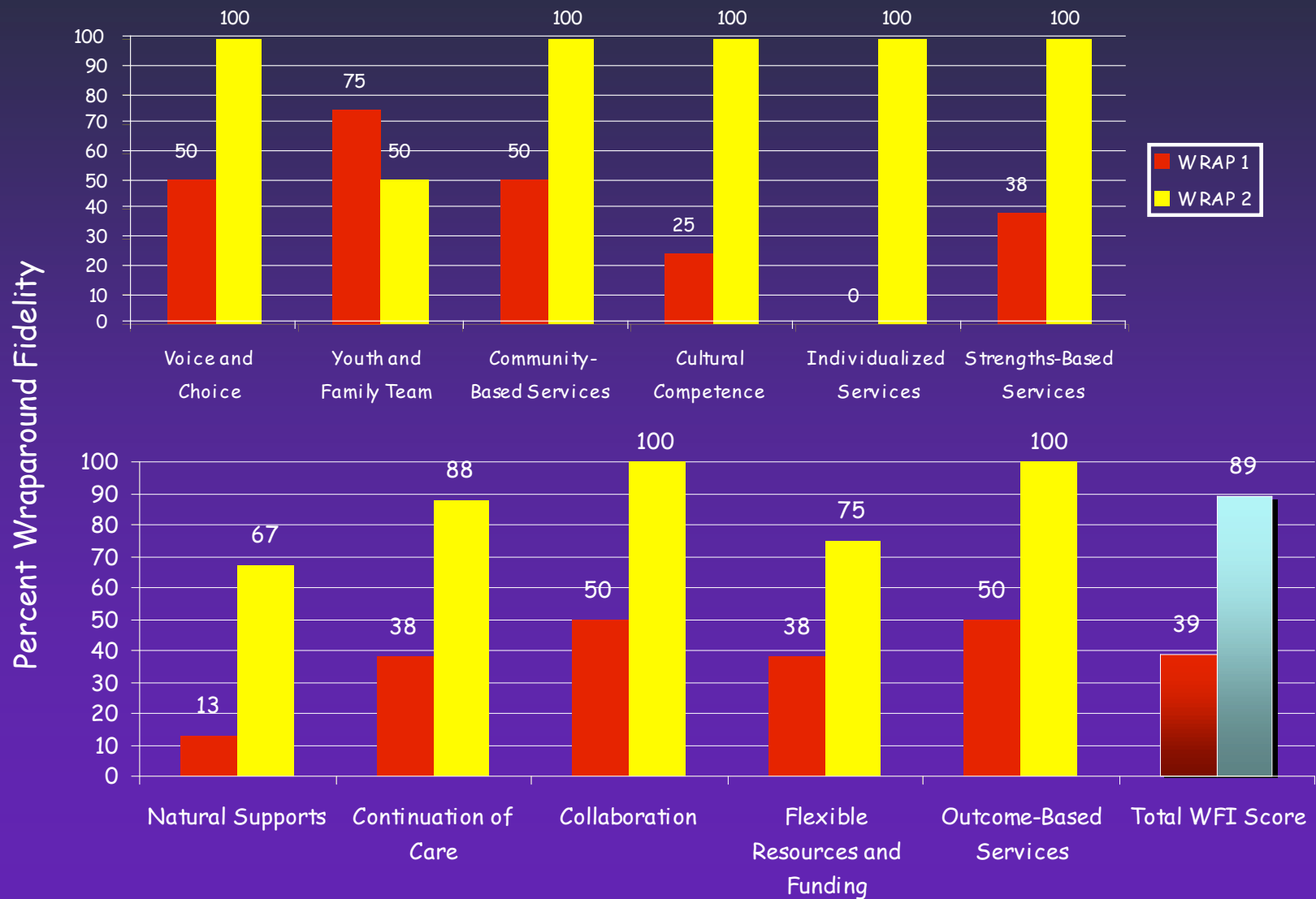
Common shortcomings in services

From patterns of WFI element and item scores

- ◆ Failing to incorporate full complement of important individuals on the individualized services team
- ◆ Failing to engage the youth in community activities, activities the youth does well, or activities that will allow him or her to develop appropriate friendships
- ◆ Failing to use family and community strengths to plan and implement services
- ◆ Failing to use natural supports, such as extended family members and community members
- ◆ Lack of flexible funds to help implement innovative ideas that emerge from the ongoing team planning process
- ◆ Inconsistent outcome & satisfaction assessment

Variation in Wraparound

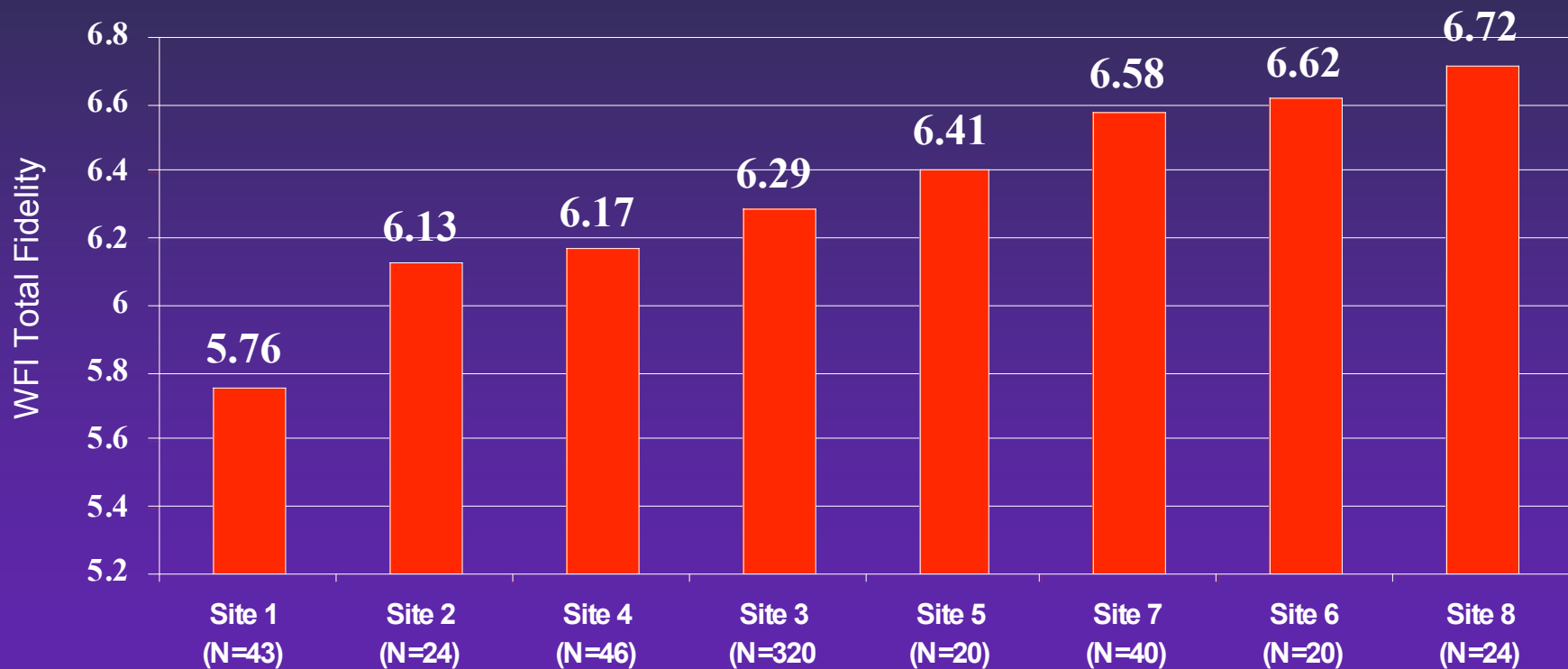
Karen's example: Two Wraps for one family



Variation across Wraparound sites

Total Fidelity Scores

For sites in pilot with $n > 20$ families assessed via WFI



Assessing program/system characteristics

Domains of the WFI-Program Administrator form

◆ General Site infrastructure

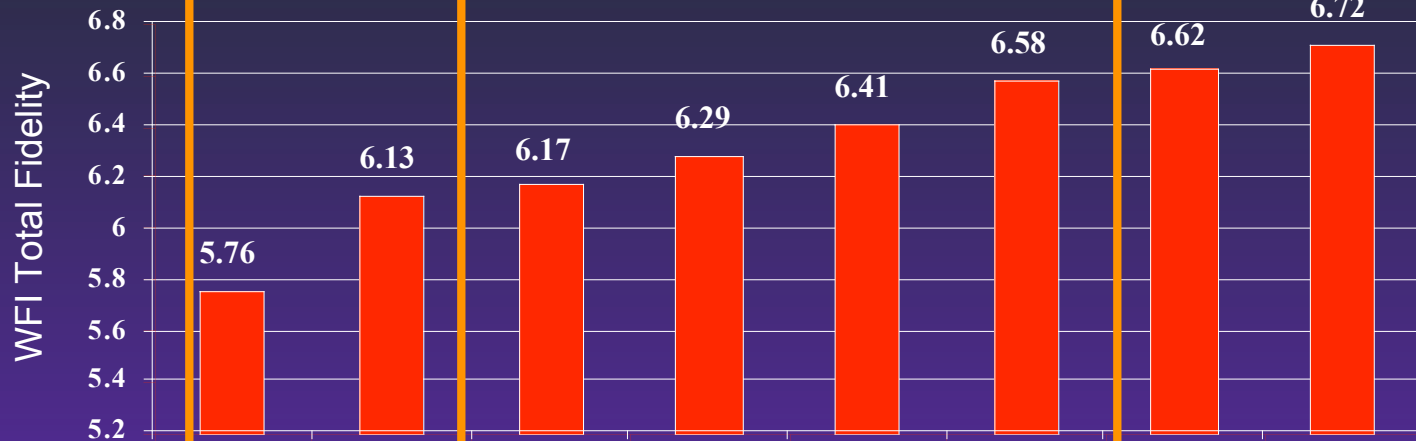
- Number of years the program has served families via Wraparound
- Number of families served
- Caseload of Resource Facilitators
- Staff turnover

◆ Program- & system-level adherence to Wraparound principles

- Interagency collaboration
- Pooled funding
- Natural supports
- Family-centered policies
- Flexible funding and supports
- Outcome measurement

Explaining Variation across sites

WFI Fidelity Scores w/program characteristics



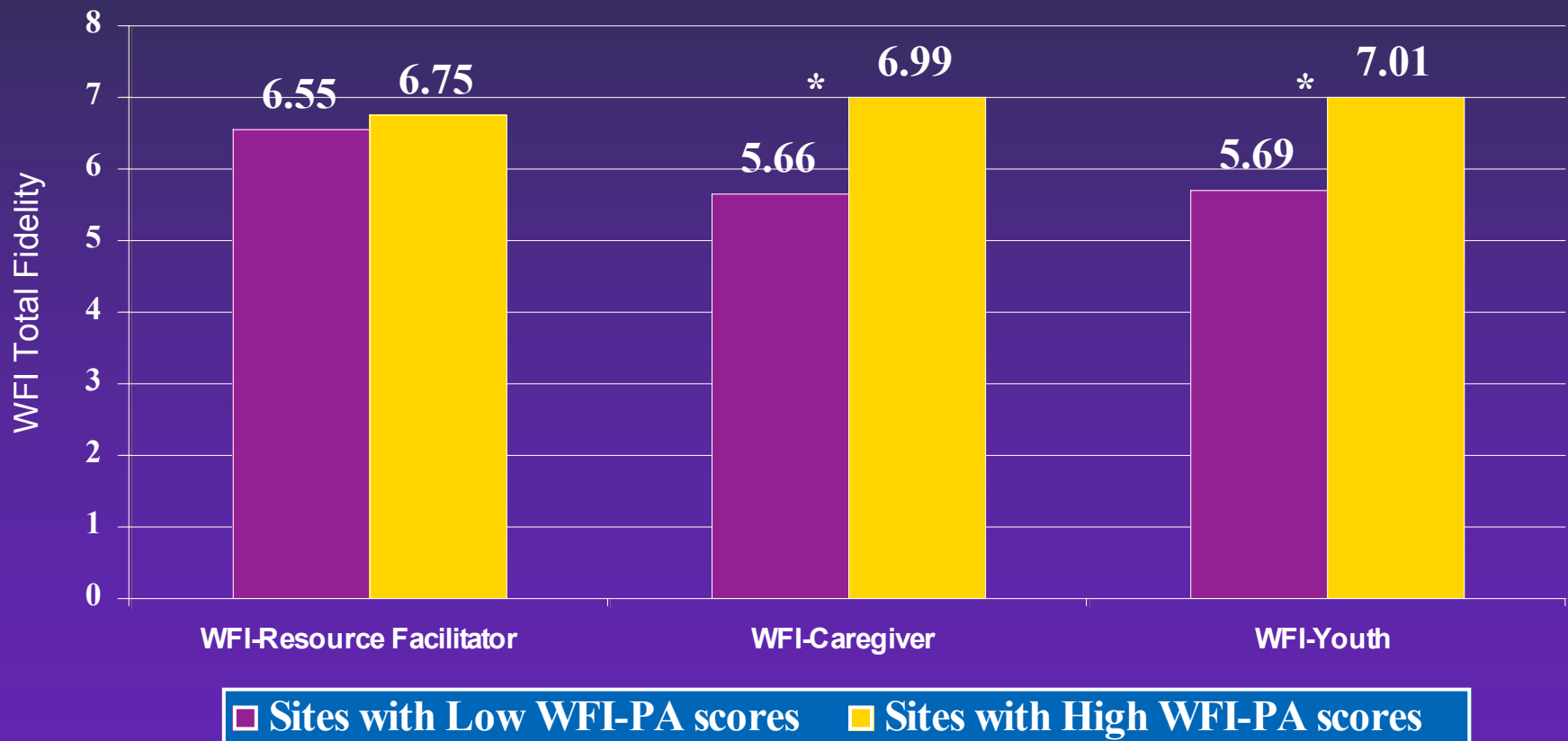
WFI-PA domains

- Program Longevity
- Low Caseload Size
- Low Staff turnover
- Interagency collab.
- Pooled funding
- Natural supports
- Family centeredness
- Fund/Serv.Flexibility
- Outcomes assessed
- TOTAL WFI-PA**

	Site 1 (N=43)	Site 2 (N=24)	Site 4 (N=46)	Site 3 (N=320)	Site 5 (N=20)	Site 7 (N=40)	Site 6 (N=20)	Site 8 (N=24)
Program Longevity	Y				Y	Y	Y	Y
Low Caseload Size		Y	Y	Y	Y			Y
Low Staff turnover			Y	Y		Y		
Interagency collab.	Y		Y	Y			Y	Y
Pooled funding					Y		Y	
Natural supports	Y			Y	Y	Y	Y	Y
Family centeredness		Y		Y		Y	Y	Y
Fund/Serv.Flexibility					Y	Y	Y	Y
Outcomes assessed					Y	Y	Y	Y
TOTAL WFI-PA	3	2	3	5	6	6	7	7

Differences in Overall WA Fidelity

For sites with low and high WFI-PA scores



* $p < .01$

Explaining Variation across sites

Predicting Total WFI scores from system/program characteristics

Step		Beta	t	Sig	R-sq
1	Program N years	.214	2.76	.006***	.08**
	N families served	.003	.496	.620	
	Average caseload	-.09.1	-3.29	.001***	
	Staff turnover rate	1.171	1.09	.310	
2	Program N years	.236	1.74	.084*	.10**
	Currently serving	.003	1.37	.171	
	Average caseload	-.122	-3.09	.002***	
	Staff turnover rate	.720	.339	.735	
	Pooled funding?	-.012	-.045	.964	
	Fam centered?	-.546	-1.11	.267	
	Flex funding?	.414	1.89	.060*	
	Outcome-Based?	.623	1.94	.054**	

***p<.001; **p<.01; *p<.1;

Overview of major findings

- ◆ Certain philosophical principles and prescribed provider and team behaviors are consistently difficult to achieve in Wraparound service delivery
- ◆ Even among self-selecting sites, adherence to philosophical principles varies significantly
 - Team/provider functioning for individual families
 - Program and system characteristics
- ◆ Program and system characteristics seem to predict adherence to Wraparound principles
 - However, further research be necessary to discern specific types of administrative and system characteristics, and specific effects on fidelity and outcomes

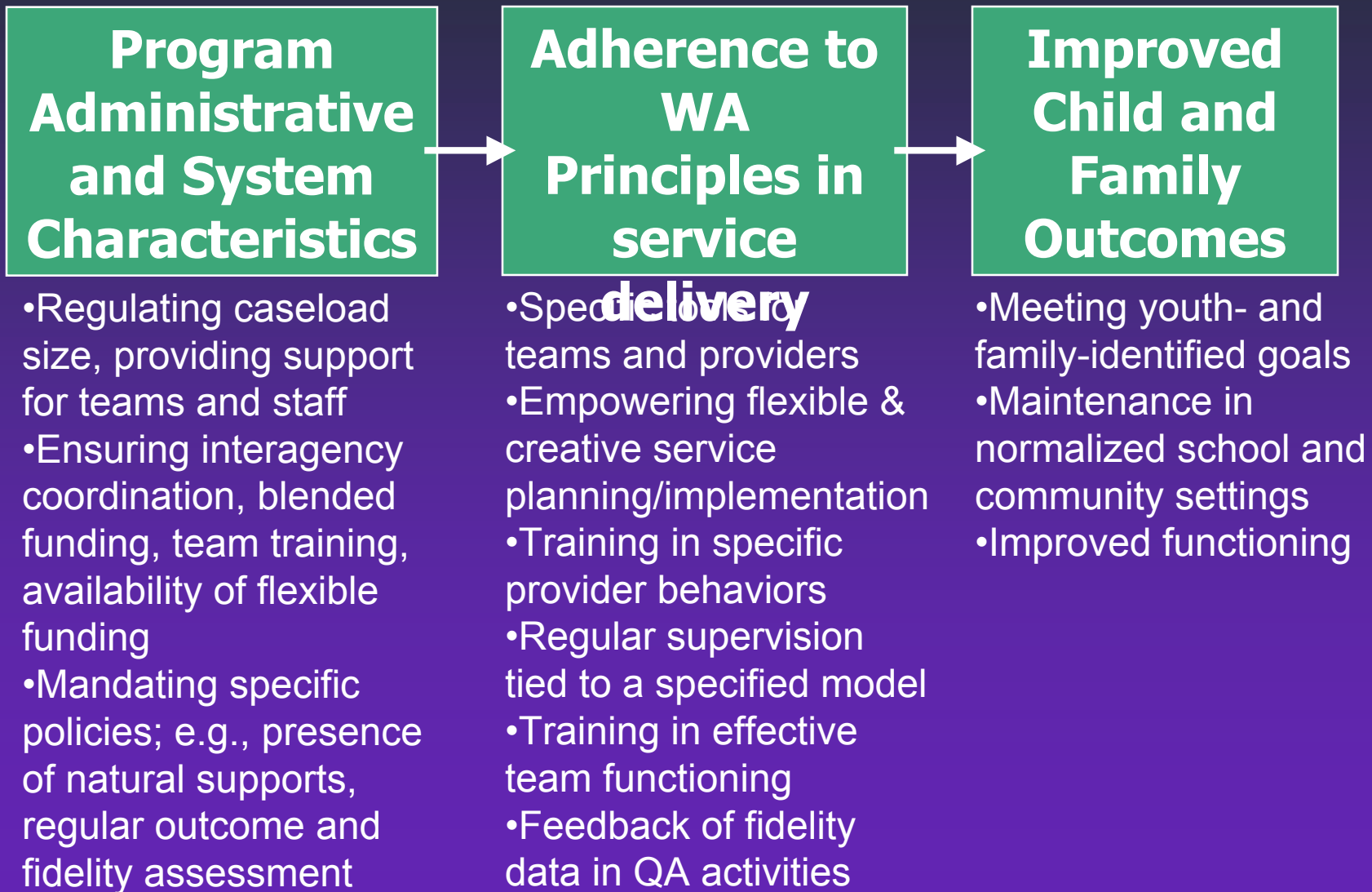
Implications

For service provision, policy and future research

- ◆ If full adherence to WA principles is desired, programs and systems must attend closely to them, and take measures to ensure fidelity
 - Training
 - Supervision
 - Program administration
 - Higher-order policy and system building
- ◆ Full adherence to philosophical principles may be facilitated by better definition and specification of the WA approach
 - Specific service delivery approaches for teams and providers
 - Guidelines or standards for programs and systems
- ◆ *More complete specification will also facilitate appropriate fidelity measurement and research that can evaluate factors in WA service provision that are most important to ensuring outcomes*

Emerging evidence

Surfacing factors that lead to outcomes



An agenda for continued progress

CURRENT:

- WA Elements and Practice Principles
- Training by national experts
- Local innovations

FUTURE:

- Well-described yet flexible model
- Incorporating tools and approaches piloted in local sites
- Intervention components based on evidence of effectiveness
- Training, QA, and fidelity assessment tied to model

Specific Program Administrative and System Characteristics

How to adhere to WA Principles in service delivery

Outcomes