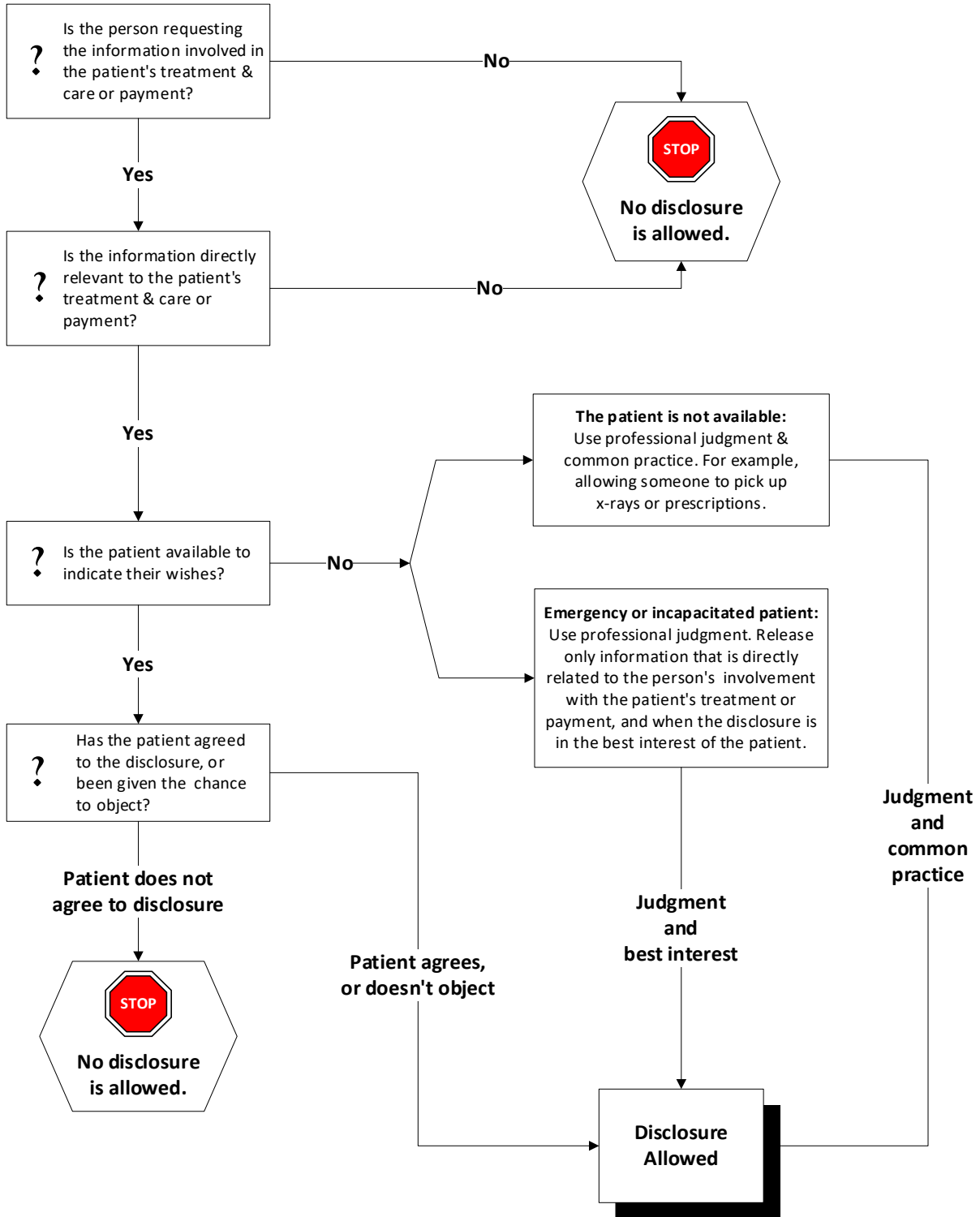


UW Medicine

Use & Disclosure of PHI for Involvement in Patient's Care and Notification Decision Tree



UW Medicine

Summary of Relevant Requirements: Use & Disclosure of PHI for Involvement in Patient's Care and Notification Table

	Family Member or Friend	Other Persons
Patient is present and has the capacity to make healthcare decisions	<p>Relevant PHI may be disclosed if the healthcare professional does one of the following:</p> <ol style="list-style-type: none"> 1. Obtains the patient's agreement. 2. Gives the patient an opportunity to object and the patient does not object. 3. Decides from the circumstances, based on professional judgment that the patient does not object to the disclosure. <p>Disclosure may be made in person, over the phone or in writing.</p>	<p>Relevant PHI may be disclosed if the healthcare professional does one of the following:</p> <ol style="list-style-type: none"> 1. Obtains the patient's agreement. 2. Gives the patient the opportunity to object and the patient does not object. 3. Decides from the circumstances, based on professional judgment that the patient does not object to the disclosure. <p>Disclosure may be made in person, over the phone or in writing.</p>
Patient is not present or is incapacitated	<p>Healthcare professional may disclose relevant PHI if s/he believes it is in the patient's best interest, based on his/her professional judgment.</p> <p>Disclosure may be made in person, over the phone or in writing.</p> <p>Healthcare professional may use professional judgment and experience to decide if it is in the patient's best interest to allow someone to pick up filled prescriptions, medical supplies, X-rays or other similar forms of health information for the patient.</p>	<p>Healthcare professional may disclose relevant PHI if s/he is reasonably sure that the patient has involved the person in the patient's care AND believes the disclosure is in the patient's best interest, based on his/her professional judgment. Healthcare professional may share only the PHI that is directly relevant to the person's involvement with the individual's care or payment.</p> <p>Disclosure may be made in person, over the phone or in writing.</p> <p>Healthcare professional may use professional judgment and experience to decide if it is in the patient's best interest to allow someone to pick up filled prescriptions, medical supplies, X-rays or other similar forms of health information for the patient.</p>