

Diabetes and Metabolism Seminar Series



DRC/NORC Annual Retreat

November 18, 2021, 9:30 am-4:30 pm PST

Full-Day Symposium [Register at: diabetesmetabseminars.com](https://diabetesmetabseminars.com)

- 9:30   **Opening Remarks and Updates from the DRC and NORC**
Steven Kahn, DRC Director
Ellen Schur, NORC Director
- 10:00   **Funding Opportunities from DRC, NORC and UWMDI**
Core directors: Sakeneh Zraika and Gregory Morton
- 10:05  **Meet the DRC Core: Cellular and Molecular Imaging**
Core director: Rebecca Hull
- 10:10  **DRC P&F Awardee: Kim Alonge, PhD**
Acting Instructor, Division of Metabolism, Endocrinology and Nutrition
Expanding the Role of Brain Extracellular Matrices: CNS Control of Energy Homeostasis Through Hypothalamic Perineuronal Nets
- 10:40 **Break**
- 10:50  **Meet the DRC Core: Vector and Transgenic Mouse**
Core director: Karin Bornfeldt
- 10:55  **Strom Graduate Awardee: Steven Hsu**
Ph.D. Candidate, Department of Metabolism, Endocrinology, and Nutrition
Pyroptosis, Diabetes and Atherosclerosis
- 11:15  **Meet the DRC Core: Quantitative and Functional Proteomics**
Core director: Tomas Vaisar
- 11:20  **DRC Core Highlight: Quantitative and Functional Proteomics**
Presenter: Laura den Hartigh
- 11.30-12.30 pm **Lunch Including Trainee Zoom Lunch with Dr. Hall**
- 12:30  **DRC/NORC State-of-the-Art Presentation: Kevin D. Hall, PhD**
Section Chief, Integrative Physiology Section
National Institute of Diabetes, Digestive and Kidney Diseases
We Are What We Eat? Effects of Diet, Calories, Carbs, and Quality

Diabetes and Metabolism Seminar Series



DRC/NORC Annual Retreat

November 18, 2021, 9:30 am-4:30 pm PST

Full-Day Symposium [Register at: diabetesmetabseminars.com](https://diabetesmetabseminars.com)

1:30



Meet the NORC Core: **Biostatistics**

Core director: Sarah Holte

1:35



New Investigator Award: **Jeffrey Rasmussen, PhD**

Assistant Professor, Department of Biology

Regulation of Diabetic Peripheral Neuropathy by Skin-Resident Immune Cells

2:05



Meet the NORC Core: **Clinical and Translational Research Services**

Core director: Ellen Schur

2:10



DRC P&F Award: **Luke Wander, MD**

Assistant Professor, Division of General Internal Medicine

Circulating miRNAs as Predictive Biomarkers of Beta-cell Treatment Response

2:40

Break

2:55



Meet the NORC Core: **Analytic & Metabolomic**

Core director: Andy Hoofnagle and Dan Raftery

3:00



NORC Core Highlight: **Analytic & Metabolomic**

Presenter: Johanna Lampe

3:30



Meet the NORC Core: **Energy Balance**

Core director: Gregory Morton

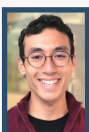
3:35



Meet the DRC Core: **Cell Function Analysis**

Core director: Sakeneh Zraika

3:40



DRC P&F Awardee: **Carlos Campos, PhD**

Research Assistant Professor, Division of Metabolism, Endocrinology and Nutrition

Viscerosensory Control of Feeding Behavior

4:10

Concluding Remarks