



# Inter-organ Communication in Metabolic Disease and its Complications

May 1, 2025, 9:00 am - 4:30 pm, Full Day Symposium

Center for Urban Horticulture 3501 NE 41st Street, Seattle, 98195

Free Parking Available to Public | This will be an in-person event with no remote option

Register at: [diabetesmetabseminars.com](https://diabetesmetabseminars.com)

9:00 **Opening Remarks**

9:10 **J. Ernie Blevins, PhD, Research Professor**

UW Medicine, Division of Metabolism, Endocrinology and Nutrition

*Effectiveness of Oxytocin and the Selective Glucagon-Like Peptide-1 Receptor Agonist, Semaglutide, as a Combination Therapy to Treat Obesity in Diet-Induced Obese Rodents*



9:40 **Maria Grant, MD, Professor**

University of Alabama, Department of Ophthalmology and Visual Science

*Inside Out Solutions: Gut Targeted Approaches to Treat Diabetic Retinopathy*



10:30 **Break**

10:50 **Clair Crewe, PhD, Assistant Professor**

Washington University Department of Cell Biology and Physiology

*The Surprising Functions of Adipocyte Extracellular Vesicles*



11:35 **Dennis Wang, MD, PhD, Assistant Professor**

UW Medicine, Division of Cardiology

*MitoEVs in Heart Failure: A New Perspective on Sterile Inflammation*



12:05 **Lunch**

1:30 **Matthew Potthoff, PhD, Professor**

The University of Oklahoma Health Sciences, Harold Hamm Diabetes Center

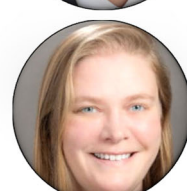
*FGF21: Stopping the Monster MASH*



2:15 **Megan Capozzi, PhD, Research Assistant Professor**

UW Medicine, Division of Metabolism, Endocrinology and Nutrition

*Islet-Liver Crosstalk in Hepatic Glycogen Metabolism*



2:45 **Break**

3:05 **Jarrad Scarlett, MD, PhD, Assistant Professor**

UW Medicine, Division of Gastroenterology and Hepatology

*Role of Brain Fibroblast Growth Factor 1 in the Regulation of Energy Homeostasis*



3:35 **Kristy Townsend, PhD, Associate Professor**

The Ohio State University, Department of Neurological Surgery

*Sensory Nerves in Adipose Tissues - Making Sense of an Overlooked Nerve Supply*



4:20 **Concluding Remarks**