

SOURCES

A HISTORY OF SEATTLE WATERFRONT WORKERS

A. Interviews

Name	Int. Yr.	Job	Date Interviewed
Ed Anderson	1945	Dispatcher	July 11, 1990
Lee Anderson	1953	Business Agent	July 21, 1987
Roy Anderson	1950	Slingman	March 31, 1987
Leonard Annabelle	1958	Linesman	October 14, 1988
W. Don Bass	1943	Grain Handler	April 14, 1987
Virgil Bauman	1921	Jitney Driver	August 8, 1987
Harvey Beauchamp	1942	Gear Locker	April 14, 1987
Harold Bjornson	1933	Foreman	July 28, 1987
Clayton Bliss	1957	Slingman	July 5, 1988
Jack Block	1953	Foreman	January 13, 1987
Dallas Bogert	1974	Welfare Officer	February 15, 1989
Hilmer Bokn	1945	Stevedore	June 7, 1987
Merle Carothers	1947	Slingman	July 14, 1987
Luis Castillo	1956	Supercargo	March 24, 1987
Delbert E. Castle	1957	Stevedore	November 18, 1986
Jack Cordray	1939	Bull Driver	February 17, 1987
Benny Craft	1927	Foreman	March 3, 1987
Philip Crawford	1944	Stevedore	February 24, 1987
Rosco Craycraft	1929	Slingman	November 24, 1986
Carl Christenson	1937	Dispatcher	October 14, 1988
Chester Critney	1946	Bull Driver	April 7, 1987
Earley Douglas	1931	Stevedore	November 24, 1986
Dewey Duggan	1923	Dispatcher	January 6, 1987
Monrad Dyroen	1932	Stevedore	March 21, 1989
William Esquibel	1947	Trucker	January 6, 1987
Wilfred Fairbanks	1937	Stevedore	November 24, 1986
William Fisher	1950	Slingman	July 5, 1988
Gordon Fox	1934	Bull Driver	November 18, 1986
Raymond Fox	1939	Dispatcher	June 9, 1988
Edward Freeman	1950	Labeler	July 21, 1987
Leo Gacek	1935	Stevedore	March 19, 1987
Herb Goodman	1935	Bull Driver	September 22, 1987
Hector Goulet	1931	Stevedore	November 18, 1986
Richard Haverty	1930	Stevedore	November 30, 1986
Ralph Heino	1957	Trucker	March 24, 1987
Andrew Jenkins	1937	Bull Driver	July 7, 1987
Frank Jenkins	1921	Winchman	June 6, 1972
Martin Jugum	1942	Slingman	November 18, 1986
William J. Lacey	1950	Gear Locker	February 24, 1987
Carl Lotz	1933	Winch	April 21, 1987
Emil LeMay	1953	Checker	January 20, 1987

Name	Init. Yr.	Job	Date Interviewed
Ernest McAuliff	1936	Gear locker	May 12, 1987
William McFarlane	1938	Dispatcher	July 5, 1988
John Mahoney	1950	Seaman/Winchman	July 21, 1987
Shaun Maloney	1950	Winchman	March 24, 1987
Rudolph Martinez	1950	Crane Operator	March 21, 1989
E. B. Matheson	1937	Checker	May 12, 1987
Arthur Mink	1957	Checker	July 5, 1988
Warren Monie	1966	Checker	May 19, 1988
Waino A. Moisio	1933	Winchman	February 7, 1987
E. R. Moork	1950	Stevedore	July 21, 1987
George Munko	1934	Stevedore	February 11, 1988
Burt Nelson	1932	Stevedore	January 13, 1987
Russell Ness	1950	Strad driver	July 28, 1987
George H. Niemi	1934	Stevedore	July 21, 1987
Phil Poth	1933	Stevedore/Lawyer	August 3, 1987
Lawrence Prong	1944	Bull Driver	July 3, 1987
LeRoy Richwine	1953	Checker	April 28, 1987
Gunnstein Rystad	1943	Stevedore	December 16, 1986
Albert G. Schutt	1926	Foreman	December 11, 1987
Harvey Simmons	1934	Stevedore	December 29, 1987
James L. Sloan	1941	Winchman	July 5, 1988
James Speliacy	1945	Gear Locker	December 9, 1986
Harold Spurrell	1934	Gear Locker	April 7, 1987
Edson Stallcop	1954	Winchman	November 18, 1986
Peter Starkovich	1950	Slingman	January 6, 1987
Bennie H. Sterns	1953	Stevedore	August 11, 1988
Robert E. Swanson	1945	Bull Driver	February 3, 1987
Orie Swartz	1926	Deckman	April 7, 1987
Terry Sweeney	1953	Checker	November 18, 1987
Everett Towell	1927	Slingman	September 25, 1987
Clifford Vinje Sr.	1950	Stevedore	April 7, 1988
John Waddell	1960	Welfare Officer	February 15, 1989
William Walker	1917	Foreman	January 20, 1987
Harry Wivart	1939	Winchman	May 6, 1987
Norman Wivart	1939	Stevedore	May 6, 1987
Gordon S. Wylie	1934	Foreman	May 6, 1987
Jack Wylie	1936	Bull driver	February 24, 1987

B. Special Interviews

Name	Init. Yr.	Job
Chester Barker	1929	Tacoma Longshoreman
Lee Barker	1918	Tacoma Longshoreman
Elmer Barth	1922	Port Angeles Longshoreman
Dave Beck	1917	Laundry Driver and Organizer
Frank Brewster	1915	Team Driver and President 174
Frances Daffron		Longshoreman's Wife
Elizabeth Dawson		Waterfront Employers' History

Special Interviews (Continued)

Name	Init. Yr.	Job
Fritzie Dyroen		Longshoreman's Wife
Joan Fox		Charter Member, Longshore Auxiliary
Vivian George		Longshoreman's Wife
Thomas "Teddy" Gleason	1917	President Emeritus, ILA
Ellen Goodman		Longshoreman's Wife
Renee Jenkins		Longshoreman's Wife
Craig Johnson		Pacific Maritime Association Area Director
Esther Moisio		Longshoreman's Wife
John Now	1916	Tacoma Longshoreman
James Robbins		Port Angeles Longshoreman
Jack Spurrell	1933	Raymond Longshoreman
Morris Thorsen	1925	Tacoma Longshoreman
T. A. Thronson	1929	Tacoma Longshoreman
Carl Weber		Griffiths & Sprague Manager
Amy Williams		President, Local 19 Auxiliary

C. Local 19 A and B Longshoremen Interviews

James Burns	Lineman	July 5, 1988
Charles Dean Jr.	Stevedore	April 21, 1987
James Dean	Business Agent	February 9, 1987
Burton Danielson	Lasher	July 5, 1988
Richard Hopper	Bull Driver	July 5, 1989
Pat Vukich	President	February 17, 1990
William Urlevich	Trucker	July 5, 1988
Ernest Williams	Crane Operator	July 5, 1988

D. Photographic Collections

Elizabeth Dawson	1891-1942
Jean Gundlach	1934-1980
Andrew & Renee Jenkins	1909-1988
Department of Labor, Washington, D. C.	1885-1916
ILWU Local 19	1889-1988
Museum of Science and Industry	1871-1988
National Maritime Museum, San Francisco	1890-1905
Pacific Maritime Association	1931-1988
Port of Seattle	1874-1988
Richard's Studio	1887-1966
Seattle Times Library	1912-1952
University of Washington Special Collections	1884-1931
Washington State Historical Society Museum Library	1929-1979

E. Primary Written Sources

Alphabetical List of Longshoremen and Truckers Registered at the Waterfront Dispatching Hall, May 1934. ILWU Local 19 Archives.

Ames, E. A. *Puget Sound Stevedoring Company Files, 1916-1928* University of Washington Manuscripts Department.

Andrews, John B. *Correspondence Concerning Federal Legislation for Longshore Compensation, 1923-1927*. Taminent Library.

Bridges, Harry R. *Harry Bridges Files 1931-1976*. ILWU Library.

Bridges, Robert. Robert Bridges Scrapbooks 1888-1921. University of Washington Special Collections.

Burns, Elsie Lindskog. Waterfront Employers' Union Scrapbook 1934-1948. Pacific Maritime Association (PMA) Files.

Cantelow, H. C. *Chronological History of the Dealings of Seattle Waterfront Employers Union with the International Longshoremen's Association 1908-1920*. PMA Files.

City of Seattle Archives 1890-1979. City Hall

Dawson, W. C. *Brief History of the Waterfront Employers of Seattle 1908-1936*. PMA Files.

Dawson, W. C. Scrapbooks 1891-1942. Grace Elizabeth Dawson, Port Townsend.

Farmer, Albert. *The Diary of A Longshore Dispatcher, 1928-1934*. University of Washington Special Collections.

Foisie, Frank P. *Final Report of The Temporary Joint Committee Representing Longshoremen and Truckers, and Employers on the Seattle Waterfront*. February 26, 1921. PMA Files.

_____. *Original Records of Reports to Employment Bureau Committee; Central Hiring & Dispatching; Joint Employment Committee from May 1920 Strike to August 1921 by Which Time the Surplus Was Eliminated*. PMA Files.

_____. *A Study of Longshore Earnings in Washington Ports In Relation to Determining Compensation Under the Longshoremen's and Harbor Workers' Compensation Act*. Submitted in Hearings Before Deputy Commissioner William A. Marshall, 14th District U. S. Employees Compensation Commission. September 10, 1930. PMA Files.

Gettings, William. *Gettings Files. 1934-1967*. ILWU Library. San Francisco.

Investigation by the Commissioner of the Bureau of Labor Statistics into the Condition of Men Working on the Waterfront and on Board of Pacific Coast Vessels. Sacramento. 1887. Bancroft Library.

Industrial Workers of the World File. University of Washington Manuscripts Division.

Industrial Workers of the World File. Washington State Library.

King County Archives 1885-1987.

King County District Court Cases: 1886-1934. King County Courthouse.

Noonan, George. *History of the Seattle Waterfront Unions 1886-1905*. Tacoma Public Library.

_____. *History of Tacoma Waterfront Unions 1886-1905*. Tacoma Public Library

OBITUARY: SHELVEY DAFFRON July 6, 1934. ILWU Local 19 Files.

Peterson, Albin M. *Autobiography of Longshoreman Albin Manfred Peterson*. 1977. ILWU Local 19 Files.

Plant, T. G. *1934-1939 Pacific Coast Longshore History*. University of California Social Science Library.

Port Blakely Mill Company Correspondence with Rothschild & Company, 1877-1905. With Renton, Holmes & Company of San Francisco, 1861-1905. University of Washington Manuscript Collections.

Reichl, Frank E. *Membership Files Tacoma Longshoremen, 1909-1958*. ILWU Local 23 Archives

Roosevelt, Franklin D., Official File 407B, *Pacific Coast Longshore Strike 1934*. Franklin D. Roosevelt Library. (FDR).

Roosevelt, Franklin D. Official File 716, *National Labor Relations Board, 1934*. FDR Library.

Roosevelt, Franklin D. Official File 1750, *Harry Bridges*. FDR Library.

Standard Practice Handbook Adopted by the Joint Organization Through Employee Representation of Longshoremen and Truckers. Revised October 1, 1922.

Washington State Archives June 15, 1886-December 31, 1986. Capitol Campus, Olympia.

Weaver, Jack. *Jack Weaver File*. 1902-1942. ILWU Library

Wells, Hulet. *I Wanted Work*. Unpublished Autobiography. University of Washington Manuscripts Division.

F. Minute Books

Joint Employment Committee of Longshoremen, Truckers and Waterfront Employers 1920-1921. PMA Files.

Joint Executive Committee of Longshoremen, Truckers and Seattle Waterfront Employers 1921-1933. PMA Files

Joint Marine Strike Committee Minutes, 1934. Otilie Markholt Collection.

Joint Northwest Strike Committee Minutes May 24-September 13, 1934. Otilie Markholt Collection.

Northwest Waterfront Employers Minutes October 8, 1918- May 6, 1925. PMA Files.

Portland, Oregon, Longshore Minutes, August 29, 1901-September 3, 1919. ILWU Local 8 Library.

Sailors' Union of the Pacific Minutes of Meetings Held at Headquarters San Francisco, California, January 7, 1907-April 11, 1910. Oregon State Historical Society Museum Library.

Seattle Longshore Minute Book I, July 2, 1918-June 3, 1919.

Seattle Longshore Minute Book II, February 6, 1923- April 30, 1931.

Seattle Longshore Minute Book III, May 7, 1931- August 2, 1934.

Seattle Longshore Minute Book IV, August 16, 1934- December 19, 1940. All Minutes Books are in ILWU Local 19 Archives.

Tacoma Central Labor Council Minutes, January 9, 1906-March 15, 1918. Tacoma Public Library.

Tacoma Trade Council Minutes, September 1, 1892-January 2, 1906. Tacoma Public Library.

Waterfront Employers Minute Book I, January 26, 1925- December 30, 1934. PMA Files.

Western Central Labor Union Minutes, August 5, 1891- September 20, 1905. University of Washington Manuscripts Division.

G. Proceedings

Proceedings of the Annual Conventions of the Longshoremen's Union of the Pacific, 1908-1909. Otilie Markholt Collection.

Proceedings of the Annual Conventions of the Pacific Coast Branch ILM&TA, 1902-1904. Otilie Markholt Collection.

Proceedings of the Annual Conventions of the Pacific Coast District ILA, 1910-1920 1922-1935. Otilie Markholt Collection.

Proceedings of the Annual Convention of the Washington State Federation of Labor, 1919. University of Washington Library.

Proceedings of the Central Labor Council of Seattle and Vicinity, March 3, 1915-December 18, 1934. University of Washington Manuscripts Division.

Proceedings of International Longshoremen's Association Annual Conventions, 1899-1935. University of Washington Microfilms Room.

Proceedings of the National Longshoremen's Board, Consisting of Rt. Rev. Edward J. Hanna (The Chairman), O. K. Cushing, Esq. and Edward F. McGrady Esq., Sitting as a Board of Arbitration to Arbitrate Controversies between Water Front Employers and International Longshoremen's Association, Local 38, of the Pacific Coast District, volumes 1-28. University of California at Berkeley Graduate Library.

H. Annual Reports

Port of Seattle Annual Reports 1905-1914. 1916-1935. City of Seattle Archives.

Seattle Port Warden's Annual Reports: 1905-1914, 1916-1919, 1925, and 1930. City of Seattle Archives.

I. Government Publications

Annual Reports of the United States Commissioner of Labor 1901-1980. Department of Labor Library. Washington, D.C.

Biennial Reports of the Bureau of Labor of Washington State, 1901-1919. Washington State Library.

Biennial Reports of the Department of Labor and Industries, 1920-1935. Washington State Library.

King County Auditor's Censuses: 1883, 1885, & 1887. Tacoma Public Library

Peterson, Florence. *Strikes in the United States. 1880-1936*. United States Department of Labor Bureau of Labor Statistics. Washington, D. C. 1937. Department of Labor Library. Washington D.C.

Stern, Boris. *A Report on Longshore Labor Conditions in the United States and Port Decasualization*. Washington, D. C. November 10, 1933. Department of Labor Library. Washington D.C.

Cargo Handling and Longshore Labor Conditions, United States Department of Labor, Bureau of Labor Statistics, Bulletin 550. February 1932. Department of Labor Library. Washington D.C.

Supreme Court of the United States (Washington v. Dawson & Company 1924), 264 U. S. 219, 44 S. Ct. 302. University of Puget Sound Law Library.

Supreme Court of the United States (International Stevedoring Company v. Haverly 1926) 272 U. S. 50 S. Ct. 19. University of Puget Sound Law Library.

United States Army. War Department. Intelligence Office. Military Intelligence Reports: Surveillance of Radicals, 1917-1941. Taminent Library.

United States Bureau of Labor Bulletin 456. 1928. Hearings on Longshoremen's & Harbor Workers Compensation Act. Department of Labor Library. Washington D.C.

United States Bureau of Labor Bulletin 485. 1929. Hearings on Longshoremen's & Harbor Workers. Department of Labor Library. Washington D.C.

United States Department of Commerce. Bureau of the Census. 1976. *Historical Statistics of the United States Colonial Times to 1970. Detailed Occupation Data of the Economically Active Population 1900-1980*, Department of Labor Library. Washington D.C.

J. Secondary Sources

Bernstein, Irving. *Turbulent Years: A History of the American Worker, 1933-1941*. Houghton Mifflin. Boston 1970.

Buchanan, Roger. *Dock Strike: History of the 1934 Waterfront Strike in Portland, Oregon*. The Working Press. Everett, Washington. 1975.

Burke, Padraic. *A History of the Port of Seattle*. Seattle, Washington. 1975.

Cox, Thomas R. *Mills and Markets A History of the Pacific Coast Lumber Industry to 1900*. University of Washington Press. Seattle 1977.

Deaton, Mary. *The Hungry Port*. Unpublished Manuscript.

Eliel, Paul. *The Waterfront and General Strikes of San Francisco 1934: A Brief History*. Industrial Association of San Francisco. 1934.

Friedheim, Robert L. *The Seattle General Strike*. The University of Washington Press. Seattle. 1964.

Gates, Charles M. Editor. *Readings in Pacific Northwest History. Washington 1790-1895*. University Bookstore. Seattle. 1941.

_____. *A Historical Sketch of the Economic Development of Washington Since Statehood. Pacific Northwest Quarterly*. Volume 39#3. July 1948. pp. 214-232.

Gilmore, Grant and Black, Charles L. *The Law of Admiralty*. The Foundation Press. Second Edition. Mineola, New York. 1975.

ILWU. *The I.L.W. U. Story: Three Decades of Militant Unionism*. ILWU Information Department. San Francisco. 1963.

Kimeldorf, Howard and Regensburger, William. *Insurgent Workers: Studies of the Origins of Industrial Unionism on the East and West Coast Docks and in the South During the 1930s*. Institute of Industrial Relations, University of California, Los Angeles. 1987.

Lovell, John. *Stevedores and Dockers. A Study of Trade Unionism in the Port of London, 1870-1914*. McMillan. 1969.

Markholt, Otilie. *Maritime Unionism*. Three volumes. Unpublished manuscript.

Meany, Edmond S. *Vancouver's Discovery of Puget Sound Portraits and Biographies of the Men Honored in the Naming of Geographic Features of Northwestern America*. Third Edition. Binford & Mort. Portland Oregon. 1957.

Nesbit, Robert C. *He Built Seattle: A Biography of Judge Thomas Burke*. University of Washington Press, Seattle. 1961.

Rosenberg, Daniel. *New Orleans Dockworkers: Race, Labor, and Unionism, 1892-1923*. State University of New York Press. Albany, New York. 1989

Quin, Mike. *The Big Strike*. International Publishers, New York. 1979.

Russell, Maude. *Men Along the Shore*. Brussel & Brussel, Inc. New York, N. Y. 1969.

Sayre, J. Willis. *The Early Waterfront of Seattle*. The Shorey Book Store. Seattle. 1971.

Thompson, Fred W. & Murfin, Patrick. *The I.W.W. Its First Seventy Years 1905-1975*. Published by Industrial Workers of the World. Chicago Ill. 1974.

K. Newspapers and Journals

Commonwealth. July 26, 1916-February 14, 1917. University of Washington Microfilm Room.

Coast Seamen's Journal 1900-1908. Otilie Markholt Collection.

Daily Call, July 28, 1917-April 22, 1918. University of Washington Microfilm Room.

Everett Labor Journal, January 7, 1909-November 12, 1937. University of Washington Microfilm Room.

The Industrial Worker, Seattle, Washington. April 1, 1916-May 4, 1918. April 25, 1919-February 23, 1924. Issues Missing. University of Washington Microfilm Room.

The Longshoremen, November 1911-July 1919. United States Department of Labor Library, Washington, D. C.

[Tacoma] *Labor Advocate*. February 19, 1915-September 15, 1977, United States Department of Labor. Tacoma Public Library, 1918-1934.

The Longshoremen's Journal, Christmas 1928-March 1937. Department of Labor Library, Washington, D. C.

Marine Digest, September 9, 1922-December 30, 1934. University of Washington Special Collections.

Pacific Maritime Review, April 1904-December 1918. Seattle Public Library.

Railway and Marine News, 1909, 1916, 1917, 1918, 1919, 1920, 1934, and 1935. Seattle Public Library.

Seattle Daily Times, January 1, 1886- November 30, 1886. Washington State Library.

The Seattle Longshore Log, November 1922-July 1925. United States Department of Labor Library, Washington, D. C.

Seattle Press, January 1, 1886- November 30, 1886. Seattle Times Library.

Post-Intelligencer, January 1, 1885-December 31, 1921. Washington State Library.

Seattle Times, January 1, 1917-December 31, 1987. Seattle Times Library.

Seattle Union Record, February 20, 1900 -January 31, 1928. Washington State Library.

Socialist Voice, March 4, 1911-June 22, 1912. Washington State Library.

Socialist World, July 14, 1917-March 23, 1918, University of Washington Microfilms Room.

Victoria British Columbia *Daily Colonist*, January 1, 1886- December 31, 1887. Vancouver Public Library.

Voice of the Federation, March 25, 1933-October 9, 1936. University of Washington Microfilm Room.

Washington Standard, January 1, 1883-December 12, 1883. University of Washington Microfilm Room.

West Coast Trader, February 1, 1896-March 2, 1914. Tacoma Public Library.

L. Articles

Markholt, Otilie. *Reorganization of the Pacific Coast Longshoremen, 1929-1933*. Paper Delivered at the 1988 Annual Meeting of the Pacific Northwest Labor History Association.

Peters, Paul. *Dockwollpers*, *American Mercury* XX, July 1930. pp. 319-326.

Poole, Ernest. *The Ship Must Sail on Time*, *Everybody's Magazine*, XIX, August 1908 pp. 176-186.

Squires, Benjamin M. *The National Adjustment Commission*, *Journal of Political Economy*, XXIX, July 1921, pp. 543-550.

Waterfront Workers Federation. *The Longshoremen's Strike. A Brief Historical Sketch of the Strike Inaugurated on June 1, 1916, in Pacific Coast Ports of the United States*. Compiled and published by the Waterfront Workers' Federation. San Francisco, California. August 23, 1916.

M. Theses

Armstrong, James Chester. *A Critical Analysis of Cargo Handling Cost in the Steamship Industry*. Master of Arts Thesis. University of California. Berkeley. 1946.

Brown, Giles T. *The Admiral Line and Its Competitors: The Zenith and Decline of Shipping Along the Pacific Coast 1916-1936*. Doctoral dissertation. Claremont Graduate School. 1948.

Fast, Lisette Emery. *The Efficiency of Cargo Handling in Relation to the Decasualization of Longshore Labor on the Seattle Waterfront*. Master of Business Administration Thesis. University of Washington. 1921.

Finger, John R. *Henry L. Yesler's Seattle Years, 1852-1892*. Doctoral dissertation. University of Washington. 1972.

Gillingham, Paul. *The Early History and Development of Industrial Relations in the West Coast Longshore Industry 1919-1934*. Master of Arts Thesis. University of Washington. 1970.

Jones, Gordon. *Longshore Unionism on Puget Sound*, Master of Arts Thesis. University of Washington. 1942.

Liebes, Richard Alan. *Longshore Labor Relations on the Pacific Coast, 1934-1942*. Doctoral dissertation. University of California. Berkeley. 1942.

MacDonald, Alexander Norbert. *Seattle's Economic Development 1880-1910*. Doctoral dissertation. University of Washington, 1959.

Moe, Ole Kay. *An Analytical Study of the Foreign Trade Through the Port of Seattle*. Master of Business Administration Thesis. University of Washington. 1932.

Pitts, Robert Bedford. *Organized Labor and the Negro in Seattle*. Master of Arts Thesis. University of Washington. 1941.

Saltvig, Robert Donald. *The Progressive Movement in Washington*. Doctoral dissertation. University of Washington. 1966.

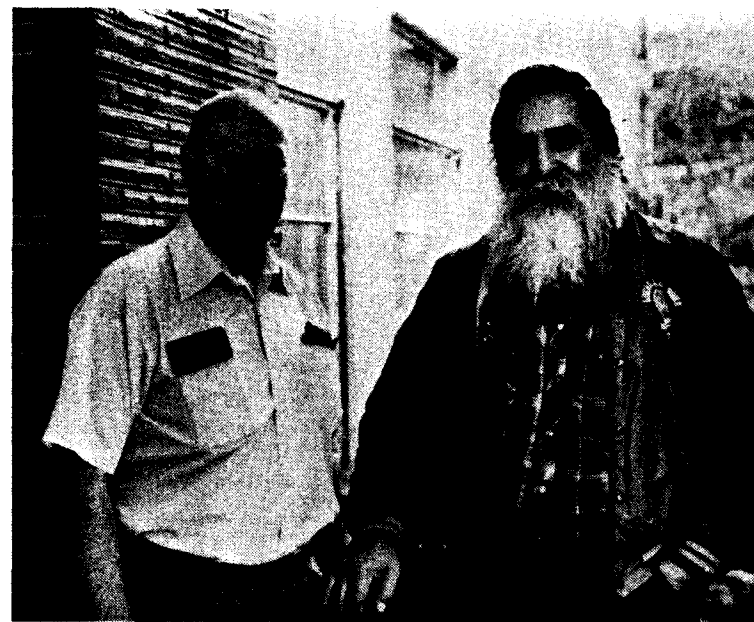
Thompson, Margaret Jane. *Development and Comparison of Industrial Relationships in Seattle*. Master of Business Thesis. University of Washington. 1929.

Watt, John R. *Introduction to the Economic and Labor History of Western Washington*. Master of Arts Thesis. University of Washington. 1942.

N. Bibliographic and Data Aids

Dembo, Jonathan. *An Historical Bibliography of Washington State Labor and Laboring Classes*. University of Washington. Seattle. 1978.

Schwartz, Carol. *The 1934 Pacific Coast Maritime Strike: A Bibliography and Description of the Materials at the International Longshoremen's Library*. ILWU Library. San Francisco, 1989.



*Project Directors - Terry Sweeney (left) and David Vigil Sr.
Photo by Gayle Rieber*