

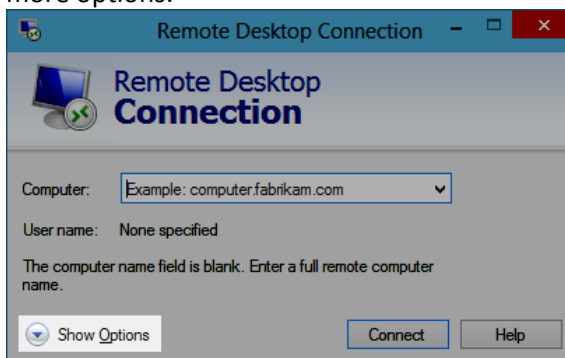
Remotely Accessing a Work PC from Windows

Department of Medicine IT Services

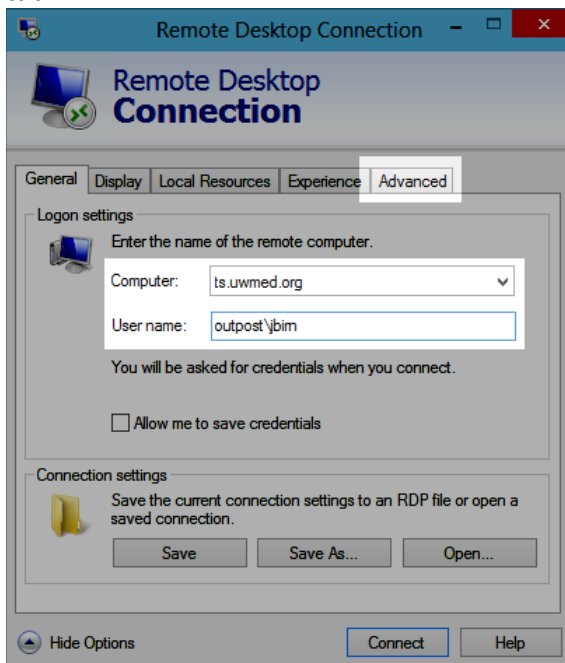
Updated 01/26/2015

With the use of the Remote Desktop Gateway service provided by Department of Medicine IT Services it is possible to connect to a campus computer via Remote Desktop Connection (RDC) without the need for a separate VPN connection. These instructions document how to configure RDC to use this gateway service.

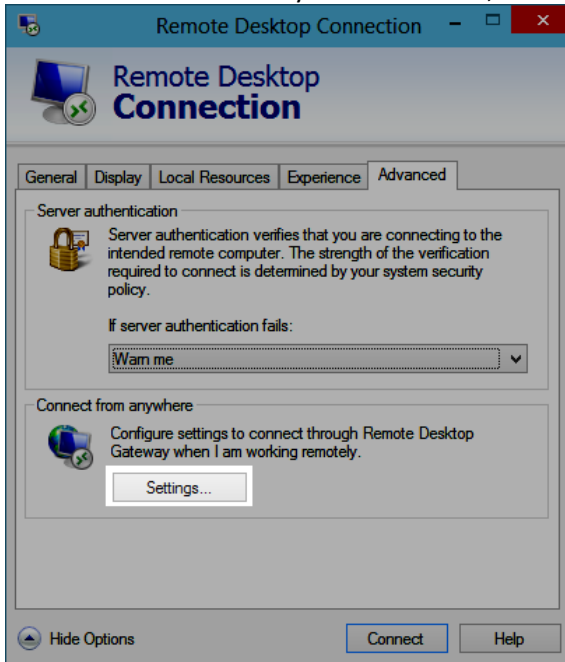
1. Launch Remote Desktop Connection. It can be found in the Start Menu under **All Programs -> Accessories -> Remote Desktop Connection**.
2. On the RDC window, click the **Show Options** button. The window will expand to a larger size with more options.



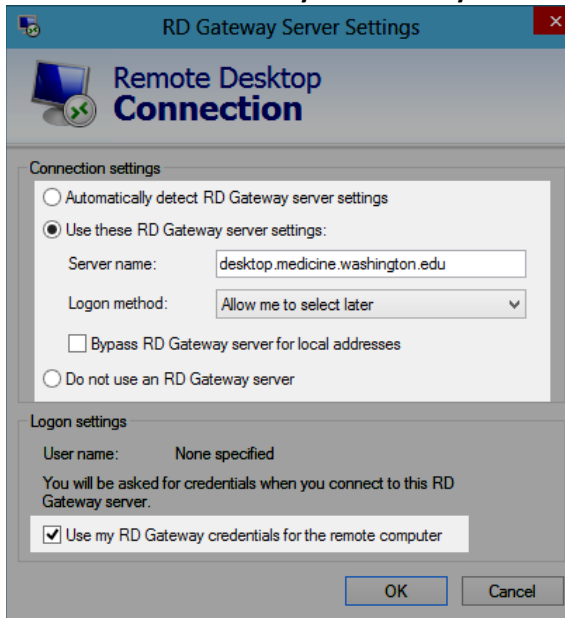
3. Enter the name of the computer you are connecting to in the **Computer** field (if you are unsure of what to enter, contact the help desk). In the **User name** field, enter your Outpost username prepended with **outpost** (so your username will read **outpost\username**). Click on the **Advanced** tab.



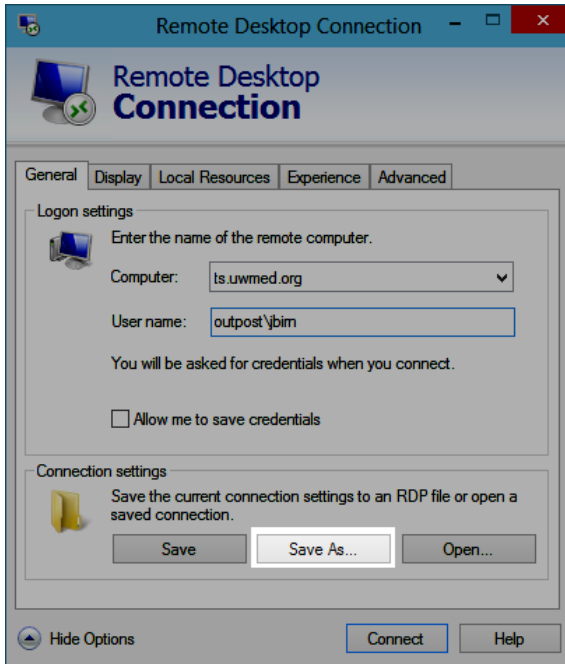
4. In the “Connect from anywhere” section, click **Settings**.



5. Select the option for **Use these RD Gateway server settings**. In the “Server name” box enter **desktop.medicine.washington.edu** and uncheck **Bypass RD Gateway server for local addresses**. Check the box for **Use my RD Gateway credentials for the remote computer** and click OK.



- Click on the “General” tab to return to where the computer and user names were entered. Under the “Connection settings” section, click “Save As”. This will prompt you to save a shortcut file for this connection.



- Choose a location for the shortcut (such as your desktop) and a name (such as “Terminal Server” or “Work Desktop”) and save the shortcut. Then, close out of the Remote Desktop Connection window.

You can now use the shortcut that was created to connect directly to your desktop. As you connect the login screen will prompt you that your credentials will be used for the RD Gateway Server and the remote computer. Accept any certificate warnings that you may see.

