

## The Underserved Pathway

The Underserved Pathway helps prepare future physicians to care for vulnerable and underserved populations. The Pathway engages students in three educational avenues: mentoring, developing a foundation of knowledge, and a variety of real-world experiences. Students can customize their pathway to meet their own educational goals and interests.

### Pathway Benefits:

- Preclinical, clinical, and service learning experiences with underserved and vulnerable populations.
- Guidance and support from an Underserved Pathway mentor.
- Unique web-based curriculum, not typically covered in medical school, to build a knowledge base about issues that affect underserved and vulnerable populations.
- Dedicated Underserved Pathway advisors, including faculty physicians and a program coordinator.
- Opportunities to collaborate with other students interested in careers working with underserved populations.
- Certificate of Completion upon successful completion of Pathway requirements, given at graduation.
- Acknowledgment in Hooding Ceremony program.
- Recognition in Medical Student Performance Evaluation (MSPE/Dean's Letter).



Students from the "Students in the Community" project advocate for better health care for the underserved.

### Quick Links:

[Student Web Modules](#)

[UP Tracker](#)

[UP Introduction and Requirements Webinar](#)

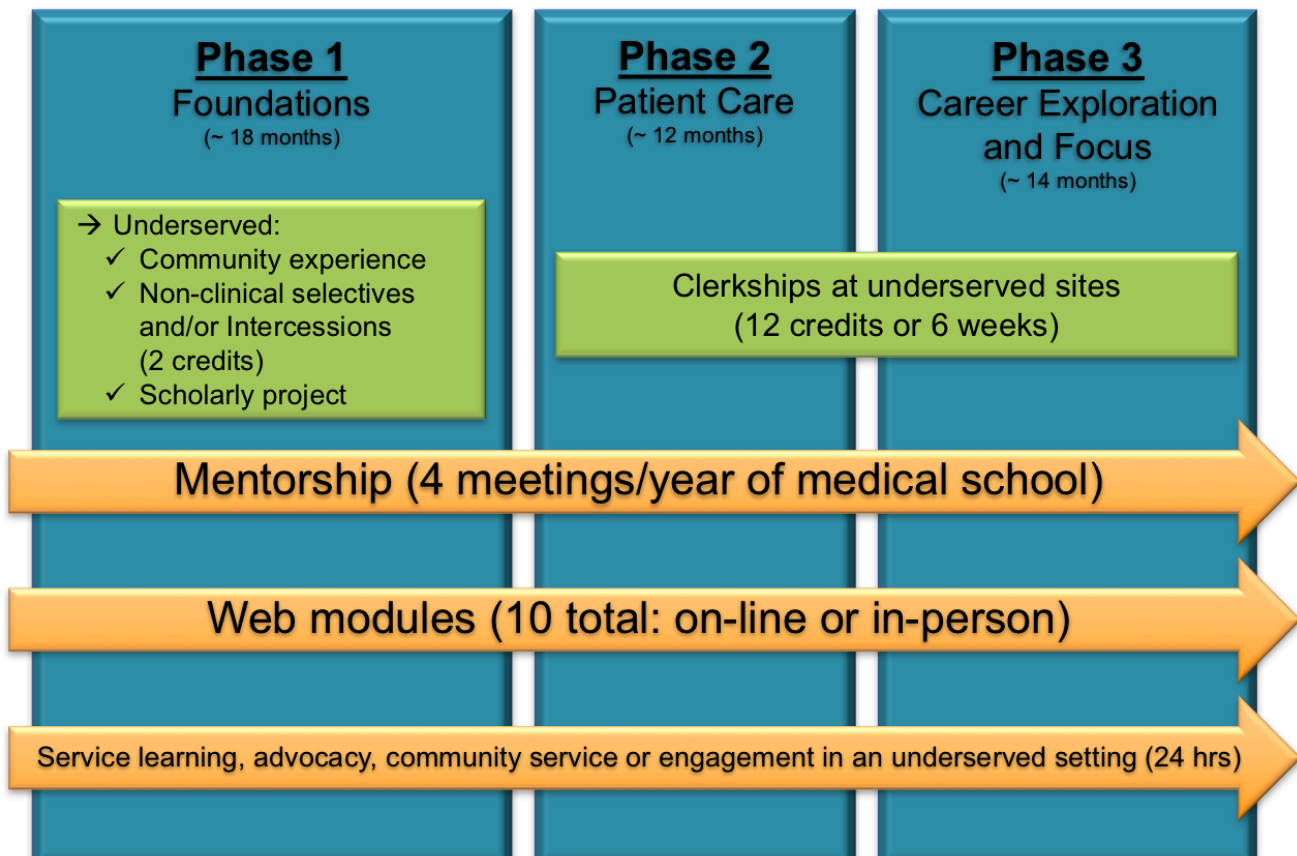
[Student FAQ](#)

[Prospective students, apply now!](#)

[The UP Mentoring Guide](#)

**UP Website:** <http://depts.washington.edu/fammed/education/programs/upath/>

## Underserved Pathway Requirements



# The Underserved Pathway (UP) – Requirements for Pathway Certification

UP Faculty: Sharon Dobie, MD, MCP; David Evans, MD

UP Program Coordinator: Jaime Fitch – [upath@uw.edu](mailto:upath@uw.edu) (206) 616.7889

<b>Longitudinal Mentorship</b>
UP Students must complete a minimum of <b>four meetings</b> with their Underserved Pathway mentor per year (once per calendar quarter) for the duration of their enrollment in the pathway. Meetings can be in-person, by phone/Skype, or by email. Mentorships are tracked, via an on-line assignment tracker completed by the student.
<b>Non-Clinical Selectives and/or Intersessions (Two Credits)</b>
The following are ONLY <b>some examples</b> of our UP-approved University of Washington School of Medicine (UWSOM) non-clinical selectives: → See UP website for more! >> <a href="http://depts.washington.edu/fammed/education/programs/upath/requirements/courses/pre-clinical">http://depts.washington.edu/fammed/education/programs/upath/requirements/courses/pre-clinical</a> Examples of selectives:
<ul style="list-style-type: none"><li>• Spanish for Health Professionals</li><li>• Introduction to Global Health</li><li>• Rural Health Care Delivery</li><li>• Russian for Healthcare Providers</li><li>• Geriatrics from a Cultural and Interdisciplinary Perspective</li><li>• Health Disparities Seminar</li><li>• Topics in Health and Human Services in Rural Communities</li><li>• Indian Health Problem-Based Learning Cases</li><li>• AIDS: A Multidisciplinary Approach</li></ul>
<b>Underserved Community Experience</b>
UP students must complete <u>one</u> of the following: <ul style="list-style-type: none"><li>• Rural Underserved Opportunities Program (RUOP)</li><li>• Global Health Immersion Program (GHIP)</li><li>• Primary Care Practicum (PCP) in an underserved setting</li><li>• Clinical clerkship in an underserved setting (minimum 4 weeks)</li></ul>
<b>Scholarly Project - Focus on Underserved (Many students complete Independent Investigative Inquiry (III))</b>
Scholarly project with an underserved focus, often completed as a III project. III projects completed within the context of RUOP or GHIP automatically qualify for credit. III projects completed in other ways, as an MSRTP project for example can be given credit if the topic is related to underserved issues and approved by UP advisors. If a student's III requirement was waived upon entering medical school, there are a couple options: <ul style="list-style-type: none"><li>• If the project for which the III was waived focused on underserved issues, UP advisors will review and, if appropriate, give credit.</li><li>• If the reason the III was waived did not include a project focused on underserved issues, the student can work with UP advisors to develop and complete an alternative project.</li></ul>
<b>Patient Care Phase or Career Explorations - Clinical Courses (12 Credits, or 6 weeks)</b>
UP Students must complete 12 credits (minimum of 6 weeks) of clinical courses (required or elective clerkships, sub-internships, advanced preceptorships) in an underserved setting.
<b>Online Module Curriculum</b>
UP Students must complete TEN modules focusing on issues affecting the underserved: <u>Who Are the Underserved?</u> is the only required module
<ul style="list-style-type: none"><li>• Who Are the Underserved?</li><li>• Medicare 101</li><li>• Medicaid 101</li><li>• Race, Ethnicity, and Healthcare</li><li>• Patients with HIV/AIDS</li><li>• Introduction to Substance Abuse</li><li>• Introduction to Homelessness</li><li>• Chronic Poverty and Low Income</li><li>• Intimate Partner Violence</li><li>• Exploring Disability – Beyond the Medical Module</li><li>• Public Health Epidemiology</li><li>• Health Literacy</li><li>• Advocacy</li><li>• Team Module</li><li>• Community Health</li><li>• Reflections: Chimamanda Adichie: <i>The Danger of A Single Story</i></li><li>• Behavior Change and Motivational Interviewing in Underserved Populations</li><li>• Oral Health</li><li>• Ethics of Medical Volunteerism</li><li>• Refugee and Immigrant Health</li><li>• Incarcerated Healthcare</li><li>• Rural Health Module – Part 1: Living and working in rural communities</li><li>• Rural Health Module – Part 2: Service structure and access to care</li></ul>
<b>Service Learning, Advocacy, Community Service or Engagement in an underserved setting</b>
Involvement with a group or project that serves underserved community members. UP students must complete a total of 24 hours during medical school (average of 8 hours per phase). <b>Some examples include, but are not limited to:</b> <ul style="list-style-type: none"><li>• Community Health Advancement Program (CHAP, Seattle, WA), House of Charity (Spokane, WA), Move Your Numbers (Spokane, WA) Downtown Clinic (Laramie, WY), Health Equity Circle (Seattle and Spokane, WA), Student Health Initiative for Access (SHIFA, Seattle, WA), Friendship Clinic (Boise, ID), Brother Francis Shelter (Anchorage, AK), and Browning Blackfeet Reservation Community Outreach and Science Education Project (Browning, MT). Non-UW opportunities are fine; check with a UP advisor if you have questions about whether your community experience can qualify for credit.</li></ul>