



University of Washington

Department of Family Medicine

Newsletter Summer 2013



<b>CHAIR'S NOTES</b>	<b>3</b>
<b>NOTE FROM MATTHEW THOMPSON, BSC, MBCHB, MPH, DPHIL, MRCGP</b>	<b>6</b>
<b>UPCOMING EVENTS</b>	<b>7</b>
<b>GRAND ROUNDS JULY 2013 AND SCHEDULE</b>	<b>7</b>
<b>DEPARTMENT PICNIC 2013</b>	<b>7</b>
<b>MEDICAL STUDENT EDUCATION</b>	<b>7</b>
<b>UNDERSERVED PATHWAY UPDATE</b>	<b>7</b>
<b>RESEARCH</b>	<b>7</b>
<b>WWAMI REGION PRACTICE AND RESEARCH NETWORK</b>	<b>7</b>
<b>TOBACCO STUDIES</b>	<b>8</b>
<b>WOMEN'S HEALTH</b>	<b>8</b>
<b>WWAMI REGION UPDATE</b>	<b>9</b>
<b>CONGRATULATIONS AND FAREWELL TO DR. BRUCE RICHARDSON</b>	<b>9</b>
<b>CLINICAL FACULTY</b>	<b>9</b>
<b>SARA MACKENZIE, MD, MPH</b>	<b>9</b>
<b>PUBLICATIONS</b>	<b>10</b>
<b>THE WONDER AND THE MYSTERY: 10 YEARS OF REFLECTIONS FROM THE ANNALS OF FAMILY MEDICINE</b>	<b>10</b>
<b>PRESENTATIONS</b>	<b>10</b>
<b>AWARDS</b>	<b>12</b>
<b>CARES AWARD RECIPIENTS</b>	<b>12</b>
<b>GME RESEARCH DAY</b>	<b>12</b>
<b>UW AWARDS OF EXCELLENCE: UNIVERSITY FACULTY LECTURE AWARD</b>	<b>12</b>
<b>STFM 2013 AWARDS CEREMONY</b>	<b>13</b>
<b>UW PRAISE AWARD</b>	<b>13</b>
<b>GOLD FOUNDATION AWARDS</b>	<b>13</b>
<b>ADVANCEMENT NEWS</b>	<b>14</b>
<b>GUNN-LOKE ENDOWED PROFESSORSHIP FOR INTEGRATIVE PAIN MEDICINE</b>	<b>14</b>

University of Washington Department of Family Medicine  
 Summer Newsletter

Chairman’s Notes  
 Tom E. Norris, MD  
 June 13, 2012

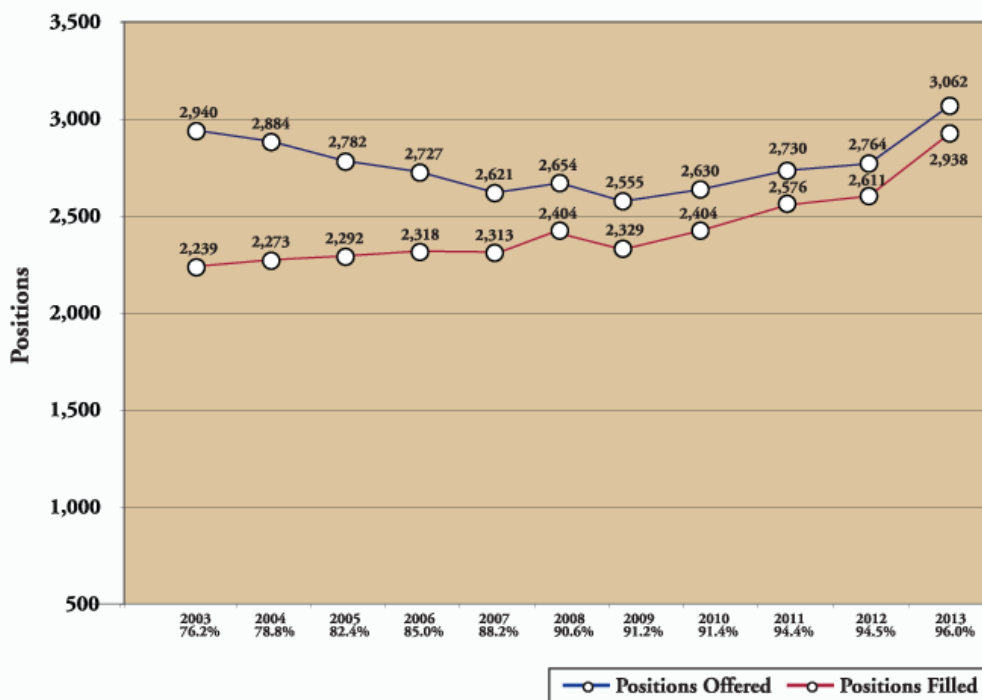
It is hard to believe that summer is here already, but the calendar and the weather seem to confirm it. The end of the academic year is always very busy with medical school graduation, residency graduation, and dozens of projects to finish. I hope that summer will mean that each of you will get some time for reflection, vacation and family.

**Match, Interest in Family Medicine, and the Big Picture**

In the spring newsletter I reported on the outcomes of the match for the UW Family Medicine Residency and for the Network. We now have a better view of the big picture. Nationwide we saw more students match into Family Medicine than any time in the last 15 years, with more US seniors also choosing our specialty:

The big concern among all third year U.S. medical students at the present time is the fact that both US allopathic and osteopathic medical schools are rapidly expanding their class sizes—nationwide roughly 30% in the last 10 years. This expansion has been done with some new schools and some expansion at existing schools. For example, UW has expanded from about 200 students per class eight years ago to 235 starting the first year this fall. Twenty of these new seats came from the opening of the Spokane first year campus a few years ago; ten were added by the Montana legislature for E-2013, and 5 more were also added this year by the Idaho legislature. At the same time medical student education has expanded, the expansion of residency programs has been capped, with the result that Family Medicine positions only increased from 2940 to 3062 or about 4%. After the Match was completed this year there were still almost 400 U.S. seniors who were unmatched—for a variety of reasons. This is very concerning, because some of these students may never match, never receive graduate medical education, and never become licensed physicians.

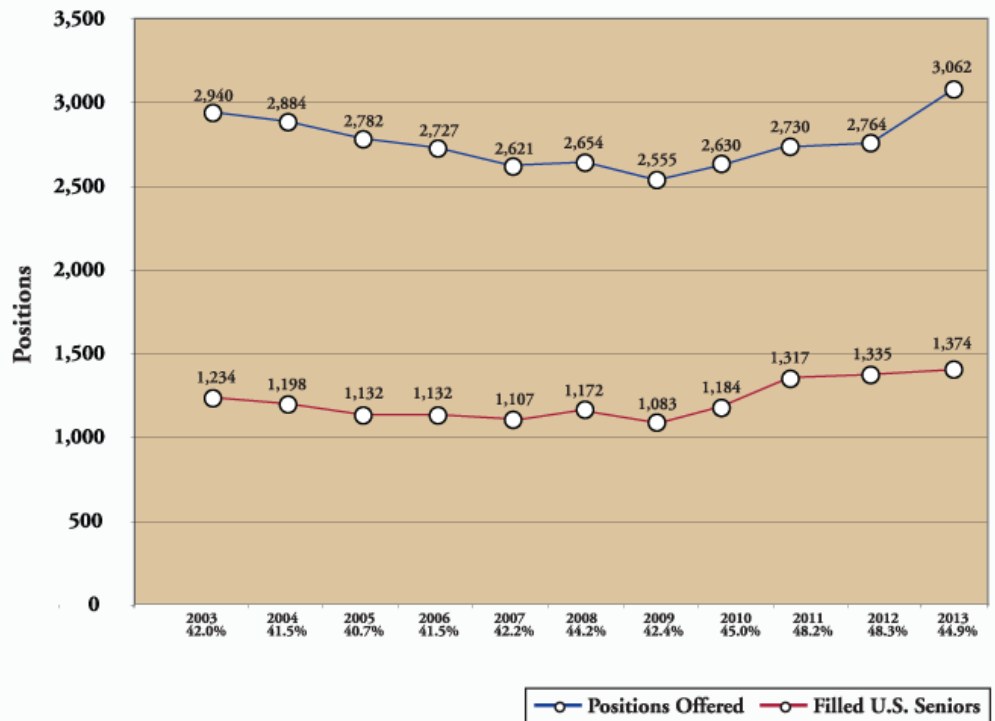
*Family Medicine Positions Offered & Filled in March (2003 – 2013)*



The other trend that we are currently seeing not only at UW, but also across the country is increasing membership in student Family Medicine Interest Groups—a very good sign. At the Chairs’ meeting this year, most schools reported seeing this trend, and we are seeing it here. One potential explanation is that the Affordable Care Act will significantly increase the demand for primary care physicians.

**Faculty:** Our faculty continues to grow as the Department grows. A look back over the last three decades reveals remarkable growth, especially in our WWAMI based volunteer clinical faculty. At the recent Washington Academy of Family Physicians meeting, I reported the significant increases that we have seen over the past few years:

FM Positions Offered & Filled with U.S. Seniors in Match (2003 – 2013)



Year end	1985	1990	1995	2000	2013
Total Faculty	17	23	21	29	70 (includes 31 MEDEX)
Clinical Faculty	342	426	487	750	1092 (includes 98 MEDEX)

**Medical Student Education:** Once again we had a strong showing in the match, with 37 UW fourth year students entering Family Medicine residencies. 22 of these students (59%) matched into Network residencies. The goal of our Medical Student Education (MSE) section is to have 40% of our graduating medical students match into Family Medicine. While 37 is good, we are working hard to increase the numbers. This requires a combination of admitting the right students and providing them with excellent programming and faculty role models while they are in medical school. I am very proud of the efforts being made by our MSE group. The big news items in Medical Student Education are a new second year class in Spokane and curriculum renewal:

- In Spokane, UWSOM has had 20 first year medical students at the WSU Riverpoint campus for the past few years. In the fall of 2013, we will pilot a second year class at this site. 17 students have signed up for this location, and they will be taught the same curriculum utilizing a small group model. Each small group will have a “guide”, and 2 of the 4 guides are family physicians. This new model of medical education will increase emphasis on small group learning, while decreasing the prominence of lectures. Lectures are an efficient way of presenting information, but evidence supports the notion that active learning results in better educational outcomes. If this approach works well in Spokane, we may see it used at our other sites.

- In the area of curriculum renewal, many committees and over 100 faculty and students have been considering a renewed curriculum for UWSOM. In April at UW Medicine leadership retreat, a draft of the new curriculum was discussed. I am attaching the draft outline and block diagram for the curriculum that was distributed at our retreat. There are several key points that are relevant to preparing students for Family Medicine:
  - A clinical skills acquisition immersion experience is planned at the beginning of medical school for all students
  - The Foundation Phase (basic sciences) would be shortened to 70 weeks and would end in January of year 2
  - Most students would have a RUOP experience as part of the Foundation
  - Structured board review for step 1
  - The second phase would be Patient Care/Career Exploration. Discipline based clerkships would disappear, but one of the new clerkships would be 12 week Family and Community-Centered Care—probably mostly Family Medicine
  - The third phase would be Career Focus/Residency Prep
 Continuously updated information on the curriculum renewal process may be found at [www.uwmedicine.org/Education/MD-Program/curriculum-renewal/pages/default.aspx](http://www.uwmedicine.org/Education/MD-Program/curriculum-renewal/pages/default.aspx)

The Family Medicine Department based Underserved Pathway is very popular among medical students and now has 209 students enrolled. This pathway provides extra education in care of the underserved and is an integral part of TRUST. It is the largest of the four pathways (Indian Health, Hispanic Health, Global Health, and Underserved) and it provides very valuable experience and education for our students.

The Family Medicine Sub-internship was selected by 29 students this year. They were placed in UW Family Medicine Network programs in the WWAMI region for an early taste of the life of a Family Medicine Resident.

**Residency:** Our residency moved to the new Northgate Clinic last March. In the new site we have worked closely with our colleagues in Psychiatry to institute the Behavioral Health Integration Program (BHIP), designed to improve care of patients with anxiety and depression. The new clinic is making progress toward becoming an NCQA level 3 Patient Centered Medical Home—a designation we will apply for late in 2013. We have also increased our interprofessional training efforts with MEDEX physician assistant students through the support of our HRSA title VII Academic Administrative Unit training grant.

Last August we inaugurated a new Family Medicine Global Health Fellowship for residency graduates interested in a career in Global Health. Kris Sherwood, a 2012 residency graduate, was our first Global Health Fellow. This non-ACGME fellowship is self-funded. Kris is in clinic as a junior faculty member half-time for 10 months per year. The other half of his time is spent on Global Health education. For the remaining 2 months each year the fellow participates in an international educational rotation.

**Research:** Last fall Laura-Mae Baldwin, MD, MPH, notified us that she planned to step down as head of the Research Section in the fall of 2013. Discussions among the Department research leaders led to a decision to externally recruit a new Vice-Chair for Research, who will also serve as Head of the Research Section. This decision has resulted in an extensive international search for an experienced senior family physician research leader with a strong history of extramural funding. I am very pleased to announce that Matthew J. Thompson BSc, MBChB, MPH, DPhil, MRCGP will join our Department as Vice Chair for Research and as the Cohen Endowed Professor on September 1. Matthew is a board certified clinically active family physician who has been a tenured investigator at Oxford for the last ten years. Prior to that he was a Primary Care Research Fellow at UW. He has published over 80 peer-reviewed articles with a recent focus on prevention, ambulatory clinical care, and point of care testing. Once he is settled, we will ask him to provide comments for an upcoming newsletter.

**Sports Medicine:** The Sports Medicine Section is adding a second position to our ACGME accredited Sports Medicine Fellowship. This position has been funded by Seattle Children's Hospital and will be filled by a pediatric residency graduate. In terms of research the section had a banner year, with six research abstracts selected for podium presentations at the American Medical Society for Sports Medicine Annual Meeting (AMSSM) (30 total were selected from a field of 120). In addition, the faculty, fellows and residents continue to publish a significant amount in the areas of sudden cardiac death in athletes, concussion, and tendinopathy. Two notable projects this year included the AMSSM Position Statement on Concussion in Sport, led by Kim Harmon and Jon Drezner, which is a comprehensive, evidence based practice guide for physicians to manage concussion. Another huge undertaking was the collection of papers spearheaded by Jon Drezner in a special issue of the British Journal of Sports Medicine (<http://bjsm.bmj.com/content/47/3.toc>), which sought to teach and clarify normal from abnormal ECG finding in athletes. These papers will be translated into an online learning module which will be accessible to anyone in the world to improve their ECG interpretation skills in athletes and will be part of a paradigm shift in how we manage athletes in the future. The Section of Sports Medicine continues to partner with the Nick of Time Foundation (<http://nickoftimefoundation.org/>) to provide 8 – 10 community heart screens a year to try and identify abnormalities which may cause sudden cardiac death. Last year over 3000 youths were screened free of charge through an amazing partnership of volunteers and medical personnel led by the Section of Sports Medicine. The section will be relocating to a brand new multi-disciplinary clinic in Husky Stadium in early September 2013 and is looking forward to great things to come with its new home and its new structure.

**MEDEX:** The MEDEX Northwest Physician Assistant Program continues to grow. Accreditation and funding have been received for a new branch educational site in Tacoma. This new setting will be located on the Tacoma Campus of the University of Washington and will focus on training veterans as physician assistants. The Department and MEDEX are seriously engaged in HRSA grant-sponsored efforts to teach MEDEX students, medical students, and Family Medicine Residents in a collaborative, Patient Centered Medical Home setting. So far, this effort is going well, and we are very excited to be playing a part in training the ideal primary care workforce of the future. We are currently engaged in this training with 4-month PA preceptorship rotations at our Northgate and Harborview Residency sites. In these rotations, we are pairing the PA student with a medical student on clerkship (when possible), several residents and one or more faculty members to teach them all about the value of interprofessional clinical teams. Beginning early in 2014, we hope to have similar teams in several other network residencies. If you are willing to be part of this effort, please let me know.

**Conclusion:** This is a wonderful time to be a family physician, and also a wonderful time to be associated with the University of Washington Department of Family Medicine. We are seeing strong student interest, new residency programs, solid match results, and health systems that are aggressively recruiting family doctors. At UWDFM, our faculty is growing and our programs are flourishing. Much of our success is because of the work that you are doing—Thanks, Tom

### **A Note from Matthew Thompson**

I am very pleased to be returning to the University of Washington as Vice Chair of the Research Section. I strongly believe that research is essential to the success of primary care, from providing high quality patient care, to changing policy on how care is organized, delivered and reimbursed. So I look forward to continuing the long tradition of research on rural health and health workforce that the Department is nationally recognized for. But I am also acutely aware of the major gaps in evidence that we face in daily patient care, so part of my vision includes pursuing new areas of clinical research that will change how we diagnose and treat patients in family medicine. Working collaboratively with clinical colleagues, clinical educators and policy makers is really at the heart of successful research, so I look forward to working closely with colleagues across the WWAMI region to continue the success of research in UW Family Medicine.

## Upcoming Events

### *Family Medicine Grand Rounds*

Please join us on Wednesday, July 3, 2013, for a presentation by Mary Catlin, Lucinda Grande, and Elizabeth Hutchinson on Chronic Pain Management.

### 2013 Schedule

**July 3** – Mary Catlin, Lucinda Grande, and Elizabeth Hutchinson presenting on Chronic Pain Management.

**August 7** – John Geyman and David Gimlett presenting "The Affordable Care Act: On the Bumpy Road to Single Payer Medicine".

**September 4** – Tom Norris presenting "Longitudinal Integrated Clinical Education (LICE) for Medical Students".

**October 2** – Bob Crittenden presenting "Washington State health policy and relevant research".

**November 6** – Pam Pentin presenting "The Primary Care of Cancer Survivors".

### *Department Picnic*

The annual Department of Family Medicine Picnic will take place Wednesday, August 7 from 4:30 to 7:30 at Gasworks Park. Family members are welcome. You will receive an official RSVP after July 4th.

Unfortunately Molly Moon's will not have an ice cream truck this summer. Street Treats will drive up and offer ice cream and cookies. Renton Tech is returning with a fabulous assortment of food stations.

Questions? Contact Val Pruitt.

2013 Picnic Committee Members: Nicole Barone, Sally Mantz, Michael Franson, Amanda Harris, Gwen Credit, Wes Fitch, Leyna Ho and Val Pruitt

## MSE

### *Underserved Pathway*

The Underserved Pathway enrollment grew to 218 this spring, an all time high. On May 30, 2013, the UP celebrated our graduating UP students along with the Indian Health Pathway, Global Health Pathway, and Hispanic Health Pathway. Close to 100 students, faculty, and family attended to honor our 29 UP graduates and the graduates from the other Pathways. The guest speaker was Dr. Genevieve Pagalilauan, co-chair of the Service Learning Advisory Committee. The UP already has 20 E2013 students enrolled! These early enrollees are TRUST Scholars, who complete the module "Public Health Epidemiology" prior to their First Summer Experience in their Host Communities. This spring 32 UP students attended a module session on bias. This session was facilitated by UP faculty, Dr. Amanda Kost and by Valerie Ross, Behavioral Science faculty from the UW residency.

## Research

### *WWAMI region Practice and Research Network New Pilot Project Collaborations*

One of the WPRN's goals for 2013 is to engage in new collaborations with academic investigators. Already

this year, the WPRN Coordinating Center has developed new pilot project collaborations with 3 investigators.

Amy Bauer, MD, Acting Assistant Professor in the Department of Psychiatry and Behavioral Sciences, and an ITHS KL2 scholar, is leading a pilot study, *“Use of mobile technology for disease self-management among primary care patients.”* Data collection for this brief patient survey is currently underway at seven WPRN practices across the WWAMI region.

Emily Godfrey, MD (Department of Family Medicine), was awarded a pilot grant through the Institute of Translational Health Sciences (ITHS) Community Partners in Research Funding Program (see New Funding for more details). In addition to the research study itself, the project will provide important information about the utility of the WPRN’s data sharing infrastructure, LC Data QUEST.

Linda Ko, PhD, Assistant Member of the Fred Hutchinson Cancer Research Center, received pilot funding from the Cancer Consortium for her project *“Cancer Communication within Social Networks,”* which aims to address colorectal cancer screening disparities among Hispanic populations. This pilot project will work with a WPRN member practice that works with substantial numbers of Hispanic patients. For more information about the WPRN, contact Gina Keppel at [gakeppel@uw.edu](mailto:gakeppel@uw.edu).

### *Tobacco Studies*

NEJM [Letter to the Editor](#) Raises Awareness of Smoking Among Those with Mental Illness

Two studies published in the NEJM in February reported that tobacco use is still the greatest health hazard in the US, accounting for the same number of annual deaths, and exceeding smoking-related mortality estimates, from 30 years ago. Yet, most people, including many in the health care profession, think the problem has been decreasing. This is largely due to the fact that smokers are increasingly concentrated among less visible, low social status populations, especially those with mental illness and substance abuse issues. Joseph Cerimele, a current Tobacco Studies Program Scholar and psychiatry NRSA fellow and Abigail Halperin, Director of the Tobacco Studies Program, co-authored a letter to the NEJM to highlight the lack of attention paid to helping those with mental illness quit smoking. This lack of attention is especially concerning since, within this population: 1) There is a 10-15-yr lower life expectancy than those without a psychiatric diagnosis, largely attributable to medical illnesses from their tobacco use, and 2) These patients want to quit as much as those without mental illness, but are less often offered treatment.

Cerimele JM and **Halperin AC**. Smoking, Marginalization and Mental Illness. *NEJM*. 2013 May;368(18):1752.

### *Women's Health*

Emily Godfrey, MD, has been invited to serve as an Advisor to the World Health Organization for the 2nd WHO Guidelines Development Group Meeting on Sexuality Counseling for Health Care Providers, to be held July 8-12 in Geneva Switzerland. The main objectives of this meeting are 1) to assess the results of the systematic search and assessments of the evidence related to the scope of the WHO Sexuality counseling guidelines for health care providers, and 2) to develop draft recommendations for WHO member countries pertaining to the guidelines.

### *New Funding:*

Emily Godfrey, MD has been funded by the Institute of Translational Health Sciences' Community Partners in Research Pilot Program for a two-year project entitled, *How well are contraceptive guidelines followed? A feasibility study to measure national contraceptive guideline adherence among women with cardiovascular disease using LC Data QUEST*. This project will examine the extent to which primary care has adapted and



implemented recent national guideline recommendations related to contraceptive care into clinical practice. It will also ensure the accuracy of data extracted from the electronic medical record (EMR) using Locally Controlled Data QUery, Extraction, Standardization and Translation (LC Data QUEST) infrastructure, which provides a mechanism for performing extensive chart audits, even among different EMR systems.

Emily Godfrey, MD is the recipient of an IPA (Intergovernmental Personnel Act) agreement with the CDC for one year to provide expertise to the Fertility Epidemiology Studies Team of the Women's Health and Fertility Branch in contraceptive safety and effectiveness, and to help develop national and global evidence-based contraceptive guidelines.

## WWAMI Region Update



Family Medicine Clerkship directors celebrate outstanding career of retiring physician and educator Bruce Richardson. Dr. Richardson, a family medicine physician practicing in Havre, Montana, has been awarded the 2013 Montana Academy of Family Physicians (MAFP) Physician of the Year award. Dr. Richardson has been teaching UWSOM students since 1992 and has served as the family medicine clerkship site director for much of that time. He has been an outstanding role model to the students who have passed through Havre. His practice has taught 8 students yearly in their six week third year Family Medicine clerkship. He generally had the student for four of those weeks in dedicated one on one teaching. Dr. Richardson also served as a member of the Montana WWAMI Admissions Committee from 2006 to 2011 where he helped select the next generation of students for the Montana WWAMI program, serving as the executive committee member for the last three years. Please join us in congratulating Dr. Richardson for this well-deserved award!

## Clinical Faculty

**Sara Mackenzie, M.D., M.P.H.**, will become the first **Assistant Dean for Undergraduate Public Health** in the School of Public Health. In this role Sara will oversee the rapidly expanding undergraduate major and coordinate undergraduate offerings across the School. Sara earned her undergraduate degree in biology from the University of Iowa, her M.D. from the University of California - Davis, and her M.P.H. from UW, and completed her Family Practice training at UW.

Sara is a graduate of our UW NRSA Primary Care Research Fellowship. She is a clinical instructor in the department of Health Services and clinical assistant professor in the Department of Family Medicine. She is a dedicated educator, longstanding and beloved instructor of Health Services 100 (Personal and Public Health) and a freshman seminar on Academic and Personal Discovery, HServ 481 (Contemporary Issues in Public Health), and co-author of *Your Health Today: Choices in a Changing Society*, a personal health textbook now entering its fourth edition. As Director of the undergraduate public health major, Sara managed its transfer to the School last year, doubled its size since then, and leads the committee that coordinates and plans our undergraduate curriculum. Outside of work, Sara is an avid equestrian.



## Publications

Fenton JJ, Xing G, Elmore JG, Bang H, Chen SL, Lindfors KK, **Baldwin LM**. [Short-term outcomes of screening mammography using computer-aided detection: a population-based study of medicare enrollees](#). *Ann Intern Med*. 2013 Apr 16;158(8):580-7. doi: 10.7326/0003-4819-158-8-201304160-00002.

**Mauksch L, Farber S, Greer HT**. Design, dissemination, and evaluation of an advanced communication elective at seven U.S. Medical schools. *Acad Med*. Jun 2013;88(6):843-851.

**Mauksch L, Safford B**. Engaging Patients in Collaborative Care Plans. *Family Practice Management*. May/June 2013;20(2):35-39.

Saver BG, Wang CY, **Dobie SA**, Green PK, **Baldwin LM**. [The central role of comorbidity in predicting ambulatory care sensitive hospitalizations](#). *Eur J Public Health*. 2013 Mar 28. [Epub ahead of print]

Several UW Family Medicine authors have essays anthologized in a new book of essays selected from the first 10 years of the *Annals of Family Medicine*. Edited by Robin Gotler and with a Foreword by Rachel Naomi Remen, the book, [The Wonder and the Mystery: 10 Years of Reflections from the Annals of Family Medicine](#), has just been released by Radcliffe Publishing, Oxford.

Roger A. Rosenblatt, MD, MPH, MFR. "Getting the News."

Thomas R. Egnew, EdD, LICSW, "Suffering, Meaning and Healing: Challenges of Contemporary Medicine."

Jon O. Neher, MD. "The Decade Dance."

William R. Phillips, MD, MPH and Larry A. Green, MD. "A Public Celebration of a Personal Doctor."

Roger A. Rosenblatt, MD, MPH, MFR. "Ecological Change and the Future of the Human Species: Can Physicians Make a Difference?"

For more information on the book, please see: <http://annfammed.org/site/misc/book.xhtml>

## Presentations

**Evans D, Kost A, Grocock J, Dobie S**. Online Web Modules; Developing Effective Ones and Sustaining Them. A Lecture Discussion, Society of Teachers of Family Medicine, Annual Conference, Baltimore, Maryland.

**Godfrey EM**. Combined Hormonal Contraceptives and Perimenopause: Management Strategies for a Smoother Transition. University of Washington Department of Obstetrics and Gynecology Women's Health Care Update, Seattle, WA. March 2013.

**Godfrey EM**. Contraceptive cases utilizing the new U.S. Selected Practice Recommendations for Contraceptive Use. Contraceptive Technology Annual Conference, San Francisco, CA. March 2013.

**Godfrey EM**. Systematic Reviews: The Foundation of Evidence-based Practice. University of Washington Department of Family Medicine Workshop, Seattle WA. May 2013.

**Godfrey EM**. Update on the New U.S. Selected Practice Recommendations. Contraceptive Technology Annual Conference, San Francisco, CA. March 2013.

**Godfrey EM, Shih G**. Adolescent Women's Healthcare: STIs, contraception and pregnancy. Washington Academy of Family Physicians 64<sup>th</sup> Annual Scientific Assembly, Cle Elum, WA. May 2013.

- Patterson DG**, Fordyce MA, **Skillman SM**, Doescher MP. *The pre-hospital emergency medical services workforce in rural areas: results from a survey in nine states*. Poster presented at National Rural Health Association 36th Annual Rural Health Conference, Louisville, Kentucky, 5/8/13.
- Patterson DG**, Longenecker R, Schmitz D, Phillips RL Jr, **Skillman SM**, Doescher MP. *Family medicine Rural Training Tracks: residency models and graduate outcomes*. Presented at 26th Annual Northwest Regional Rural Health Conference, Spokane, Washington, 3/21/13.
- Patterson DG**, Longenecker R, Schmitz D, Phillips RL, **Skillman SM**, Doescher MP. *Rural residency training for family medicine physicians: early-career outcomes*. Presented at Ninth Annual AAMC Physician Workforce Research Conference, Alexandria, Virginia, 5/2/13.
- Palazzo L**, **Skillman SM**. Washington employers' current and expected demand for five health care occupations: preliminary findings from employer interviews. Presented to Invitational Forums "Meeting Employers' Workforce Needs," Spokane, Washington, 5/30/13, and SeaTac, Washington, 6/3/13.
- Patterson DG**, **Skillman SM**, Robinson A, Wingrove G. *Discussion of opportunities identified to advance community paramedicine and conduct research to build the evidence base from the National Consensus Conference on Community Paramedicine*. Presented at Ninth International Roundtable on Community Paramedicine, Kenilworth, Warwickshire, United Kingdom, 5/22/13.
- Skillman SM**. *Our health workforce: what's known, suspected and lots of questions*. Presented to Workforce Development Council of Seattle-King County, Healthcare Sector Employer Panel, Seattle, Washington, 4/5/13.
- Skillman SM**, **Andrilla CHA**, Kaplan L, Doescher M. *Outpatient productivity and practice characteristics of rural primary care nurse practitioners in states with varying physician oversight regulations*. Presented at Association of American Medical Colleges Physician Workforce Conference, Washington, DC, 5/3/13.
- Skillman SM**, **Andrilla CHA**, **Patterson DG**, **Sanders S**. *Building the health information technology (HIT) workforce for rural primary care practices*. Presented at 26th Annual Northwest Regional Rural Health Conference, Spokane, Washington, 3/21/13.
- Skillman SM**, **Andrilla CHA**, **Patterson DG**, **Sanders S**. *Building the health information technology (HIT) workforce for rural primary care practices*. Presented at State Offices of Rural Health Region D Annual Meeting, San Diego, California, 4/30/13.
- Skillman SM**, Mounts T, Yen W, Robertson C, Jensen K, Johnson N. *How can Washington's rural primary care workforce meet demand in 2014 and beyond?* Presented at 26th Annual Northwest Regional Rural Health Conference, Spokane, Washington, 3/20/13.
- Skillman SM**, Yen W. *Washington State primary care provider survey, 2011-2012: summary of survey findings*. Presented at Washington State Medical Association Interspecialty Advisory Council Meeting, SeaTac, Washington, 4/20/13.

## Awards

### *Cares Awards*

The UW Medicine Cares Award is based on UW Medicine's Service Culture Guidelines, which are: respect privacy and confidentiality; communicate effectively; conduct myself professionally; be accountable; and be committed to my colleagues and to UW Medicine.



Our Northgate nominees are Judy Pauwels, MD; Christina Tanner, MD; and Claire Fung, MD.

### *GME Research Day*

Dear colleagues,

Saturday, April 13, 2013, was the first annual UW Medicine Graduate Medical Education Research Day. I understand that over 120 research studies were submitted from residents and fellows across the disciplines within UW School of Medicine. Only ten were selected for oral presentation.

I am delighted to report that Brett Toresdahl received the First Place Presenter Award for the top research presentation – “Incidence and Outcomes of Sudden Cardiac Arrest in High Schools: A Prospective Study from the National Registry for AED Use in Sports.”

This is an incredible honor for Brett and our Department. Please join me in congratulating him. Terrific job!

Jonathan Drezner, MD



### *Awards of Excellence*

The University of Washington has announced this year's Awards of Excellence recipients, recognizing achievements in teaching, mentoring, public service and staff support.

The University Faculty Lecture Award was presented to Stephen Gloyd, Professor of Global Health and Health Services, Adjunct Professor of the Departments of Family Medicine and Public Affairs. Since 1976, this award has honored current or emeriti faculty whose research, scholarship, or art has been widely recognized by their peers and whose achievements have had a substantial impact on their profession, on the research or performance of others, and perhaps on society as a whole. It acknowledges outstanding creativity and scholarship by University faculty. The recipient delivers the Annual Faculty Lecture to inform the University community about his or her work.

### *STFM Awards Ceremony*

The following awards were presented at the STFM Annual Spring Conference, May 2013, in Baltimore, MD.

Dr. Tom Norris was awarded the STFM Foundation F. Marian Bishop Leadership Award, which honors individuals who have significantly enhanced the academic credibility of family medicine by a sustained, long-term commitment to family medicine in academic settings.

Dr. Sharon Dobie accepted one of the 'Top Ten' Awards for medical professionals with the higher percentage of medical students choosing family medicine over the previous three-year period.



### TRUST

Jay Erickson, Suzanne Allen, Tom Greer, and John McCarthy (not pictured) accept the STFM Innovative Program Award for TRUST. This award honors excellence in the development of an original educational program or activity for residents, students or faculty.



### *UW PRAISE Award*

Mark Beard, Lynn Oliver, Justin Osborn, and Tyler Wheeler are among the first members of our Department to be recognized with the new UW PRAISE award. This is based on their patients' evaluation of their care, as derived from the CG-CAHPS surveys. Those who win the award have at least 15 surveys in a 6 month period AND achieve an >80th percentile rank for communication. Their recognition places them among the top physicians in the country in listening and communications skills.

### *Gold Foundation Awards*

The two faculty members who will be inducted the Gold Humanism Honor Society are both family physicians: Dr. Freddy Overstreet and Dr. Jay Erickson.

In addition Freddy Overstreet will receive the **Leonard Tow Humanism in Medicine award**. The Gold Foundation sponsors the annual Leonard Tow Humanism in Medicine Awards for a graduating student and faculty member at 96 of the nation's medical schools. This award is presented to the student and faculty member who best demonstrate the Foundation's ideals of outstanding compassion in the delivery



of care, respect for patients, their families, and healthcare colleagues, as well as demonstrated clinical excellence.

Please join us in congratulating Jay and Freddy.

## Advancement News

### *The Gunn-Loke Endowed Professorship for Integrative Pain Medicine*

Inter-disciplinary collaboration is at the heart of the Gunn-Loke Endowed Professorship for Integrative Pain Medicine. Established in 2012 through a generous gift from C. Chan Gunn, M.D. and Peggy Y. C. Gunn, this Professorship is held by the Department of Anesthesiology and Pain Medicine.



Dr. Gunn is Chinese and was born in Malaysia. He studied medicine at Cambridge and immigrated to Canada in 1966. His work has focused on intractable pain for 40 years and led to an important medical discovery: pain and illness can arise from dysfunction in the peripheral nerve and can be treated with GunnIMS — a stimulation technique that applies acupuncture needles according to anatomy. IMS combines the science of bio-energy with the traditional Chinese concept of Chi. Dr. Gunn is the Founder and President of iSTOP in Vancouver, British Columbia. He is a Clinical Professor at the UW Pain Center. He received the Order of British Columbia in 2001 and the Order of Canada in 2002 for his work on the concept of pain following neuropathy. In 2007, Dr. Gunn was elected Fellow of the Royal College of Physicians in London, UK.

The purpose of the Gunn-Loke Endowed Professorship is to enhance the University's ability to recruit and retain distinguished faculty in the field of integrative pain medicine — candidates who are recognized nationally for their expertise and who also are expected to make contributions to the advancement of teaching and research in the field.

In 2012, Heather Tick, M.D., Clinical Associate Professor, Departments of Family Medicine and Anesthesiology and Pain Medicine, was recruited to UW Medicine and she is the first holder of the Gunn-Loke Endowed Professorship for Integrative Pain Medicine.



*This newsletter is the result of the collaboration of the Administration, Medical Student Education, Residency, Residency Network, Research, Sports Medicine, Palliative Care, MEDEX, and Advancement sections of the Department of Family Medicine. Many thanks to everyone who submitted content. A special thanks to Amy Clark, Website Assistant for Family Medicine, for her great work in getting this newsletter online. Please send questions, comments, and concerns to [fmnews@fammed.washington.edu](mailto:fmnews@fammed.washington.edu).*

*Thank you!*