

# STUART MIYASAKO

## Targeted Rural Underserved Track

WWAMI  
**TRUST**  
UW MEDICINE

Idaho

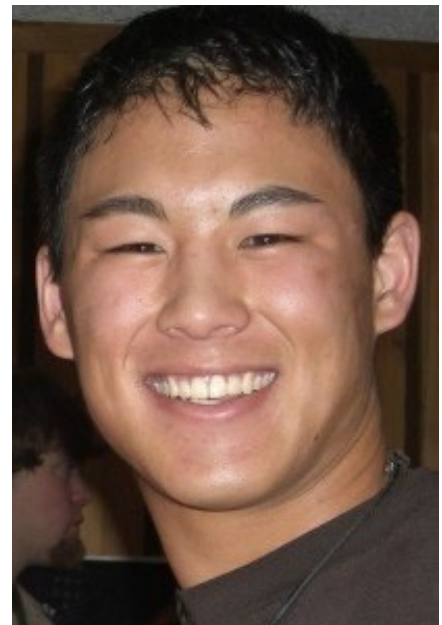
Entering Class of 2015

*TRUST seeks to provide a continuous connection between rural, small city underserved communities, medical education, and health professionals in our region. Our goal is to create a full-circle pipeline by guiding qualified students through a special curriculum that connects continuity communities in WWA-MI to the University of Washington School of Medicine and its network of affiliated residency programs in an effort to help meet the workforce needs of the region.*

Hello McCall, my name is Stuart Miyasako. I'll be spending much of my medical school as a TRUST Scholar in McCall. I was beyond excited to find out your community would be my continuity community site. I grew up in Homedale, and competed athletically with students from McCall and the surrounding area. Our family also owned a small cabin in the mountains where we would stay after skiing at Brundage Resort. In all the time I have spent in McCall, I have met only the kindest and friendliest of people and I'm eager to be a part of the community.

The past three years have been spent as a farmhand on our family farm. I have worked extensively with other farmers, ranchers, mechanics and metal fabricators. This made the decision to become a physician difficult, since I was reluctant to leave the small town lifestyle to which I was accustomed. However, when I heard about the TRUST program at UWSOM, I knew I was on board. I'm now able to do what I enjoy in the rural setting in which I am most comfortable.

I can't wait to get ice cream in the alley shop or play golf at Jug Mountain, and I'm looking forward to breakfast at the Pancake House or a steak dinner at The Mill, but most of all, I can't wait to meet all of you and finally start on my journey toward becoming a physician. I'm ready to learn all you have to offer, and I'm counting down the days until I can begin!



### Contacts

Dave Hall, MD  
Primary Preceptor  
St. Luke's Payette Lakes  
Family Medicine Clinic  
211 Forest Street  
McCall, ID  
(208) 634-2225

Mary Barinaga, MD  
Idaho Assistant Dean  
Regional Affairs, UWSOM  
322 E. Front St., Ste. 442  
Boise, ID 83702  
(208) 364-4548

