

# GRACE MEEKER

## Targeted Rural Underserved Track



WWAMI  
**TRUST**  
UW MEDICINE

Idaho

Entering Class of 2018

*TRUST seeks to provide a continuous connection between rural, small city underserved communities, medical education, and health professionals in our region. Our goal is to create a full-circle pipeline by guiding qualified students through a special curriculum that connects continuity communities in WWAMI to the University of Washington School of Medicine and its network of affiliated residency programs in an effort to help meet the workforce needs of the region.*

Hello McCall!

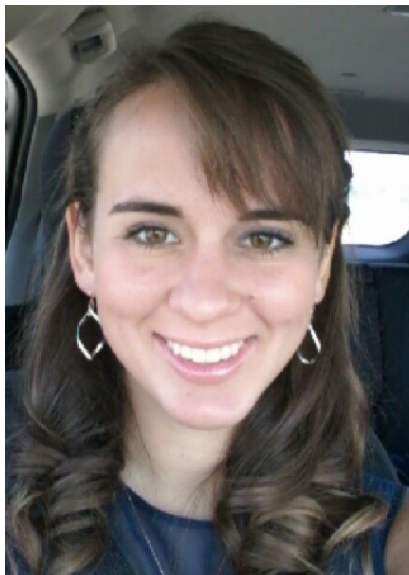
I am thrilled to be placed in such a beautiful and welcoming community! I was born and raised in Idaho, so I am excited to be a part of the 2018 TRUST program here in McCall. I grew up in the Payette-Fruitland area of Idaho, so I understand the vast need for primary care physicians to return to rural areas. I look forward to getting to know this community and learning from Dr. Ferguson and colleagues.

I obtained my Associate's degree from Treasure Valley Community College in Ontario, Oregon, and completed my Bachelor's degree from The College of Idaho majoring in Human Health and Performance in Caldwell, Idaho. For my medical experience, I worked as a scribe and as a unit coordinator/certified nursing assistant for St. Alphonsus Medical Center Emergency Department in Ontario, Oregon. Additionally, I volunteered with hospice and the Red Cross over the past seven years. My time spent working and volunteering in the medical field inspires me to make a difference in a rural community.

My hobbies include getting outdoors and exploring new areas, so I am excited to discover all that McCall has to offer. As the daughter of a farmer, my heart is with those of rural communities and I understand the struggles that small towns face in obtaining proper medical care. I'm very thankful to be a part of this great program at such a fantastic site.

I am looking forward to meeting everyone!

Grace Meeker



### **Contacts**

Maureen Ferguson, MD  
St. Luke's Clinic—Payette  
Lakes Family Medicine  
211 Forest Street  
McCall, ID 83638  
208-634-2225

Mary Barinaga, MD  
Idaho Assistant Dean  
Regional Affairs, UWSOM  
322 E. Front St., Ste. 590  
Boise, ID 83702  
(208) 364-4548