

FAS Facial Photographic Analysis Software

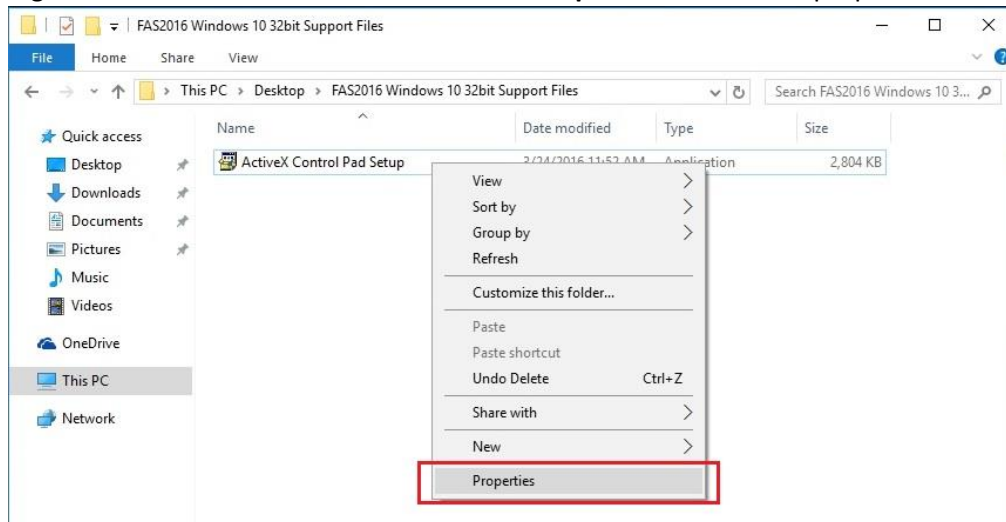
ActiveX Control Pad Installation

The FAS Facial Photographic Analysis Software will currently install and run in any Windows operating system provided Office 32-bit is installed. However, in cases wherein Office 32-bit is not installed or an existing Office 64-bit is installed, the FAS application will not run. In this case, the user needs to install the free Microsoft ActiveX Control Pad to make the FAS application work.

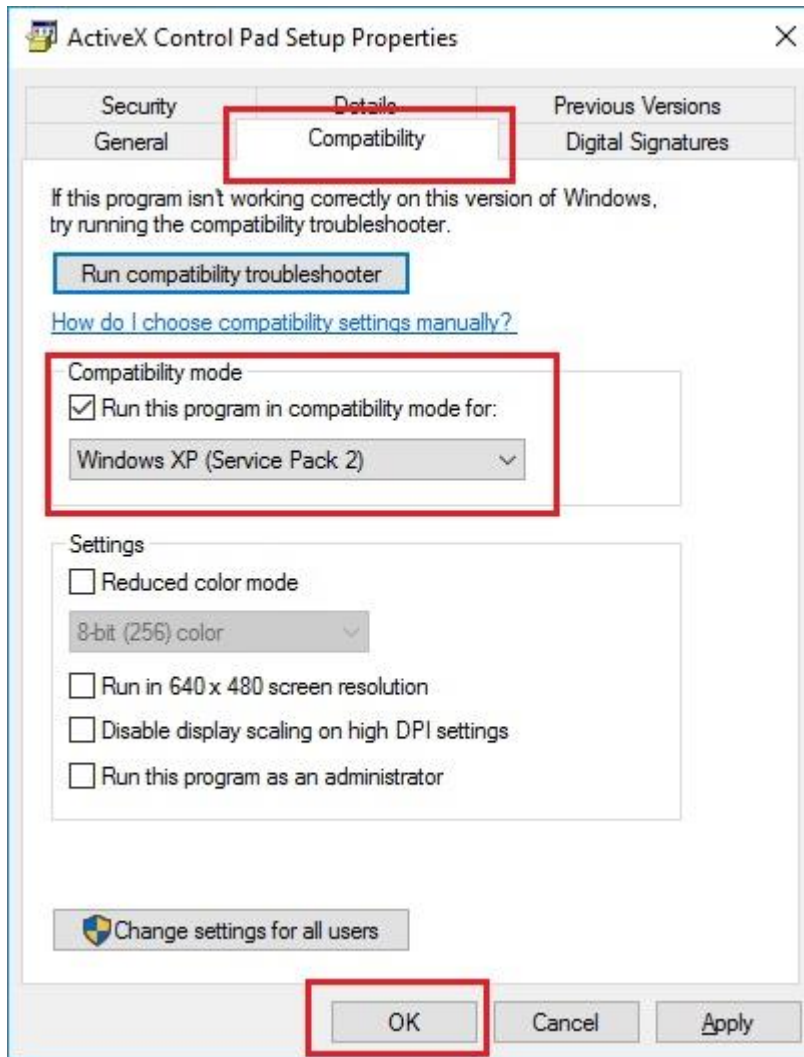
1. Download the '**FAS2016 ActiveX Control Pad**' executable file to your computer desktop from the FASDPN website.

<http://depts.washington.edu/fasdpn/htmls/software-specs.htm>

2. Right-click on the file '**ActiveX Control Pad Setup.exe**' then click on properties



- a. Click the '**Compatibility Tab**'
- b. Check the checkbox '**Run this program in compatibility mode for:**'
- c. Select '**Windows XP (Service Pack 2)**' from the drop down list
- d. Click **OK**

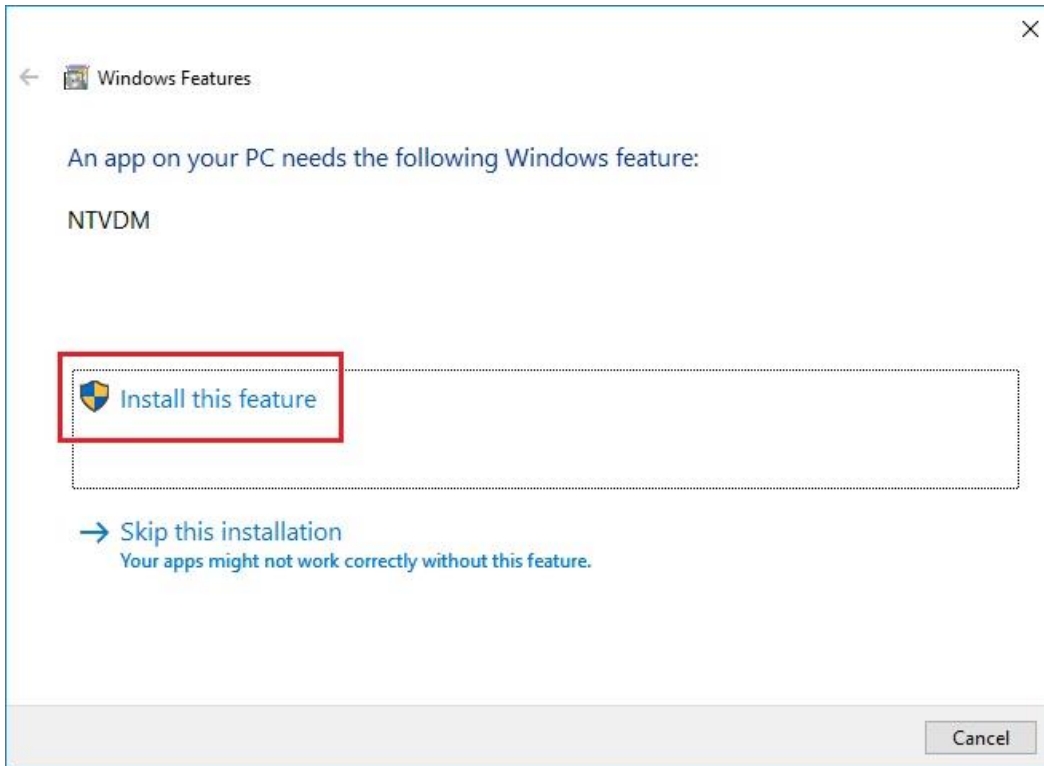


3. Now you can run the 'ActiveX Control Pad Setup' by double-clicking it
4. It may ask 'Do you want to allow this app to make changes to your PC?'. Click the 'Yes' button.

5. Click **Yes** to accept the End-User License Agreement

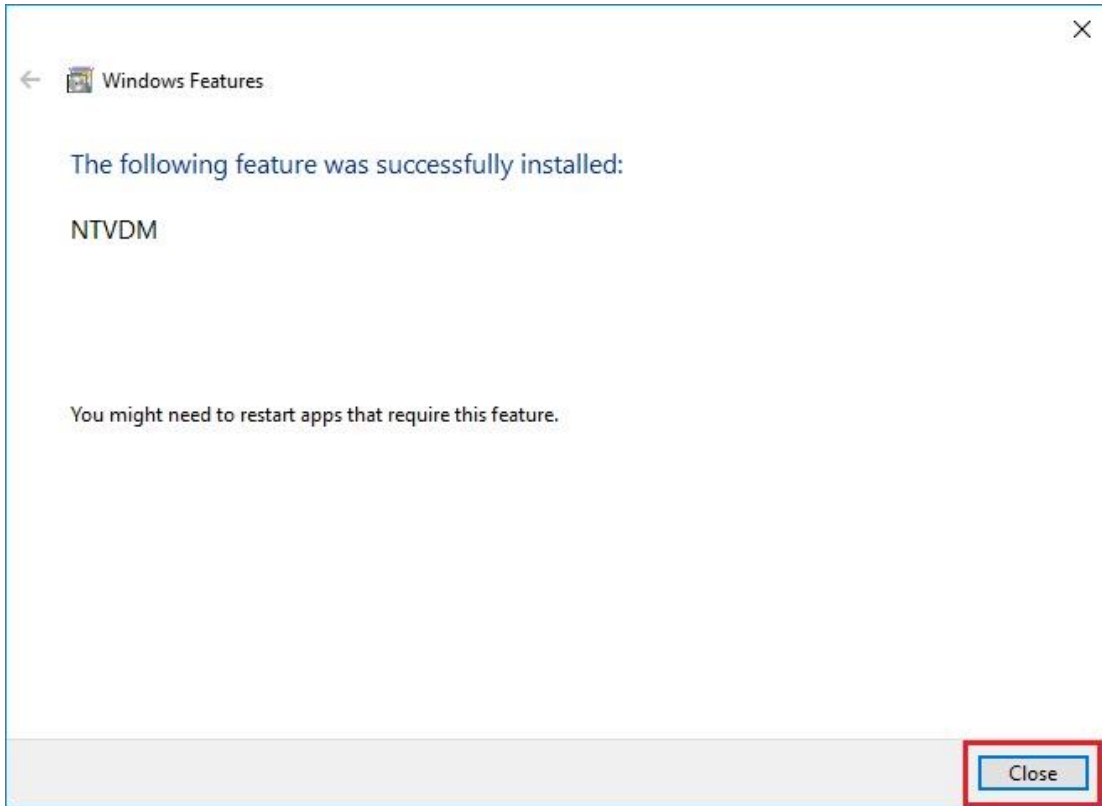


6. A window will pop-up asking to install the NTVDM feature **if your system doesn't have it yet**. Click the **Install this feature** button.



NTVDM is process that belongs to the Windows 16-bit Virtual Machine. It provides an environment for a 16-bit process to execute on a 32-bit platform.

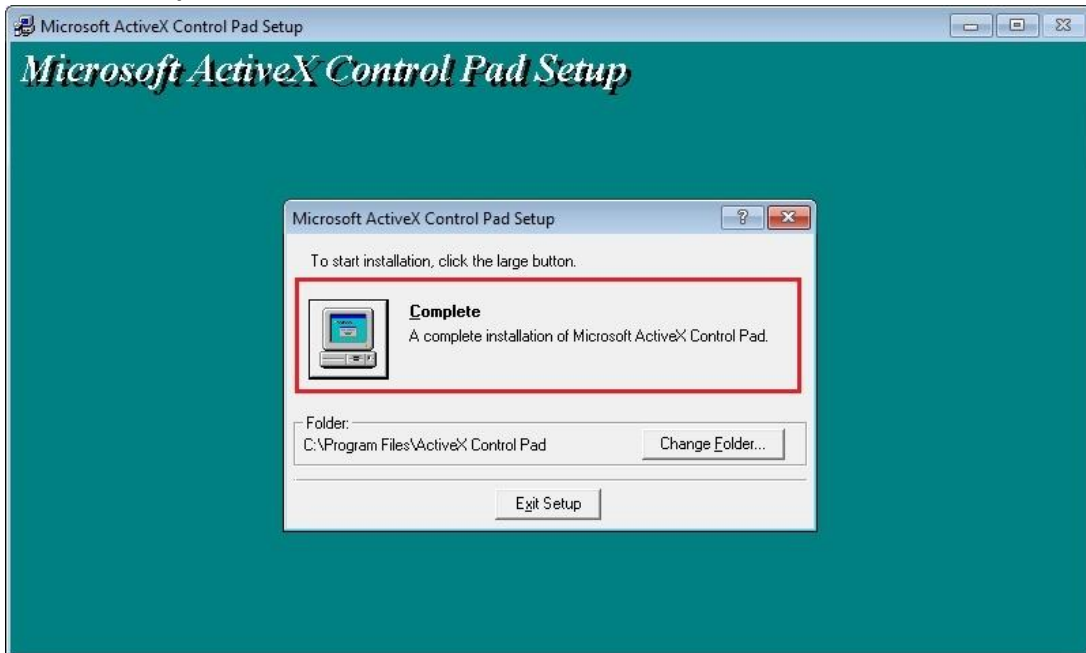
7. After the feature is installed, you'll see a pop-up window saying NTVDM feature was successfully installed. Click the 'Close' button.



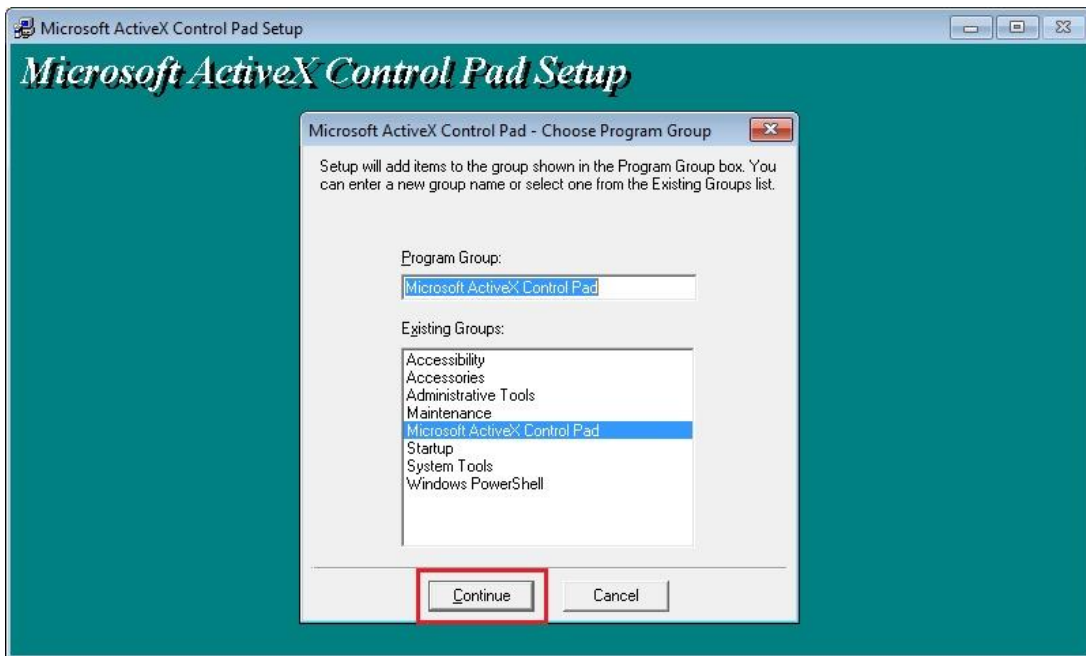
8. You'll then see another window to install the Microsoft ActiveX Control Pad Setup. Click the 'Continue' button.



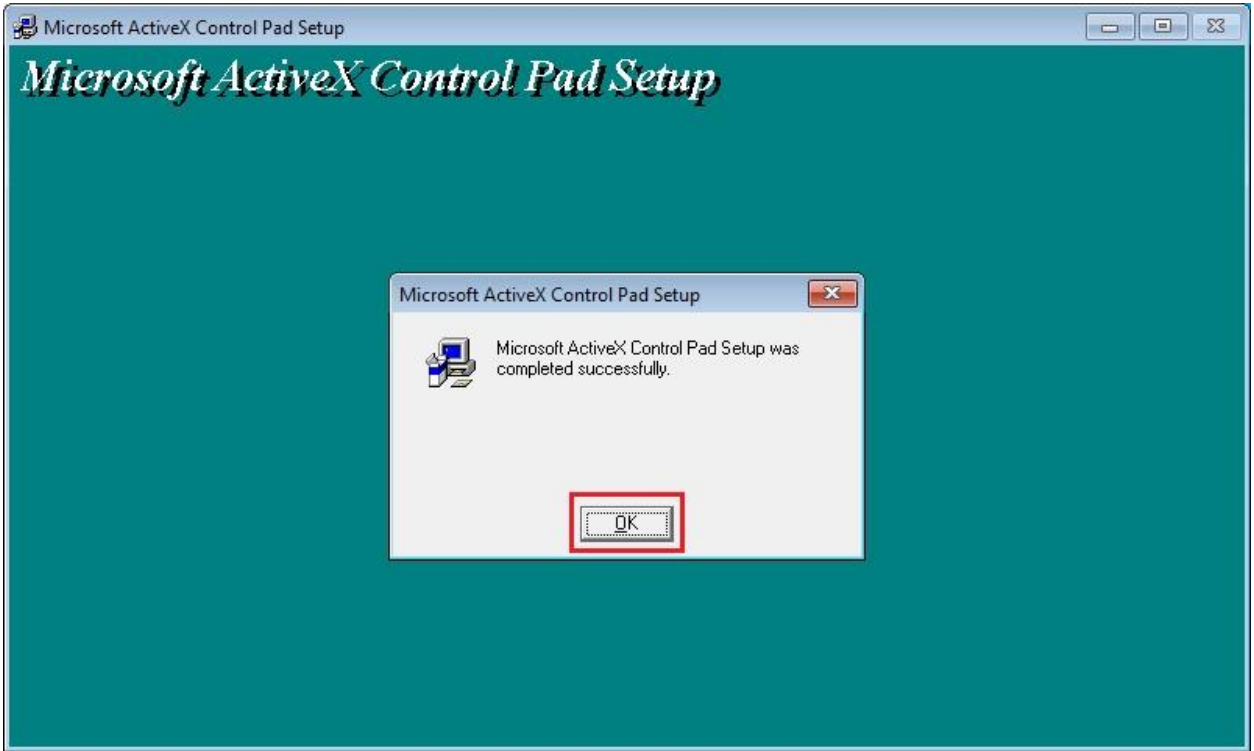
9. Click the **'Complete'** button to do a full installation



10. Click the **'Continue'** button



11. Click the **OK** button to finish the installation



12. You can now install or run the FAS application. Installation of the FAS application can be done before or after the ActiveX Control Pad installation.