



GPSS Senate Meeting

April 5th, 2017



Call to Order



Approval of Agenda



Approval of Minutes



Services and Activities Fee

Abe McClenny





Services & Activities Fee Committee

ABE MCCLENNY | COMMITTEE CHAIR

“Student levied, student distributed fee to **support and enhance** the out of class experience...and enrich the **cultural, emotional, intellectual, physical, and social well being** of the student.”

SAF TODAY

SAF FEE

Fee Level:
\$129

Collections FY 17:
\$15,800,000

Requests FY 18:
\$18,400,000

Units Supported:
17

IMA FEE

Fee Level:
\$32

Collections FY 17:
\$3,800,000

Loan Amount:
\$49,000,000

Loan Term:
2000 - 2030

FACILITIES FEE

Fee Level:
\$70

Collections FY 17:
\$8,400,000

Loan Amount:
\$150,000,000

Loan Term:
2011 - 2041

SAF STRUCTURE

ASUW



6 Committee Members
(Includes F&B Director
and 1 from Senate)

GPSS



5 Committee Members
(Includes Treasurer)

Admin



3 Non-Voting Members

UNITS



Associated Students of the University of Washington



The Husky Union Building



CAMPUS SUSTAINABILITY FUND

UNIVERSITY OF WASHINGTON

Campus Sustainability Fund



Q Center



Counseling Center



Recreational Sports Program



PURPOSE

BACKGROUND

HIGHLIGHTS

GOALS

FUTURE

UNITS



Samuel E. Kelly Ethnic Cultural Center

Student Parent Resource Center

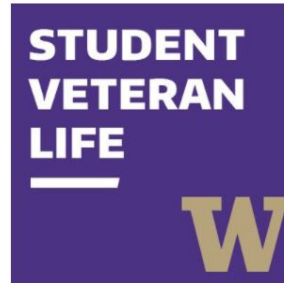
Graduate and Professional Student Senate



Student Publications/UW Daily

Hall Health and Primary Care Center

Health and Wellness, Peer Health Educators



PURPOSE

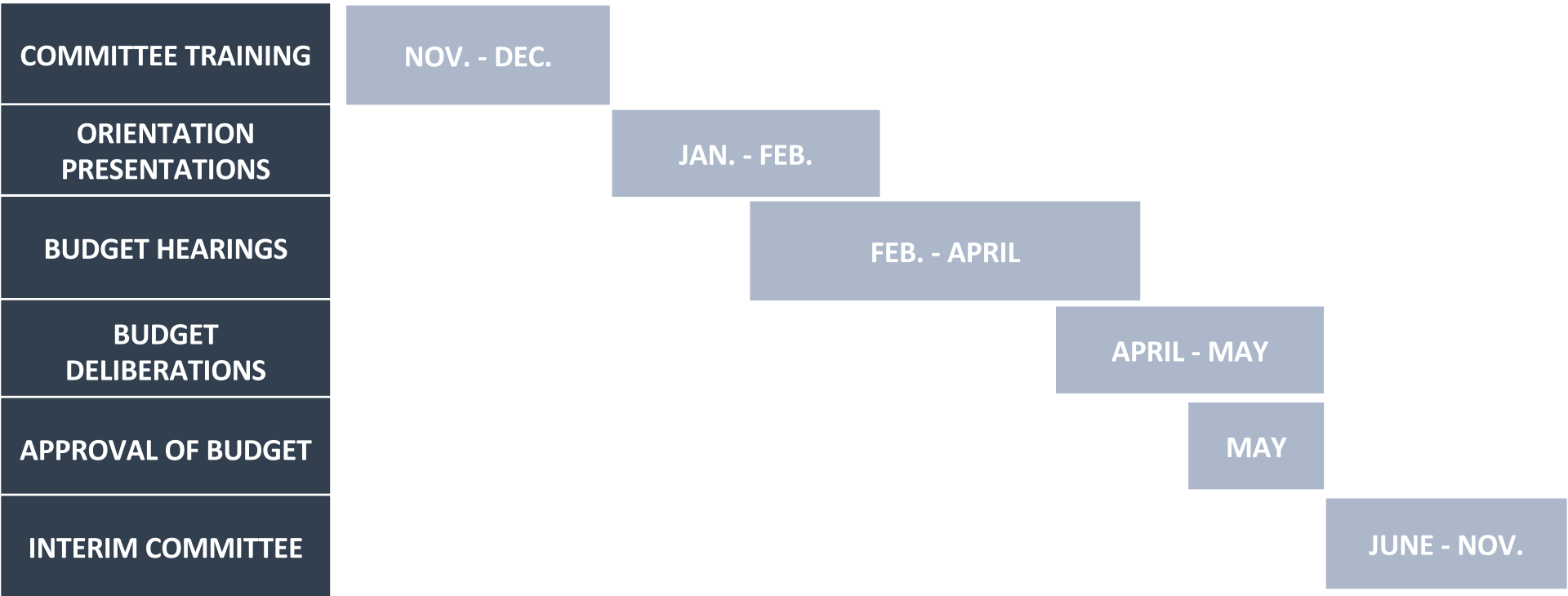
BACKGROUND

HIGHLIGHTS

GOALS

FUTURE

COMMITTEE TIMELINE



PURPOSE

BACKGROUND

HIGHLIGHTS

GOALS

FUTURE

unit highlights

STUDENT PARENT RESOURCE CENTER

- ✓ Quarterly application, DEL requirements
- ✓ Increased utilization to 90% (343 students)

STUDENT PUBLICATIONS

- ✓ Two days print, shift to online content
- ✓ Web traffic up 40%, \$87k profit increase YTD

wələbʔaltx^w

- ✓ Established ongoing support as SAF unit
- ✓ Increasing programing and partnerships

STUDENT VETERAN LIFE

- ✓ Strong community built in a very short time
- ✓ Veteran Support Specialist (SAF and State)

key goals

FEE DECOUPLING



***enable changes
independent of
tuition***

***currently in senate
ways & means***

MENTAL HEALTH



***equitable pay and
retention, capacity***

***in SAF budget
proposals***

BOND FUNDS



***determine utilization
of surplus***

***in talks with
treasury and
committee***

PURPOSE

BACKGROUND

HIGHLIGHTS

GOALS

FUTURE

SAF + GPSS ➤

In what ways can SAF and GPSS **engage** going forward to **improve the student experience at UW?**

What needs of GPSS constituents are currently unmet, and how can SAF be involved?

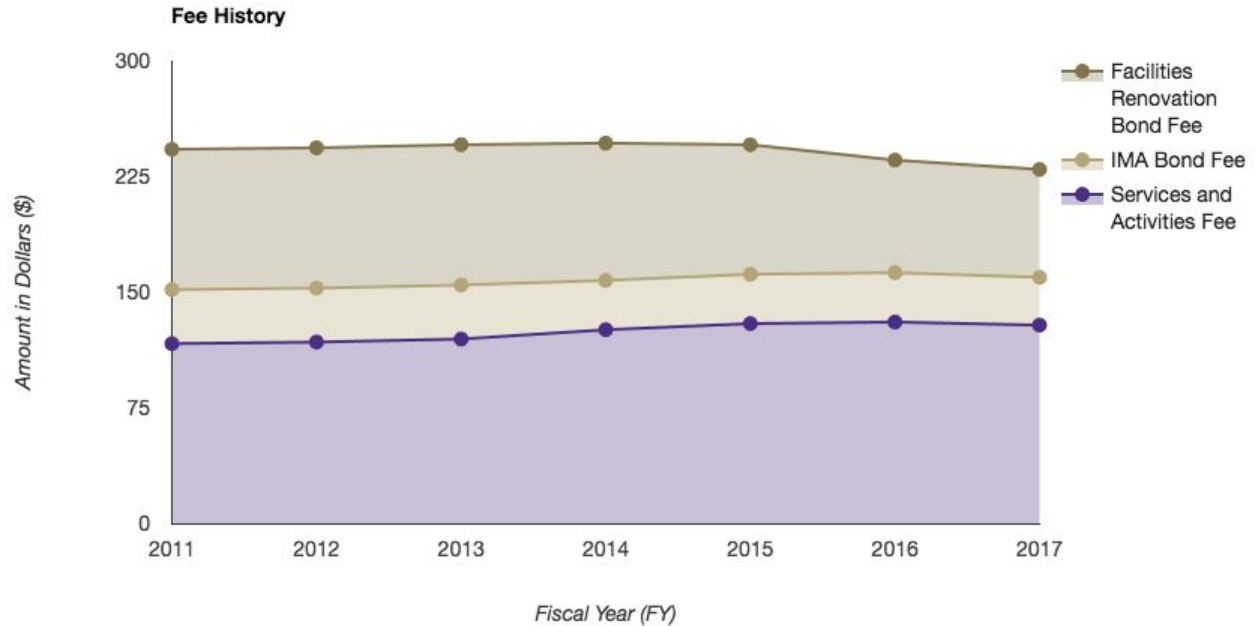
How can SAF best communicate with and work with GPSS on these issues?

FEE HISTORY

SAF Fee: \$129

IMA Fee: \$32

Facilities Fee: \$70



DEFICIT SPENDING

	Amount	Fee	Fee Increase	Percent Increase
FY17 Allocations:	\$ 17,076,006	\$ 139	\$ 10	7.75%
+D Center Advisor	\$ 36,892			
+Intellectual House	\$ 152,300			
	\$ 17,265,198	\$ 141	\$ 12	9.30%
+Other Innovation	\$ 96,986			
	\$ 17,362,184	\$ 141	\$ 12	9.30%
+SPRC	\$ 258,519			
Current Allocations	\$ 17,620,703	\$ 143	\$ 14	10.85%
+Loading Rates	\$ 226,821			
FY18 Obligations	\$ 17,847,524	\$ 145	\$ 16	12.40%
Current Collections	\$ 15,785,000			
Deficit FY18	\$ 2,062,524			
Deficit FY17	\$ 1,835,703			

The background of the slide is a close-up photograph of numerous pink cherry blossoms. The flowers are in various stages of bloom, with some showing vibrant pink petals and others appearing more delicate and white. The lighting is soft, creating a gentle, warm atmosphere. A semi-transparent pink horizontal band is overlaid across the middle of the image, serving as a backdrop for the text.

Counseling Center

Natacha Foo Kune, Director



SAGE Update

SUMMARY

What is SAGE?

- “Student Advocates for Graduate Education”
- A coalition of 16 member institutions representing 150,000+ grad students at Tier R1 Public AAU Universities.
- GPSS is a founding member.

What do we do at Day on the Hill?

Business Days: officer elections, discussions, legislative training, white paper creation.

Meeting Days: One day is reserved for meetings with elected officials of the state of Washington, one day is reserved for groups of different SAGE delegates for meetings with officials from across the country.

SAGE Meetings

Washington:

- Senator Patty Murray
- Rep Pramila Jayapal
- Rep Adam Smith
- Rep Rick Larsen
- Rep Suzan DelBene
- Rep Cathy McMorris
Rodgers
- Rep Dave Reichert

Senators:

- Michael Bennet
- Todd Young
- Michael Enzi
- Ron Johnson
- Bob Casey
- John McCain
- Chris Murphy
- Amy Klobuchar
- Elizabeth Warren
- Tammy Duckworth
- Pat Toomey
- Tammy Baldwin
- Chuck Schumer
- Bill Cassidy
- Johnny Isakson
- Sherrod Brown

Reps:

- Lee Zeldin
- Katherine Clark
- Mark DeSaulnier
- Paul Tonko
- Rodney Davis
- Raul Grijalva
- Jared Polis
- Suzanne Bonamici
- Barbara Comstock
- Raja Krishnamoorthi
- Brett Guthrie
- Joyce Beatty
- Glenn Grothman

TOTALS: 36 Meetings with 17 Senators, 19 Representatives, from 18 different states

Themes and Notes

- GPSS presented four white papers, written by SAGE on Research Funding, Immigration, Student Debt, and Sexual Assault.
- White Papers available on SAGECoalition.org (or ask James/Matt!)

RESEARCH FUNDING

ASKS:

- Increase federal investment in basic research including NIH, NSF, DOE, DOD.
- Oppose White House proposed cuts to grant providing agencies including EPA, NIH, NOAA, NEA, NEH.
- Oppose changes to Budget Control Act of 2011.
- Oppose limits to scientific autonomy.

Notes:

- Any decrease in NIH and NSF funding is a non-starter for nearly everyone.
- NOAA, NEA, NEH sustenance positive with most offices, more popular among democrats.
- EPA is cause for concern, GOP offices less confident.

ACTION

Tell your story! Call your legislative office and tell them what you do and why you need funding. Collect stories of others and send them formally to legislative offices.

IMMIGRATION

ASKS:

- H1B Visa Reform:
 - Exempt advanced degrees from the cap
 - Continue OPT periods
 - Reintroduce STAPLE Act to exempt PhD holders from H1B Caps.
- BRIDGE Act:
 - Support continuation of DACA

Notes:

- Most offices were pro general protections but didn't report much. Democrats much stronger on visa reform, Bridge Act
- Emphasis on the power of international students in economy was taken well.
- Multiple Dear Colleague letters

ACTION

Ask legislators to support/sign on to Dear Colleague Letters about H1B (Jayapal) and H2B (Comstock). Push loudly for continuation of DACA.

SEXUAL ASSAULT

ASKS:

- Support Campus SaVE (Sexual Violence Elimination Act)
- Support CASA
 - Support expanded campus resources
 - Mandatory trainings for students and faculty.

**University of Washington admin does not support CASA.

Notes:

- Many offices listened well to *passionate* stories.
- Democrats listened much better to CASA, non-starter for most Republican offices.
- Most offices seem to be working on Title IX issues
- WA delegation seems strongest.

ACTION

Tell an individual story about why trainings, resources, and support is integral. Push WA delegation to champion these issues.

STUDENT DEBT

ASKS:

- Reform tax code to prevent forgiven dollars on student loan repayment plans to be included as taxable income.
- Protect and support existing student loan repayment programs (PAYE, REPAYE, IBR, IDR, PSLF)

Notes:

- Tax reform ask stuck well with all offices, no champions, however. Seems like an issue for future years.
- Most offices aim to protect repayment programs, Rs have concern with equity within PSLF and other programs.

ACTION

Push offices to include forgiven loans ask in part of any future tax reform discussions.
React to any news of elimination of student loan programs.

OLYMPIA

Status Quo: Fiscal cutoff has passed, all that remains in budget reconciliations for capital and operating budgets.

What is still alive?

- SB 5764 - Notifications on transcripts for students suspended/dismissed because of SV. Exempts survivors from public.
- SB 5022 - Periodic notifications about loan debt.
- HB 1561 - Open Educational Resources
- HB 2037 - Extends disability task force.

Operating Budgets

House:

- Tuition freeze, included backfill.
- Expanded SNG coverage by 6,000 students.
- Increase for WWAMI/RIDE

Senate:

- No tuition freeze
- No SNG expand.
- ½ funded 5525
- WWAMI/RIDE increase.

Capital Budgets

House:

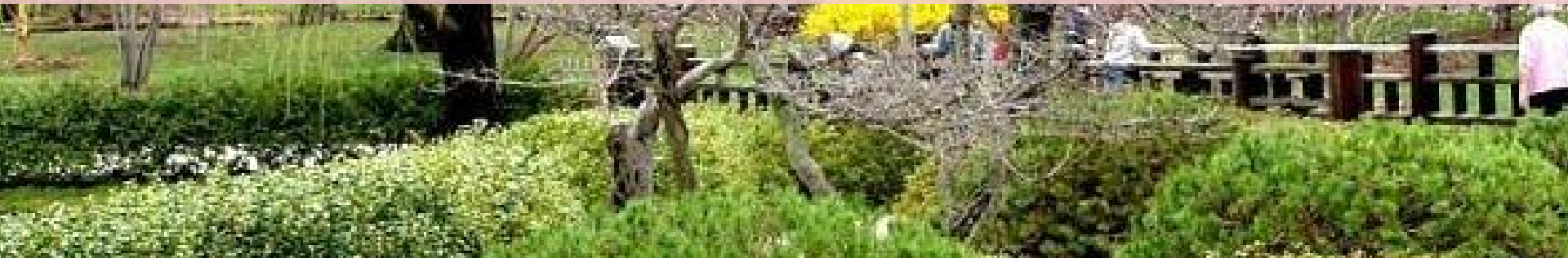
- T-Wing 60m
- Maintenance (not all)
- 20m Pop Health
- No Parrington
- No seismic

Senate:

- Funds Pop Health
- Parrington rens
- 10m for TWing
- Seismic upgrades
- Full ask for maintenance



Good of the Order





Officer Reports

Vice President of Internal Affairs

SPRING EVENTS!!!

- Spring Social : May 4th
- “Out in the City” Mariners Game
 - Sunday, May 7th
 - Tix on sale April 24th @ Lander Desk
- Husky Sunset : June 1st

**Graduate Student
Experience Committee -
Still accepting new
members!**

Upcoming Program Review Site Visits:

- Department of Genome Sciences:
April 6-7th
- Department of Mechanical
Engineering: April 20-21st
- Department of Rehabilitation
Medicine: April 24-26th

Vice President of External Affairs

- Continued lobbying in Olympia
 - Trying to make SB 5525 Necessary to implement in the budget “NTIB”
 - Ensuring Parrington, seismic renovations are included in final capital budget.
 - Senate feelings on tuition freeze?
- Channeling SAGE Energy
 - Creating lasting connections with offices (both local and far)
 - Position statements on new bills (Jayapal’s debt)

ADVOCACY DAYS

Look for more information on GPSS advocacy days to come into the office, grab food, and make calls to your legislators!

Pac-12 Coalition

2nd official meeting of the Pac 12 Graduate Student Coalition occurring at the end of the month.

Fee-Based Programs

- Continued push for university to implement Fee-Based transparency.

Secretary

- Community Outreach
Event probably in May
- Diversity Funding still
going!
- BIG SPRING QUARTER
PROJECT:
 - GPSS Official Archive
 - Office organization
 - Promotional Material

FIRST NATIONS POWWOW
SATURDAY Alaska Airlines
Arena

**STUDENT REGENT APPLICATION:
OPEN
DUE: APRIL 14th!**

Officer Elections Coming Up!
Meetings to qualify you:
April 5 (Senate)
April 12 (Executive)
April 19 (Senate)
April 26 (Executive)
May 3 (Senate)
May 10 (Executive)

Treasurer

- GPSS FY18 budget was presented to the SAF committee on March 31
- SAF budget deliberations will take place in the next few weeks
- There have been some problems processing Departmental Allocations and Travel Grants- hope to remedy this soon! Thanks for your patience!
- Spring Travel Grant application now open
 - For conferences May 11- August 31
- If you're interested in serving on the Finance & Budget committee please contact me!
 - F&B meetings: Thursdays 3:30- 4:30pm

GPSS Special Allocations Funded Spring events:

- **UW Night Market:**
 - **May 13 5:30- 10:30pm, Red Square**
 - Taiwanese Student Association
- **Malaysian Night:**
 - **May 14 2-6pm, Intellectual House**
 - Malaysian Student Association
- **Afro-Caribbean Night:**
 - **May 14 12:30pm, Kane 130**
 - African Student Association
- **Matsuri:**
 - **May 6 5-9pm, HUB ballroom**
 - Japanese Student Association
- **Filipino Night 2017:**
 - **May 20 5:30-9pm, Kane Hall**
 - Filipino American Student Association
- **Keraton 2017:**
 - **April 29, Rainier Vista**
 - Indonesian Student Association
- **UW Worker Memorial Day:**
 - **April 27 11:30am-1:30pm, HUB Lyceum**
 - Dept of Environmental and Occupational Health Sciences Student Advisory Committee

President

SAGE in D.C. on Mar. 26-30

: hours of planning, all day long meetings, endless *walking*, while missing the whole first week, but UW delegates worked hard and excited



Presenting a **Graduate Student Panel**
at the Board of Regents on April 14th(Wed)

ISHIP (Int'l Student Health Insurance Plan)
- there could more than 4% rate change



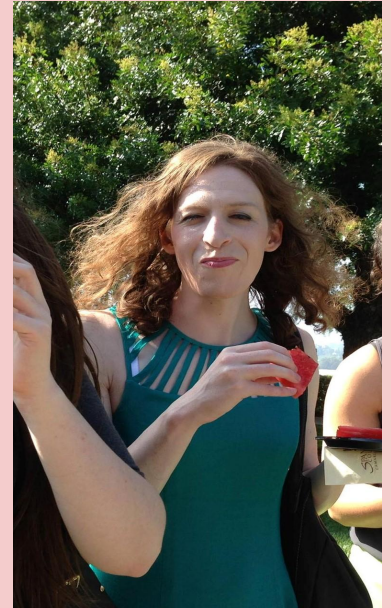
President

Fee-Based Programs: PCE & Grad School will work together for the Fall BOR presentation with GPSS' suggestions

One vacancy for an Executive Senator position: an election at the next meeting; please contact execs and officers

Big Thanks to Erin Firth

for her amazing contribution to Exec, Senate, F&B, Travel Grants, SAF, STF, and many more for the last 5 years!



A close-up photograph of pink cherry blossoms in full bloom, filling the entire frame. The petals are a soft, vibrant pink, and the centers show yellow stamens. The background is slightly blurred, creating a sense of depth. A semi-transparent, light pink horizontal band is overlaid across the middle of the image, serving as a background for the text.

Announcements

Provost Baldasty Town Hall

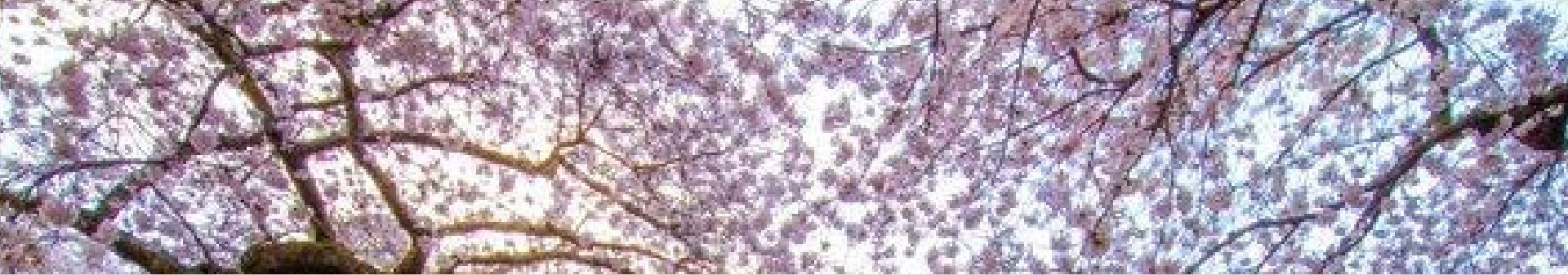
April 19th, 3:30-4:30 p.m.
at Henry Art Gallery

2017-2018 Student Regent Application

open online at

<https://catalyst.uw.edu/college/dropbox/manage/asuwpres/37782>

due April 14, 11:59 p.m.



Adjournment

