

Treatment Naïve and Treatment Experienced

Sofosbuvir + (Ledipasvir or GS-9669) +/- Ribavirin in GT-1 ELECTRON Trial (Arms 12-17 & 22)

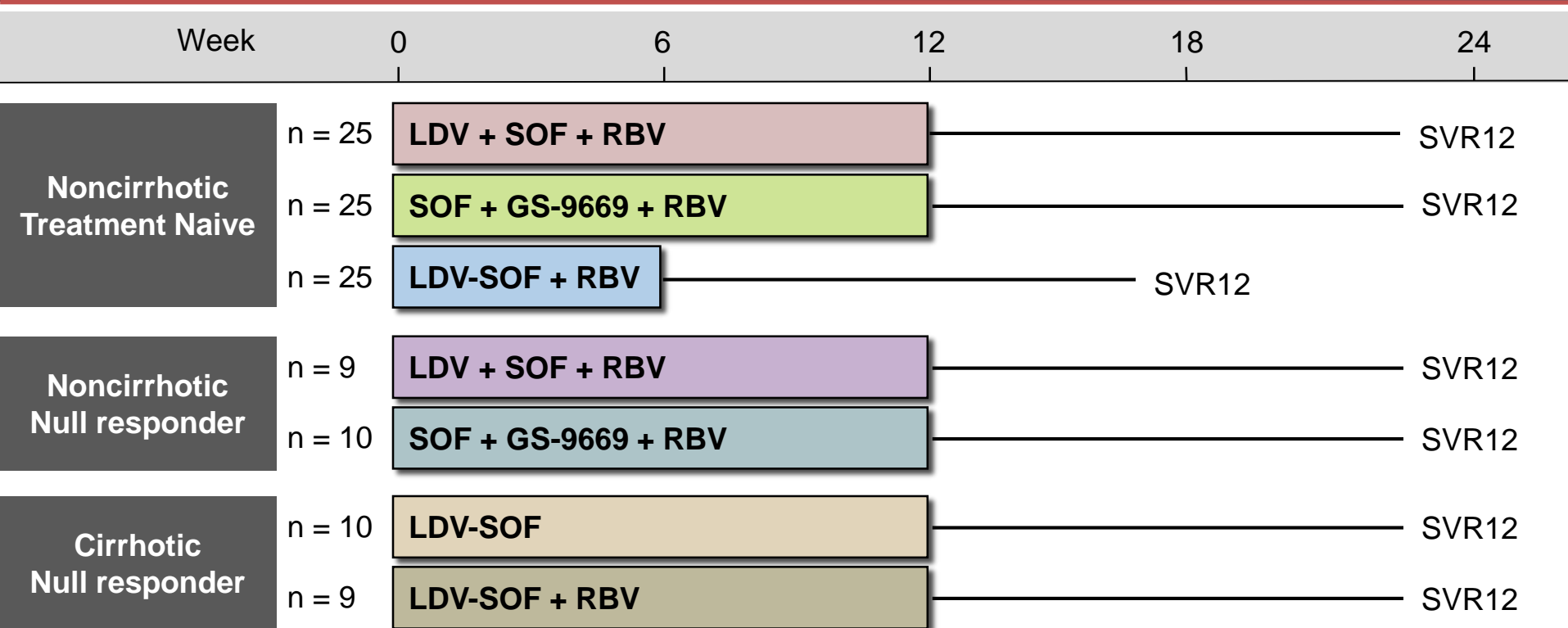
Source: Gane EJ, et al. Gastroenterology. 2014;146:736-43.

Sofosbuvir + (Ledipasvir or GS-9669) +/- Ribavirin in GT1 ELECTRON Trial (Arms 12-17 & 22): Features

ELECTRON Trial (Arms 12-17 & 22)

- **Design:** Open-label, phase 2, using sofosbuvir plus [ledipasvir or GS-9669] with or without ribavirin in treatment-naïve and treatment-experienced GT1
- **Setting:** two hepatitis treatment centers in New Zealand
- **Entry Criteria**
 - Chronic HCV Genotype 1
 - HCV RNA > 50,000 IU/mL
 - Age > 18
- **Patient Characteristics (range in different treatment arms)**
 - N = 113 patients enrolled
 - Three of seven groups were treatment naïve
 - Four of seven groups were treatment experienced with prior null response
 - Two groups of seven groups were treatment experienced and cirrhotic
 - Three treatment arms used fixed dose ledipasvir-sofosbuvir
- **Primary End-Point:** SVR12

Sofosbuvir + (Ledipasvir or GS-9669) +/- Ribavirin in GT1 ELECTRON Trial Arms (12-17 & 22): Design



Abbreviations: LDV= ledipasvir; SOF = sofosbuvir; RBV = ribavirin

Drug Dosing

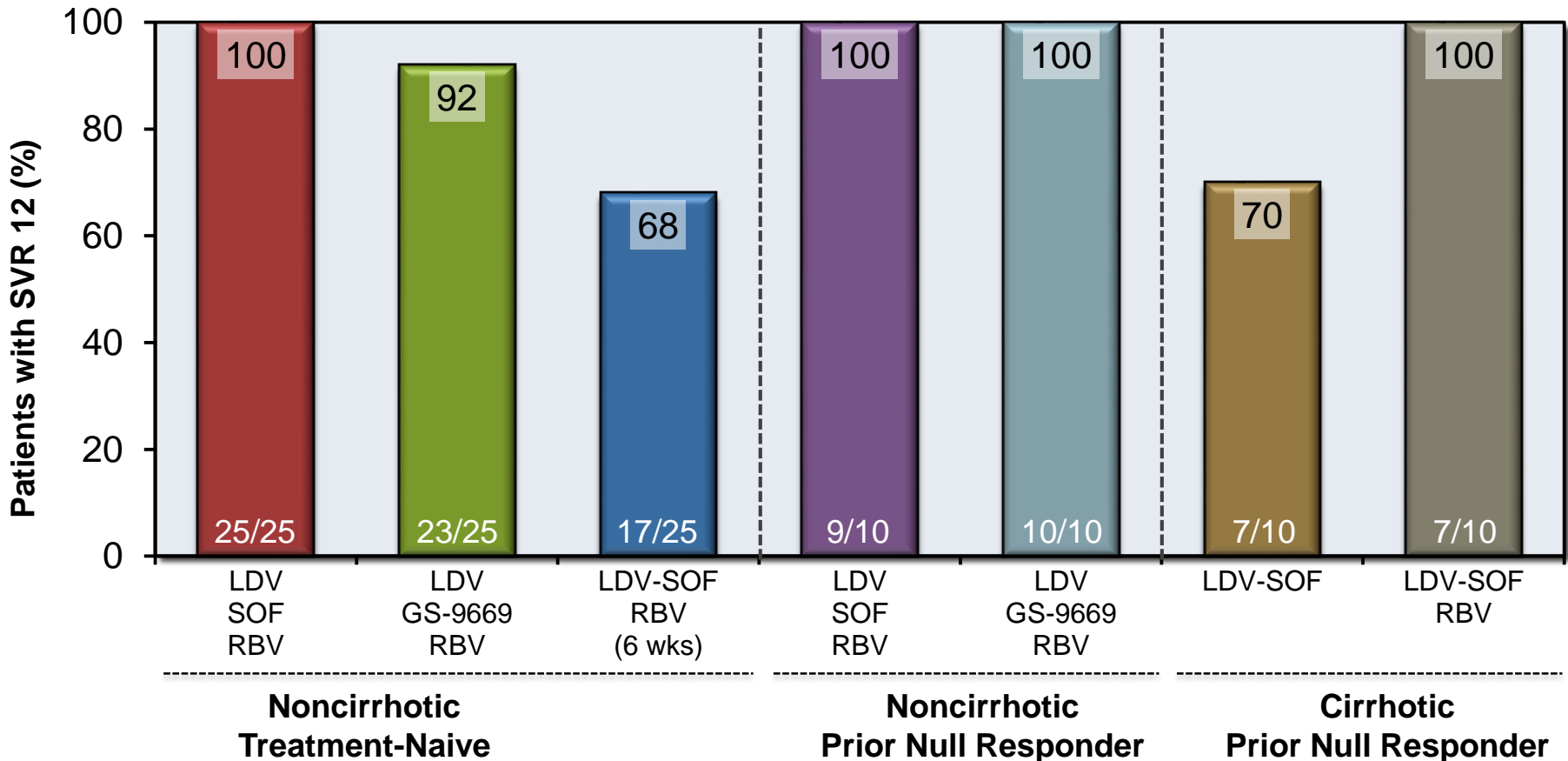
Sofosbuvir: 400 mg once daily; Ledipasvir: 90 mg once daily; GS-9669 = 500 mg once daily

Ledipasvir-sofosbuvir (90/400 mg): fixed dose combination one pill once daily

Ribavirin (weight-based and divided bid): 1000 mg/day if < 75kg or 1200 mg/day if ≥ 75kg

Sofosbuvir + (Ledipasvir or GS-9669) +/- Ribavirin in GT1 ELECTRON Trial (Arms 12-17 & 22): Results

ELECTRON TRIAL, SVR 12 by Treatment Regimen



*All regimens 12 weeks except treatment-naïve LDV-SOF + Ribavirin= 6 week regimen

Sofosbuvir + (Ledipasvir or GS-9669) +/- Ribavirin in GT1 ELECTRON Trial (Arms 12-17 & 22): Conclusion

Conclusions: “The combination of sofosbuvir and a second direct-acting antiviral agent is highly effective in treatment-naïve patients with HCV genotype 1 infection and in patients that did not respond to previous treatment.”

This slide deck is from the University of Washington's *Hepatitis C Online* and *Hepatitis Web Study* projects.

Hepatitis C Online

www.hepatitisc.uw.edu

Hepatitis Web Study

<http://depts.washington.edu/hepstudy/>

Funded by a grant from the Centers for Disease Control and Prevention.