

Glecaprevir-Pibrentasvir in GT 1-6 with Renal Disease EXPEDITION-4

Source: Gane E, et al. N Engl J Med. 2017;377:1448-55.

Glecaprevir-Pibrentasvir in Genotype 1-6 with Renal Disease

EXPEDITION-4: Study Features

EXPEDITION-4 Trial

- **Design:** Open-label single-arm phase 3 trial to evaluate the safety and efficacy of the fixed-dose combination of glecaprevir-pibrentasvir for 12 weeks in treatment-naïve and treatment-experienced patients with GT 1, 2, 3, 4, 5, or 6 chronic HCV infection with advanced renal insufficiency
- **Setting:** US, Canada, Europe, Australia and New Zealand
- **Key Eligibility Criteria**
 - Age ≥ 18 years
 - Chronic HCV GT 1, 2, 3, 4, 5, or 6
 - Estimated eGFR < 30 ml/min/1.73m² (Stage 4 or 5 CKD)
 - HCV RNA $\geq 1,000$ IU/mL at screening
 - Naïve or treated with peginterferon +/- ribavirin (PR) or PR +/- sofosbuvir
 - Without cirrhosis or with compensated cirrhosis
 - HIV or chronic HBV coinfection excluded
- **Primary End-Point:** SVR12

Glecaprevir-Pibrentasvir in Genotype 1-6 with Renal Disease EXPEDITION-4: Treatment Regimen

Week

0

12

24

GT 1-6
CKD stage 4-5

Glecaprevir-Pibrentasvir
(n = 104)

SVR12

Abbreviations: CKD = chronic kidney disease

Drug Dosing: Glecaprevir-pibrentasvir (100/40 mg) fixed dose combination; three pills once daily

Glecaprevir-Pibrentasvir in Genotype 1-6 with Renal Disease EXPEDITION-4: Baseline Characteristics

Baseline Characteristic	Glecaprevir-Pibrentasvir (n = 104)
Mean age (range), years	57 (28-83)
Male sex, n (%)	79 (76)
Race, n (%)	
White	64 (62)
Black	25 (24)
Asian	9 (9)
Other	6 (6)
Median body-mass index (range)	26 (18-45)
Compensated cirrhosis, n (%)	20 (19)

Glecaprevir-Pibrentasvir in Genotype 1-6 with Renal Disease EXPEDITION-4: Baseline Characteristics

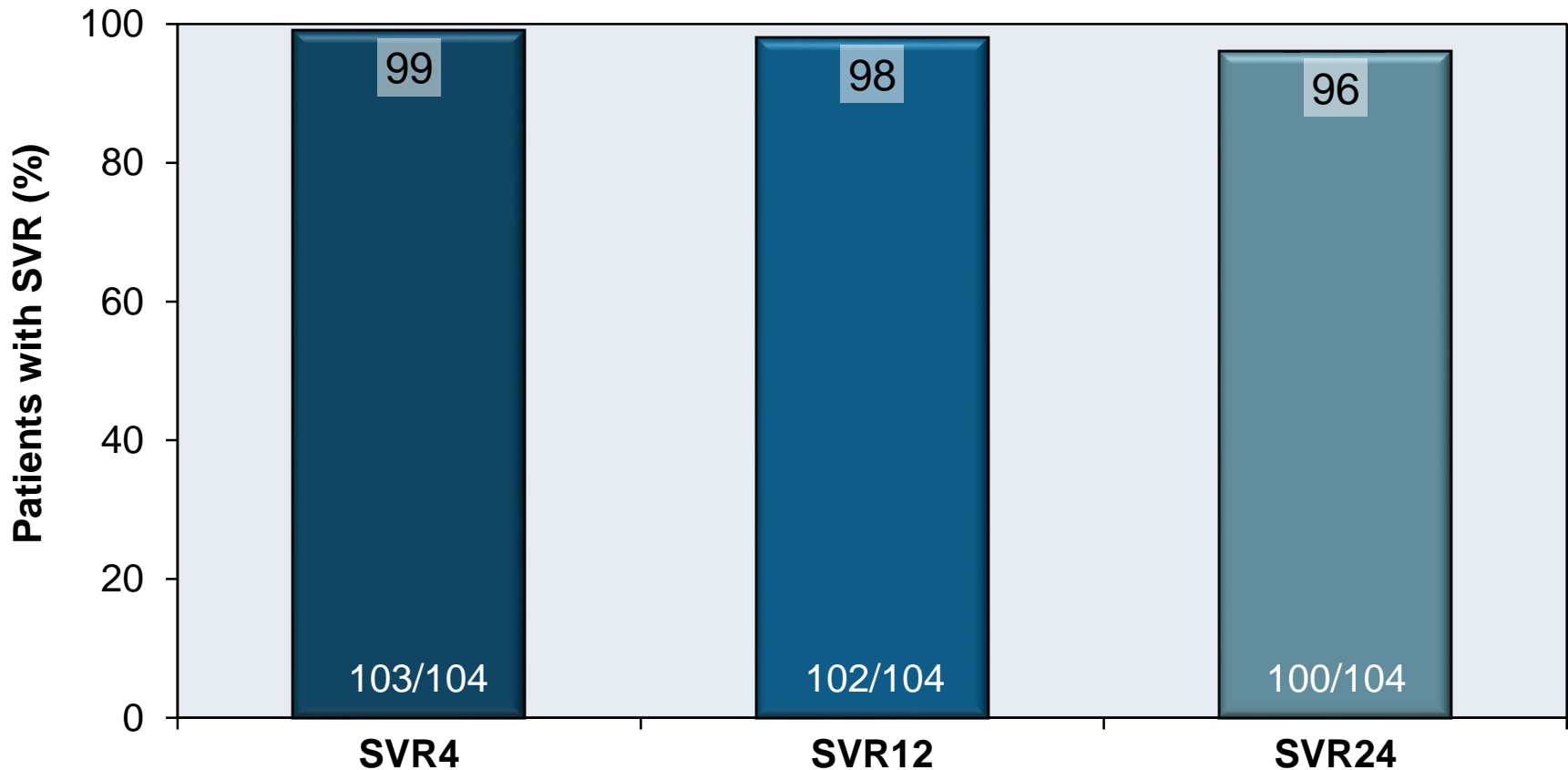
Baseline Characteristic	Glecaprevir-Pibrentasvir (n = 104)
Median HCV RNA level, log ₁₀ IU/mL (range)	5.9 (3.4-7.5)
HCV Genotypes, n (%)	
1a	23 (22)
1b	29 (28)
1 (other)	2 (2)
2	17 (16)
3	11 (11)
4	20 (19)
5	1 (1)
6	1 (1)
HCV Treatment History, n (%)	
Treatment-Naïve	60 (58)
Interferon (or Peginterferon) ± Ribavirin	42 (40)
Sofosbuvir and Ribavirin ± Peginterferon	2 (2)

Glecaprevir-Pibrentasvir in Genotype 1-6 with Renal Disease EXPEDITION-4: Baseline Characteristics (Renal)

Baseline Characteristics (Renal)	Glecaprevir-Pibrentasvir (n = 104)
eGFR in patients not undergoing hemodialysis, mL/min/1.73 m ²	20.6 ± 8.0
CKD stage, n (%)	
Stage 4	14 (13)
Stage 5	90 (87)
Hemodialysis, n (%)	85 (82)

Glecaprevir-Pibrentasvir in Genotype 1-6 with Renal Disease EXPEDITION-4: Results

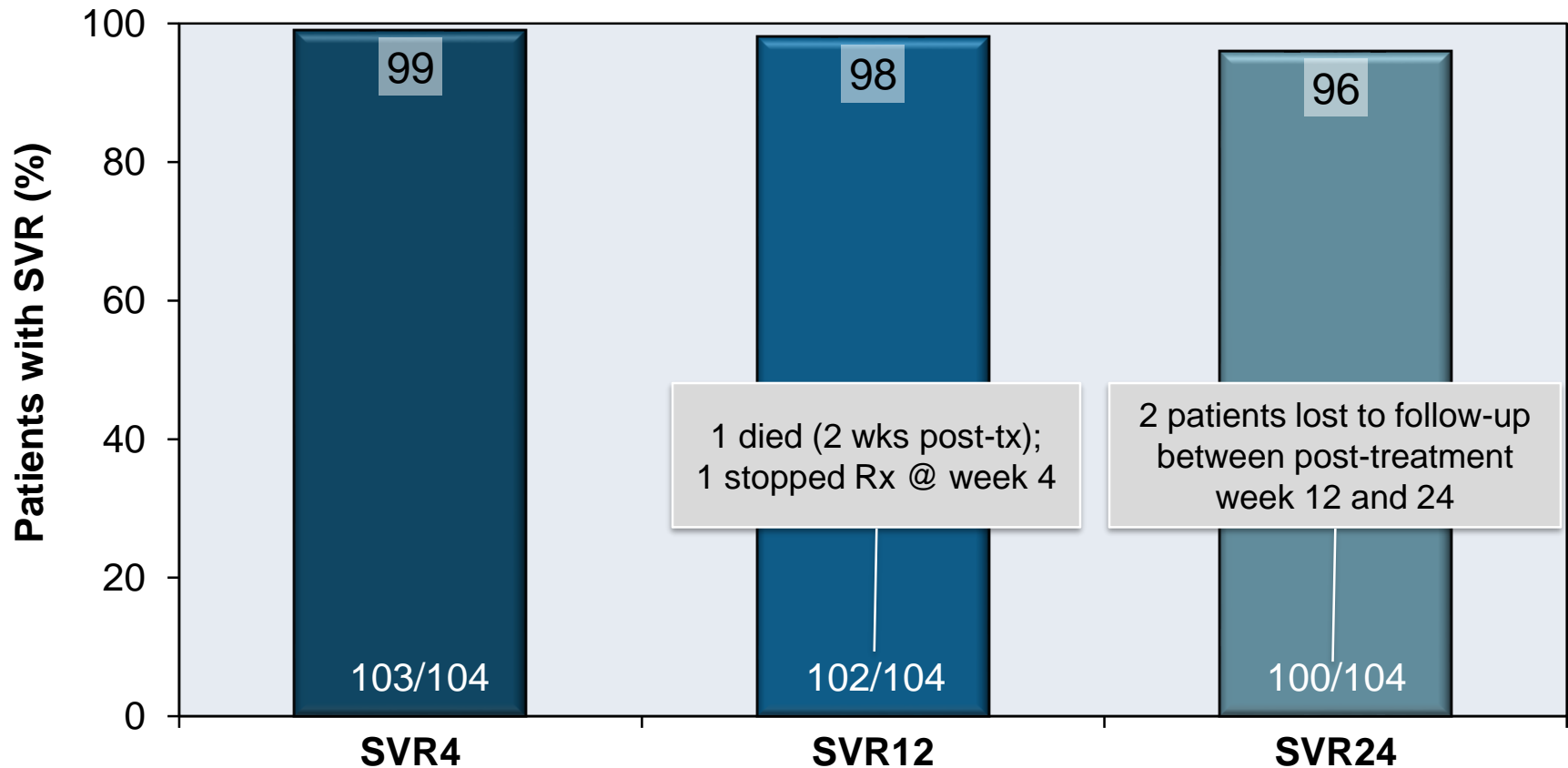
Sustained Virologic Response Rates (SVR)



Source: Gane E, et al. N Engl J Med. 2017;377:1448-55.

Glecaprevir-Pibrentasvir in Genotype 1-6 with Renal Disease EXPEDITION-4: Results

Sustained Virologic Response Rates (SVR)



Glecaprevir-Pibrentasvir in Genotype 1-6 with Renal Disease EXPEDITION-4: Adverse Events

Adverse Event (AE), n (%)	Glecaprevir-Pibrentasvir (n=104)
Serious AE	25 (24)
AE leading to treatment discontinuation	4 (4)*
Death	1 (1)#
AEs occurring in ≥10% of patients	
Pruritus	21 (20)
Fatigue	15 (14)
Nausea	12 (12)
Alanine aminotransferase >3 x ULN, grade ≥2	0
Total bilirubin >3x ULN, grade ≥3	1 (1)
Hemoglobin <8 g/dL, grade ≥3	5 (5)
*AEs not considered related to study drug	
#One death related to cerebral hemorrhage, post-treatment week 2, deemed not related to study drug.	

Source: Gane E, et al. *N Engl J Med.* 2017;377:1448-55.

Glecaprevir-Pibrentasvir in Genotype 1-6 with Renal Disease EXPEDITION-4: Adverse Events Conclusions

Conclusions: “Treatment with glecaprevir and pibrentasvir for 12 weeks resulted in a high rate of sustained virologic response in patients with stage 4 or 5 chronic kidney disease and HCV infection.”

This slide deck is from the University of Washington's *Hepatitis C Online* and *Hepatitis Web Study* projects.

Hepatitis C Online

www.hepatitisc.uw.edu

Hepatitis Web Study

<http://depts.washington.edu/hepstudy/>

Funded by a grant from the Centers for Disease Control and Prevention.