

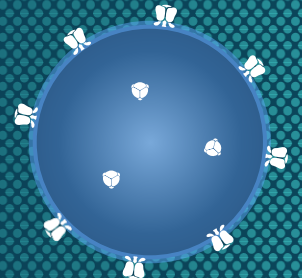


University of Washington  
Public Health Capacity Building Center

# Harborview Medical Center Madison Clinic Satellite Program

Robert D. Harrington, M.D.  
Professor of Medicine  
Medical Director, Madison Clinic

January 4<sup>th</sup>, 2016



# Harborview Madison Clinic

1982: First HIV case in Seattle

1985: HMC HIV clinic opens

Two ½ days per week

11 volunteer MDs, 1 MSW

2016: HMC Madison Clinic

~ 2900 patients

~ 35 providers (including 10  
ID fellows and 4 residents)

14 MSWs, health educator,  
nutritionist, nursing

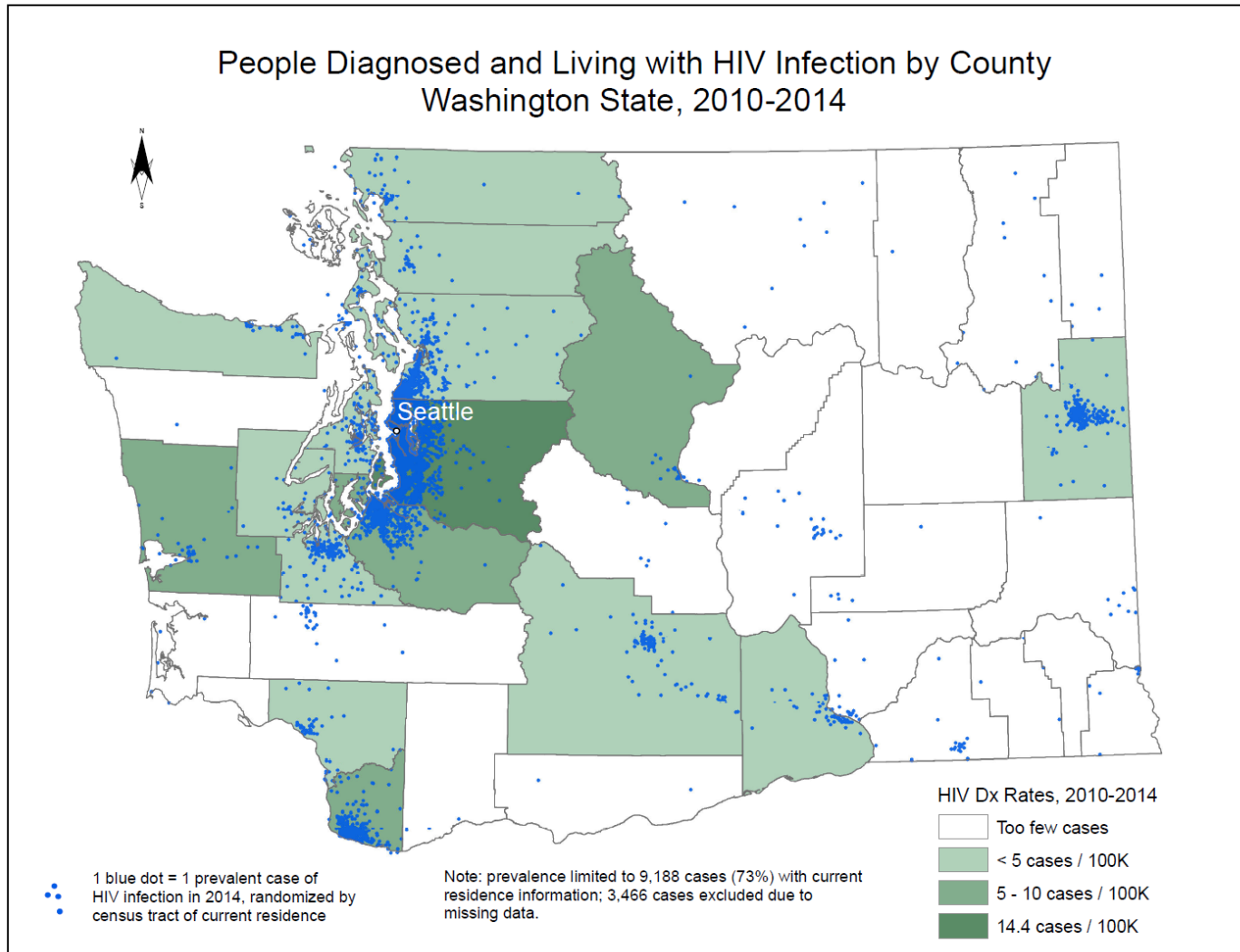
On-site pharmacy

On-site psychiatry, oncology  
neurology, dermatology

Connection to research: ACTU,  
CFAR, PIC, HVTN, HPTN

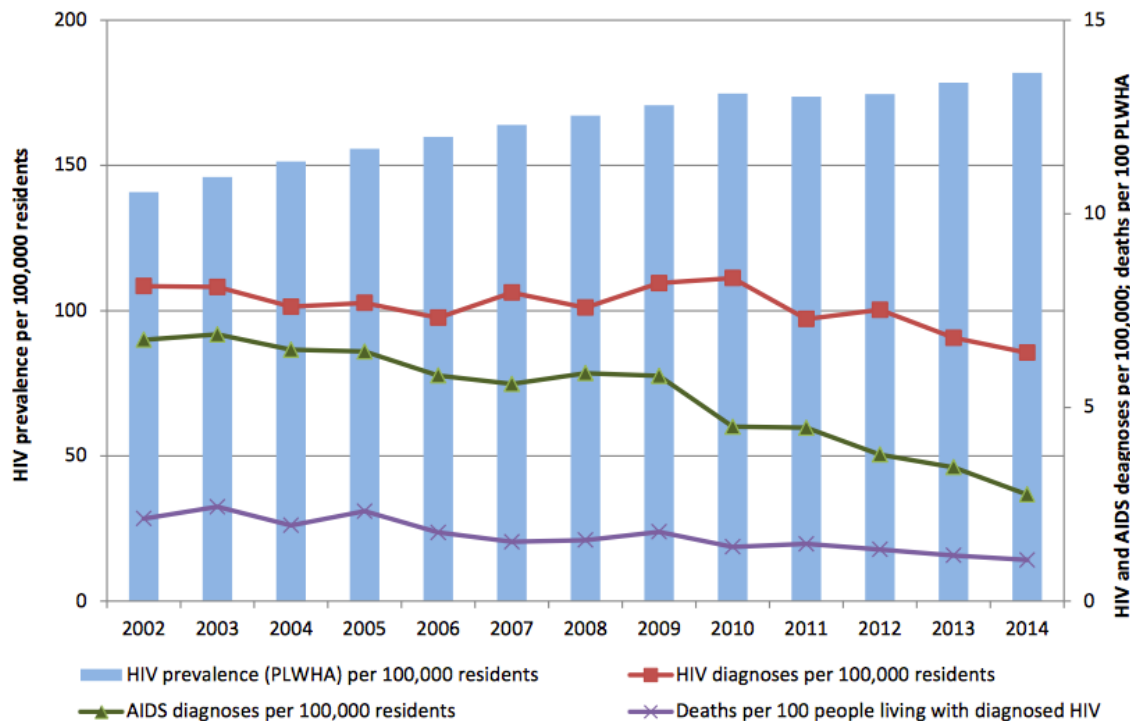


# HIV Epidemic in Washington State



# HIV Epidemic in Washington State

## HIV Prevalence, HIV diagnoses and deaths

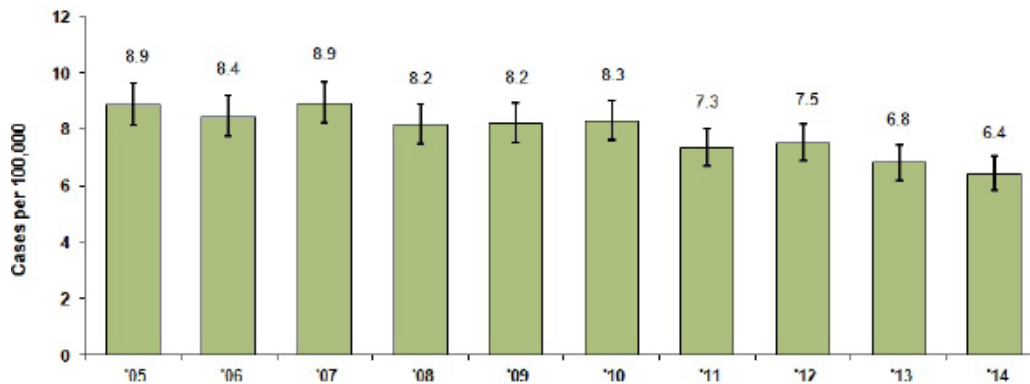




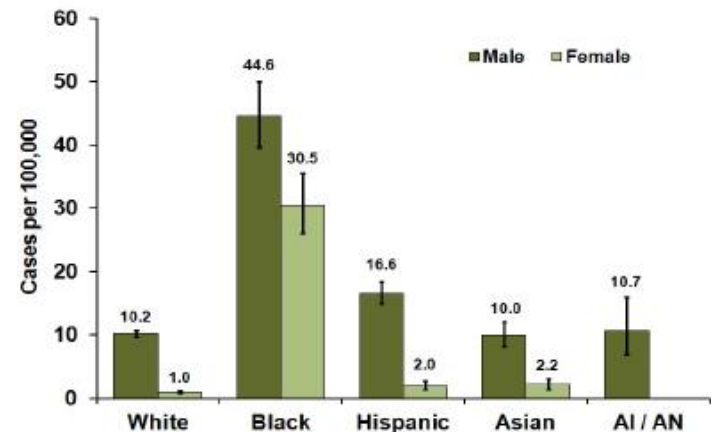
# HIV Epidemic in Washington State

## New HIV cases

Rate/100,000 by year

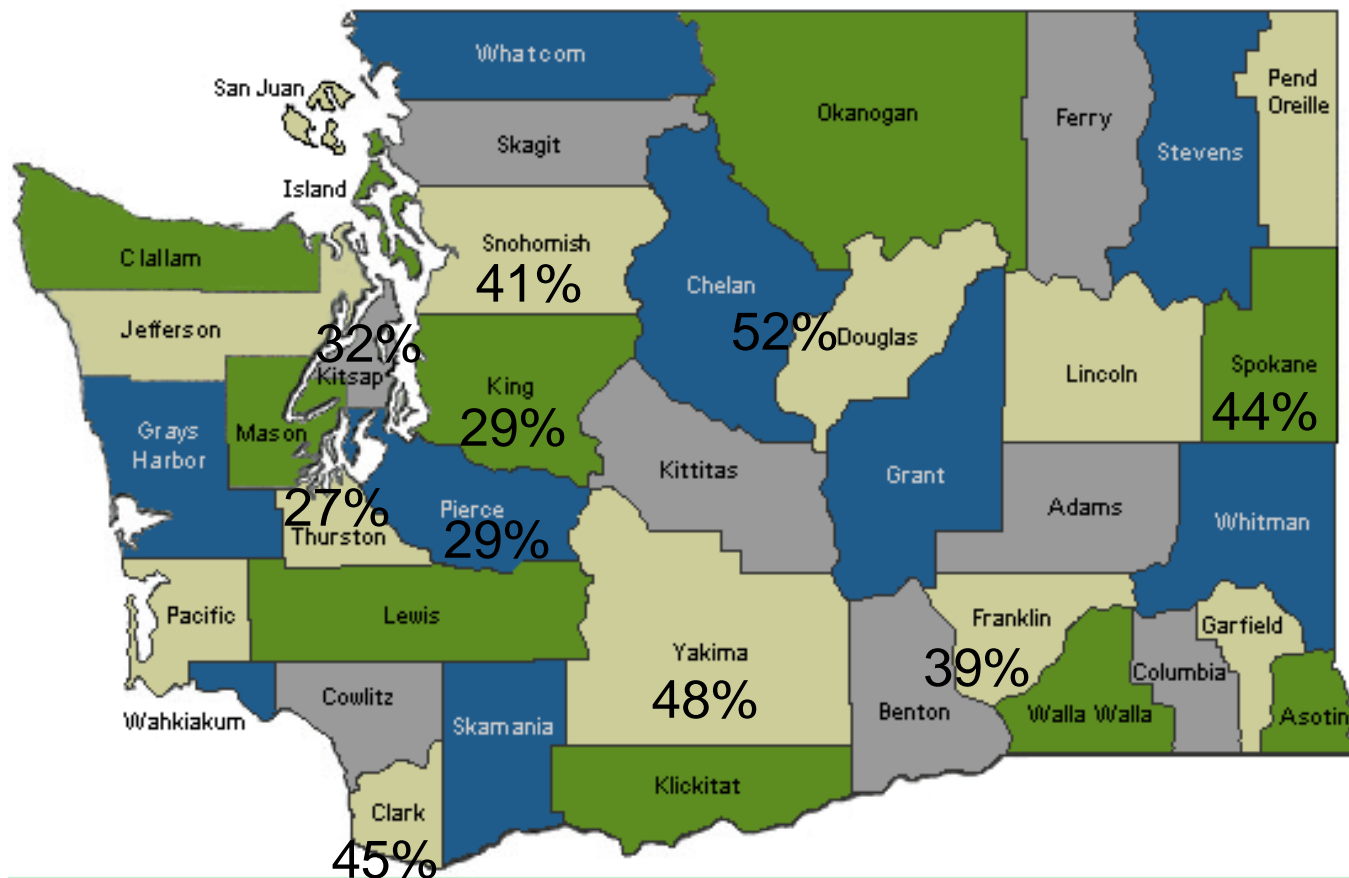


Race/ethnicity



# HIV Epidemic: Late Diagnoses

Percent New Cases Diagnosed with AIDS Within One Year of Diagnosis; 2009-13



# Obstacles to Care

- Underserved areas
- Large land mass
- Natural barriers
- Transportation issues generally

## Cascade Mountains



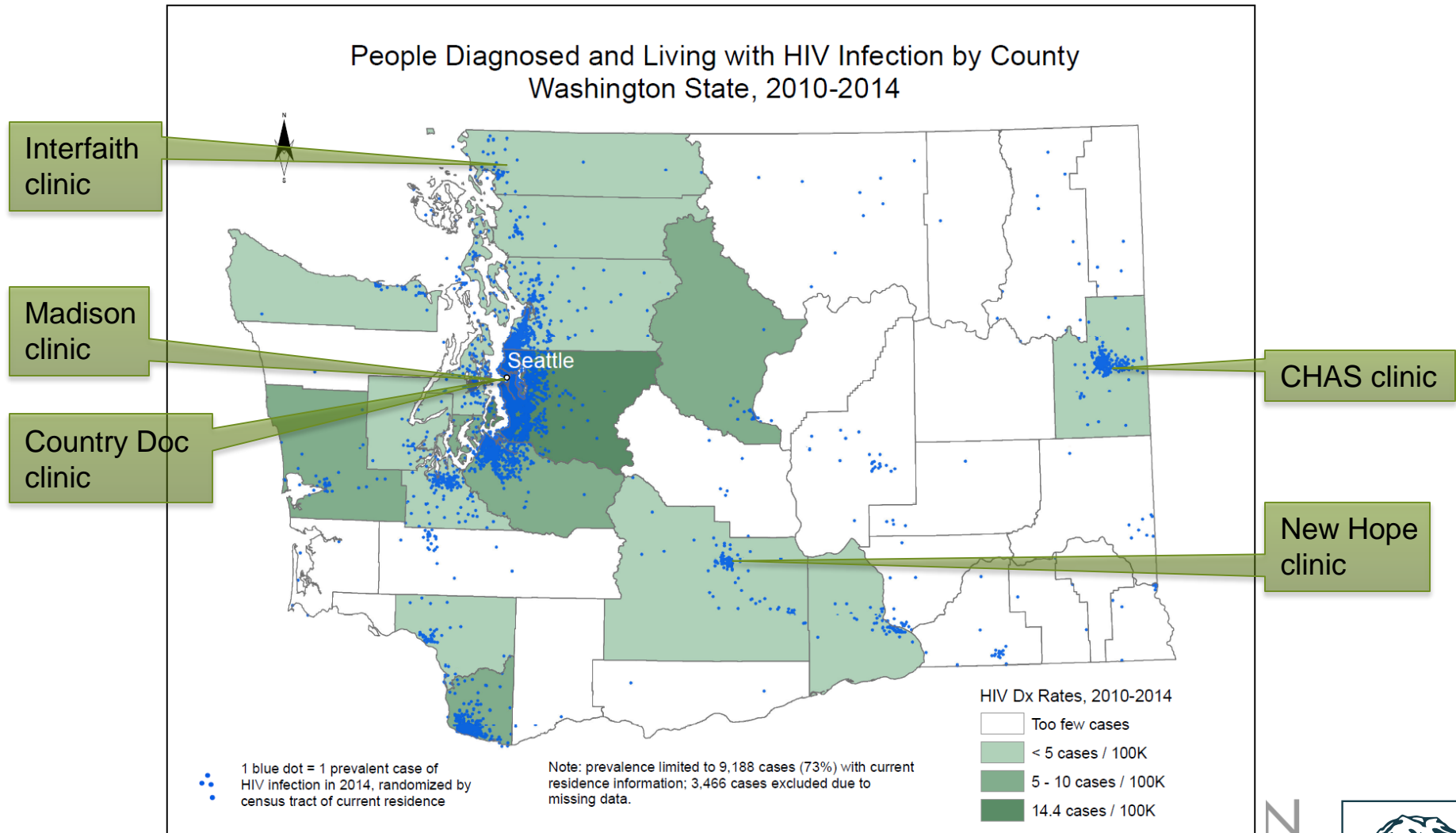
## Puget Sound



## Mountain passes



# Ryan White Supported Clinics, WA State

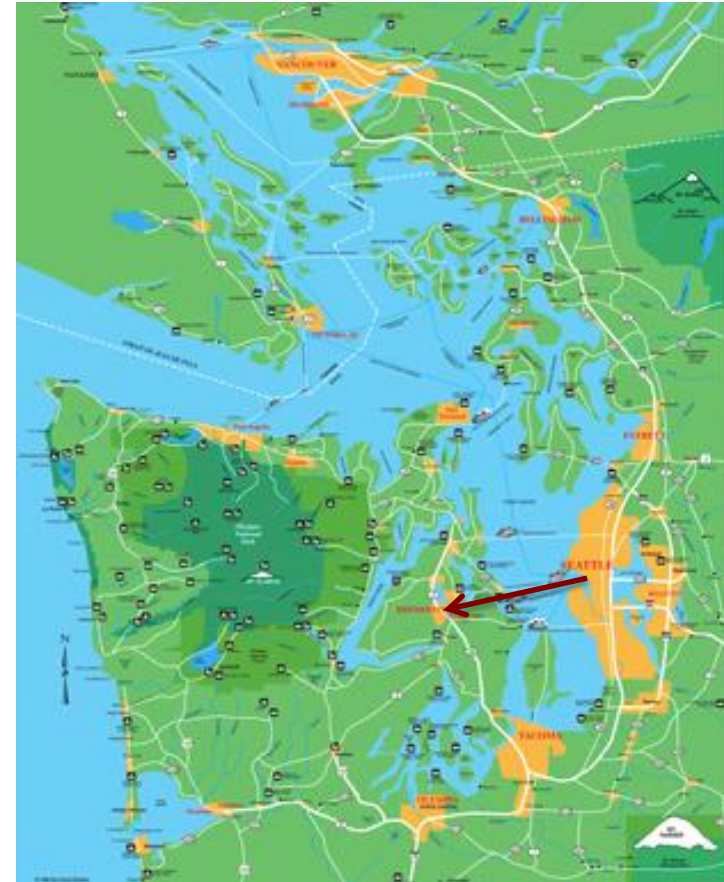




# One Solution to the Access to Care Problem: Madison Clinic Satellite Program

## Kitsap Satellite Clinic

- Initial satellite clinic, established in 2007
- Partners: Kitsap County Health Department and Washington State Department of Health
- Meets all day every Friday: First patient; 9am, last 2pm
- HMC Madison clinic provides: provider(s) (attending, residents, students), supplies, vaccines, appointing and administrative support, computers and EMR
- Kitsap Health Department provides: space, nursing, case management
- Washington State DOH provides: supplemental funding



# One Solution to the Access to Care Problem: Madison Clinic Satellite Program

## Snohomish County Satellite Clinic (since 2008)

- Partners: Community Health Centers of Snohomish County and Washington State Department of Health
- Meets Wednesdays

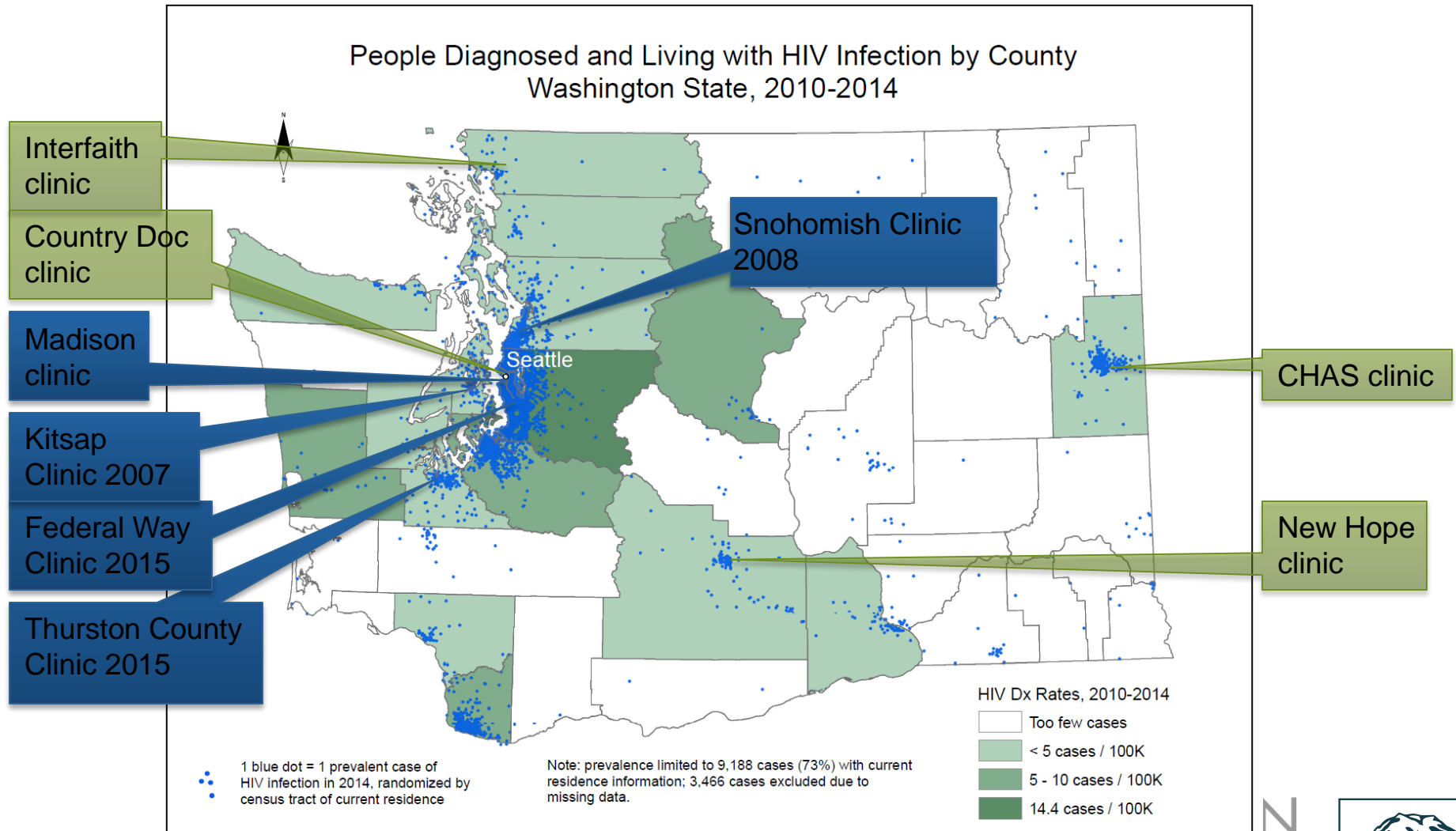
## Thurston County Satellite Clinic (2015)

- Partners: SeaMar Community Health Centers and WA DOH
- Meets Mondays

## Federal Way Clinic (2015)

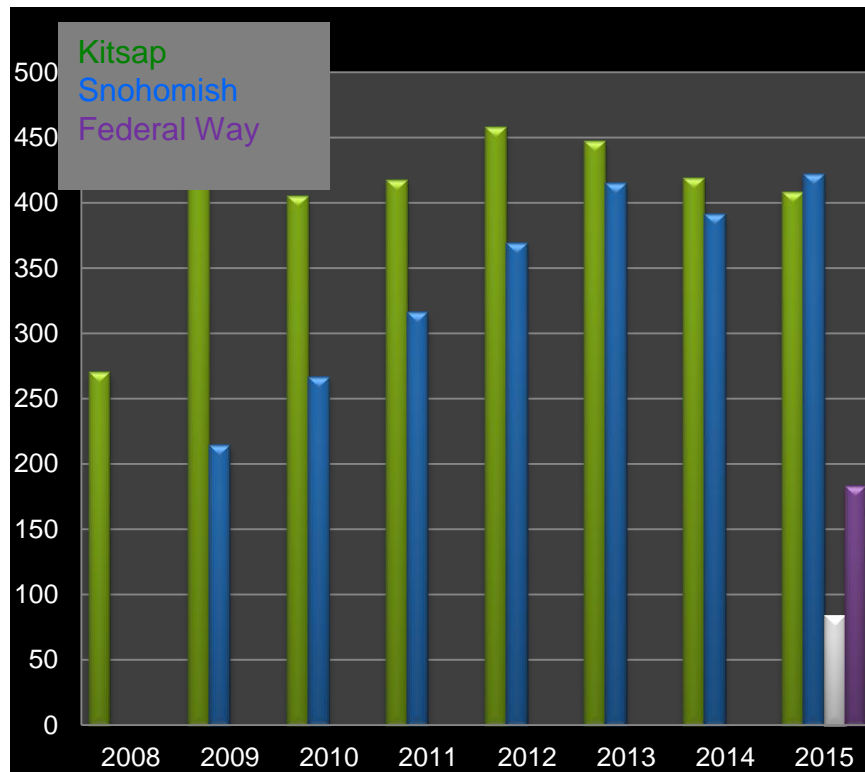
- Partners: UW Neighborhood Clinics and WA DOH
- Meets Thursdays

# Madison Clinic Satellite Program

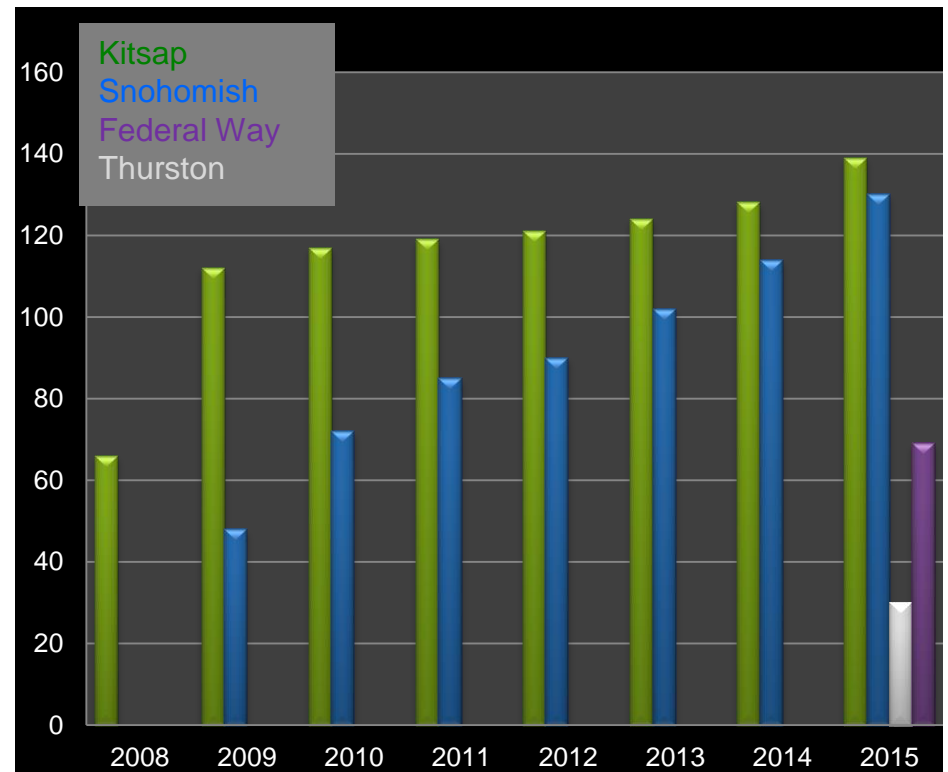


# Satellite Program Growth

## Visits per Year



## Patients per Year

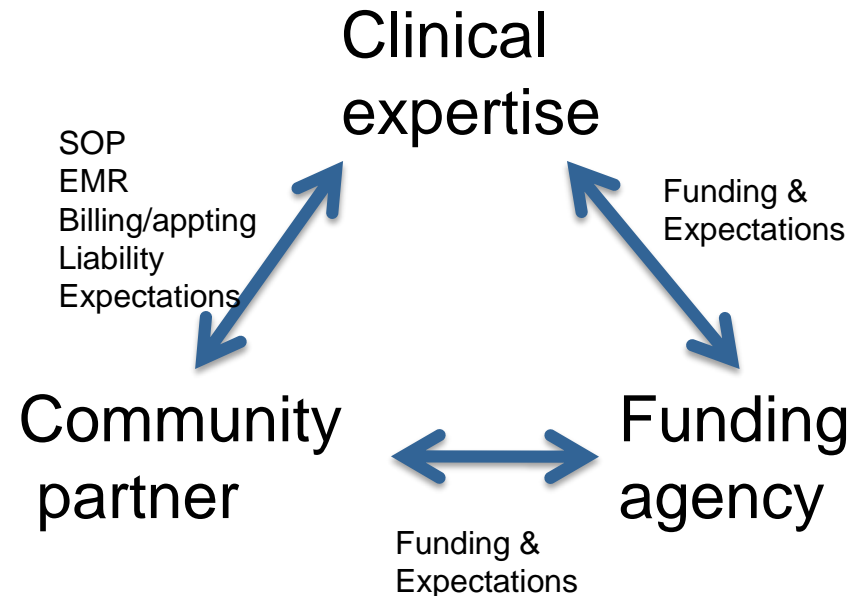




# Establishing an HIV Satellite Clinic

## First Steps

- Establish need
- Find a community partner
- Obtain supplemental funding
- Designate as “site of practice”
- Sort out liability issues
- EMR stays with the providers
- Contracts between partners



# Establishing an HIV Satellite Clinic

## Important Issues

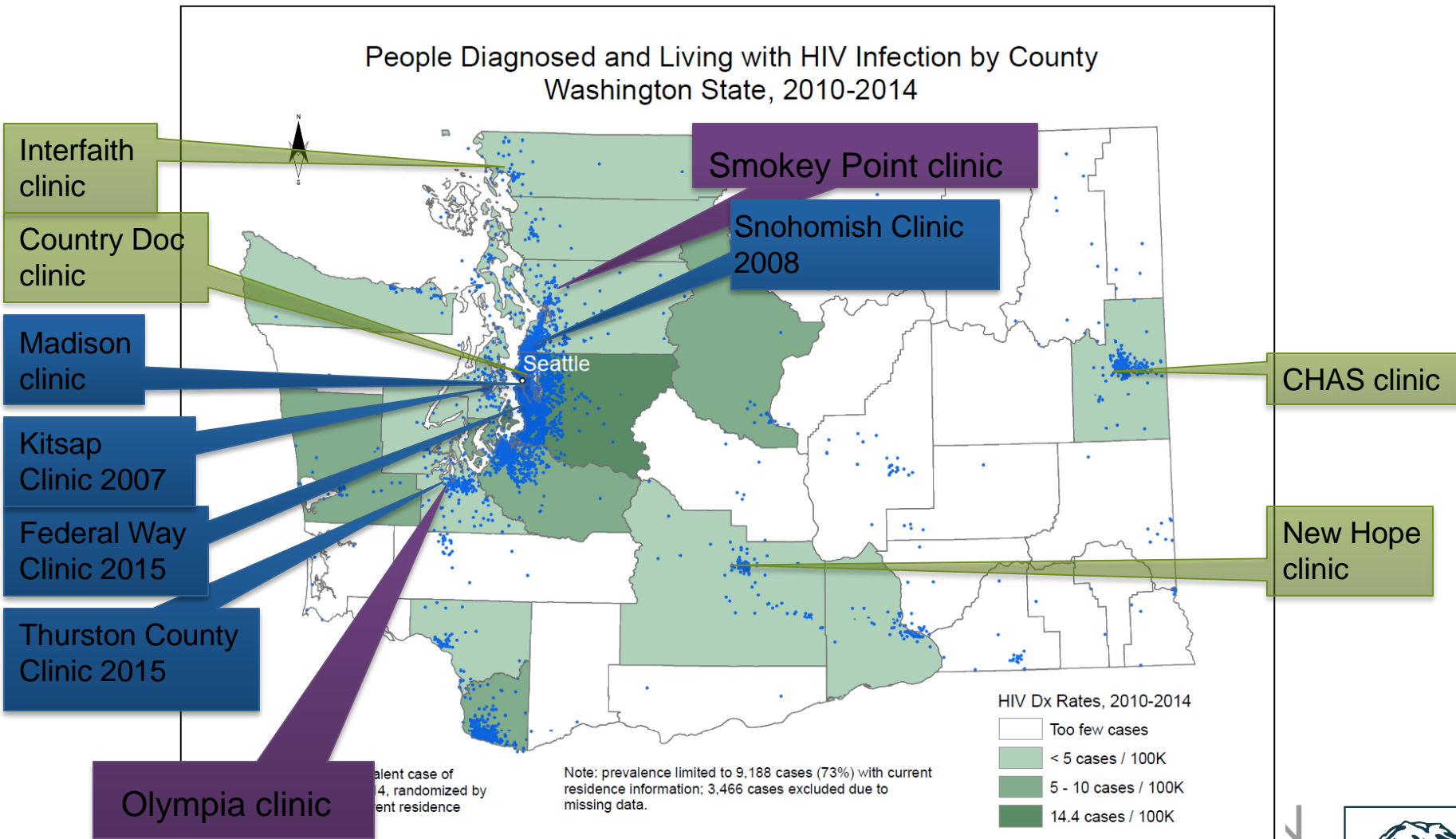
- Basic clinical space
- Good on-site support staff (RN, LPN)
- On-site case management (at least for the day of clinic operation)
- EMR stays with provider (remote connectivity)
- Establish who performs the appointing and billing
- Labs stay with the provider (provider transports specimens or courier delivers to provider institution)
- Transportation (of providers)
- Local medical community connections

# Future Plans

- Additional satellite clinics
  - > 75 miles is an issue for providers for a single day clinic.  
Potential solutions:
    - Fly
    - Drive and stay > 1 day and hold clinic less frequently
  - Medical van visiting multiple sites – might be good for regions with few patients and a lack of community partners
- Expand existing clinics by adding providers
- Psychiatry services at selected clinics

# Future Plans

People Diagnosed and Living with HIV Infection by County  
Washington State, 2010-2014



alent case of  
4, randomized by  
ent residence

Note: prevalence limited to 9,188 cases (73%) with current residence information; 3,466 cases excluded due to missing data.



Thanks for your attention

Questions?