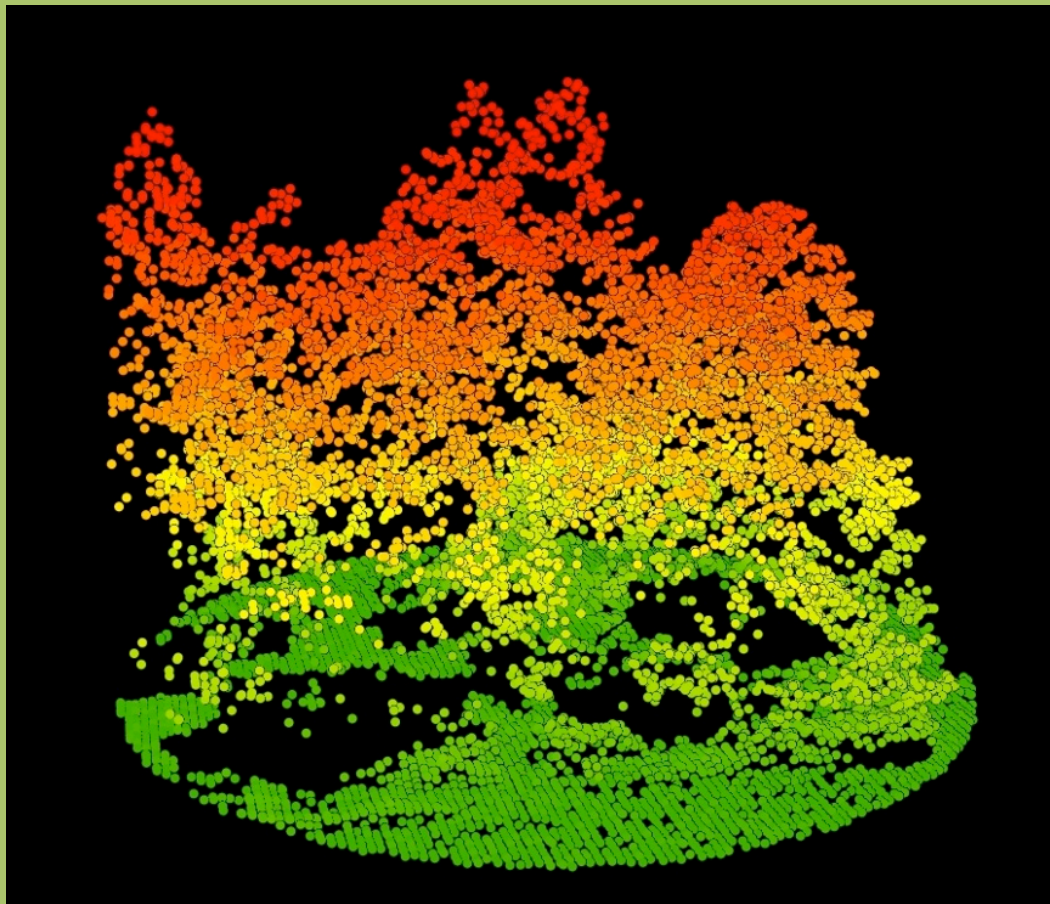
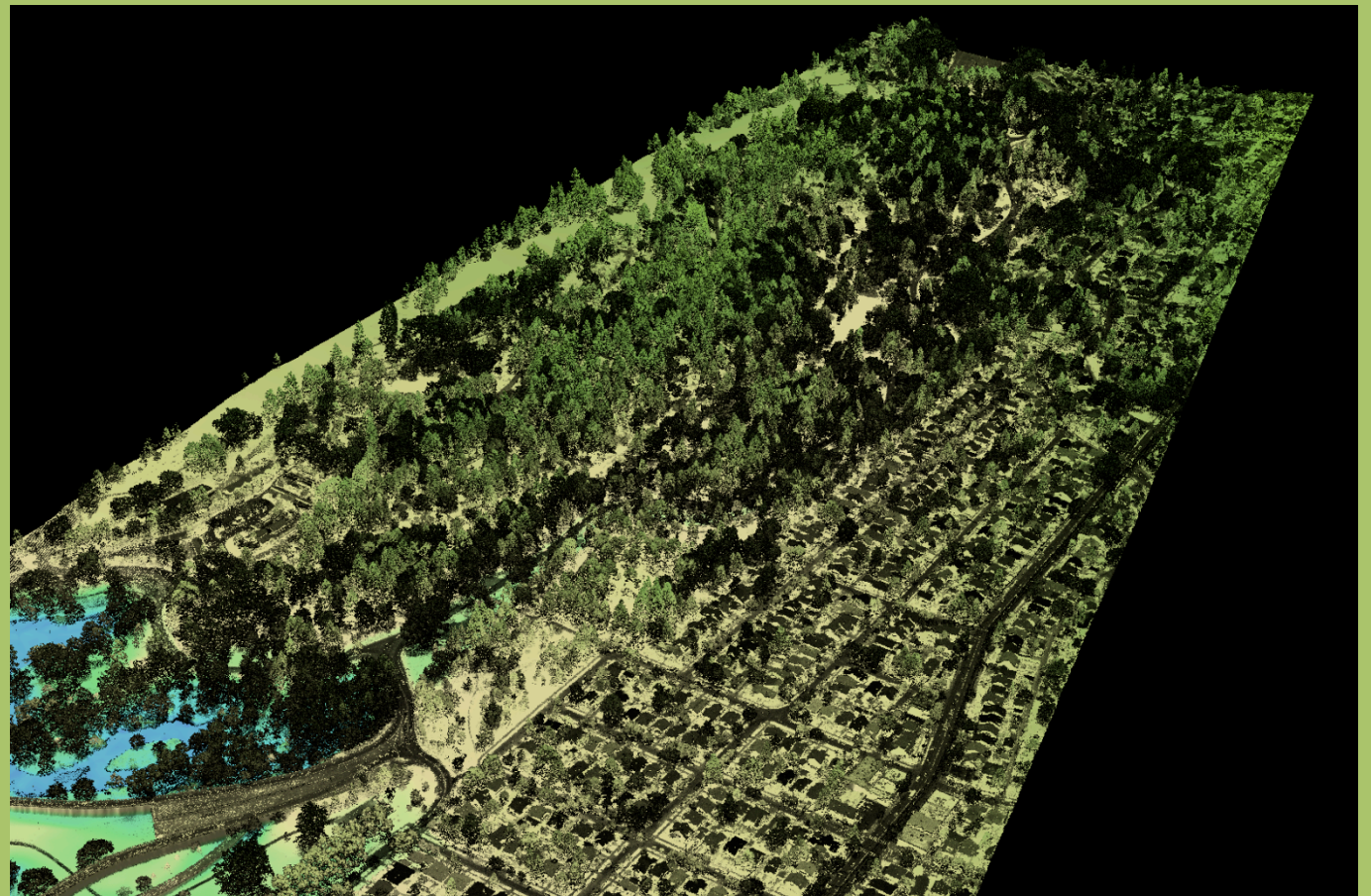


Jeff Richardson's Research

I've used aerial laser scanning (LiDAR) to derive an important vegetation parameter (Leaf Area Index) at the Washington Park Arboretum



LiDAR Point Cloud at the Arboretum



Three-dimensional visualization of the Arboretum derived from LiDAR and aerial photographs

The Leaf Area Index estimates can be used to assess important forest functions such as carbon sequestration, rainfall interception and runoff reduction, and pollution interception. LiDAR allows us to assess these functions quickly at large spatial scales

I work with Dr. John Wott, Dr. Soo-Hyung Kim, and Dr. L. Monika Moskal, and am much obliged for all their assistance. You can contact me at jeffjr@u.washington.edu