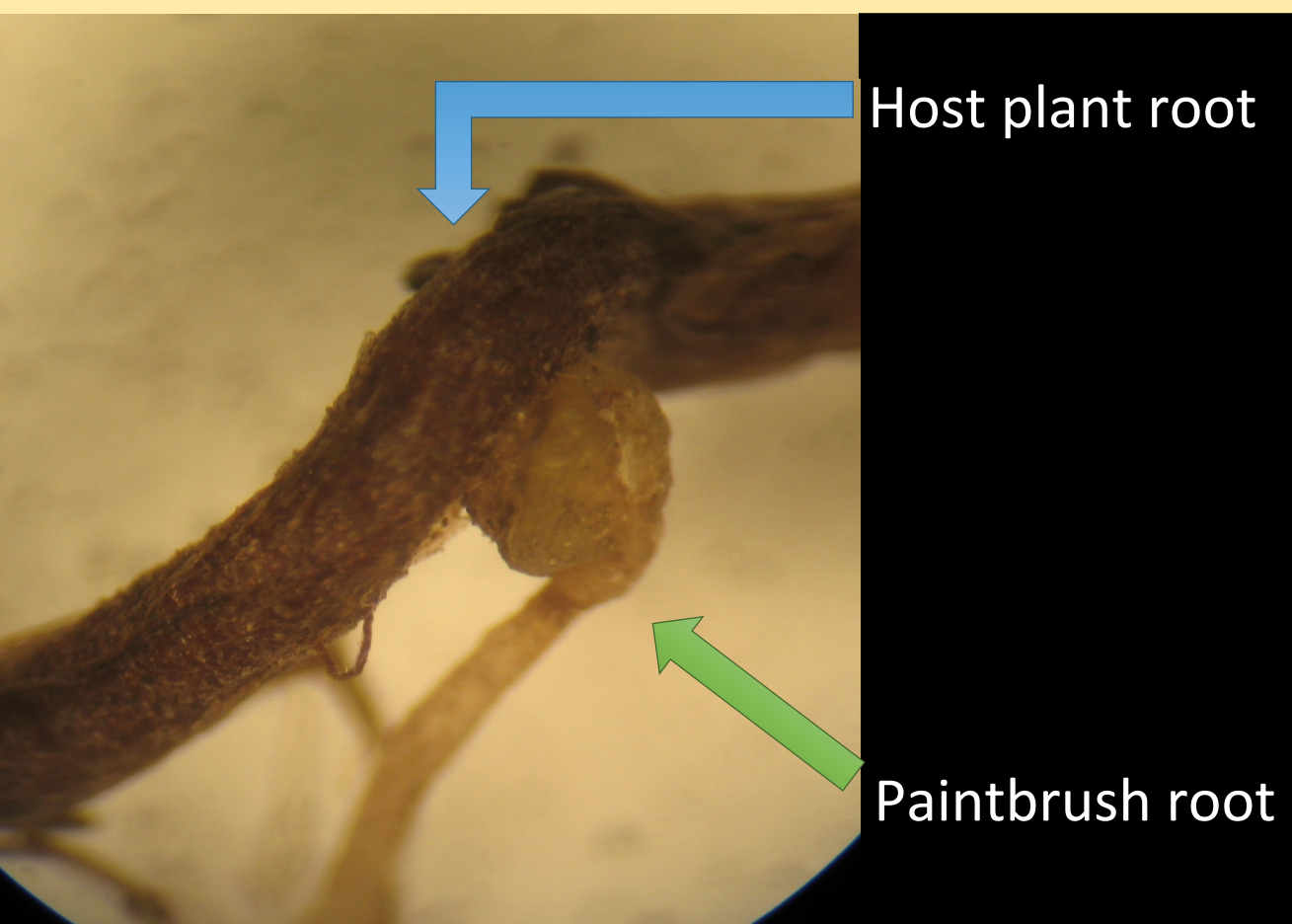


Endangered Parasites

Golden paintbrush (*Castilleja levisecta*) is an endangered plant that lives in the prairies of the Pacific Northwest. It is also a parasite.



Paintbrush uses special structures on its roots to take water and nutrients from other plants' roots. In this way, it can act as a moderator of the ecosystem by taking resources from dominant plants and redistributing them into the soil when it loses its leaves.



I am testing new "host" plants of golden paintbrush in an attempt to improve our restoration techniques for this species.

