

Health Promotion Matters

Newsletter of the UW Health Promotion Research Center

MARCH 2022

Continuing to Make an Impact Through Collaboration During the Pandemic



Our teammates at the University of Washington Health Promotion Research Center (UW HPRC) and our partners are making an impact across the country and our home-state of Washington. Our researchers and staff collaborate with community partners to promote healthy aging, particularly those with lower incomes and/or in underserved populations who are more likely to experience health disparities.

Even through a global pandemic, we have continued to successfully collaborate with a variety of organizations and community partners. We have been there to support those partners in adapting to these unprecedented times and evaluating that adaptation to see if further steps or support can take place. Learn more about our collective reach and impact through 2021 on the HPRC website.

[OUR IMPACT](#)



Best Practices for Remote Delivery of Fall Prevention Programs





We have been working with the National Council on Aging to evaluate best practices for remote delivery of evidence-based fall prevention programs because of COVID-19. During the pandemic, many organizations that were offering evidence-based fall prevention programs closed in-person classes and moved to remote delivery to meet social distancing and safety guidelines. Shifting to remote delivery of an evidence-based fall prevention program comes with a learning curve for organizations, program leaders, and participants. Thanks to our evaluation and collaboration with the National Council on Aging, there is a list of best practices to help support these organizations adapt to the learning curve.

[LEARN MORE](#)



NEW LOGO, NEW NEWSLETTER NAME

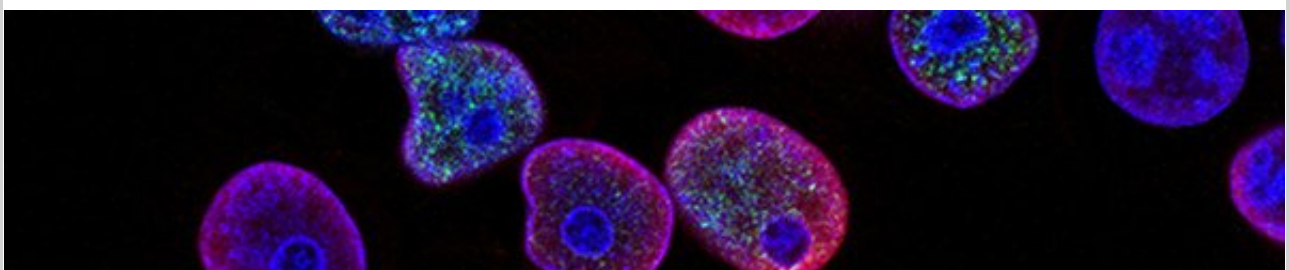
We at HPRC know how important is it for people to receive clear, concise information about health promotion research. Since our new website launched almost a year ago, we have been taking steps to simplify our visual messaging and brand for you and the rest of our audience. We have begun to rollout a new logo that better aligns with our website and the University of Washington where we are housed. If you are a community partner who needs a copy of our new logo, please let us know.

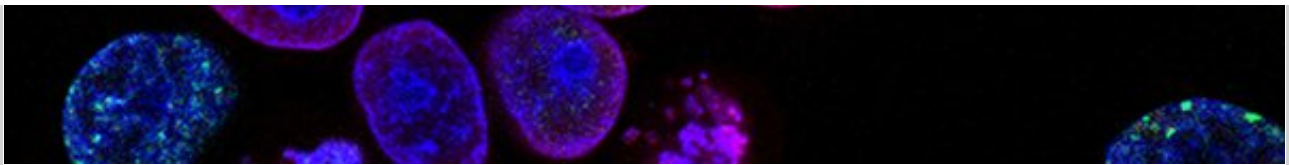


We also decided to update the name of our newsletter. As you might have noticed, it will now be called "Health Promotion Matters." We will still have all the latest news and updates from HPRC in the newsletter, regardless of its name. And as always, you can visit the HPRC website for previous editions of the newsletter or to read the HPRC blog.

Thanks so much for your continued support of HPRC, our work, and our partnerships.

In Case You Missed It: New Field Guide Available for Cancer Prevention Programs





HPRC and collaborators developed a guide to help public health and health care organizations improve colorectal cancer screening rates with their clinic partners. The Field Guide centers around supporting clinic partners in determining if they are ready to put new cancer screening evidence-based interventions into use and/or enhance existing ones. The ultimate goal is to increase colorectal cancer screening rates, which can help save lives.

While the Field Guide is designed for organizations who receive funding from the Colorectal Cancer Control Program with the U.S. Centers for Disease Control and Prevention (CDC), other cancer screening and chronic disease programs may find the Field Guide useful.

Eventually, the Field Guide and its resources will be housed on the CDC website.

[LEARN MORE](#)



Upcoming Events



April Seminar

Plein Center for Geriatric Pharmacy Research, Education and Outreach

Thursday, April 14 / 10:00 - 11:00 a.m. (PST)

Presenter: Shelly Gray, Director of Plein Center for Geriatric Pharmacy Research, Education and Outreach

Listen to audio by phone if needed: 408-638-0968

Zoom Meeting ID: 730 693 565

[JOIN ONLINE](#)



TEAM UPDATES

CONGRATS

- **Wendy Barrington** is the inaugural director of the Center for [Anti-Racism and Community Health \(ARCH\)](#) in the Department of Health Systems and Population Health within the School of Public Health. Wendy is an affiliate investigator with HPRC.

- **Bruce Bello**, a graduate research assistant with the [Partnership for Vaccine Confidence project](#), was accepted into the UW Epidemiology PhD program.
- **Miriam Flores**, a graduate research assistant with the [Partnership for Vaccine Confidence project](#), was accepted into the UW Epidemiology PhD program.
- **Amanda Parrish**, HPRC research scientist, is celebrating 10 years of service and contributions to HPRC where she has supported multiple research areas.
- **Anjali Vasavada**, a graduate research assistant with the cancer prevention and control team, was accepted into the UW Epidemiology PhD program.

WELCOME

- **Juliana Ayala-Flores** joined HPRC in December as a graduate research assistant under the direction of Linda Ko. She will support the [Re-Open Schools Safely and Educate Youth \(ROSSEY\) project](#).
- **Sonia Bishop** joined HPRC in January as a research scientist and will support multiple projects under the direction of Linda Ko.
- **Yenny Guzman** joined HPRC in December as a graduate research assistant under the direction of Linda Ko. She will support the [Re-Open Schools Safely and Educate Youth \(ROSSEY\) project](#).
- **Gauri Nayak** joined HPRC in January as a graduate research assistant with the [Decision-Making in Alzheimer's Research \(DMAR\) project](#) under the direction of Anne Turner.
- **Evalynn Romano** joined HPRC in July as a research coordinator under the direction of Barbara Baquero. She will support multiple research projects. Evalynn previously supported the Participatory Active Transportation for Health in South Seattle (PATHSS) project as a graduate research assistant.
- **Magali Sanchez** joined HPRC in November as a graduate research assistant under the direction of Barbara Baquero. She will support hypertension projects.
- **Lia Villaruz** joined HPRC in January as an undergraduate research assistant with the [Partnership for Vaccine Confidence project](#) under the direction of Barbara Baquero.

FAREWELL

- **Elsbeth Rensema** said goodbye to HPRC in December. Elspeth had been working on older adult health promotion projects under the direction of Lesley Steinman.

Recent Publications

[**Advancing Health Equity for Medicaid Beneficiaries by Adding Colorectal Cancer Screening to the Centers for Medicare and Medicaid Services Adult Core Set.**](#)

Hitchcock ME, Green BB, Anderson DS (March 2022)

[**Considerations and opportunities for multilevel HPV vaccine communication interventions.**](#) Oh A, Gaysynsky A, Winer RL, Lee HY, Brewer NT, White A (Feb 2022)

[**Effectiveness of Human Papillomavirus \(HPV\) Vaccination Against Penile HPV**](#)

[Infection in Men Who Have Sex With Men and Transgender Women.](#) Winer RL, Lin J, Querec TD, Unger ER, Stern JE, Rudd JM, Golden MR, Swanson F, Markowitz LE, Meites E (Feb 2022)

[The El Valor de Nuestra Salud clustered randomized controlled trial store-based intervention to promote fruit and vegetable purchasing and consumption.](#) Ayala GX, Pickrel JL, Baquero B, Sanchez-Flack J, Lin SF, Belch G, Rock CL, Linnan L, Gittelsohn J, Ji M, Elder JP, Mayer J (Feb 2022)

[Health plan-based mailed fecal testing for colorectal cancer screening among dual-eligible Medicaid/Medicare enrollees: Outcomes of 2 program models.](#) Baldwin LM, Coronado GD, West, II, Schwartz MR, Meenan RT, Vollmer WM, Petrik AF, Shapiro JA, Kulkarni-Sharma YR, Green BB (Feb 2022)

[Implementation of School-Based COVID-19 Testing Programs in Underserved Populations.](#) Haroz EE, Kalb LG, Newland JG, Goldman JL, Mast DK, Ko LK, Grass R, Shah P, Walsh T, Schuster JE (Feb 2022)

[Mobilizing Established School Partnerships to Reach Underserved Children During a Global Pandemic.](#) Ko LK, Tingey L, Ramirez M, Pablo E, Grass R, Larzelere F, Cisneros O, Chu HY, D'Agostino EM (Feb 2022)

[Patient Perspectives on Longitudinal Adherence to Lung Cancer Screening.](#) Holman A, Kross E, Crothers K, Cole A, Wernli K, Triplette M (Feb 2022)

[Prevalent human papillomavirus infection increases the risk of HIV acquisition in African women: advancing the argument for human papillomavirus immunization.](#) Liu G, Mugo NR, Brown ER, Mgodini NM, Chirenje ZM, Marrazzo JM, Winer RL, Mansoor L, Palanee-Phillips T, Siva SS, Naidoo L, Jeenarain N, Gaffoor Z, Nair GL, Selepe P, Nakabiito C, Mkhize B, Mirembe BG, Taljaard M, Panchia R, Baeten JM, Balkus JE, Hladik F, Celum CL, Barnabas RV (Feb 2022)

[Retrospective assessment of barriers and access to genetic services for hereditary cancer syndromes in an integrated health care delivery system.](#) Muessig KR, Zepp JM, Keast E, Shuster EE, Reyes AA, Arnold B, Ingphakorn C, Gilmore MJ, Kauffman TL, Hunter JE, Knerr S, Feigelson HS, Goddard KAB (Feb 2022)

[School-Academic Partnerships in Support of Safe Return to Schools During the COVID-19 Pandemic.](#) D'Agostino EM, Haroz EE, Linde S, Layer M, Green M, Ko LK (Feb 2022)

[MORE PUBLICATIONS](#)



A PRC Network Participant



The UW Health Promotion Research Center is a [CDC Prevention Research Centers network member](#), building healthier communities together for more than 30 years.

PREVIOUS HPRC NEWSLETTERS

[Department of Health Systems & Population Health / School of Public Health](#)

[CONTACT US](#) | [PRIVACY](#) | [TERMS](#)

© 2021 University of Washington Health Promotion Research Center

Hans Rosling Center for Population Health / 3980 15th Avenue NE, 4th Floor / UW Mailbox 351621 / Seattle, WA 98195

This email was sent to
[Unsubscribe or change your email preferences](#)