

# Challenges of Moving Freight in an Urban Environment

John Creighton  
Seattle Port Commissioner



Port of Seattle

Where a sustainable world is headed.™



Port of Seattle

# Port of Seattle – Organizational Structure

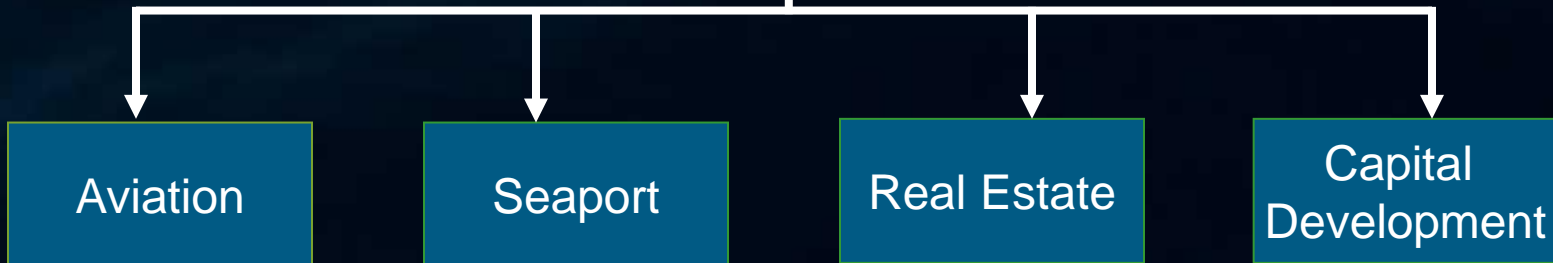


King County Voters



Commissioners

CEO





Pier 90/91



Pier 86



Pier 66



Terminal 46

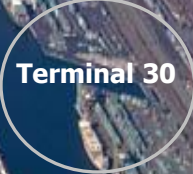
T-18 On-Dock Rail



T-5 On-Dock Rail



Terminal 18



Terminal 30

Terminal 5

BNSF (SIG - North)



BNSF (SIG - South)



UPRR (ARGO)





**COLOR KEY**

Container Terminals	Cruise Facilities	Industrial & Commercial Properties
General Purpose Marine/Cargo Terminals	Fishing/Workboat, Commercial & Recreational Moorage	

**LEGEND OF MAP SYMBOLS**

Interstate	Recreational Moorage	Freeway
State Highway	Public Shoreline Access & Parks	Primary Road
		Secondary Road
		Railroad



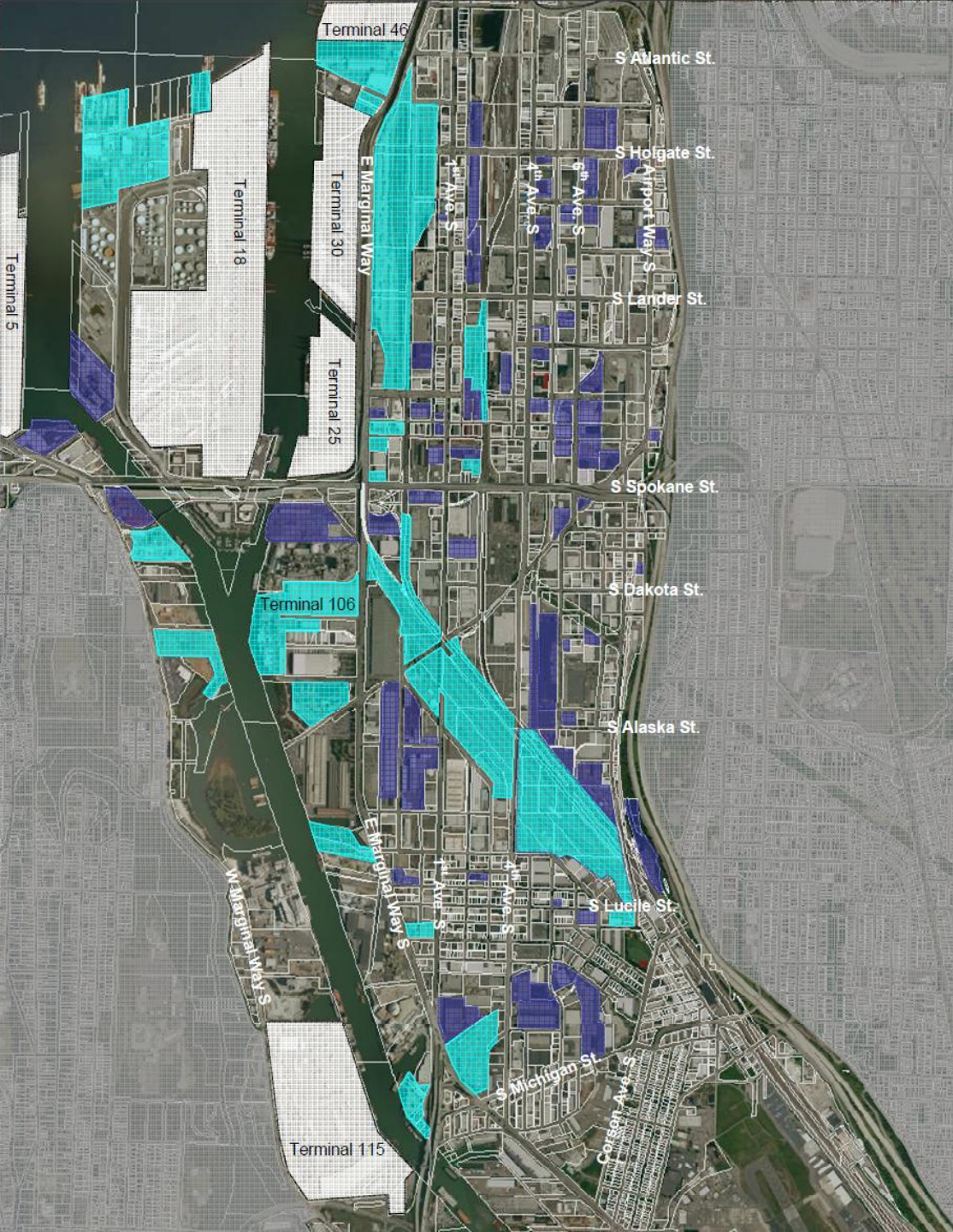
# Manufacturing Industrial Center

Inventory of Businesses Linked to the Port of Seattle in the Duwamish Manufacturing / Industrial Center

WORKING DRAFT July 26, 2010

-  Businesses Engaged in Importing or Exporting
-  Services to Operation of the Port
-  Port of Seattle Cargo Terminals

Disclaimer: The information shown on this map is for planning purposes only. The Port of Seattle makes no warranties, fact or implied, as to the accuracy of this information.



# New Truck Ramp for Better T-46 Access



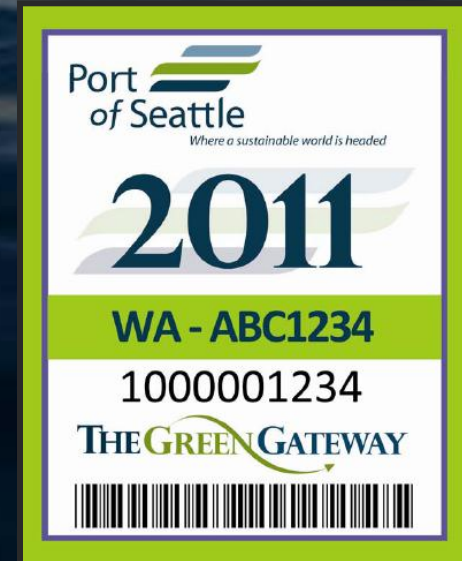
Terminal 46

**Proposed Conceptual Design**

# Clean Truck Program

Our program was developed collaboratively with business stakeholders and successfully rolled out on January 1, 2011

- Model year 1994 or newer engines
- Terminal Operators administer
- Drayage Truck Registry
- 2007 or newer trucks by 2015



## ScRAPs

- \$5,000 incentive to remove pre-1994 trucks
- 280 trucks scrapped and recycled
- Program sunset on 1/31/11







# Challenges of Moving Freight in an Urban Environment

Seattle Port Commissioner John Creighton



Port of Seattle

Where a sustainable world is headed.™