

### Data Selection Panel

Name of Image Matrix

Name of Variable Matrix

This tutorial contains navigation buttons that enable you to move throughout the tutorial.

Please use the navigation buttons and not the page up/page down or arrow keys to navigate through the tutorials.

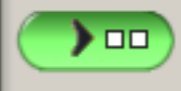
This is the 'Next' button. It takes you to the next frame or stop point.



This is the 'Previous' button. It takes you to the previous frame or stop point.




This is the 'Go to frame' button. It takes you to a specified frame.



This is the 'Go to URL' button. It takes you to a website link.



Press the 'Next' button below to start this tutorial.



### Data Selection Panel

Name of Image Matrix

imagedata\_PEG...

Name of Variable Matrix

exactmass\_PEGP...

This tutorial will cover how to use a new panel that allows the user to create a pseudo spectrum of any imported or generated data. I call this a "pseudo spectrum" because it will only contain the peaks contained within the imported data set. Since the Imagegui does not import raw data directly, the displayed spectrum will not be a full mass spectrum. It will however accurately show differences between the peaks within a data set.

Right now the functionality of this panel is limited, but I plan on adding additional features as necessary.

This tutorial assumes that you have already loaded some data (see tutorial 02).



### Data Selection Panel

Name of Image Matrix

imagedata\_PEG...

Name of Variable Matrix

exactmass\_PEGP...

Make sure you select the data you want to plot from the drop down menus on the left.



Name of Image Matrix  
imagedata\_PEG...

- Plot Image Data
- Plot image peak ratio
- Image Overlay
- PCA
- MAF
- PC Data Browser
- Scalebar Tools
- Image Properties
- Plot Psuedo Spectrum**

Data Selection Panel  
Matrix

Then select 'Plot Pseudo Spectrum' from the 'Data Display' menu.

← →

### Data Selection Panel

Name of Image Matrix

Name of Variable Matrix

imagedata\_PEG...

exactmass\_PEGP...

Load Selected Data

Image:

None

Variables

None

Then press the "Load Selected Data" button.

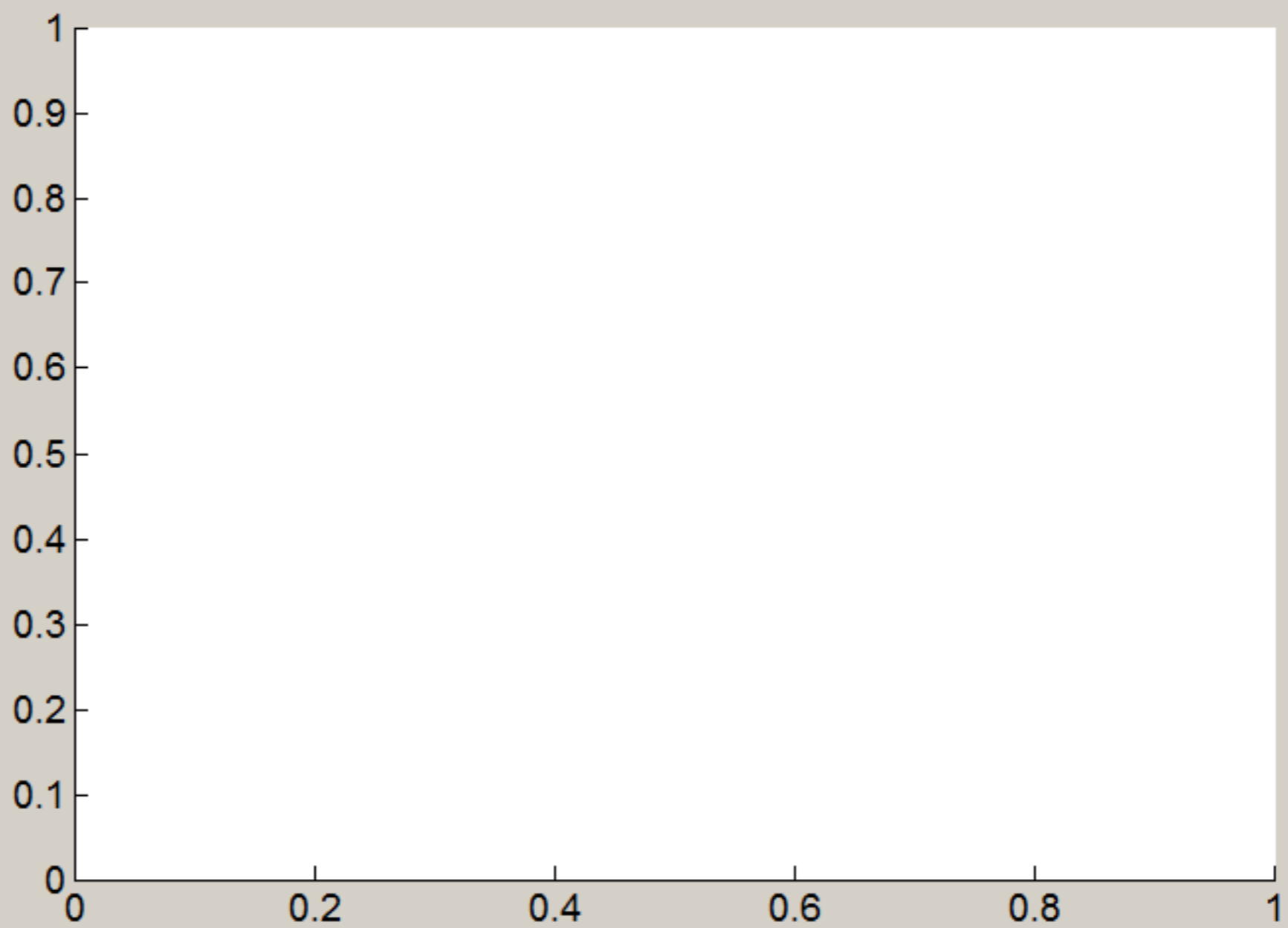


Plot "Spectrum"

Ext Figure

Save Figure

Close



### Data Selection Panel

Name of Image Matrix

Name of Variable Matrix

imagedata\_PEG...

exactmass\_PEGP...

Load Selected Data

Image: **imagedata\_PEGPS\_07**

Variables **exactmass\_PEGPS\_07**

Zoom In

Zoom Reset

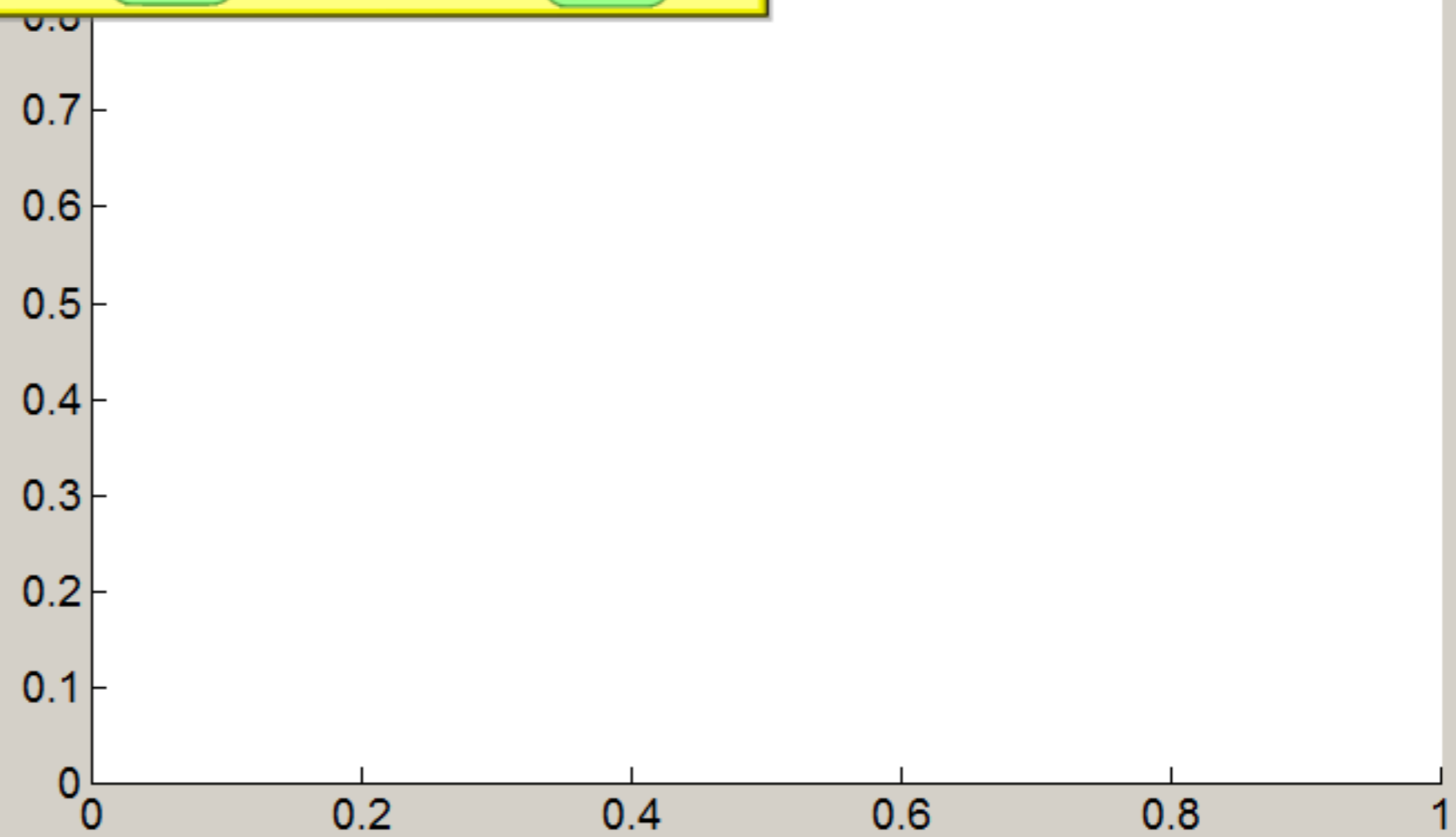
Plot "Spectrum"

Ext Figure

Save Figure

Close

Press the 'Plot "Spectrum"' button to display the spectrum.



### Data Selection Panel

Name of Image Matrix

Name of Variable Matrix

imagedata\_PEG...

exactmass\_PEGP...

Load Selected Data

Image: **imagedata\_PEGPS\_07**

Var

You can zoom into a given region by pressing the 'Zoom In' button...

Zoom In

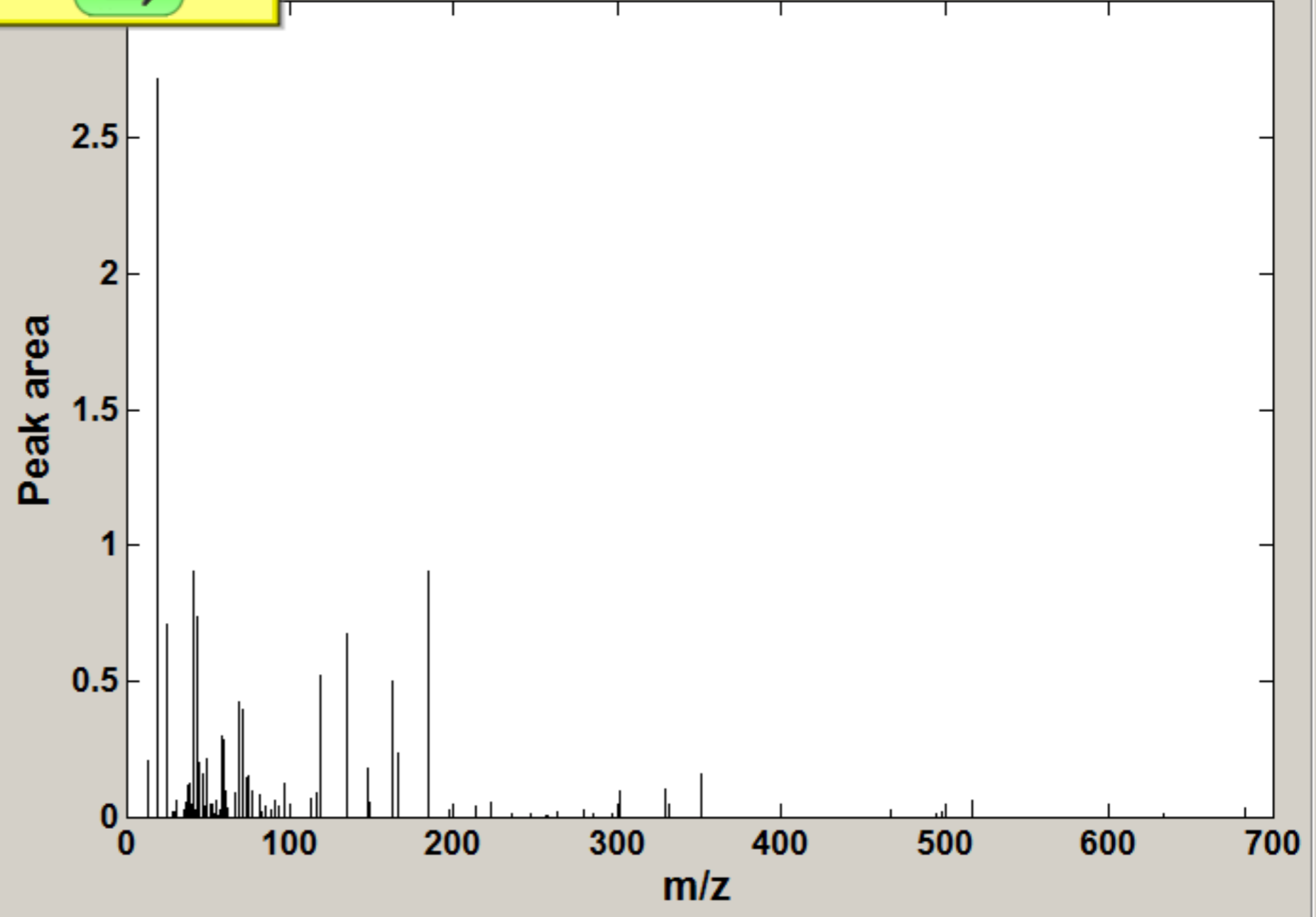
Zoom Reset



Ext Figure

Save Figure

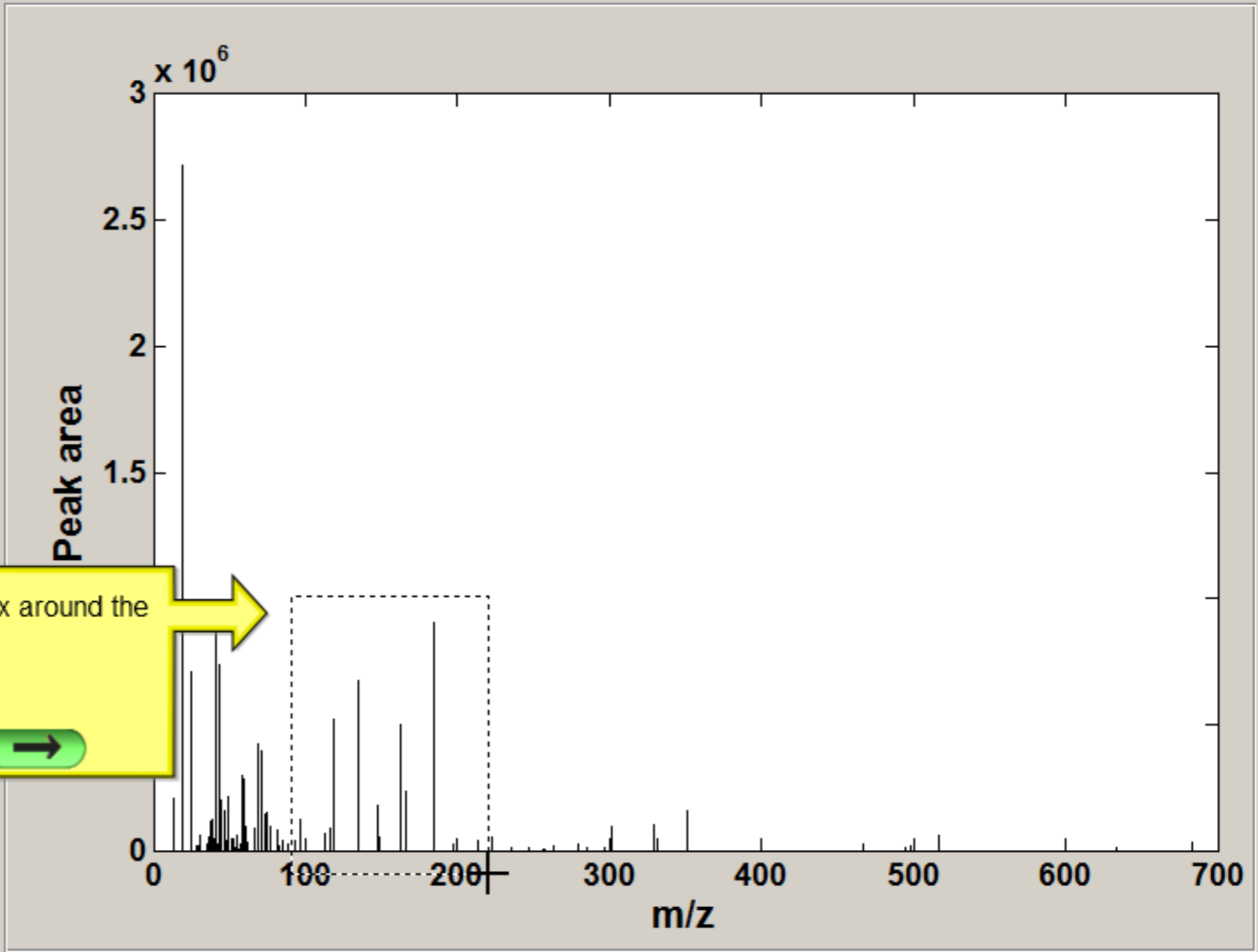
Close



### Data Selection Panel

Name of Image Matrix:  Name of Variable Matrix:

Image: **imagedata\_PEGPS\_07**  
Variables: **exactmass\_PEGPS\_07**



and left clicking and dragging a box around the region you want to zoom into.





### Data Selection Panel

Name of Image Matrix

Name of Variable Matrix

imagedata\_PEG...

exactmass\_PEGP...

Load Selected Data

Image: **imagedata\_PEGPS\_07**

Variables **exactmass\_PEGP...**

To zoom back to the full spectrum view press the 'Zoom Reset' button.

Zoom Reset

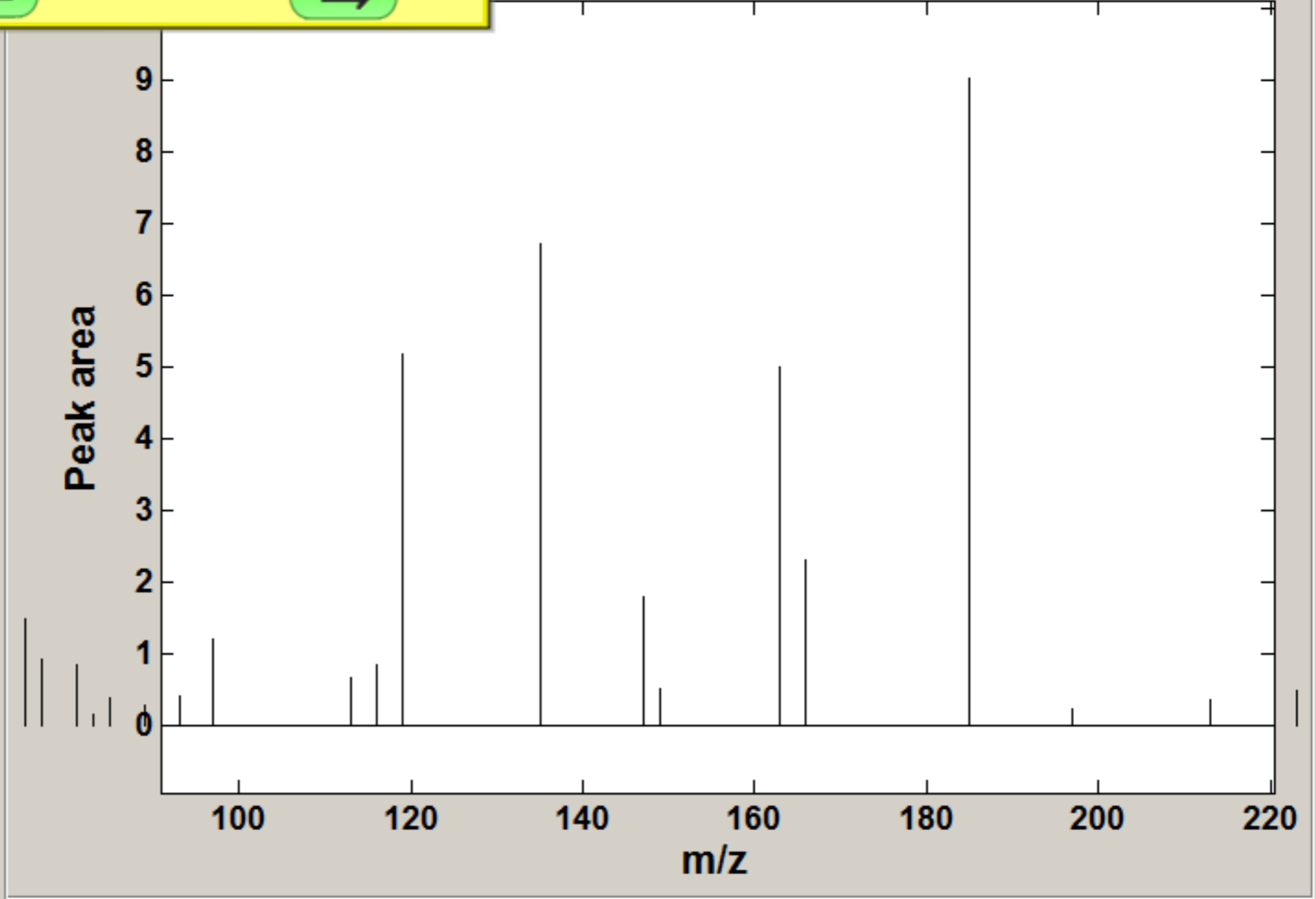
Plot "Spect



Ext Figure

Save Figure

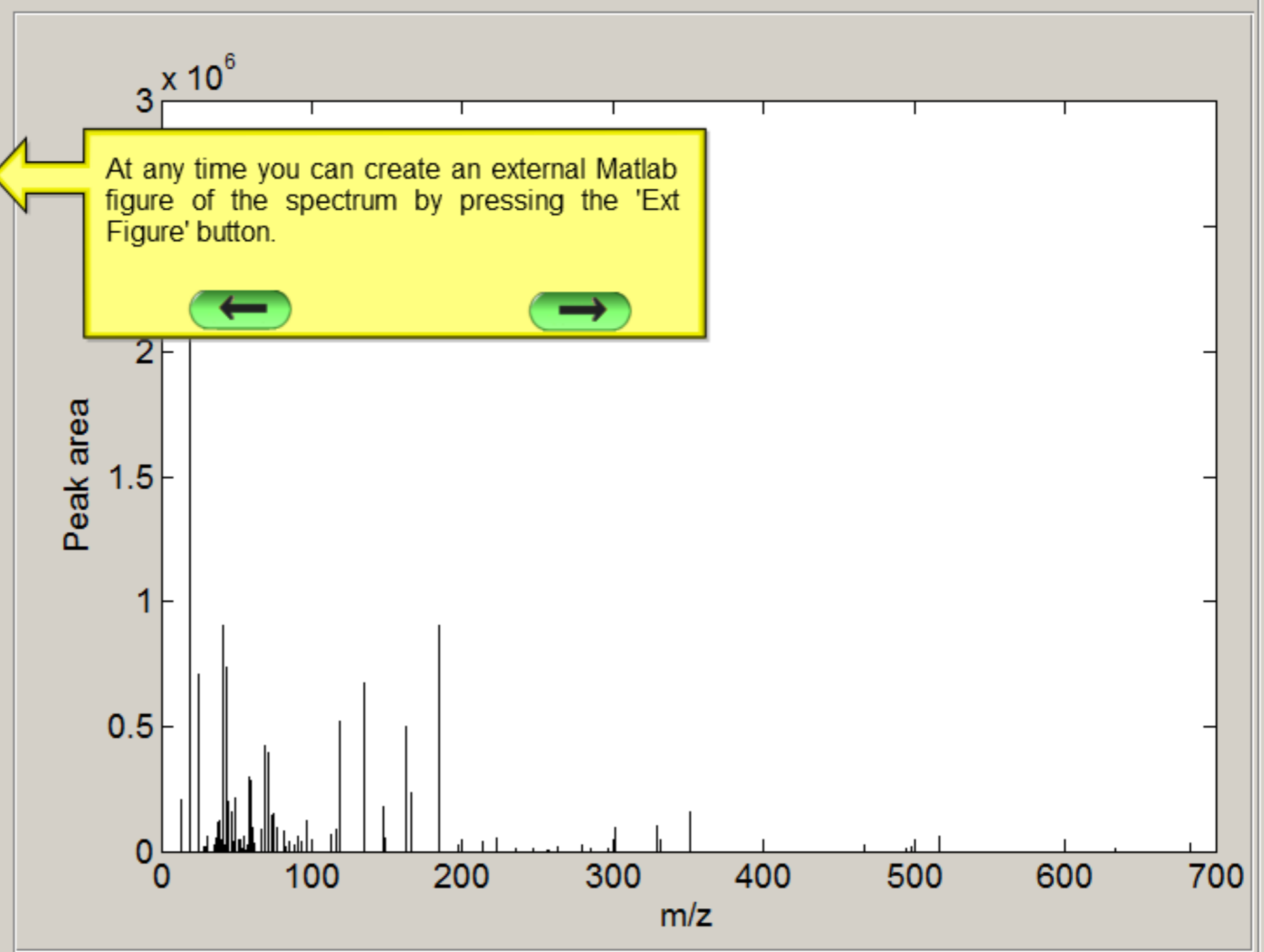
Close



### Data Selection Panel

Name of Image Matrix:  Name of Variable Matrix:

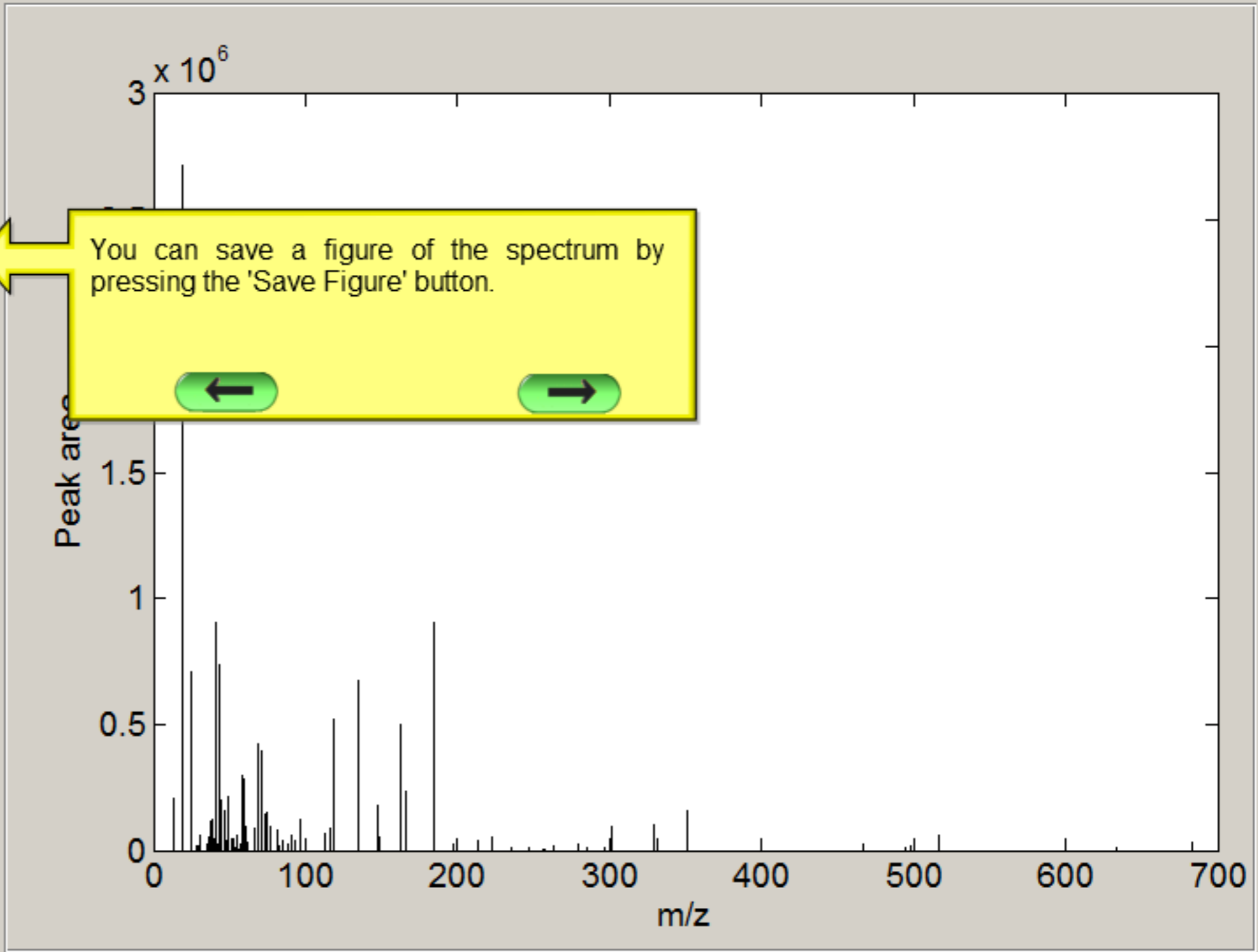
Image: **imagedata\_PEGPS\_07**  
Variables: **exactmass\_PEGPS\_07**



### Data Selection Panel

Name of Image Matrix:   
Name of Variable Matrix:

Image: **imagedata\_PEGPS\_07**  
Variables: **exactmass\_PEGPS\_07**



You can save a figure of the spectrum by pressing the 'Save Figure' button.



### Data Selection Panel

Name of Image Matrix

Name of Variable Matrix

imagedata\_PEG...

exactmass\_PEGP...

Load Selected Data

Image: **imagedata\_PEGPS\_07**

Variables **exactmass\_PEGPS\_07**

Zoom In

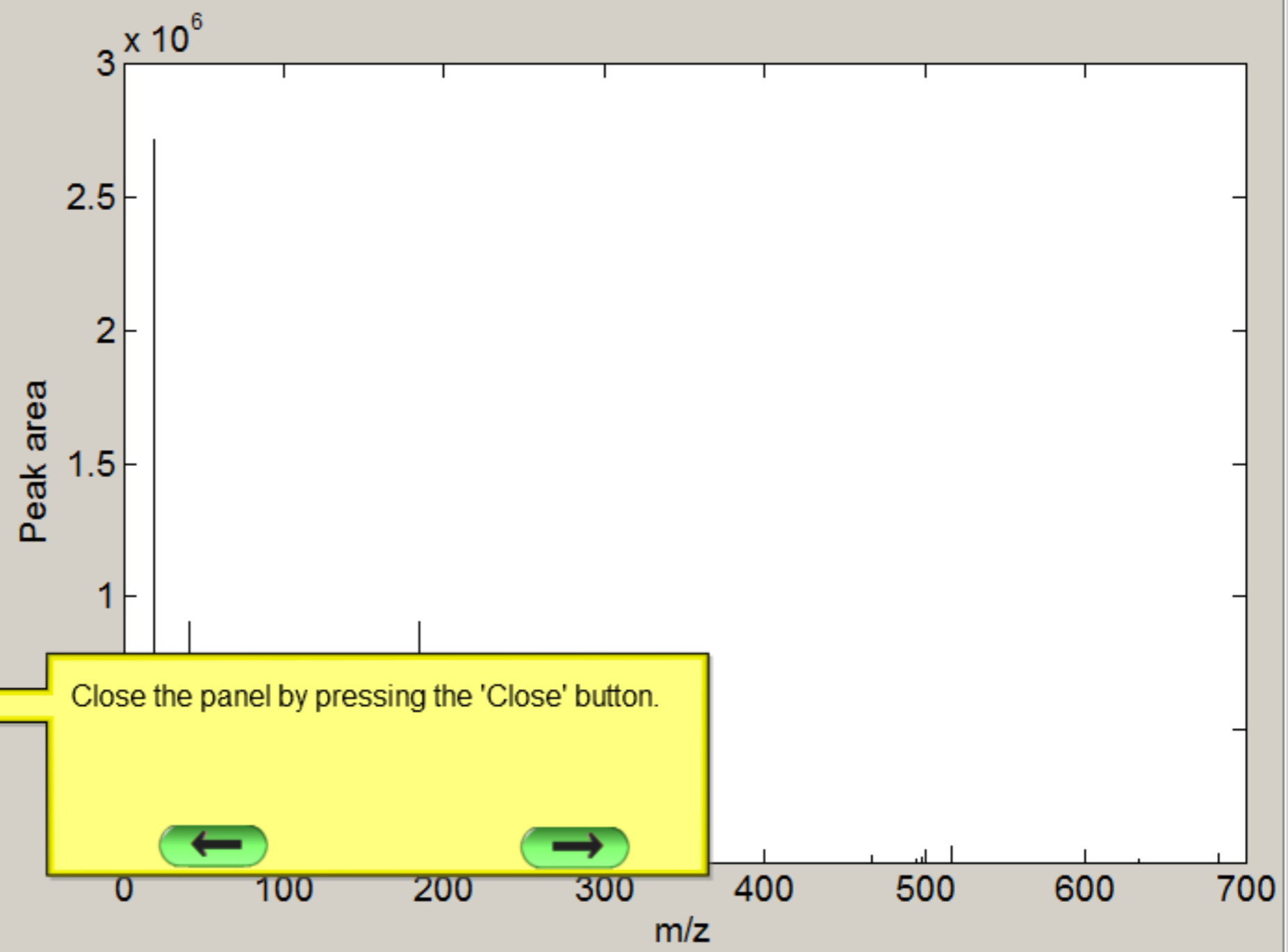
Zoom Reset

Plot "Spectrum"

Ext Figure

Save Figure

Close



Close the panel by pressing the 'Close' button.



### Data Selection Panel

Name of Image Matrix

Name of Variable Matrix

imagedata\_PEG...

exactmass\_PEGP...

That's it for this tutorial.

Press the green button on the left to go back to the previous step. Press the button the right to go back to the beginning of the tutorial.

