

Data Selection Panel

These are the main input data that will be used in further analysis unless you specify otherwise.
Use the drop down menus to select the data and information you want to use in your analysis.

Name of Data Matrix

Select Data

Name of Variable Matrix

Select Variables

Name of Filename Matrix

Select Filenames

Name of Totalcounts Matrix

Select Totalcounts

Name of Samplenames Matrix

Select Samples

This tutorial contains navigation buttons that enable you to move throughout the tutorial.

Please use the navigation buttons and not the page up/page down or arrow keys to navigate through the tutorials.

This is the 'Next' button. It takes you to the next frame or stop point.



This is the 'Previous' button. It takes you to the previous frame or stop point.



This is the 'Go to frame' button. It takes you to a specified frame.

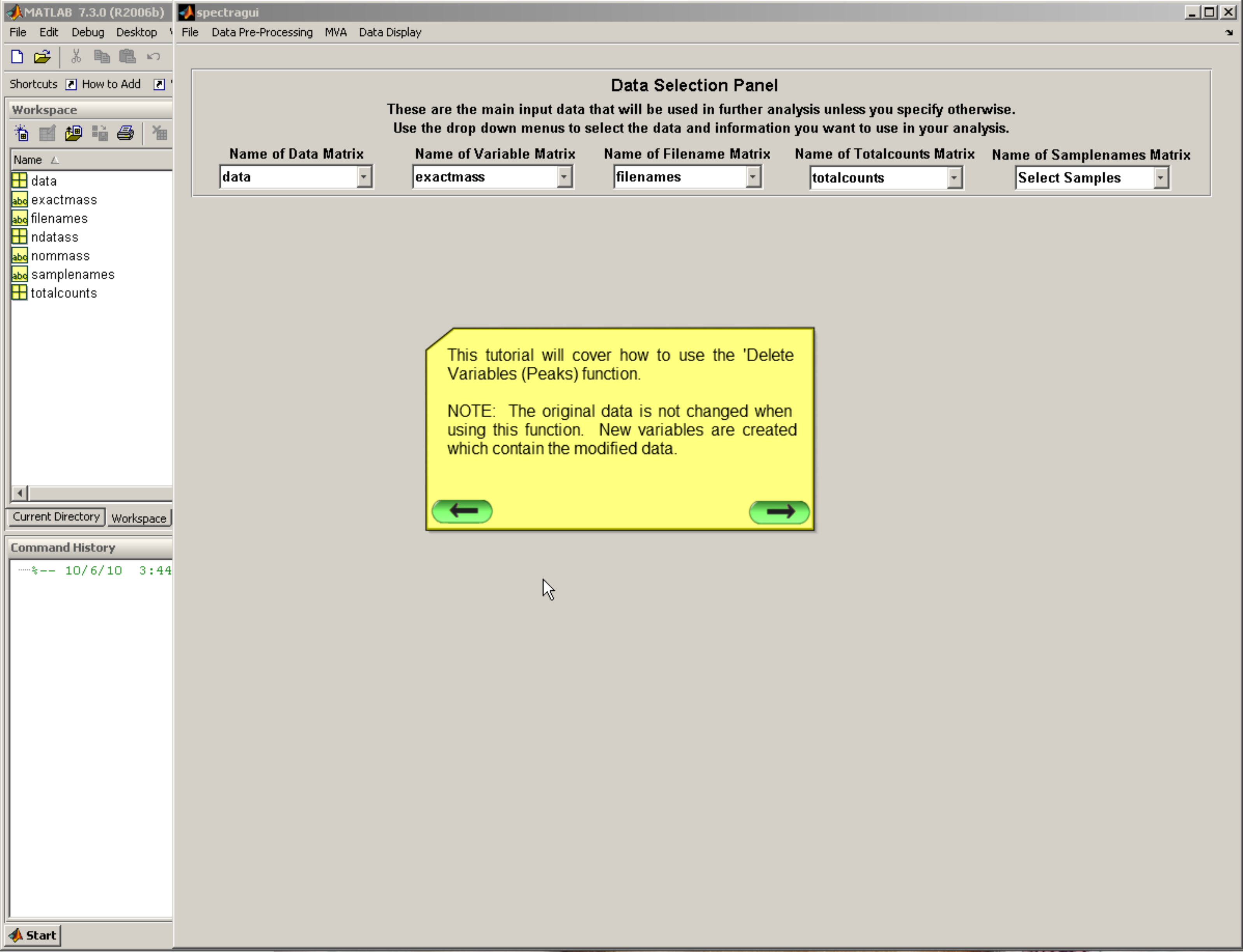


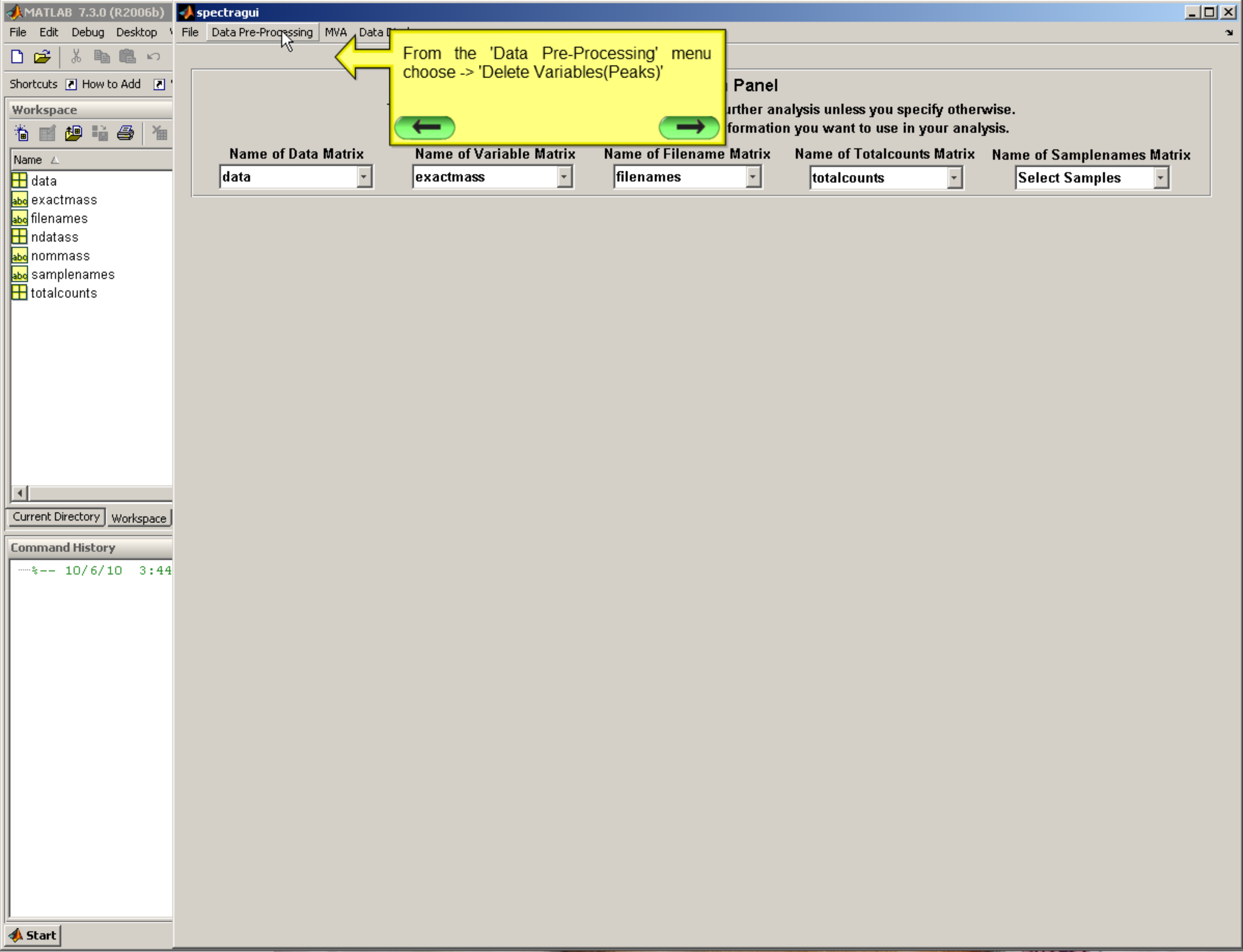
This is the 'Go to URL' button. It takes you to a website link.

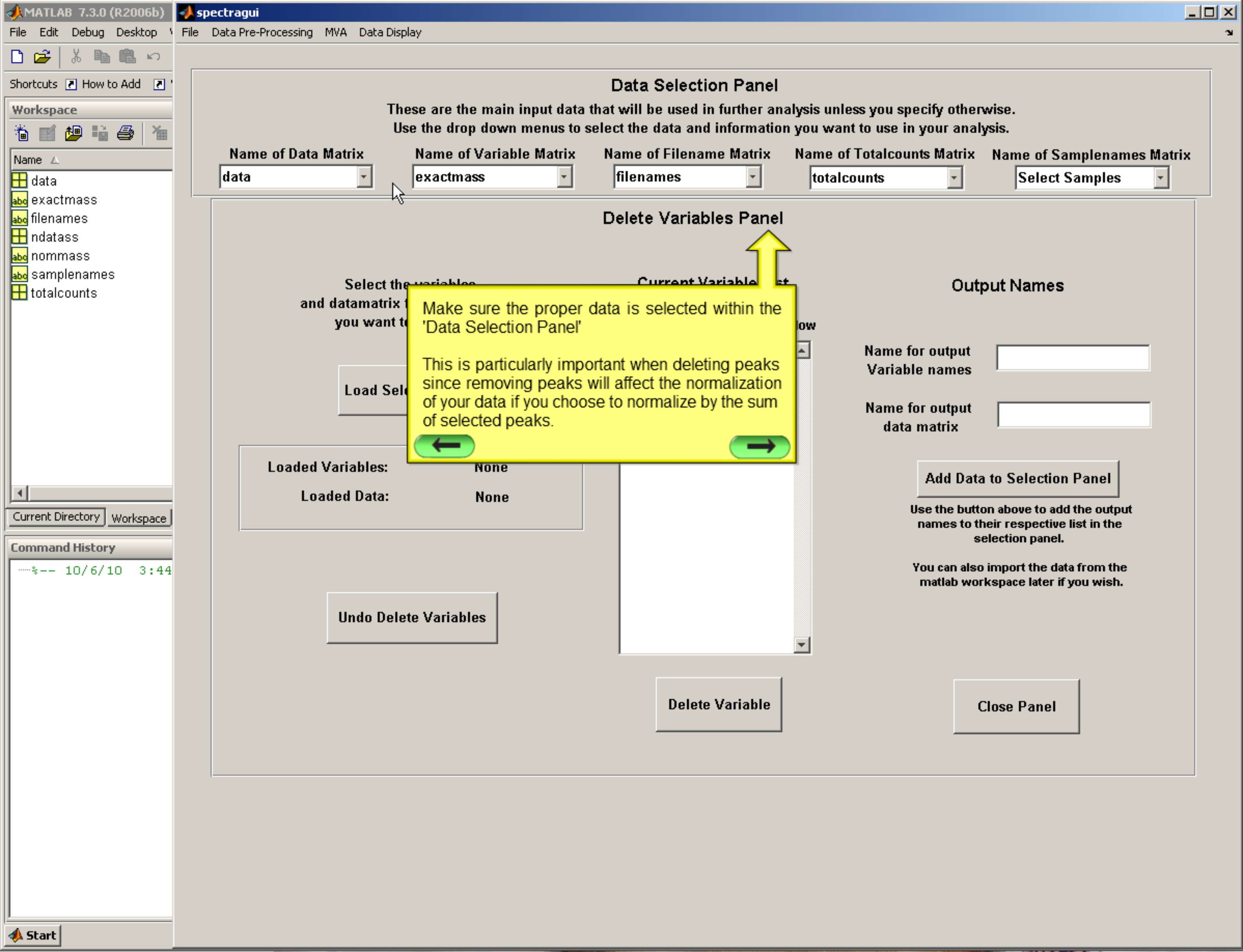


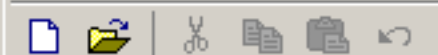
Press the 'Next' button below to start this tutorial.











Shortcuts How to Add

Workspace



Name ▲

data
exactmass
filenames
ndatass
nommass
samplenames
totalcounts

Current Directory Workspace

Command History

-----%-- 10/6/10 3:44

Data Selection Panel

These are the main input data that will be used in further analysis unless you specify otherwise.
Use the drop down menus to select the data and information you want to use in your analysis.

Name of Data Matrix	Name of Variable Matrix	Name of Filename Matrix	Name of Totalcounts Matrix	Name of Samplenames Matrix
data	exactmass	filenames	totalcounts	Select Samples

Delete Variables Panel

Select the variables
and datamatrix for the set of data
you want to work with.

Load Selected Data

Loaded Variables:

None

Loaded Data:

None

Undo Delete Variables

Current Variable List

Choose a peak to delete
and press the delete button below

Press the 'Load Selected Data' button.



Delete Variable

Output Names

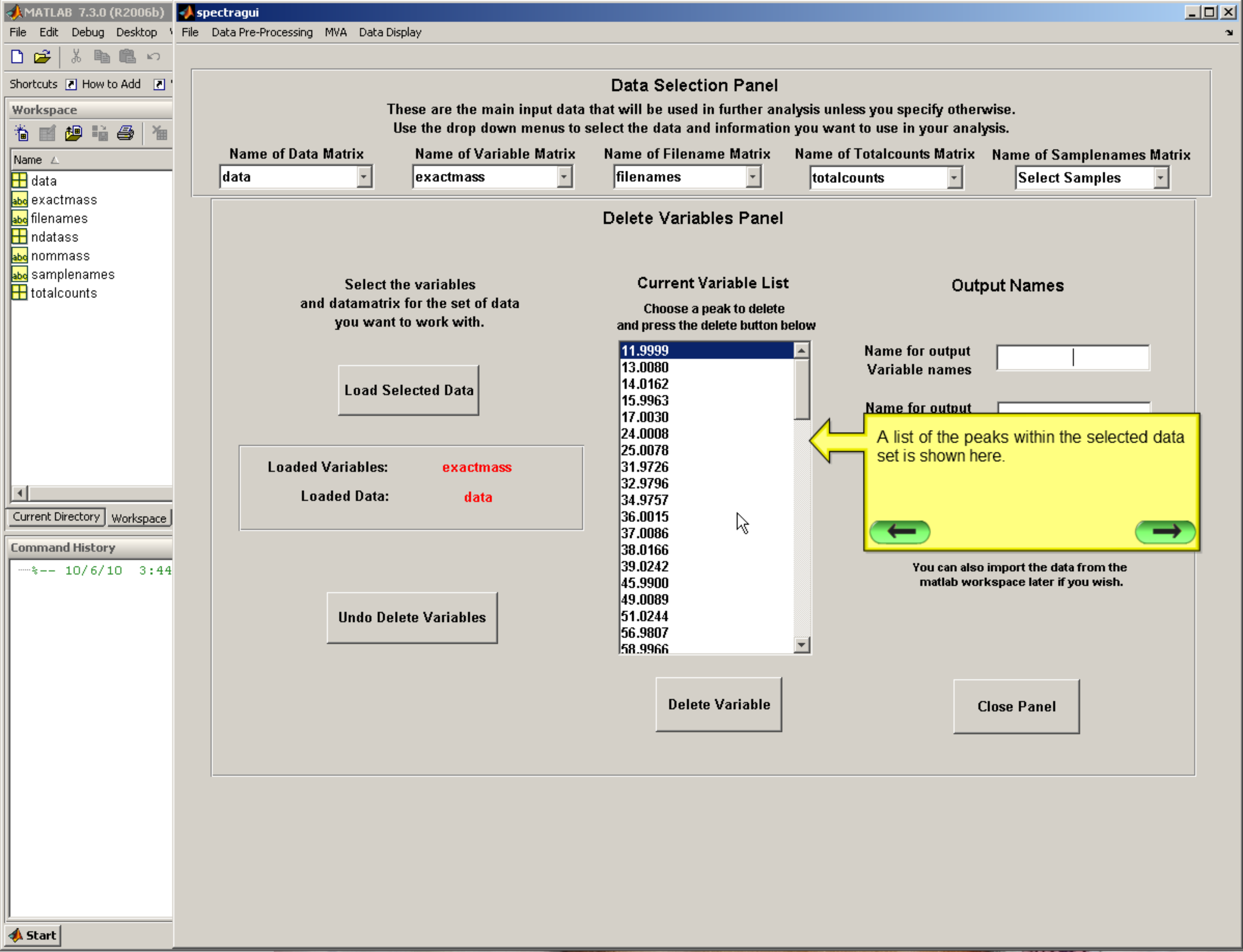
Name for output
variable namesName for output
data matrix

Add Data to Selection Panel

Use the button above to add the output
names to their respective list in the
selection panel.

You can also import the data from the
matlab workspace later if you wish.

Close Panel



Data Selection Panel

These are the main input data that will be used in further analysis unless you specify otherwise.
Use the drop down menus to select the data and information you want to use in your analysis.

Name of Data Matrix
data

Name of Variable Matrix
exactmass

Name of Filename Matrix
filenames

Name of Totalcounts Matrix
totalcounts

Name of Samplenames Matrix
Select Samples

Delete Variables Panel

Select the variables
and datamatrix for the set of data
you want to work with.

Load Selected Data

Loaded Variables: exactmass

Loaded Data: data

Undo Delete Variables

Current Variable List

Choose a peak to delete
and press the delete button below

11.9999
13.0080
14.0162
15.9963
17.0030
24.0008
25.0078
31.9726
32.9796
34.9757
36.0015
37.0086
38.0166
39.0242
45.9900
49.0089
51.0244
56.9807
58.9966

Delete Variable

Output Names

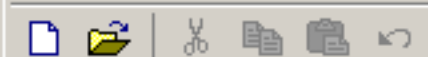
Name for output
Variable names

Name for output

A list of the peaks within the selected data
set is shown here.

You can also import the data from the
matlab workspace later if you wish.

Close Panel



Shortcuts How to Add

Workspace



Name

data
exactmass
filenames
ndatass
nommass
samplenames
totalcounts

Current Directory Workspace

Command History

---%-- 10/6/10 3:44

Data Selection Panel

These are the main input data that will be used in further analysis unless you specify otherwise.
Use the drop down menus to select the data and information you want to use in your analysis.

Name of Data Matrix

data

Name of Variable Matrix

exactmass

Name of Filename Matrix

filenames

Name of Totalcounts Matrix

totalcounts

Name of Samplenames Matrix

Select Samples

Delete Variables Panel

Select the variables
and datamatrix for the set of data
you want to work with.

Load Selected Data

Loaded Variables:

exact

Loaded Data:

data

Undo Delete Variables

Current Variable List

Choose a peak to delete
and press the delete button below

11.9999

First enter names for the new variable list
and the new data matrix.

These names must be different than the
original names.



34.9757
36.0015
37.0086
38.0166
39.0242
45.9900
49.0089
51.0244
56.9807
58.9966

Delete Variable

Output Names

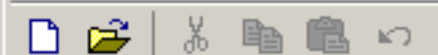
Name for output
Variable namesName for output
data matrix

Add Data to Selection Panel

Use the button above to add the output
names to their respective list in the
selection panel.

You can also import the data from the
matlab workspace later if you wish.

Close Panel



Shortcuts How to Add

Workspace



Name

data
exactmass
filenames
ndatass
nommass
samplenames
totalcounts

Current Directory Workspace

Command History

---%-- 10/6/10 3:44

Data Selection Panel

These are the main input data that will be used in further analysis unless you specify otherwise.
Use the drop down menus to select the data and information you want to use in your analysis.

Name of Data Matrix

data

Name of Variable Matrix

exactmass

Name of Filename Matrix

filenames

Name of Totalcounts Matrix

totalcounts

Name of Samplenames Matrix

Select Samples

Delete Variables Panel

Select the variables
and datamatrix for the set of data
you want to work with

Now click on a peak you want to remove
from the list.



Loaded Variables:

exactmass

Loaded Data:

data

Undo Delete Variables

Current Variable List

Choose a peak to delete
and press the delete button below

11.9999
13.0030
14.0162
15.9963
17.0030
24.0008
25.0078
31.9726
32.9796
34.9757
36.0015
37.0086
38.0166
39.0242
45.9900
49.0089
51.0244
56.9807
58.9966

Delete Variable

Output Names

Name for output
Variable names

newvariables

Name for output
data matrix

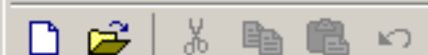
newdata

Add Data to Selection Panel

Use the button above to add the output
names to their respective list in the
selection panel.

You can also import the data from the
matlab workspace later if you wish.

Close Panel



Shortcuts How to Add

Workspace



Name

data
exactmass
filenames
ndatass
nommass
samplenames
totalcounts

Current Directory Workspace

Command History

---%-- 10/6/10 3:44

Data Selection Panel

These are the main input data that will be used in further analysis unless you specify otherwise.
Use the drop down menus to select the data and information you want to use in your analysis.

Name of Data Matrix

data

Name of Variable Matrix

exactmass

Name of Filename Matrix

filenames

Name of Totalcounts Matrix

totalcounts

Name of Samplenames Matrix

Select Samples

Delete Variables Panel

Select the variables
and datamatrix for the set of data
you want to work with.

Load Selected Data

Loaded Variables:

exactmass

Loaded Data:

data

Current Variable List

Choose a peak to delete
and press the delete button below

11.9999
13.0080
14.0162
15.9963
17.0030
24.0008
25.0078
31.9726
32.9796
34.9757
56.9807
58.9966

And press the 'Delete Variable' button.

Undo

Delete Variable

Output Names

Name for output
Variable names

newvariables

Name for output
data matrix

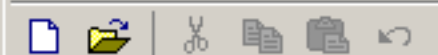
newdata

Add Data to Selection Panel

Use the button above to add the output
names to their respective list in the
selection panel.

You can also import the data from the
matlab workspace later if you wish.

Close Panel



Shortcuts How to Add

Workspace



Name ▲

data
exactmass
filenames
ndatass
newdata
newvariables
nommass
samplenames
totalcounts

Current Directory Workspace

Command History

---%-- 10/6/10 3:44

Data Selection Panel

These are the main input data that will be used in further analysis unless you specify otherwise.
Use the drop down menus to select the data and information you want to use in your analysis.

Name of Data Matrix	Name of Variable Matrix	Name of Filename Matrix	Name of Totalcounts Matrix	Name of Samplenames Matrix
data	exactmass	filenames	totalcounts	Select Samples

Delete Variables Panel

Select the variables
and datamatrix for the set of data
you want to work with

The variable is deleted.



Loaded Variables: **exactmass**
Loaded Data: **data**

Undo Delete Variables

Current Variable List

Choose a peak to delete
and press the delete button below

13.0080
14.0162
15.9963
17.0030
24.0008
25.0078
31.9726
32.9796
34.9757
36.0015
37.0086
38.0166
39.0242
45.9900
49.0089
51.0244
56.9807
58.9966
61.9895

Delete Variable

Output Names

Name for output
Variable names **newvariables**

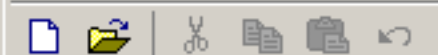
Name for output
data matrix **newdata**

Add Data to Selection Panel

Use the button above to add the output
names to their respective list in the
selection panel.

You can also import the data from the
matlab workspace later if you wish.

Close Panel



Shortcuts How to Add

Workspace



Name

data
exactmass
filenames
ndatass
newdata
newvariables
nommass
samplenames
totalcounts

Current Directory Workspace

Command History

---%-- 10/6/10 3:44

Data Selection Panel

These are the main input data that will be used in further analysis unless you specify otherwise.
Use the drop down menus to select the data and information you want to use in your analysis.

Name of Data Matrix

data

Name of Variable Matrix

exactmass

Name of Filename Matrix

filenames

Name of Totalcounts Matrix

totalcounts

Name of Samplenames Matrix

Select Samples

Delete Variables Panel

Select the variables
and datamatrix for the set of data
you want to work with.

Load Selected Data

Loaded Variables:

exactmass

Loaded Data:

data

Current Variable List

Choose a peak to delete
and press the delete button below

13.0080
14.0162
15.9963
17.0030
24.0008
25.0078
31.9726
32.9796
34.9757
36.0015
37.0086
58.9560
61.9895

Delete Variable

Output Names

Name for output
Variable names

newvariables

Name for output
data matrix

newdata

Add Data to Selection Panel

Use the button above to add the output
names to their respective list in the
selection panel.

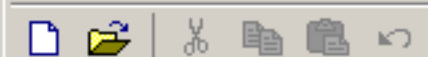
You can also import the data from the
matlab workspace later if you wish.

Close Panel

Continuing to press the 'Delete Variable' button
will continue to delete peaks from where you last
selected.

Und





Shortcuts How to Add

Workspace



Name

data
exactmass
filenames
ndatass
newdata
newvariables
nommass
samplenames
totalcounts

Current Directory Workspace

Command History

---%-- 10/6/10 3:44

Data Selection Panel

These are the main input data that will be used in further analysis unless you specify otherwise.
Use the drop down menus to select the data and information you want to use in your analysis.

Name of Data Matrix

data

Name of Variable Matrix

exactmass

Name of Filename Matrix

filenames

Name of Totalcounts Matrix

totalcounts

Name of Samplenames Matrix

Select Samples

Delete Variables Panel

Select the variables
and datamatrix for the set of data
you want to work with.

Load Selected Data

Loaded Variables: exactmass

Loaded Data: data

Current Variable List

Choose a peak to delete
and press the delete button below

25.0078
31.9726
32.9796
34.9757
36.0015
37.0086
38.0166
39.0242
45.9900
49.0089
51.0244
56.9807
58.9966
61.9895
79.9577

Output Names

Name for output
Variable names

newvariables

Name for output
data matrix

newdata

Add Data to Selection Panel

Use the button above to add the output
names to their respective list in the
selection panel.

You can also import the data from the
matlab workspace later if you wish.

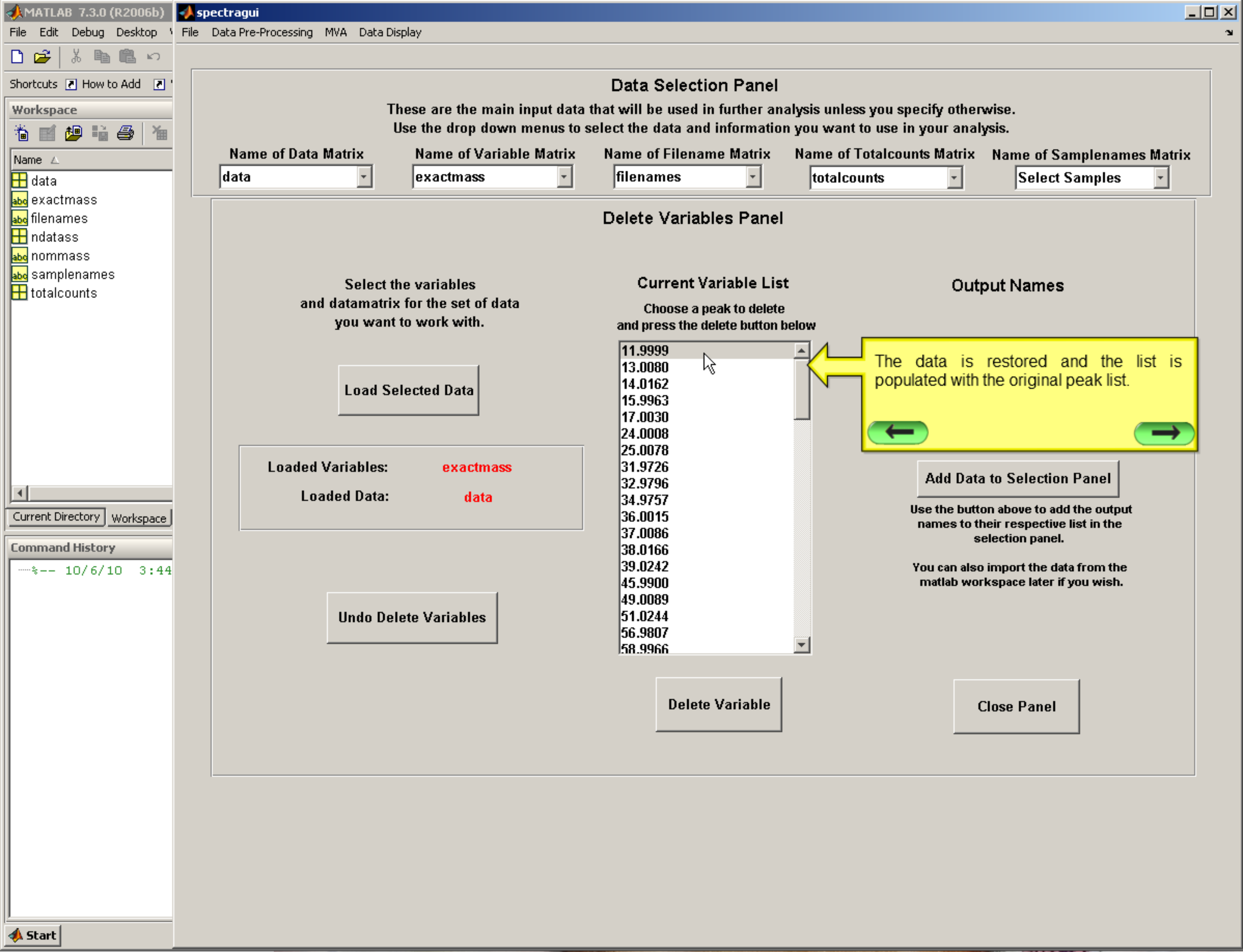
Undo Delete Variables

Use this button to undo your deletion

If you make a mistake, you can press the
'Undo Delete Variables' button to restore
the original data.



Close Panel



Workspace



Name

data
exactmass
filenames
ndatass
nommass
samplenames
totalcounts

Current Directory Workspace

Command History

---%-- 10/6/10 3:44

Data Selection Panel

These are the main input data that will be used in further analysis unless you specify otherwise.
Use the drop down menus to select the data and information you want to use in your analysis.

Name of Data Matrix

data

Name of Variable Matrix

exactmass

Name of Filename Matrix

filenames

Name of Totalcounts Matrix

totalcounts

Name of Samplenames Matrix

Select Samples

Delete Variables Panel

Select the variables
and datamatrix for the set of data
you want to work with.

Load Selected Data

Loaded Variables: exactmass

Loaded Data: data

Undo Delete Variables

Current Variable List

Choose a peak to delete
and press the delete button below

11.9999
13.0080
14.0162
15.9963
17.0030
24.0008
25.0078
31.9726
32.9796
34.9757
36.0015
37.0086
38.0166
39.0242
45.9900
49.0089
51.0244
56.9807
58.9966

Delete Variable

Output Names

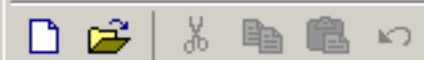
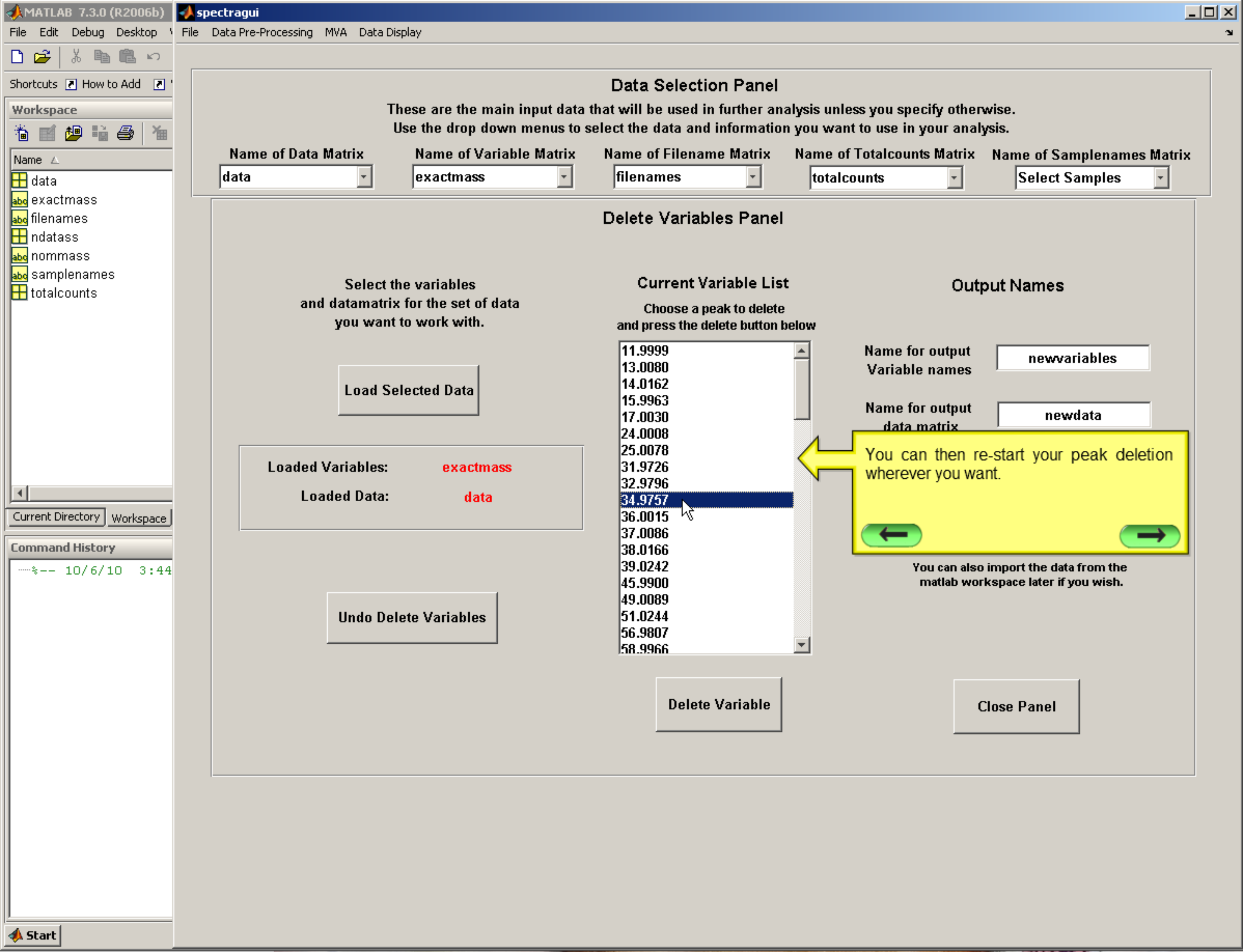
The data is restored and the list is
populated with the original peak list.

Add Data to Selection Panel

Use the button above to add the output
names to their respective list in the
selection panel.

You can also import the data from the
matlab workspace later if you wish.

Close Panel



Shortcuts How to Add

Workspace



Name

data
exactmass
filenames
ndatass
nommass
samplenames
totalcounts

Current Directory Workspace

Command History

---%-- 10/6/10 3:44

Data Selection Panel

These are the main input data that will be used in further analysis unless you specify otherwise.
Use the drop down menus to select the data and information you want to use in your analysis.

Name of Data Matrix

data

Name of Variable Matrix

exactmass

Name of Filename Matrix

filenames

Name of Totalcounts Matrix

totalcounts

Name of Samplenames Matrix

Select Samples

Delete Variables Panel

Select the variables
and datamatrix for the set of data
you want to work with.

Load Selected Data

Loaded Variables: exactmass

Loaded Data: data

Undo Delete Variables

Current Variable List

Choose a peak to delete
and press the delete button below

11.9999
13.0080
14.0162
15.9963
17.0030
24.0008
25.0078
31.9726
32.9796
34.9757
36.0015
37.0086
38.0166
39.0242
45.9900
49.0089
51.0244
56.9807
58.9966

Delete Variable

Output Names

Name for output
Variable names

newvariables

Name for output
data matrix

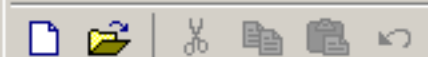
newdata

You can then re-start your peak deletion
wherever you want.



You can also import the data from the
matlab workspace later if you wish.

Close Panel



Shortcuts How to Add

Workspace



Name

data
exactmass
filenames
ndatass
newdata
newvariables
nommass
samplenames
totalcounts

Current Directory Workspace

Command History

---%-- 10/6/10 3:44

Data Selection Panel

These are the main input data that will be used in further analysis unless you specify otherwise.
Use the drop down menus to select the data and information you want to use in your analysis.

Name of Data Matrix	Name of Variable Matrix	Name of Filename Matrix	Name of Totalcounts Matrix	Name of Samplenames Matrix
data	exactmass	filenames	totalcounts	Select Samples

Delete Variables Panel

Select the variables
and datamatrix for the set of data
you want to work with.

Load Selected Data

Loaded Variables: **exactmass**
Loaded Data: **data**

Undo Delete Variables

Current Variable List

Choose a peak to delete
and press the delete button below

117.0743
145.1050
165.0586
173.1363
193.0900
196.9666
284.4682

When you are done and want to load the
new data into the spectragui, press the
'Add Data to Selection Panel' button.

285.2625
292.8829
305.2156
315.0486
333.2461

Delete Variable

Output Names

Name for output
Variable names

newvariables

Name for output
data matrix

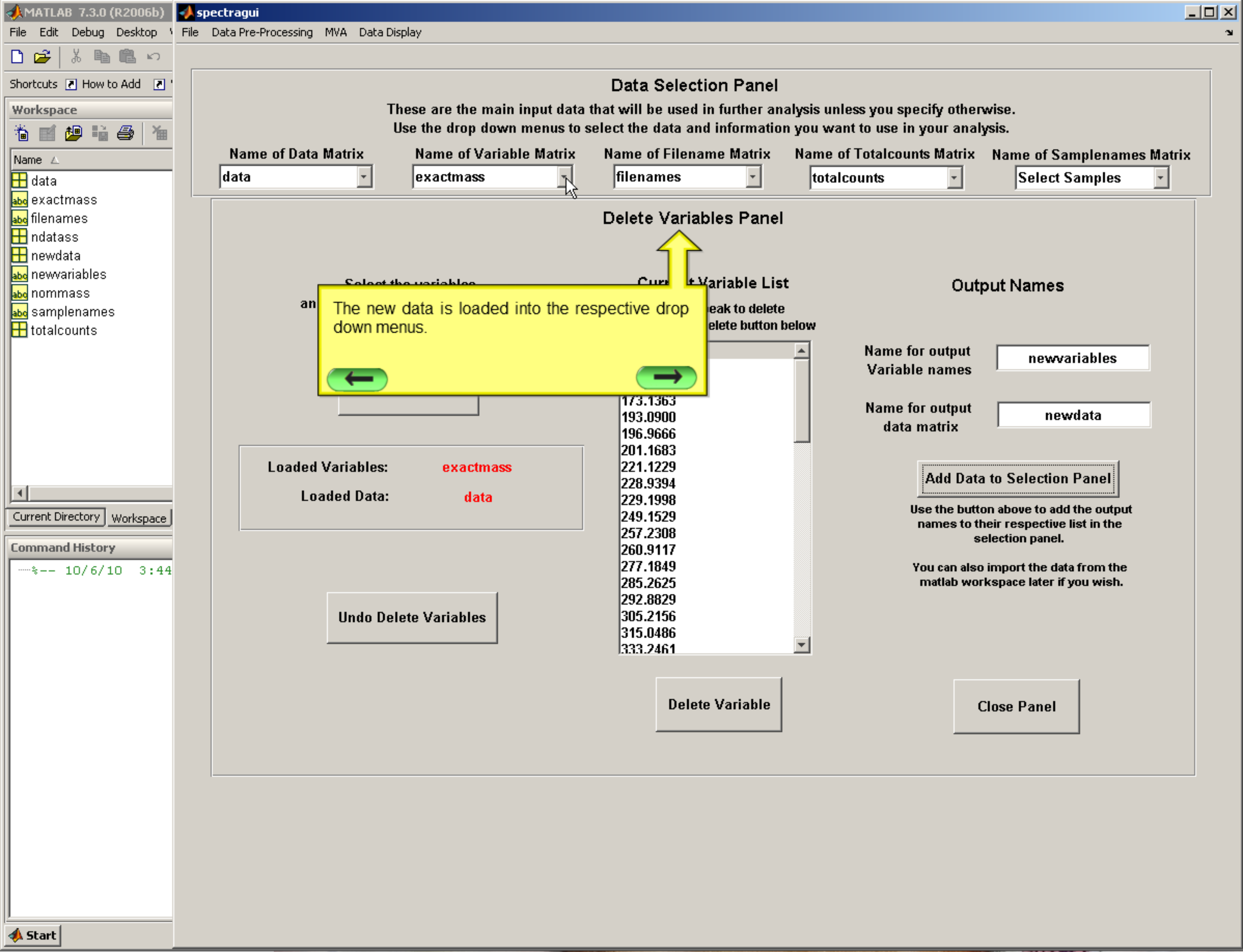
newdata

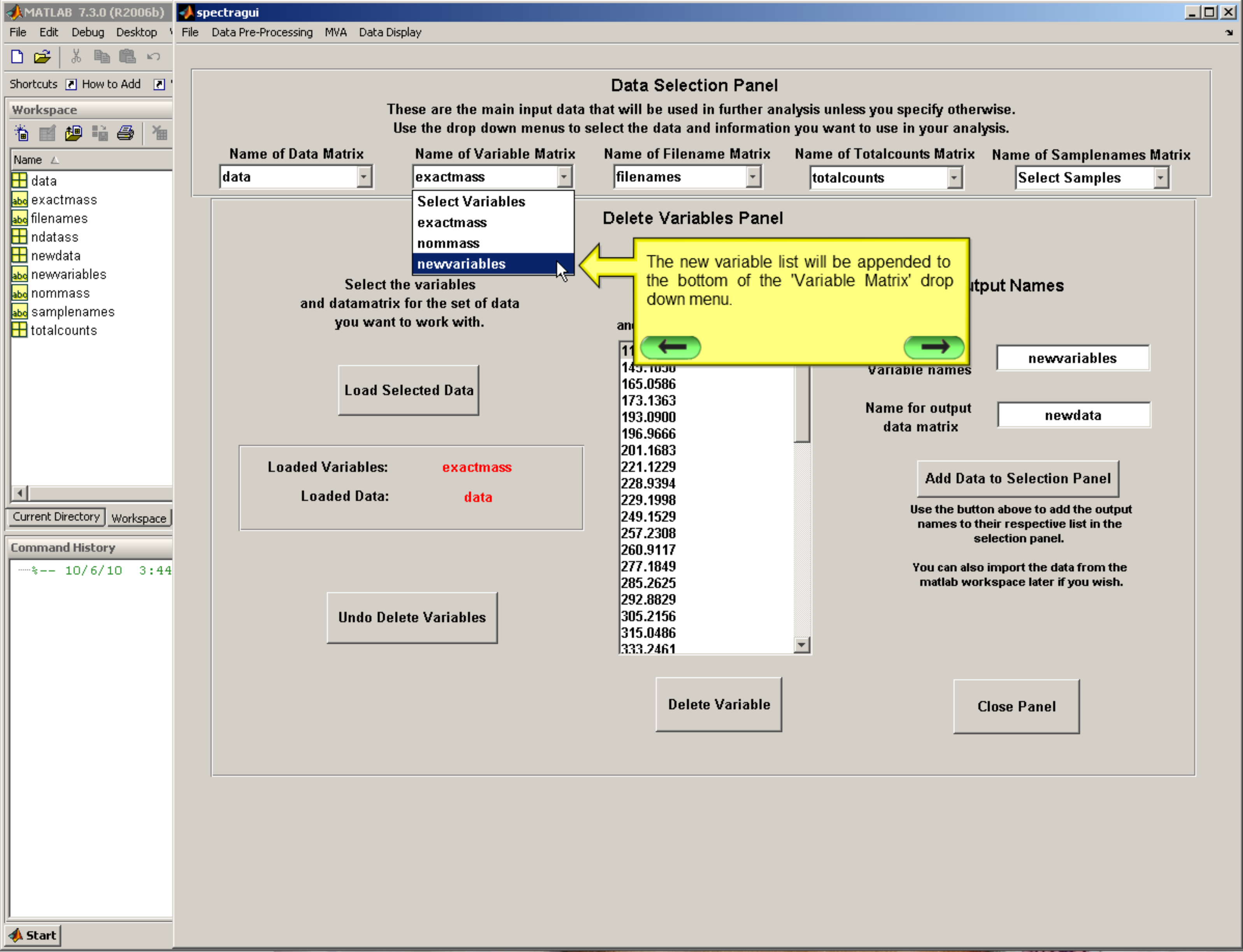
Add Data to Selection Panel

Use the button to put the new data matrices into the
names to their respective list in the
selection panel.

You can also import the data from the
matlab workspace later if you wish.

Close Panel





These are the main input data that will be used in further analysis unless you specify otherwise.

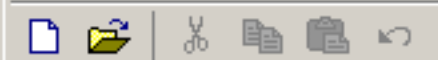
Name of Data Matrix	Name of Sample Names Matrix	Name of Totalcounts Matrix	Name of Samplenames Matrix

The screenshot shows the 'Data Matrix' window with a yellow tooltip. The tooltip contains the text: 'The new data matrix will be appended to the bottom of the 'Data Matrix' drop down menu.' An arrow points from the tooltip to the 'newdata' dropdown menu. Below the tooltip, there are three sections: 'Select the variables and datamatrix for the set of data you want to work with.', 'Current Variable List' (with a sub-instruction 'Choose a peak to delete and press the delete button below'), and 'Output Names'.

				249.1529			Use the button above to add the output names to their respective list in the	
--	--	--	--	----------	--	--	--	--

[illegible]

277.1849 You can also import the data from the



Workspace



Name

data
exactmass
filenames
ndatass
newdata
newvariables
nommass
samplenames
totalcounts

Current Directory Workspace

Command History

-----%-- 10/6/10 3:44

Data Selection Panel

These are the main input data that will be used in further analysis unless you specify otherwise.
Use the drop down menus to select the data and information you want to use in your analysis.

Name of Data Matrix

newdata

Name of Variable Matrix

newvariables

Name of Filename Matrix

filenames

Name of Totalcounts Matrix

totalcounts

Name of Samplenames Matrix

Select Samples

That's it for this tutorial.

Press the green button on the left to go back to the previous step. Press the button the right to go back to the beginning of the tutorial.

