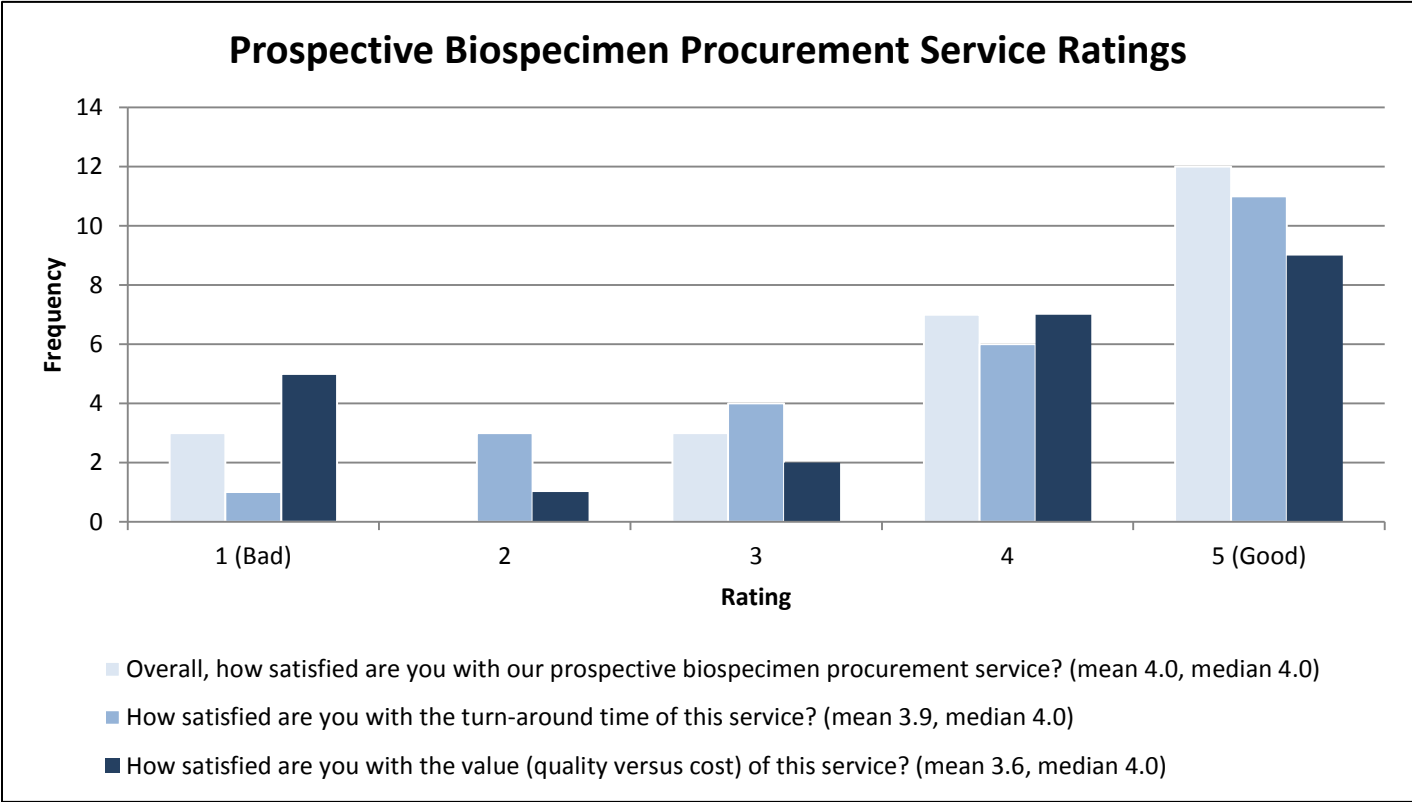


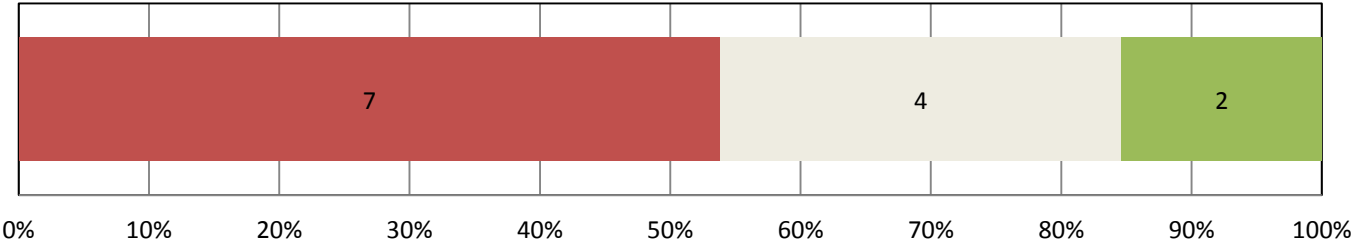
NWBioSpecimen Survey Results for 2015

This survey was sent out to 454 users of NWBioSpecimen
with 69 surveys completed (response rate of 15%).

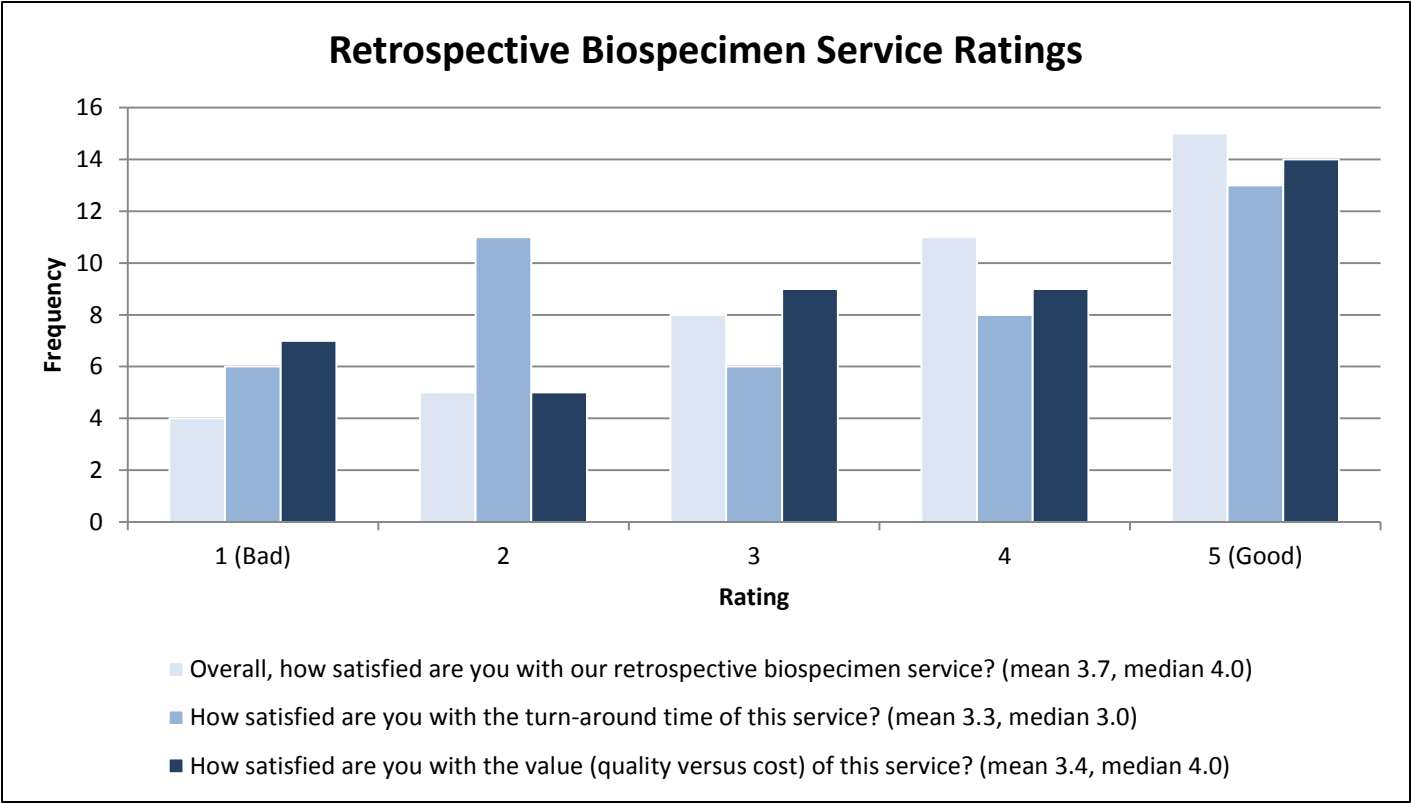
Questions 1-5 asked if users had used our prospective biospecimen procurement service. Of 25 respondents (36% of 69 surveys at least partly completed) that have used the prospective biospecimen procurement service, the following ratings were returned:



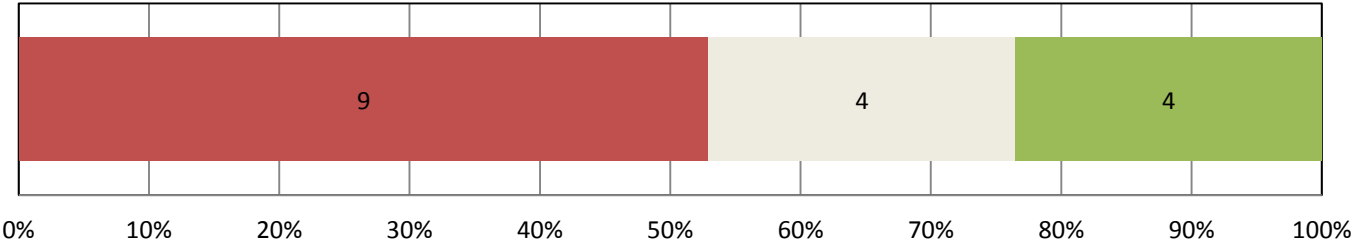
We received 13 comments which are categorized as negative (red), neutral (gray), or positive (green). Negative comments related to cost and access to specimens. Neutral comments related to access to limited numbers of specimens during this period. Positive comments related to positive experiences with NWBioSpecimen personnel and customer service.



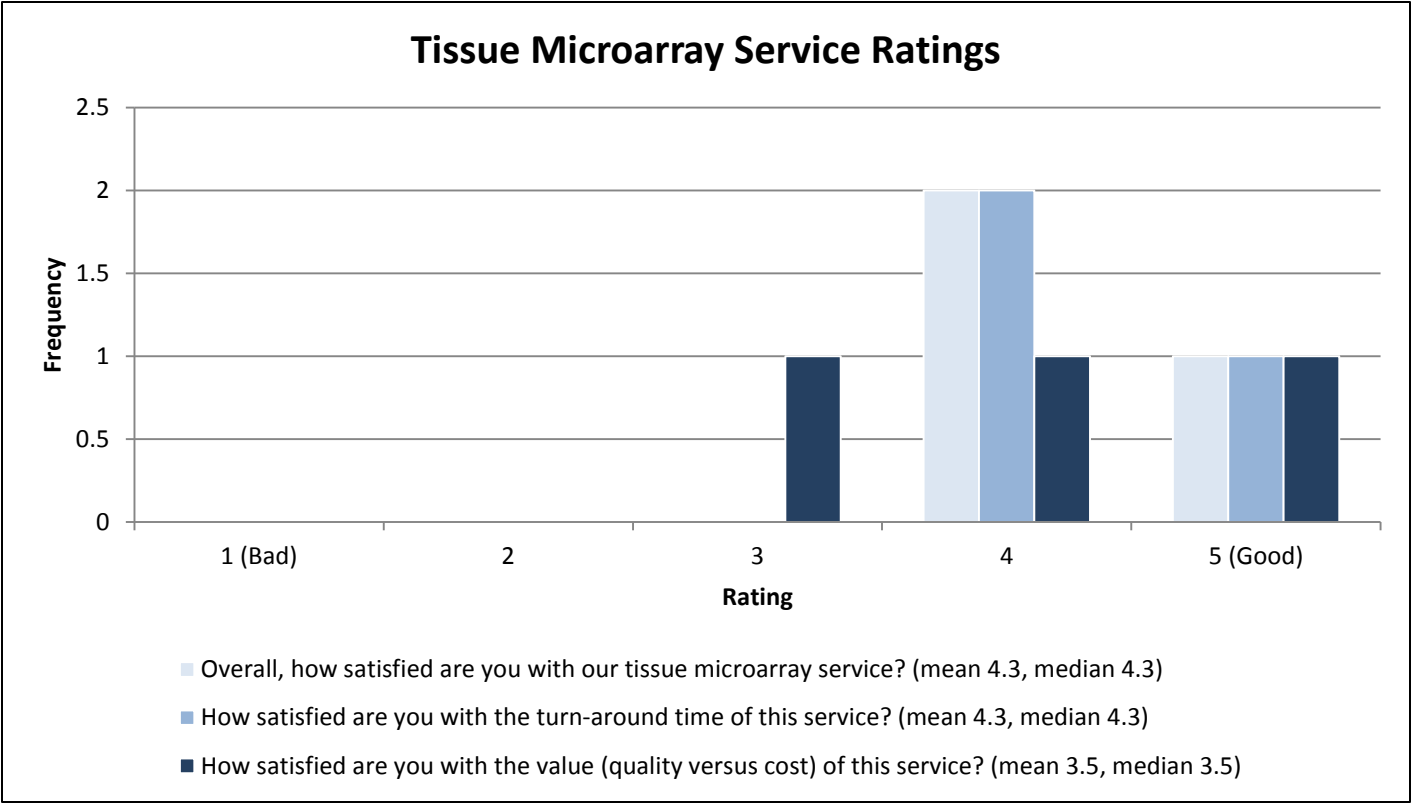
Questions 6-10 asked if users had used our retrospective biospecimen service. Of 44 respondents (66% of 67 surveys at least partly completed) that have used the retrospective biospecimen service, the following ratings were returned:



We received 17 comments which are categorized as negative (red), neutral (gray), or positive (green). Negative comments specifically related to cost, turn-around-time, administration, and pathologist authorization. Neutral comments related to requesting institutional support for reducing cost to researchers. Positive comments related to positive experiences with NWBioSpecimen personnel and customer service.

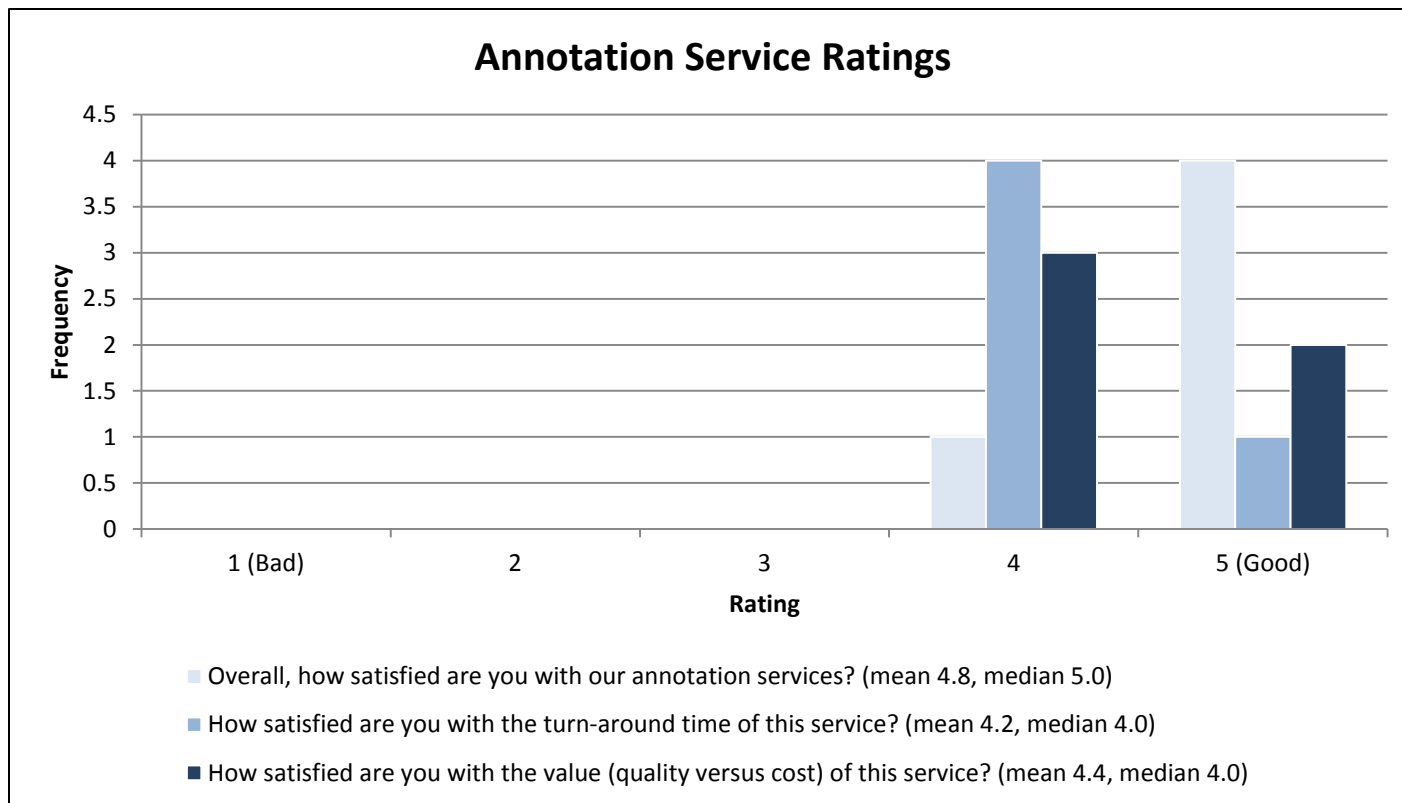


Questions 11-15 asked if users had used our tissue microarray service. Of 3 respondents (4% of 68 surveys at least partly completed) that have used the tissue microarray service, the following ratings were returned:



We received no comments for this category.

Questions 16-20 asked if users had used our data or digital annotation service. Of 5 respondents (8% of 65 surveys at least partly completed) that have used the tissue microarray service, the following ratings were returned:



We received no comments for this category.