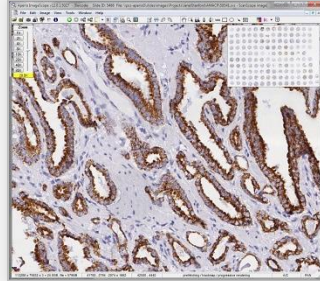


Services include brightfield histologic whole-slide scanning and image hosting, pathologist consultation, and quantitative image analysis.

### Whole Slide Scanning and Image Hosting



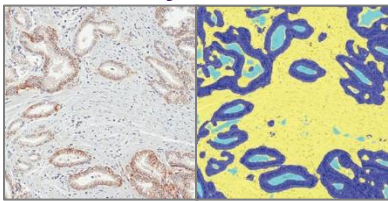
Diagnostic quality brightfield images are generated with an Aperio ScanScope CS digital slide scanner.

- Scan resolution of 0.5µm/pixel (20x objective) or 0.25µm/pixel (40x objective)
- Web access to your high quality digital slide images stored on our server with full database backup
- Access digital slides on computer and iPad for capturing publication quality snapshots or quantifying image features
- Collaborate with co-investigators by sharing scanned slides, annotations, and analysis data securely

### Quantitative Image Analysis Services

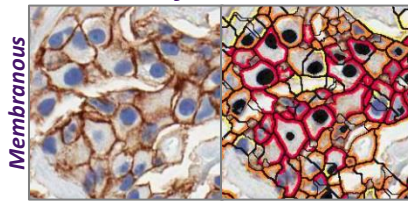
Quantify histologic features and immunohistochemical staining within tissue objects, cells, or other areas

#### Tissue Classification



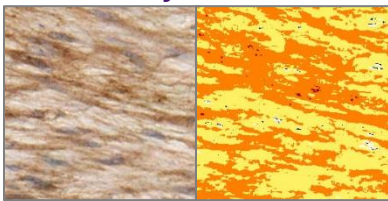
More details available in PMID 22515559.

#### Cell Quantification

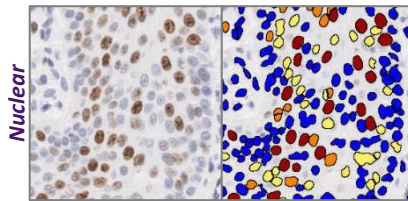


Membranous

#### Area Quantification

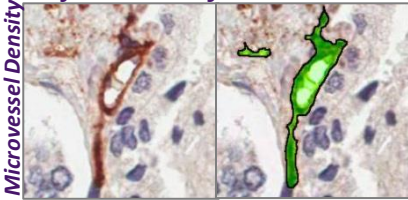


More details available in PMID 24402778.

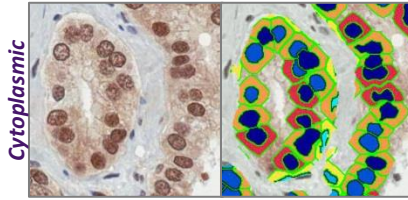


Nuclear

#### Object Quantification



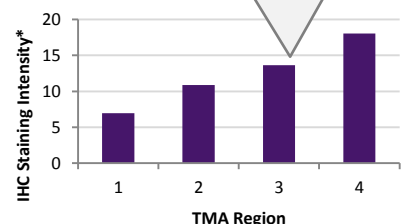
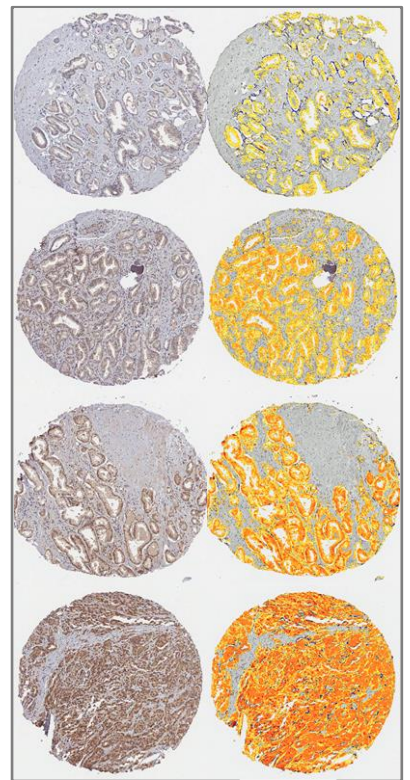
Microvessel Density  
More details available in PMID 23069258.



Cytoplasmic  
More details available in PMID 23535903.

#### Tissue Microarray Analysis

Combine tissue classification and area/cell quantification to automate TMA quantification.



\*We typically use the metric OD\*%Positive Pixels (PMID: 22515559)

- Quantification methods yield continuous variable data suitable for statistical analysis
- Final dataset and report returned to investigators
- Support for creating figures for grants/publications and presenting complex data in organized infographics

