



A Higher Level of Care

CAMPUS OVERVIEW

OFF-CAMPUS FACILITIES

KADLEC CLINICS - PRIMARY CARE

- Kennewick Primary Care**
3900 S. Zintel Way, Kennewick • 942-3125
- Pasco Primary Care**
9605 Sandifur Parkway, Pasco • 942-3170
- Richland Primary Care**
1135 Jadwin, Richland • 942-3300
- South Richland Primary Care**
560 Gage Boulevard, Suite 206 • 942-3286
- West Kennewick Primary Care**
3950 Keene Road • 942-3130
- West Richland Primary Care**
3950 Keene Road, West Richland • 942-3130

Center for Pediatrics

8108 W. Grandridge Boulevard, Kennewick • 942-3264

Senior Clinic

560 Gage Boulevard, Suite 102, Richland • 942-3135

KADLEC CLINICS - SPECIALTIES

Kadlec Clinic Gastroenterology
602 N Colorado Street, Suite D, Kennewick • 942-3180

Kadlec Clinic Nephrology
510 N. Colorado Street, Suite A, Kennewick • 942-3156

1050 W. Elm Avenue, Suite 160 • Hermiston, OR • 541-564-1810
1416 Southeast Court Avenue • Pendleton, OR • 541-564-1810

Kadlec Clinic Plastic Surgery and Dermatology
104 Columbia Point Drive, Richland • 942-3190

Kadlec Healthplex

1268 Lee Boulevard • Richland • 942-2660

Human Resources

CBC Health Science Center
891 Northgate Drive • Richland • 942-2033

Health Information Management
1270 Lee Boulevard • Richland • 942-2017

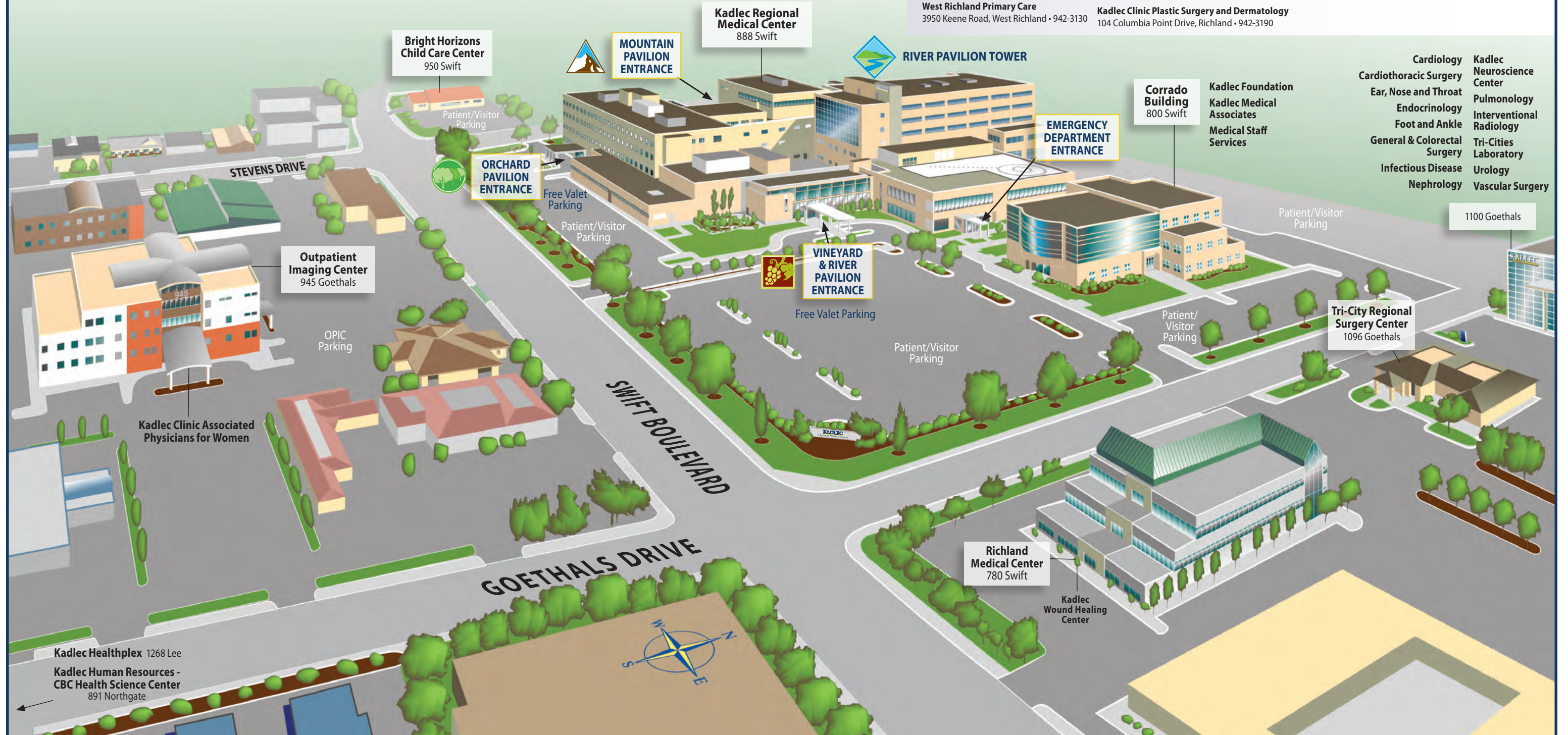
Urgent Care

4804 W. Clearwater Avenue, Kennewick • 942-2355

FREE STANDING EMERGENCY ROOM

3290 W. 19th Avenue • Kennewick

- Cardiology
- Kadlec Neuroscience Center
- Cardiothoracic Surgery
- Ear, Nose and Throat
- Pulmonology
- Endocrinology
- Interventional Radiology
- Foot and Ankle
- General & Colorectal Surgery
- Tri-Cities Laboratory
- Infectious Disease
- Urology
- Nephrology
- Vascular Surgery



KADLEC REGIONAL MEDICAL CENTER • 888 Swift Boulevard • Richland, WA 99352 • (509) 946-4611 • www.kadlec.org