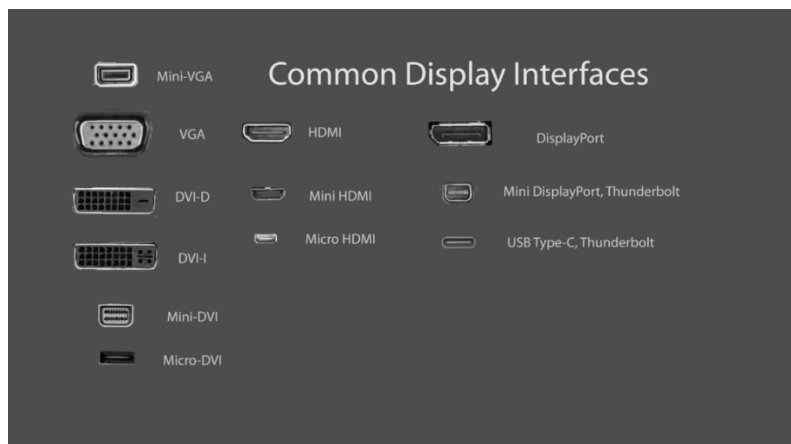


Setting up the Z27 HP Display on your Macintosh

You will need to connect your Mac to the video input of the computer. The Z27 box contains three cables and video inputs: DisplayPort, USB-C, HDMI. Depending on your Mac and it's age you may have several different connectors. On newer machines if you have a USB-C port (red in image to right) please use that. If you have an adapter or a desktop with one of the other ports, consider using displayport or if no other option use HDMI.



HP Z27 Sockets

To the right is the input panel of the display.

Color Code: HDMI (yellow), Mini Displayport (orange), DisplayPort (Green), USB-C (Red).



If you do not have a DisplayPort, USB-C, or HDMI output on your computer, you will need an adaptor.

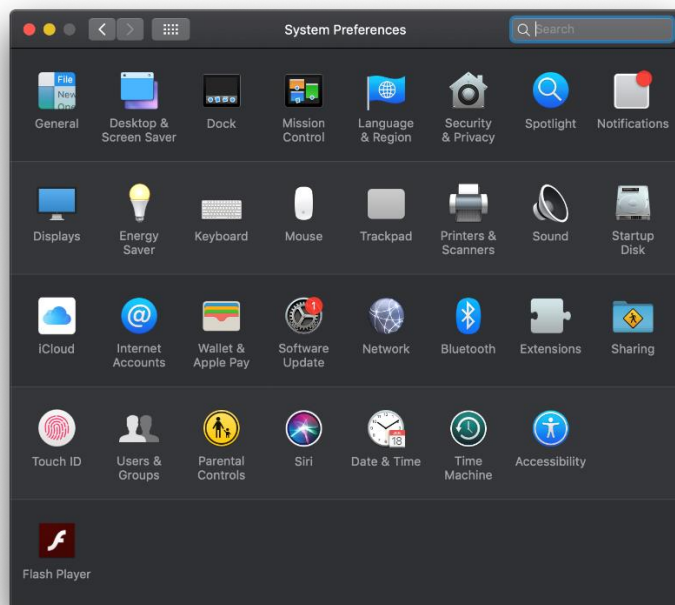
Unpack your monitor. There are no screws. The back simply snaps into the stand. Make sure that there is a good fit – the bottom part of the stand should not stick out from the back of the monitor.

Plug in the display and restart your computer.

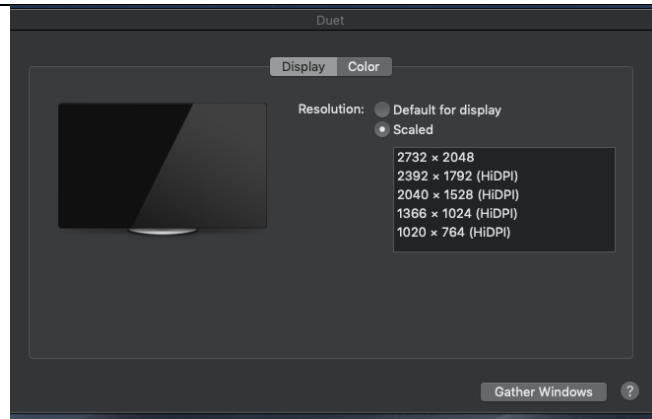
Realize that the computer will not know if the display is to the right or left of your existing display so your cursor might have to move off the left or right of the screen to get to the HP monitor.

The monitor should now be on and something is likely being displayed on the screen. To ensure that it is properly configured open System Preferences by going to menu bar clicking the apple in the top left corner of the screen and selecting "System Preferences..."

Next click on "Displays"



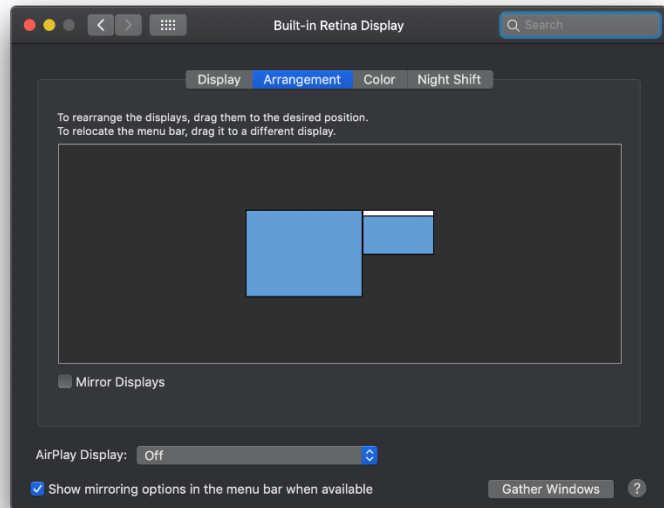
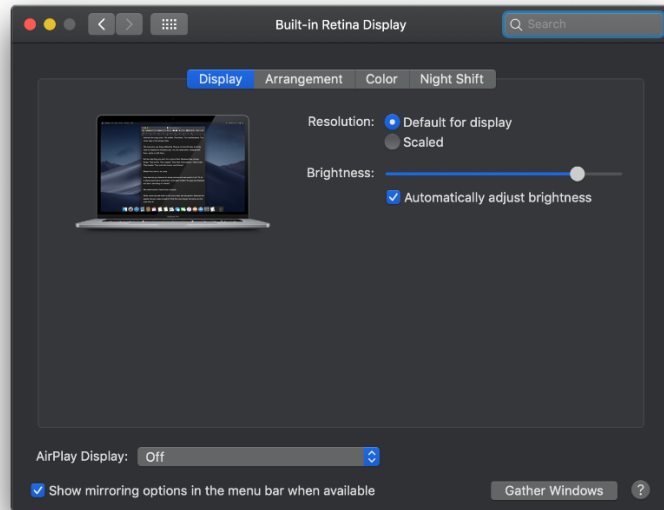
This should load windows on the main display as well as the secondary HP display. On the HP monitor there will be a window that looks similar to the one on the right. Choose the resolution at the top of the list. The options you see will be different than those displayed in the image to the right.



Arrangement:

As mentioned above the computer will not know how to arrange the content and which side of your normal screen the monitor is positioned. The window that opened on your primary screen should look similar to the one on the right. Click the "Arrangement" tab along the top of the window.

In the arrangements tab you will see two teal colored boxes representing each monitor. Make sure the "Mirror Displays" box is unchecked. If you click on one of the teal boxes representing one of the monitors you will see a red border show up on the icon and the periphery of the display that corresponds to it. Move the icons around into the physical arrangement of your monitors.



Make sure your monitor is calibrated.